



# Asus Eee PC 1000HA Hard Drive Replacement

This guide will show you how to replace the hard drive on an Asus Eee Pc 1000HA.

Written By: Ashlee Stickle



# INTRODUCTION

This guide will show you how to replace the hard drive. Please see the proper list of tools so you are prepared.



## TOOLS:

- [Phillips #00 Screwdriver](#) (1)
- [Magnetic Project Mat](#) (1)
- [iFixit Opening Tools](#) (1)



## PARTS:

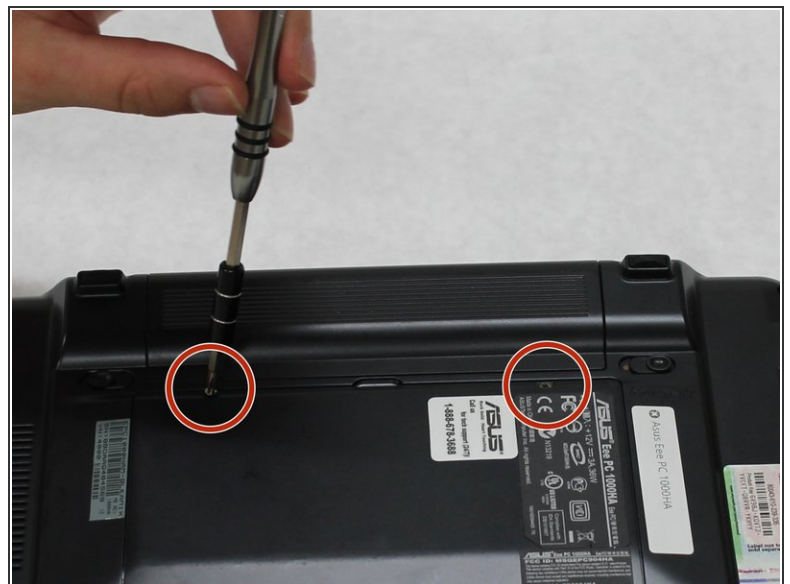
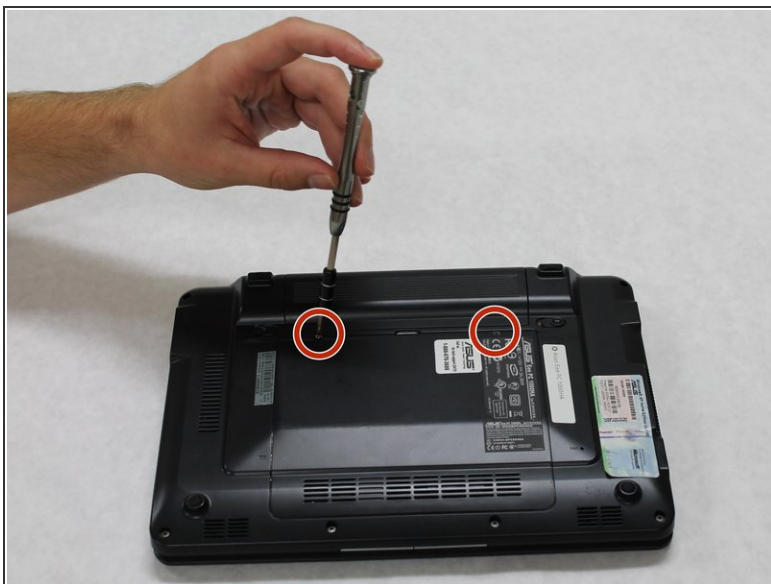
- [Replacement Hard Drive](#) (1)

## Step 1 — Hard Drive



- Remove the battery before working on your device. See this [LINK](#) for a step-by-step guide.
- Gently turn the laptop up side down so that the battery is facing away from you. The battery is outlined by the red rectangle in the picture to the left.

## Step 2



- Use a #00 Phillips Head screw driver to remove the two 1/4" screws that hold the back panel in place.

## Step 3



- Place the blue plastic 1/4" opening tool into the small indentation and gently pry the back panel off.

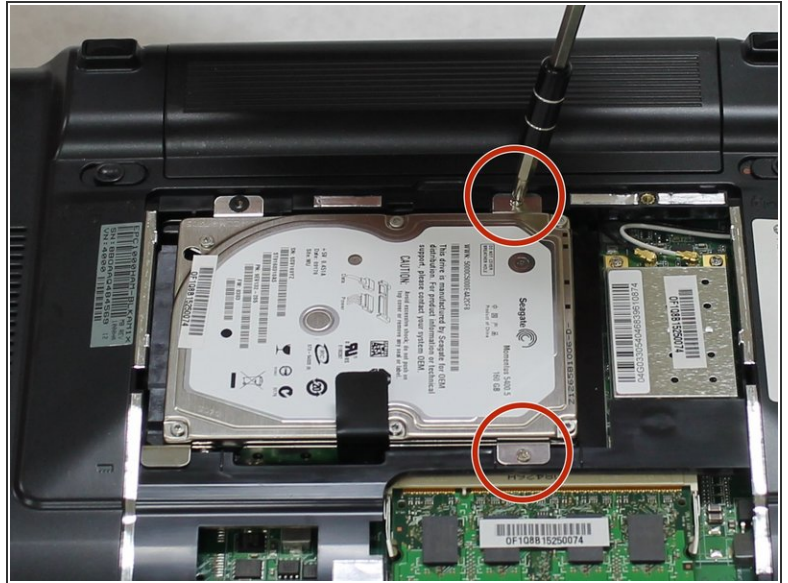
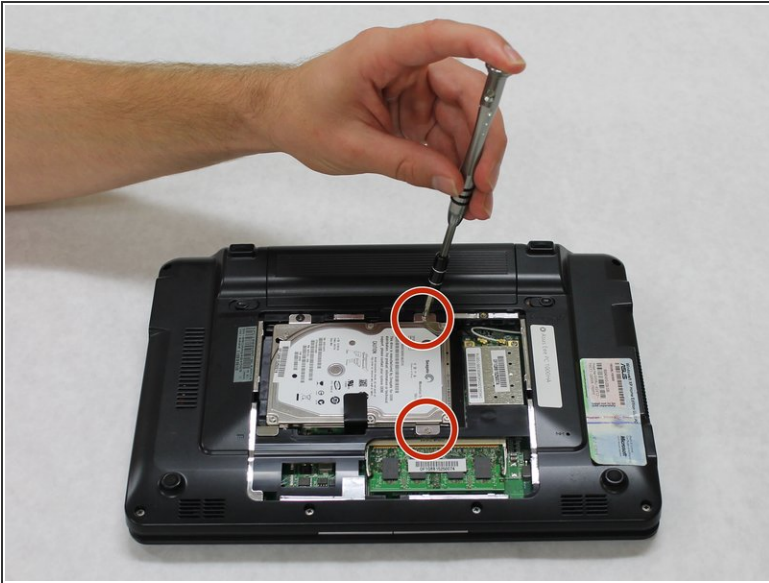
## Step 4



- Remove the back panel.
- The hard drive is shown by the orange marker.



## Step 5



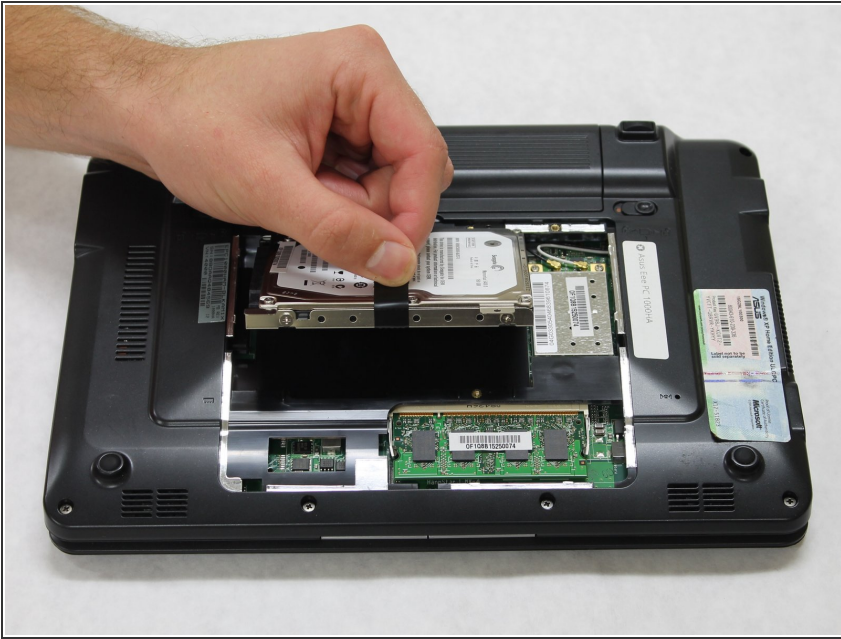
- Use the same, #00 Phillips Head screw driver to remove two 1/8" screws.

## Step 6



- To remove the hard drive, slide it to the right.

## Step 7



- Grab the black tab and lift up to remove the hard drive from the computer.

To reassemble your device, follow these instructions in reverse order.