



Toshiba Satellite C55D-B5206 CD Drive Replacement

This guide will show you how to easily remove a...

Written By: Tayyaba



INTRODUCTION

This guide will show you how to easily remove a CD drive to clean it or replace it with a new one. Do not be intimidated by the size of the CD-ROM drive, it is fairly easy to remove.

TOOLS:

Phillips #1 Screwdriver (1)

Spudger (1)

iFixit Opening Tool (1)

Step 1 — Battery



- Turn the laptop upside down so the battery faces upwards.
- Remove the two 7 mm Phillips screws that secure the battery.

Step 2



- Place both thumbs on the outside edges of the battery that meet the device.
- Push the battery out and away from the laptop.
- ① The battery should slide out with little resistance.

Step 3 — Back Casing



- Remove the thirteen 7 mm Phillips #1 screws from the bottom of the chassis.

Step 4

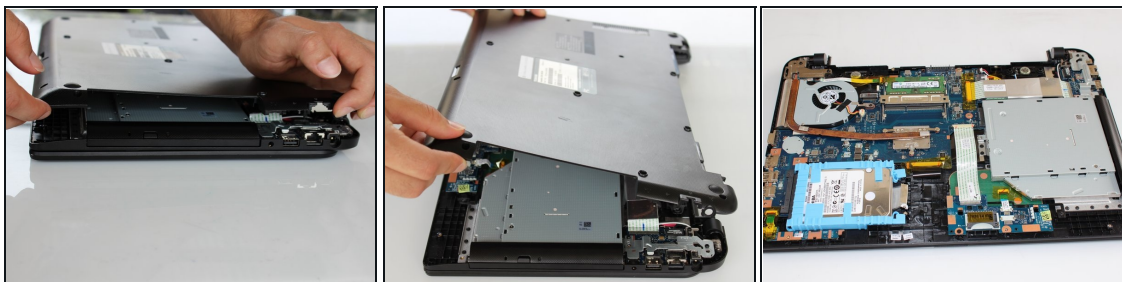


- Starting at the center, insert a spudger into the crevice between the bottom casing and the keyboard and pry upwards.
- Gently slide the spudger along the entire perimeter of the device and pry the casing loose to unhook six clips.

⚠ These images show a metal spudger, which has the potential to damage the device. Use a plastic opening tool or standard spudger instead.

- ⓘ Do not be alarmed if you feel a gentle tug or hear a click as you slide your spudger. These sounds are the clips detaching from the casing.

Step 5



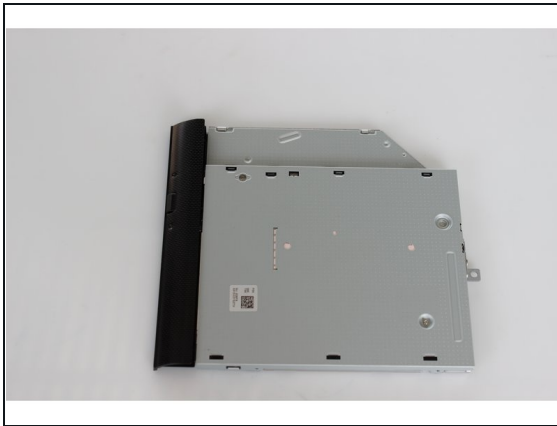
- Use your fingers to finish removing the casing from the device.

Step 6 — CD Drive



- The 7 mm Philips#1 screw has been removed in the back casing removal.
- Place thumb on the edge of the CD-ROM drive.
- Gently slide the CD-ROM drive towards your palm.

Step 7



- Lift away the CD-ROM drive.
 - You should feel the CD-ROM drive detach from the connector port.
- i** The drive should slide out and lift away with little resistance. There is no need to slide the drive roughly.

To reassemble your device, follow these instructions in reverse order.