



Nikon N80 Film Door Replacement

This is a guide for replacing the film door in your Nikon N80 Camera.

Written By: Maegan Vloria



INTRODUCTION

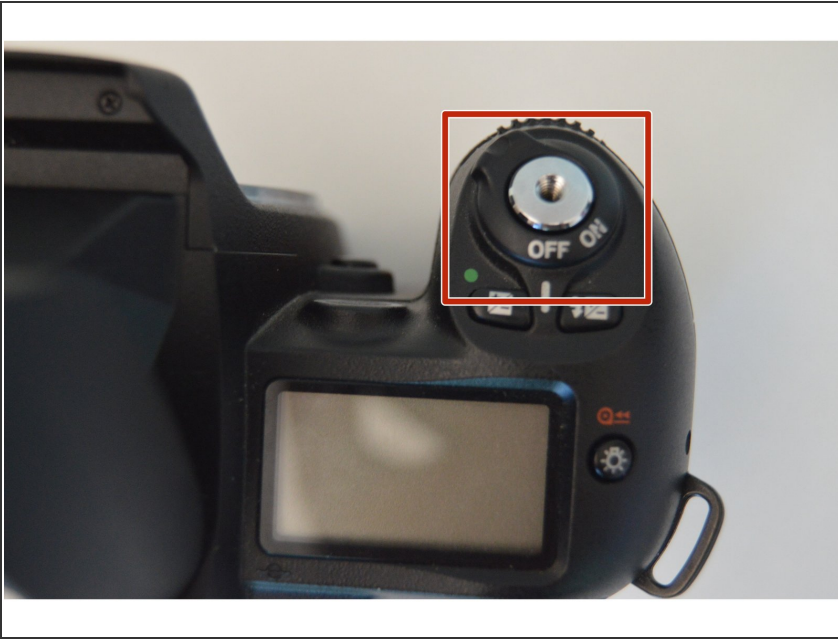
Is your film door looking ratty and not working? Don't give up on your camera and try replacing your film door! This guide will explain how to replace the film door in a Nikon N80/F80 Camera.



TOOLS:

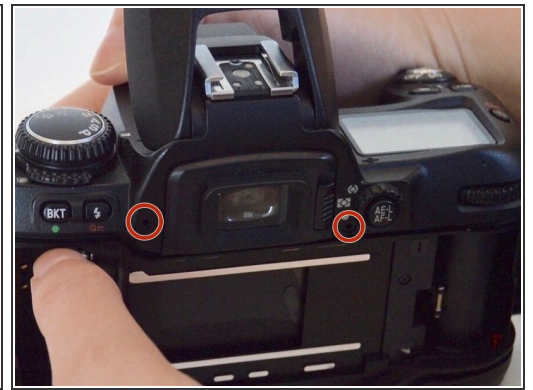
- [Phillips #00 Screwdriver](#) (1)
-

Step 1 — Film Door



- Make sure the On/Off switch is in the Off position.

Step 2



- Remove the four 4.8mm screws on the top section of the camera using a PH00 Phillips screwdriver.
- ⓘ Two of the screws are located by the viewfinder and the other two are on each side of the camera.

Step 3



- Rotate the camera so the bottom plate is accessible.
- Remove the seven 4.8mm screws on the bottom plate of the camera using a PH00 Phillips screwdriver.
- Remove the two 4.8mm screws on the bottom plate of the camera using a PH00 Phillips screwdriver.
- Remove the bottom plate.

Step 4



- Remove the five silver 4.8mm screws on the lens mount using a PH00 Phillips screwdriver.
- Extract the lens mount.

Step 5



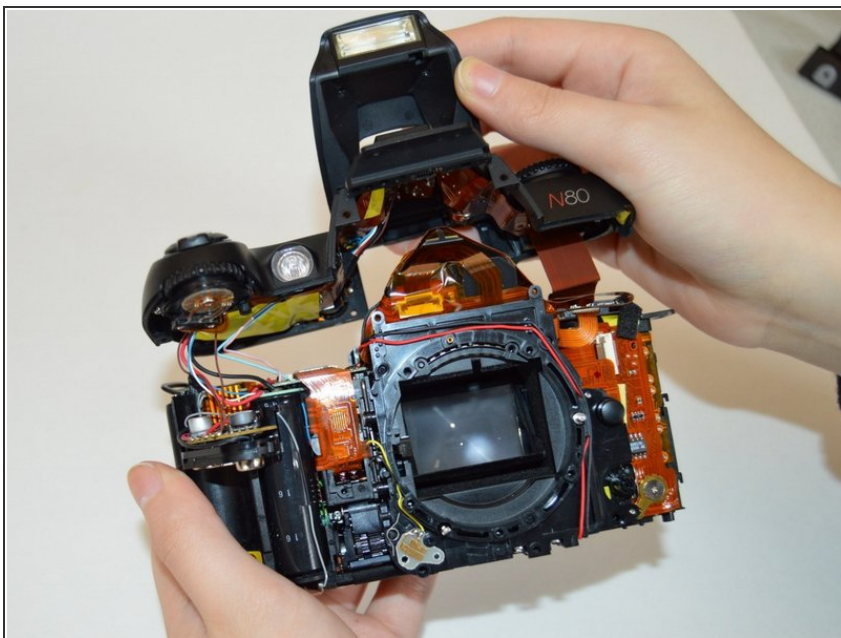
- Remove the seven 4.8mm screws on front camera plate using a PH00 Phillips screwdriver.
- ❗ One of the screws is located on the battery chamber side of the camera, two are next to the film door release lever, two are located below the "Nikon" logo, and the last two are located above the "Nikon" logo in the Speedlight compartment.

Step 6



- Remove the two 4.8mm screws in the battery compartment of the camera using a PH00 Phillips screwdriver.
- Separate the three front camera plates from the camera.

Step 7



- Gently disconnect the top section of the camera from the body.
- ⚠ Don't pull the top section off too hard or the wire and ribbon within the camera may disconnect.

Step 8



- Turn the camera over to reveal the film door.
- Remove the film door.

To reassemble your device, follow these instructions in reverse order.