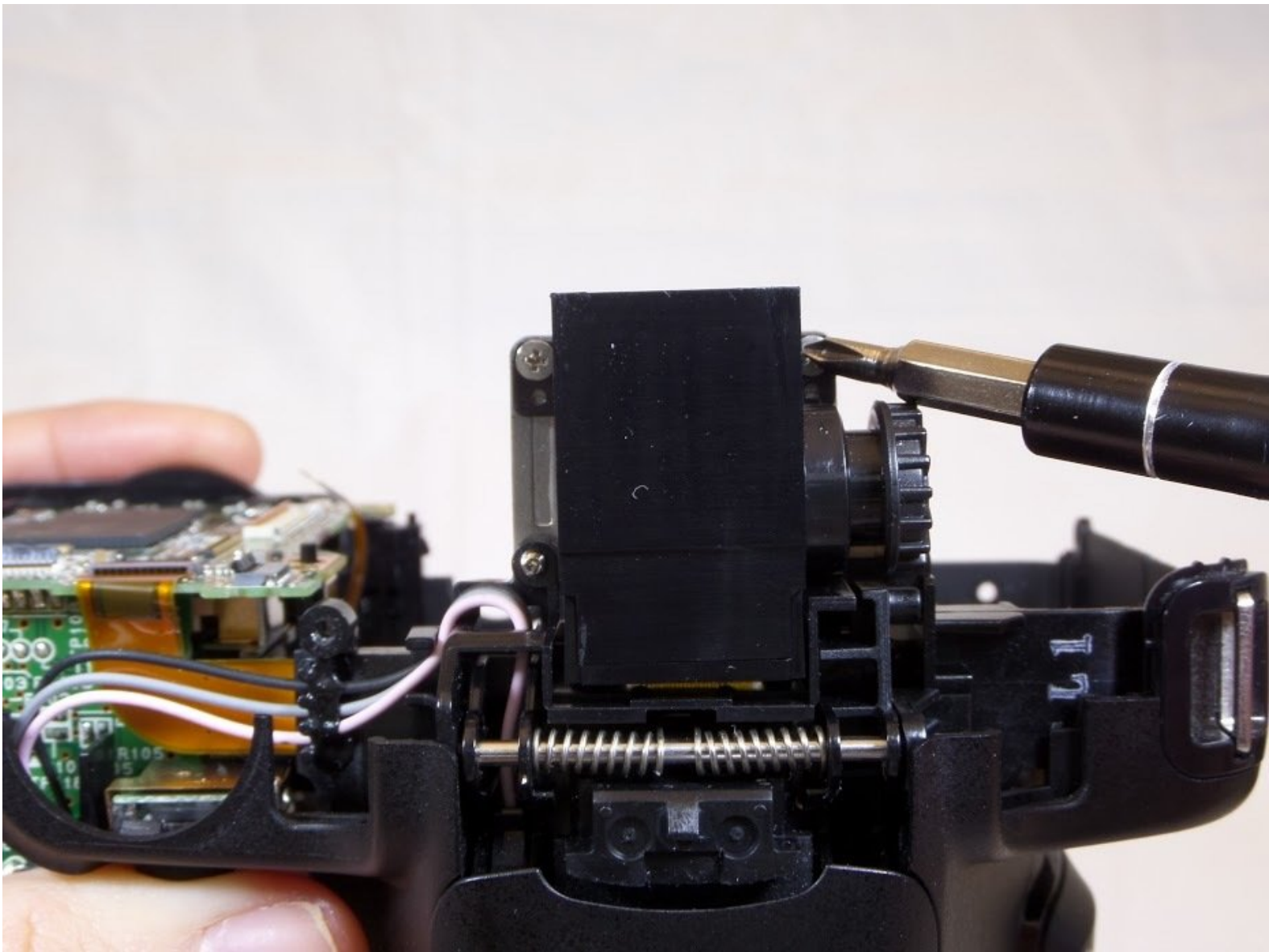




Nikon COOLPIX P600 Viewfinder Replacement

This guide will provide a detailed step-by-step guide on how to replace the viewfinder of the Nikon COOLPIX P600.

Written By: Stephen Lee



INTRODUCTION

Additional Information

[Nikon COOLPIX P600 Technical Specifications](#)

[Nikon COOLPIX P600 Service & Support](#)

TOOLS:

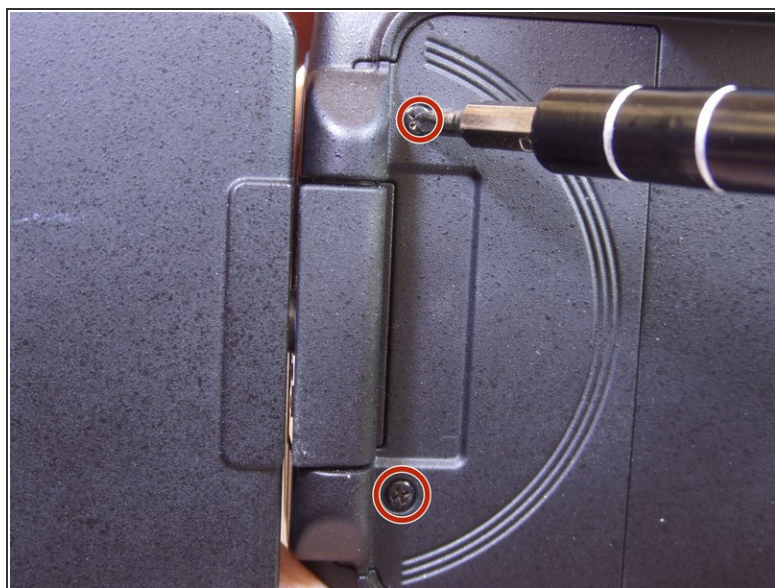
- [Essential Electronics Toolkit \(1\)](#)
-

Step 1 — Tripod Mount



- Position the back of the camera facing you and open the LCD screen to the left.

Step 2



- Use a Phillips screwdriver to unscrew the two 5.556 mm screws under the LCD screen.

Step 3



- Use a Phillips screwdriver and remove the eleven 5.556 mm screws around the outside frame of the camera.

Step 4



- Open the "HDMI" rubber flap.
- Use a Phillips screwdriver and remove the 5.556 mm screw underneath the flap.

Step 5



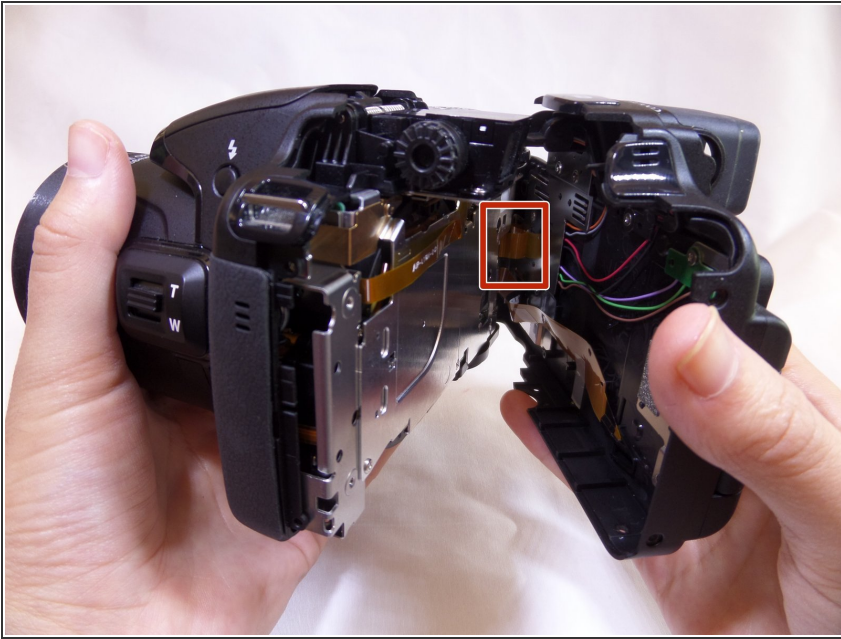
- ❗ The flash button is located on the left side of the built-in flash compartment.
- Press the flash button (as shown) to access flash.

Step 6



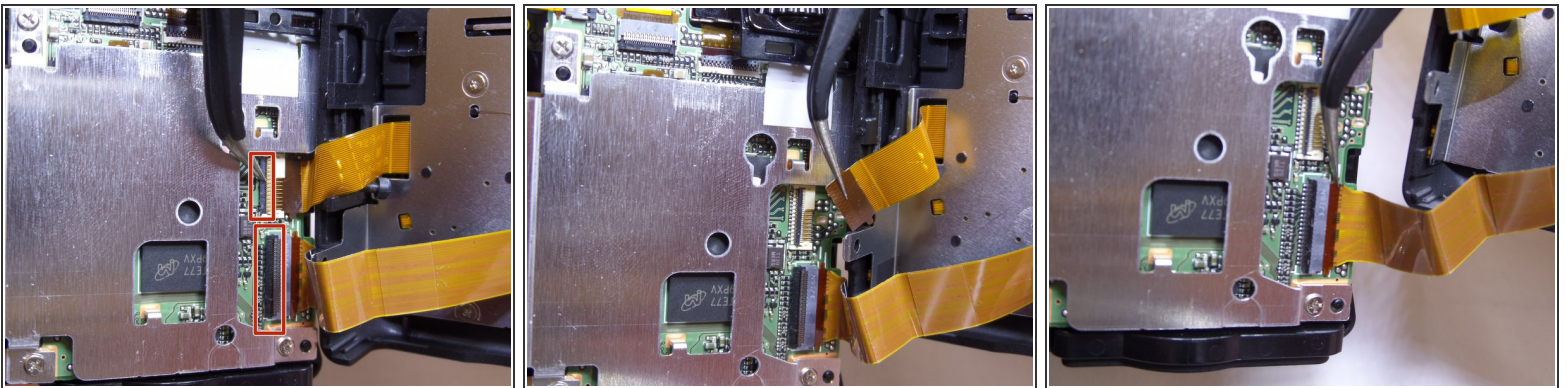
- Use a spudger to wedge underneath the flash
 - Pry (up and down) to separate.
- ⚠ It is important to choose a tool that is ESD-safe to avoid accidental damage to the device. A black nylon spudger, or plastic opening tool, should be used whenever possible.

Step 7



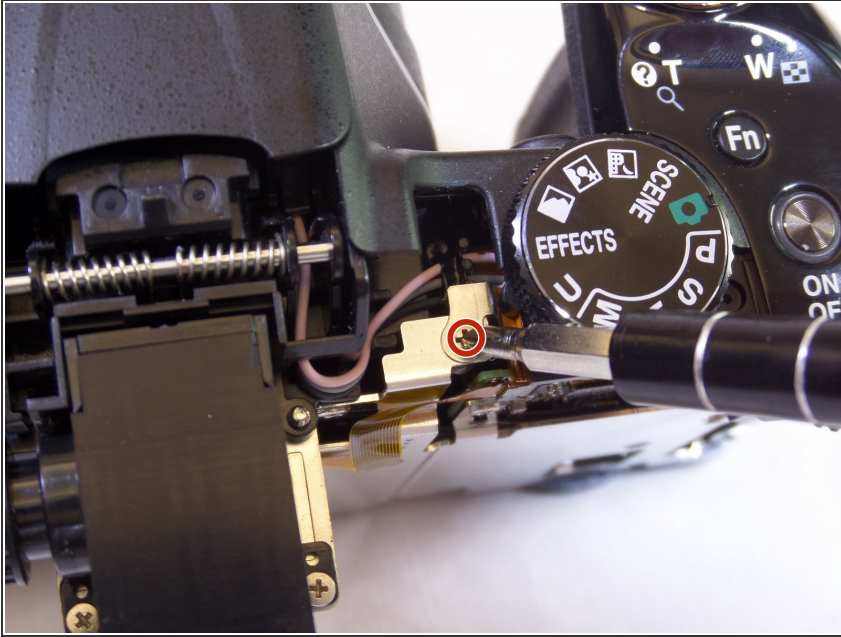
- Use your hands to gently pull the front and back of the camera apart.
- ⚠ Be careful not to damage the ribbon-wire shown in the red box.

Step 8



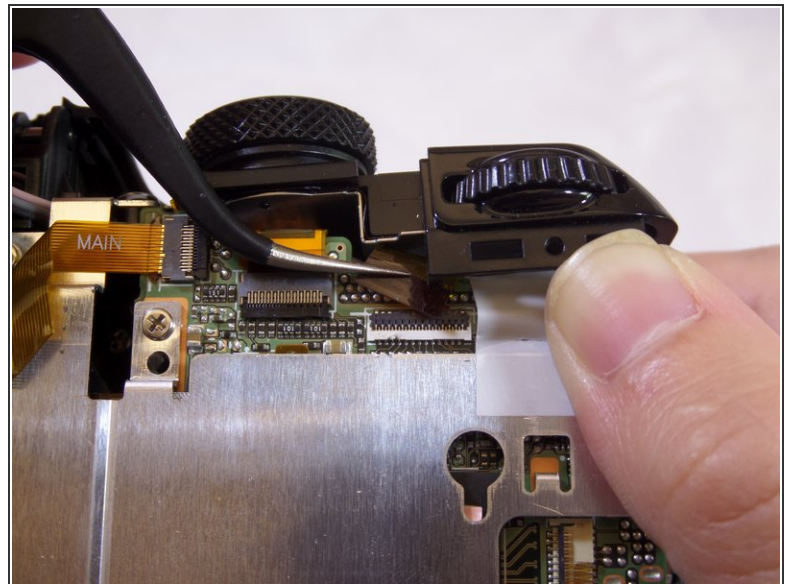
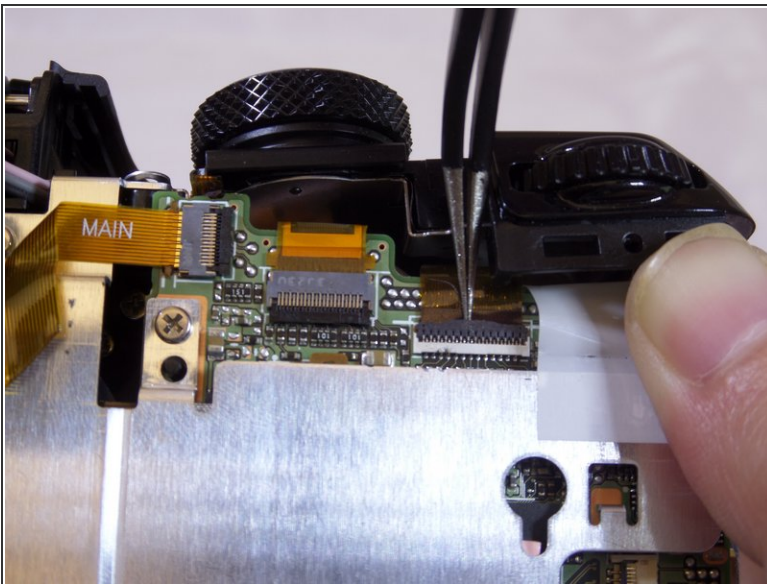
- Use needle-nose tweezers to gently lift the black/grey latch towards the ribbon-wire (the latch rotates upward to release and snaps down to lock).
- ⚠ Be careful not to break the latch. It cannot be replaced.
- Use tweezers to gently remove ribbon-wires.
- Pull the ribbon-wires towards the back-end of the camera.

Step 9



- Use a Phillips screwdriver and remove the single 6.350 mm screw, left of the mode-adjustment dial.

Step 10



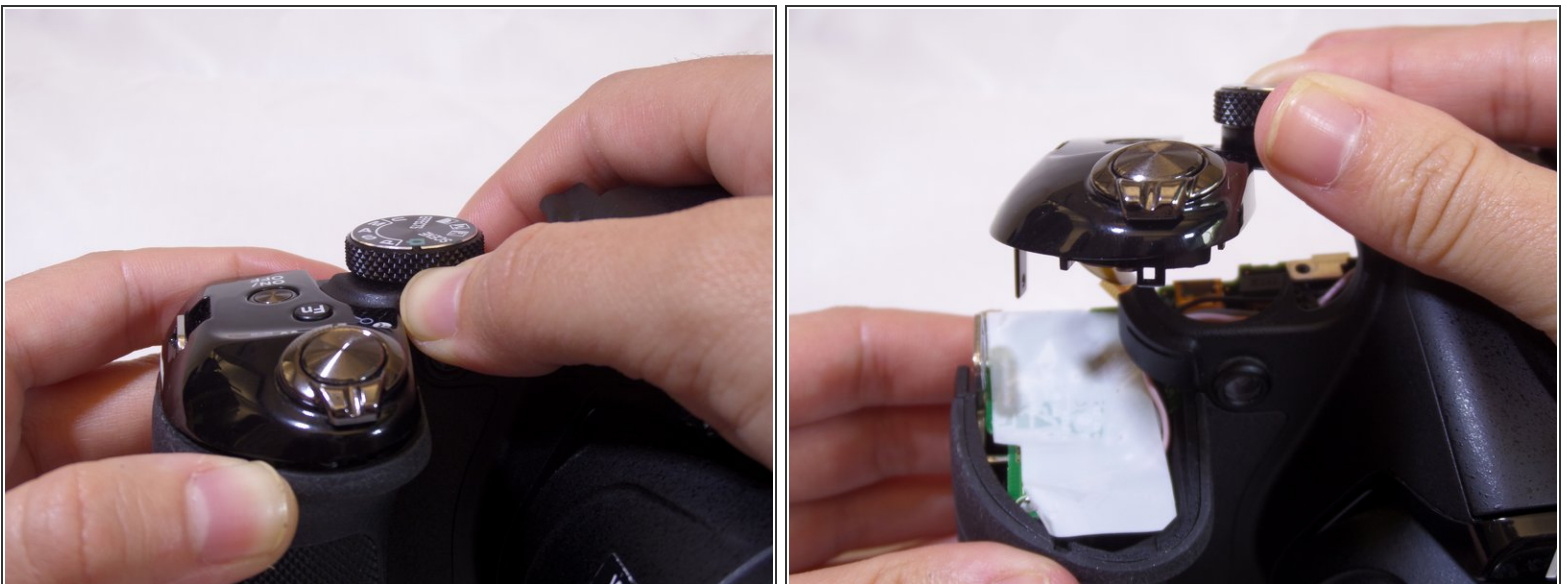
- Use needle-nose tweezers to remove the large ribbon-wire located under the screw.
 - Gently wiggle the ribbon out in an upward motion.
- ⓘ For easier access, you can push the black surface of the camera where the buttons and dials are located. Do not push too hard as this may break the plastic.

Step 11



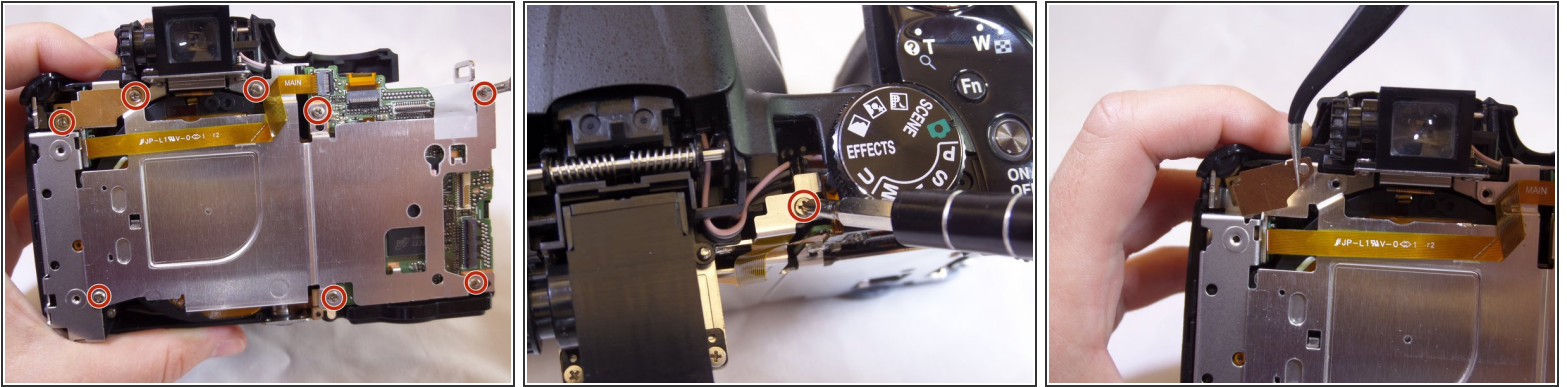
- Insert a plastic opening tool under the shutter button.
- Gently pry (back and forth) between the rubber grip and camera casing.

Step 12



- Place hands around the camera. Hold onto the mode dial and grip under the shutter button.
- Gently push right thumb away and pull in left index finger to separate the camera halves.

Step 13



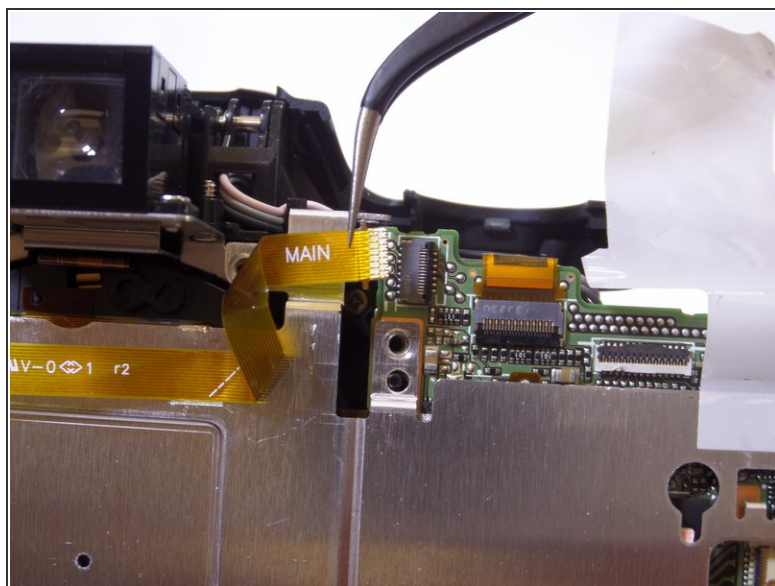
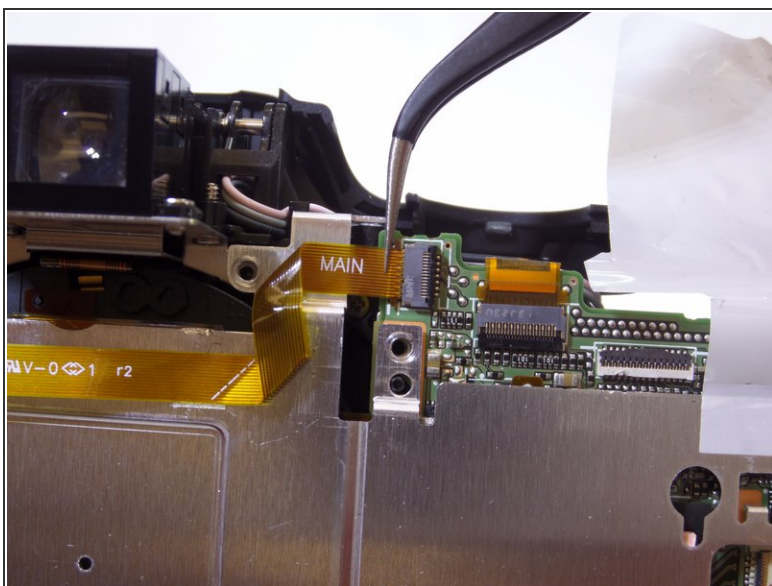
- Use a Phillips screwdriver to remove the nine 3.175 mm screws on the inside of the camera.
- Use tweezers to remove the golden bracket.

Step 14



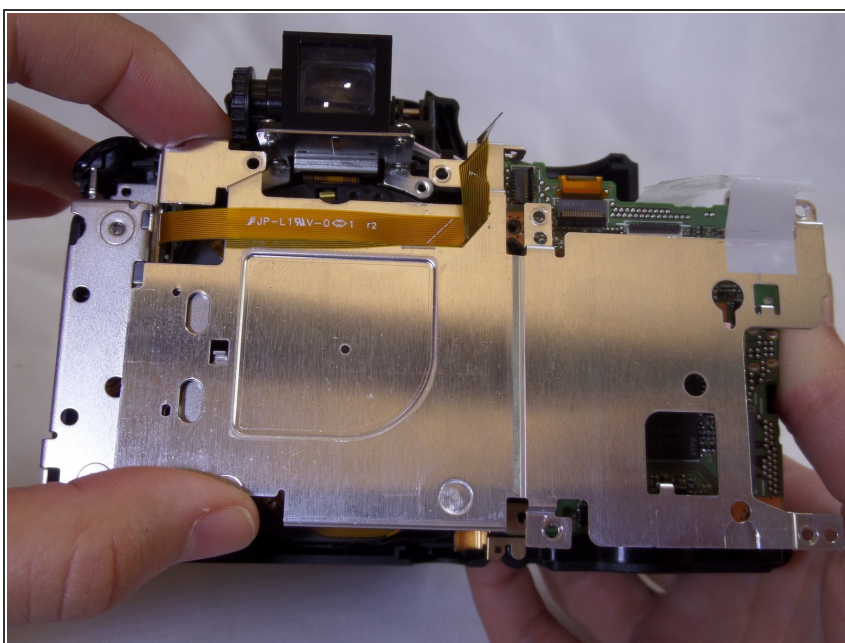
- Use tweezers to remove the white film under the shutter-release button.
- i* This white film is a cover for the electrical components. The camera will not be affected if it rips or comes off completely.
- ⚠** Be careful: three high-discharge capacitor leads are located under this film, and can result in electric shock if touched.

Step 15



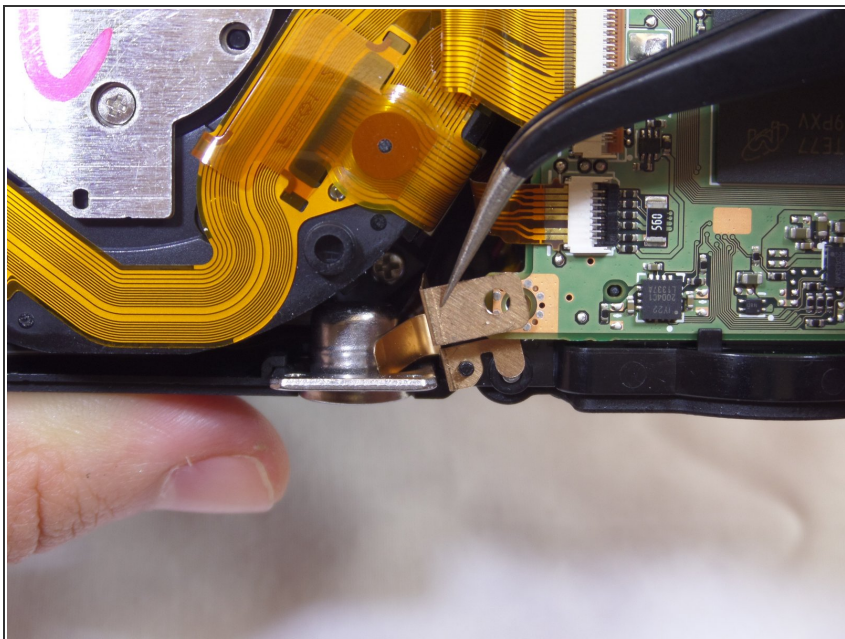
- Use tweezers to remove the yellow ribbon-wire.
- Gently wiggle it to the left and then out of its port.

Step 16



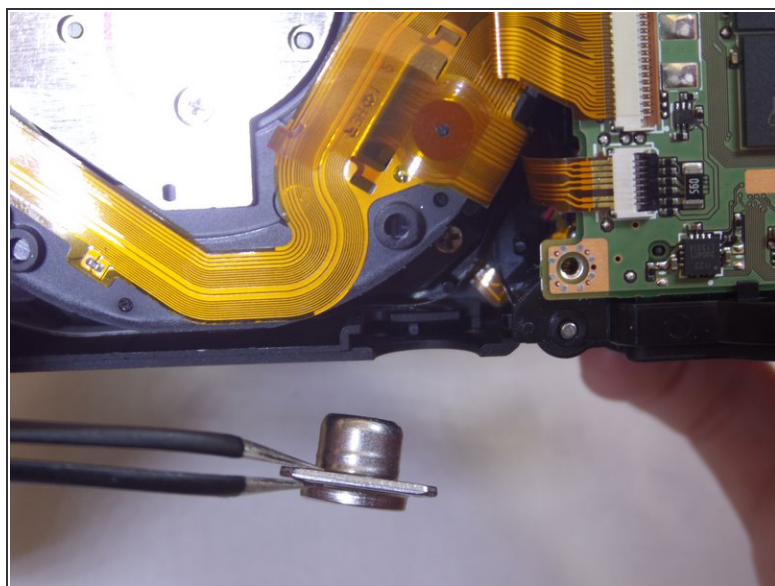
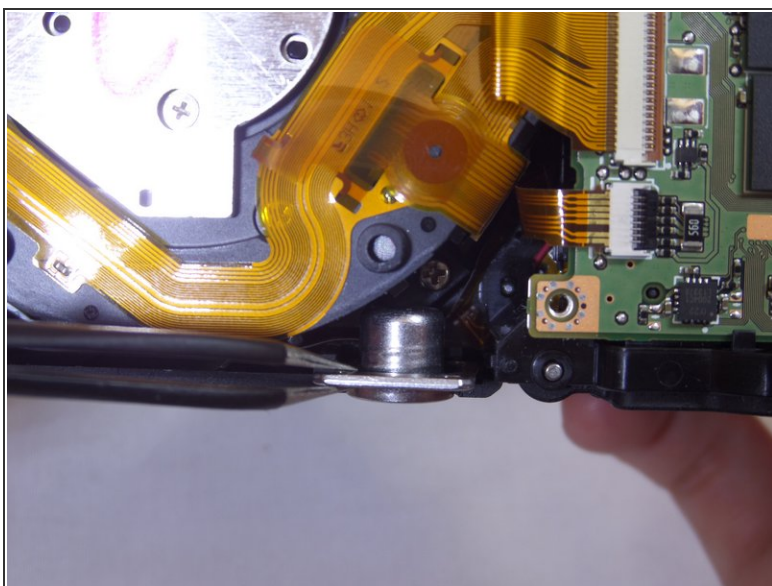
- Use hands to remove the metal cover.
- Pull the cover up.

Step 17



- Use tweezers to remove the golden bracket.

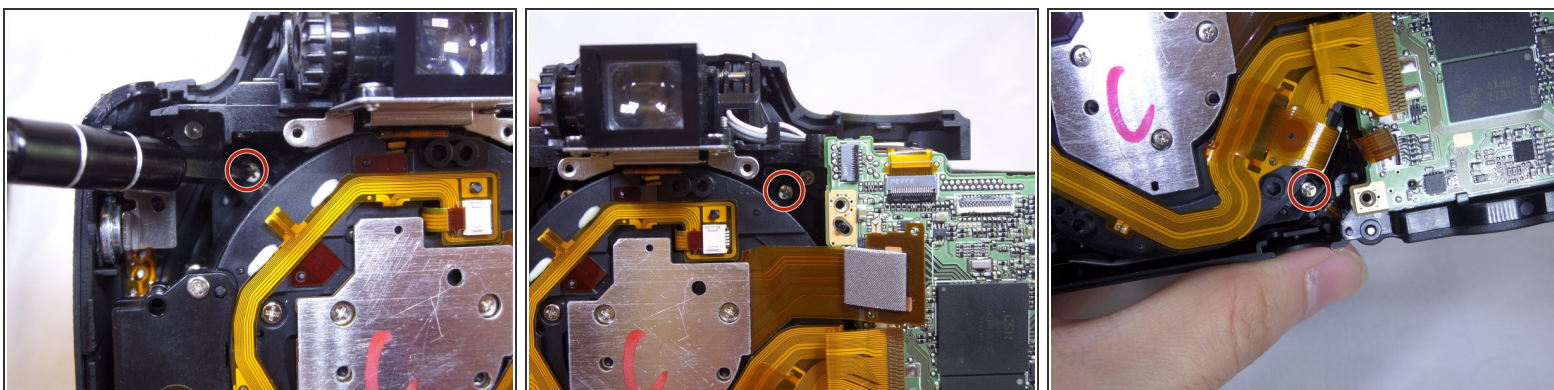
Step 18



i The tripod connector is located at the bottom of the camera.

- Use tweezers to remove the tripod connector.

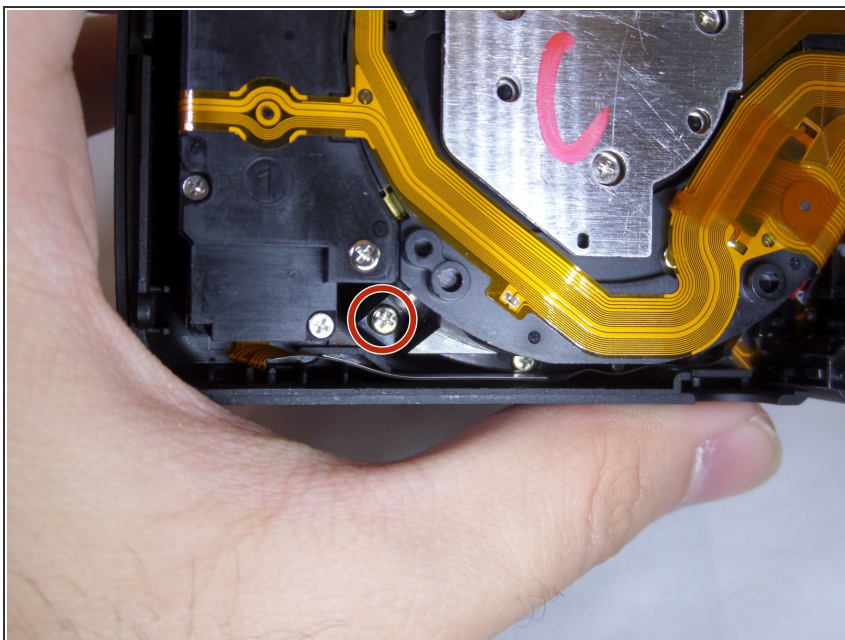
Step 19 — Lens



- Unscrew the three 3.175mm screws.

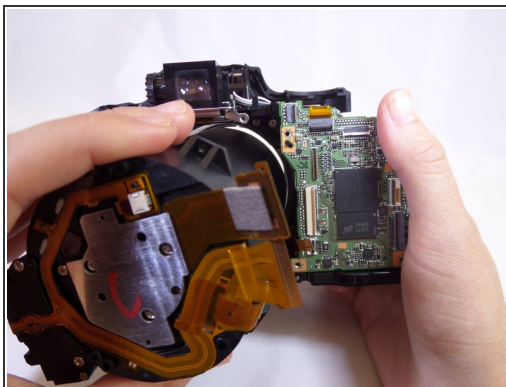
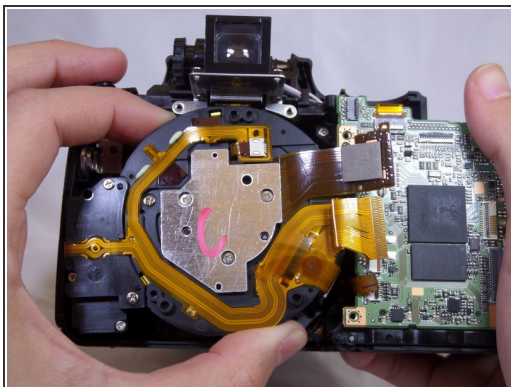
⚠ Use caution to not to lose the screws in the cavities of the camera.

Step 20



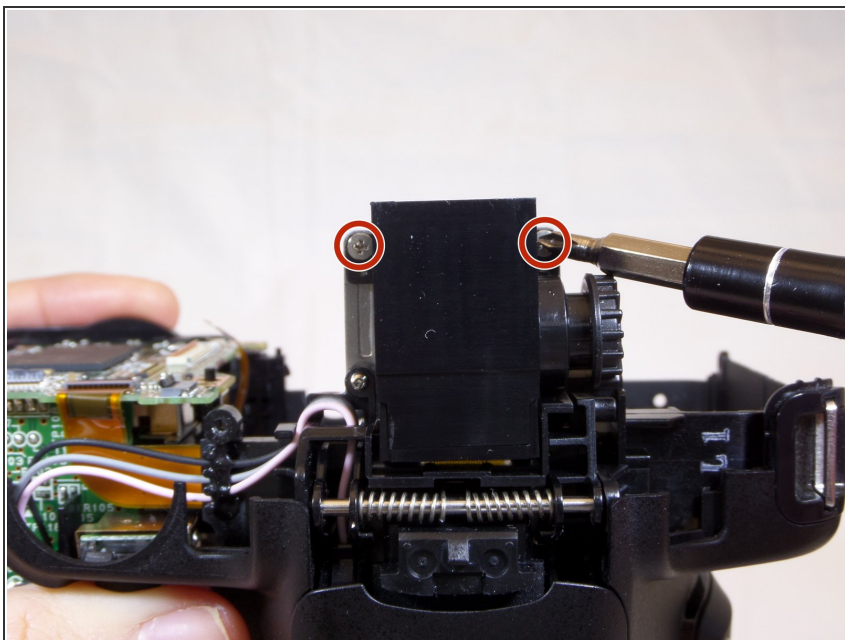
- Continue removing screws, keeping an awareness of the cavity right below the screw. It would be difficult to extract screw if lost in this cavity.

Step 21



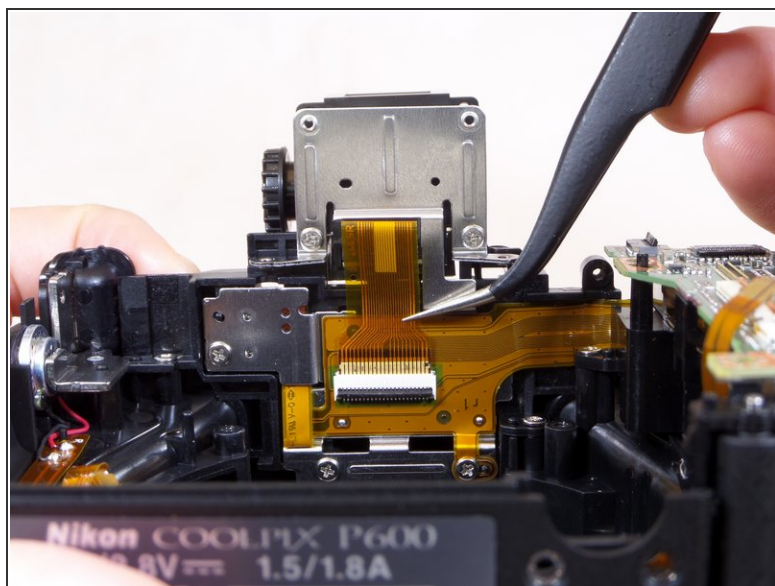
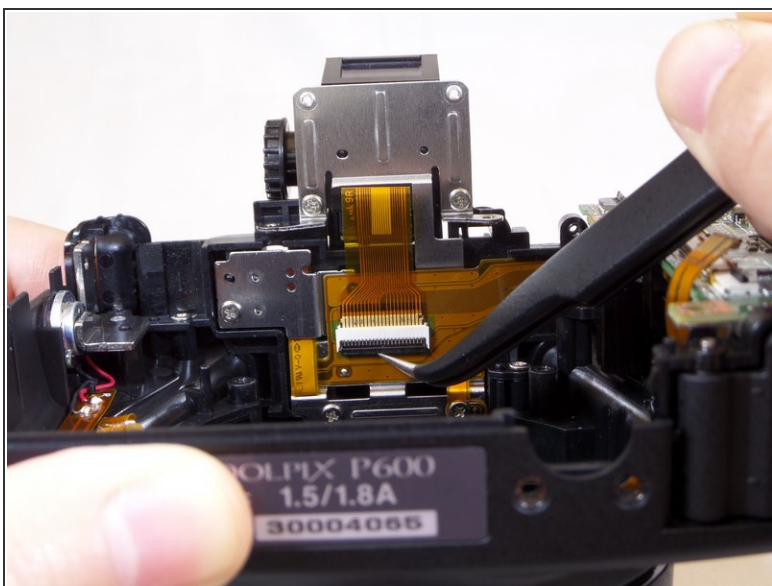
- Remove lens by pulling up vertically.
- Be careful not to damage any of the electrical ribbon on top of the lens.

Step 22 — Viewfinder



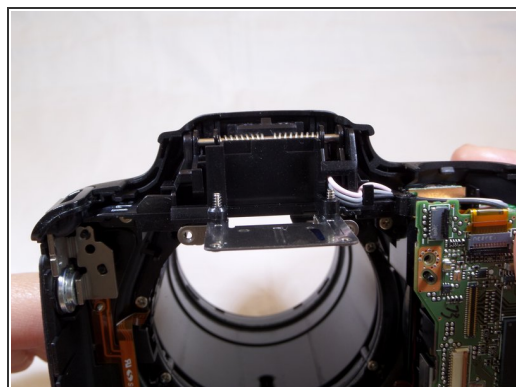
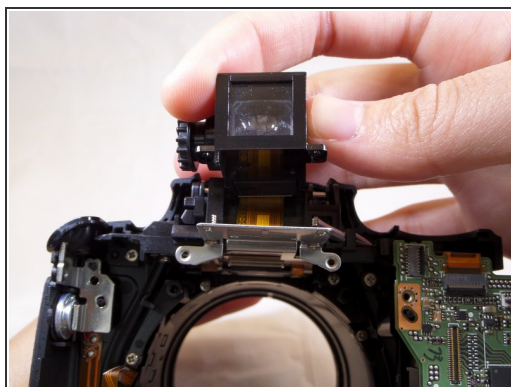
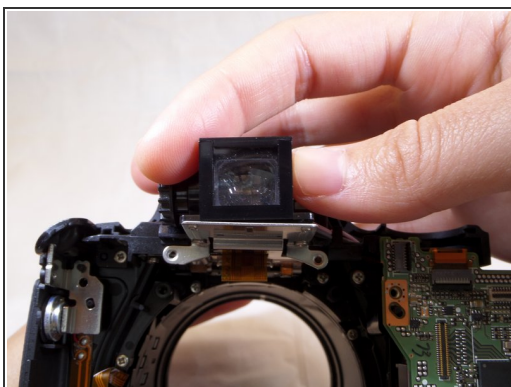
- Unscrew the 2 screws located at the top of the viewfinder.

Step 23



- Unclip and pull out the yellow wire ribbon.

Step 24



- Vertically lift the viewfinder piece for removal.
- ⓘ Carefully, as the wire ribbon is slowly removed out of its slot when viewfinder is pulled out.

To reassemble your device, follow these instructions in reverse order.