



Sony Alpha NEX-5N Battery Replacement

This guide shows precise steps on how to remove the battery from a Sony Alpha NEX-5N camera.

Written By: Demi Deletang



INTRODUCTION

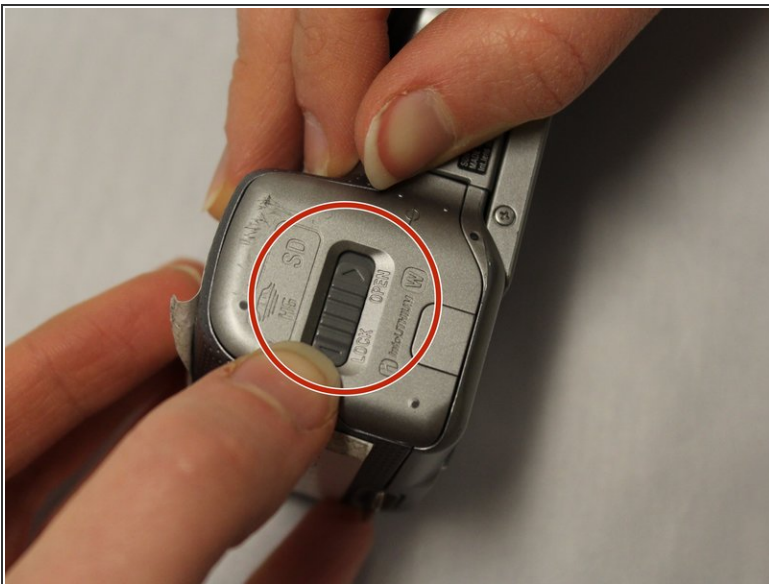
This guide will show you how to unlock the latch that holds the battery compartment, and how to eject the battery from the Sony Alpha NEX-5N.

Step 1 — Battery



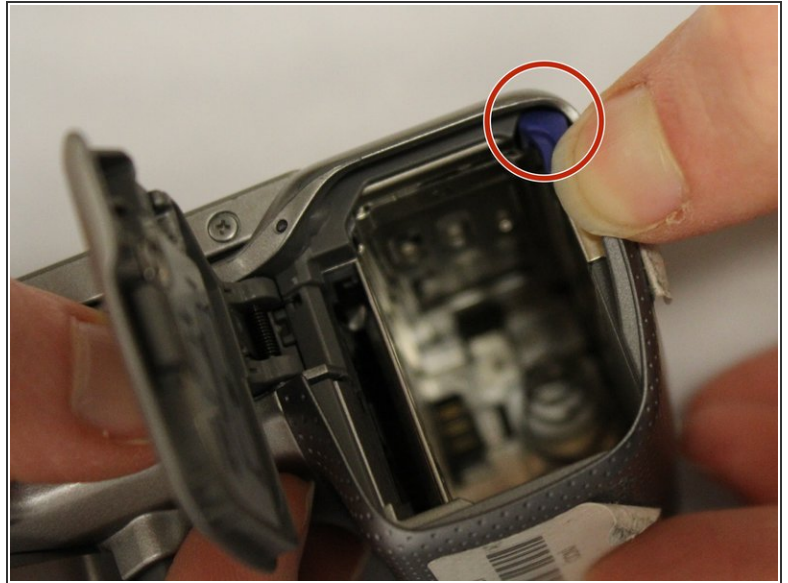
- ⚠ Before operating on this device, be sure the device is turned off.
- Turn the device off by switching the power knob to face the word "OFF".

Step 2



- Flip the device upside-down and gently place it down on a flat surface.
- Locate the battery compartment, which is indicated by a grooved latch.
- Push the latch to the right so that the arrow is positioned above the word "Open". The door should then flip upward.

Step 3



- With the battery compartment latch open, locate the lock lever.
- Press the lock lever to the left. This will eject the camera battery.

To reassemble your device, follow these instructions in reverse order.