



Canon CanoScan N670U Glass Scanner Bed Replacement

This guide will show how to carefully replace the glass scanner bed of the Canon CanoScan N670U.

Written By: Stephen Bui



INTRODUCTION

If you're encountering issues as a result from the scanner bed, this is where you will want to start.

To replace the glass scanner bed, you must:

- Remove the two plastic bars that holds the scanner bed in place.
- Carefully remove the glass scanner bed to add the replacement.



TOOLS:

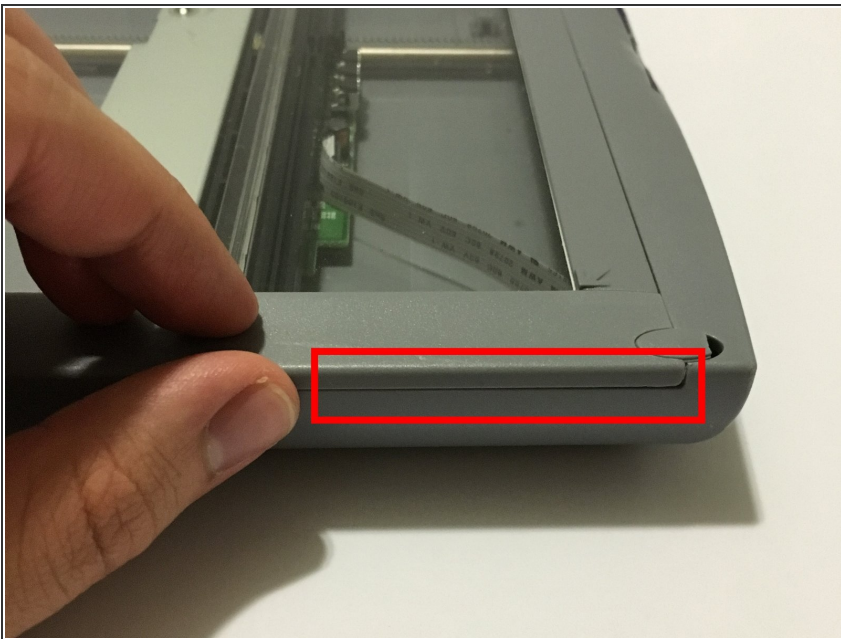
- [Metal Spudger](#) (1)
-

Step 1 — Canon CanoScan N670U Disassembly



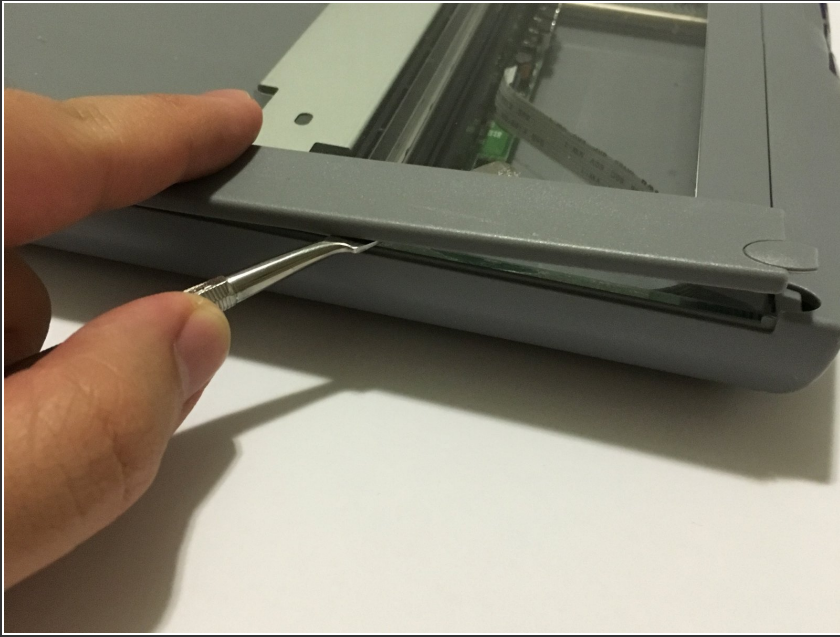
- Open up your Canon CanoScan N670U to an upright position.

Step 2



- Turn your device so that you're facing the long side of the Canon CanoScan N670U.
- Locate the small crevice between the plastic components of the scanner bed and the scanner base.

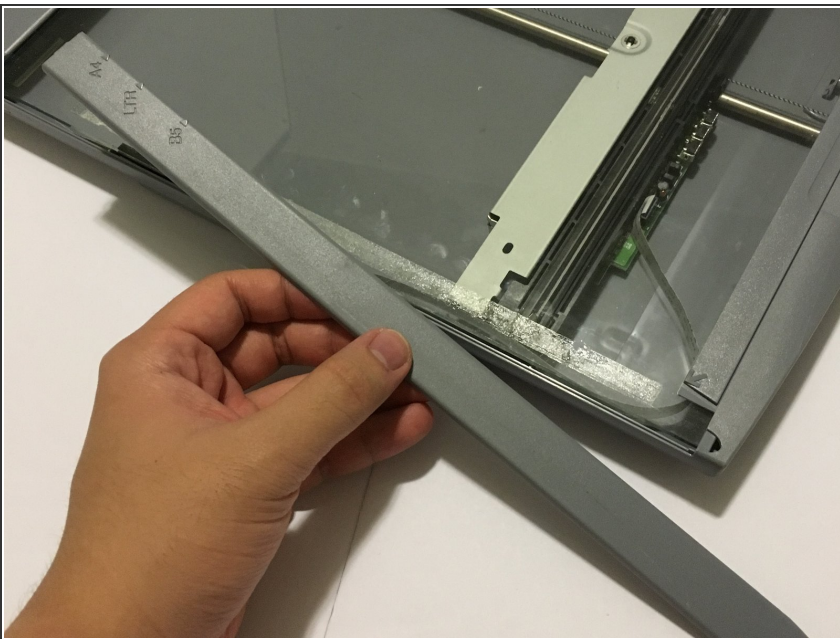
Step 3



- Carefully insert a metal spudger tool in the crevice and slowly cut through the adhesive between the plastic components.

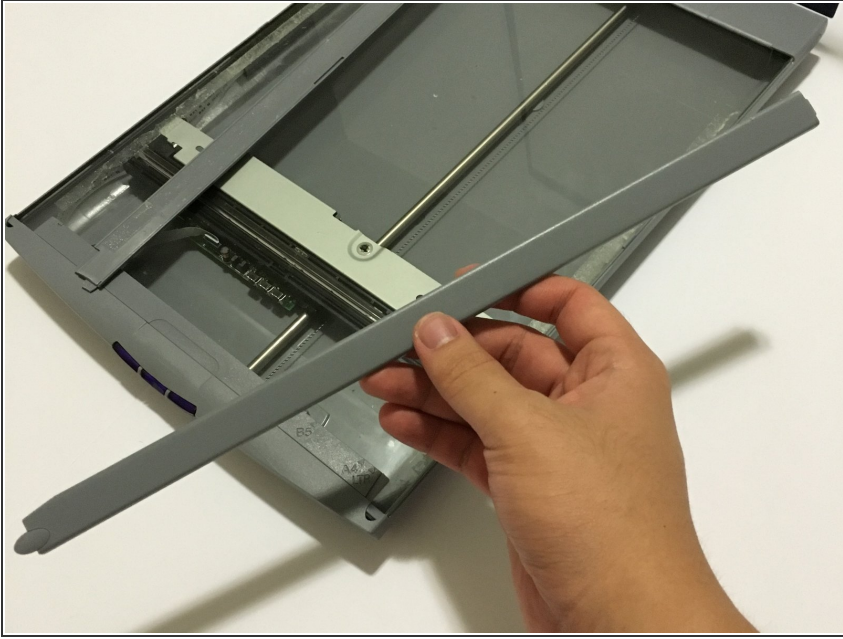
⚠ You may cut small bits of the plastic as you're slicing the adhesive. Do not forcefully bend the plastic strip as you're cutting or it will snap.

Step 4



- Once the adhesive strip is sliced through, the plastic bar that is attached should release. Set aside the plastic bar.

Step 5



- Repeat steps 2-4 for the other side of the scanner.

Step 6



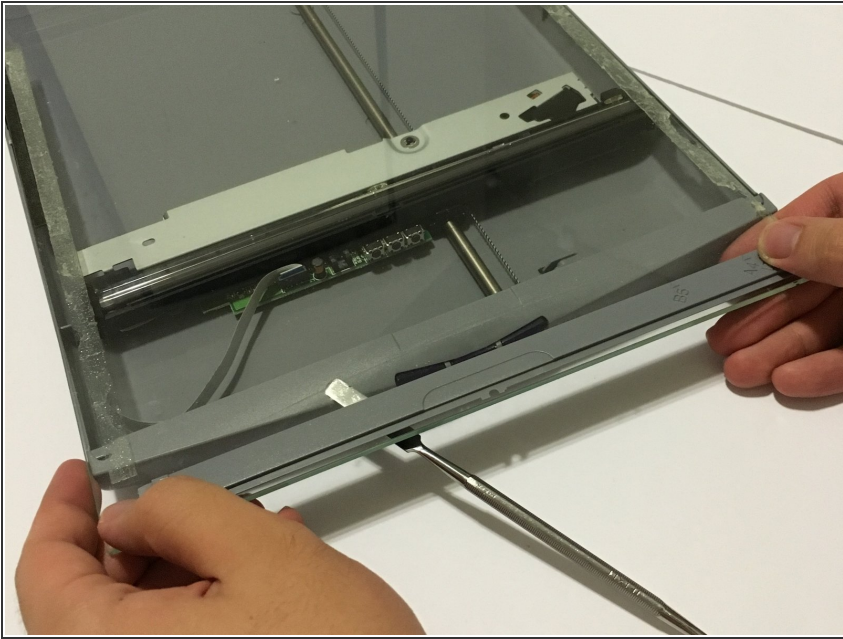
- Use your hands or a metal spudger tool to push the plastic bar at the bottom of the glass scanner bed forward until you can't push it any farther.

Step 7



- Insert the metal spudger tool underneath the glass scanner bed. The front of the scanner bed should be resting on top of the tool.

Step 8



- Slowly pull the glass scanner bed towards you and set the piece aside.

Step 9 — Glass Scanner Bed



- Replace your defective glass scanner bed with a new one.

To reassemble your device, follow these instructions in reverse order.