



Apple Wireless Keyboard (A1255) Teardown

Written By: mayer



INTRODUCTION

I bought this keyboard off eBay broken just to tear it down for posterity. I found very little that could be repaired on it. But you get to see its guts. This teardown destroys the keyboard!

TOOLS:

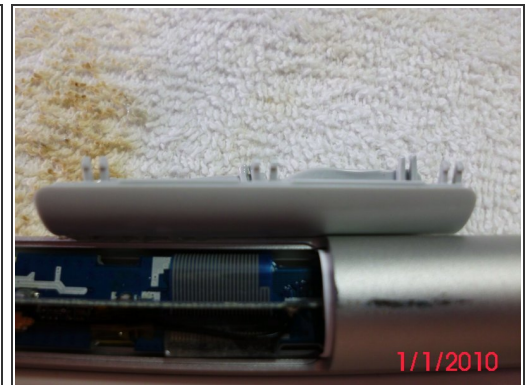
- [Coin](#) (1)
 - [Heat Gun](#) (1)
 - [Metal Spudger](#) (1)
 - [iFixit Opening Tools](#) (1)
 - [Spudger](#) (1)
-

Step 1 — Apple Wireless Keyboard (A1255) Teardown



- To open the battery compartment, on the left side of the keyboard use a coin to loosen the screw off cover.
- The keyboard's power button is on the right side

Step 2



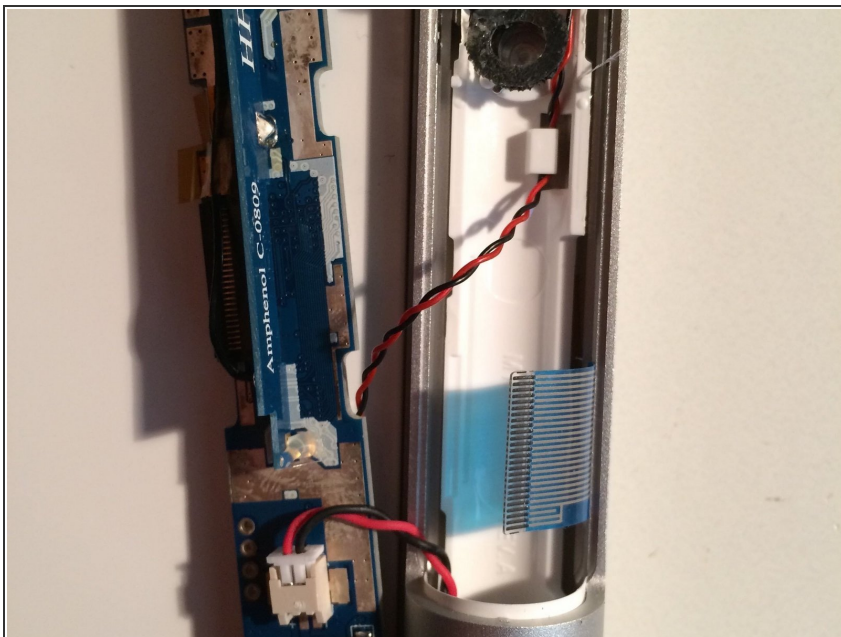
- The upper left hand corner (when turned over) of the keyboard contains the On/Off switch and the bluetooth board.
- The removable plastic covering plate may be removed by squeezing it together to release the retaining hooks, Do one side at a time, Squeeze and rotate upward.

Step 3



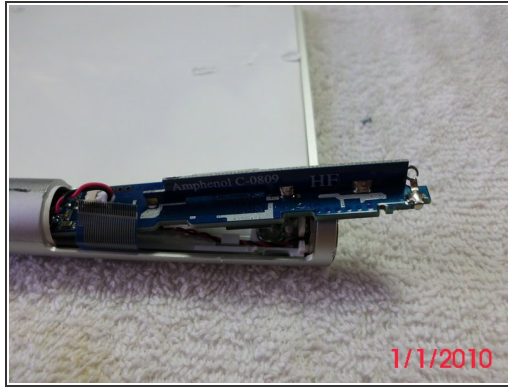
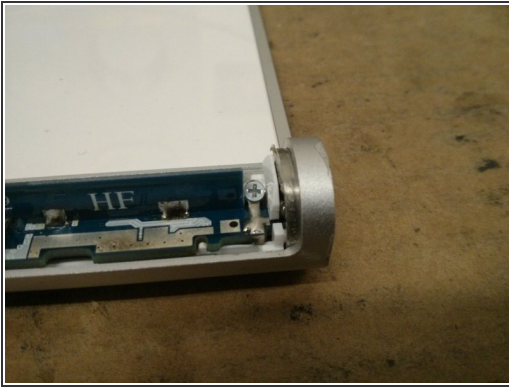
- The plastic is very stiff and there are three sets of two hooks on each side. This one has been deformed on the back right hand side from a heat gun.
- There is a 90 mm by 12 mm circuit board intersected by a vertical 53 mm by 7 mm board forming a T shape. The vertical board appears to be the bluetooth antenna.
- Part # 820-2181 is printed on the board.
- This board also has the Power Indicating LED light. This board fits inside the round casing unit by the power button. The power button, battery connector and keyboard all connect to this board.

Step 4



- Using the tip of a spudger, flip up the keyboard ribbon cable retaining flap. Pull the keyboard ribbon cable straight out of its socket. It slides out from under the 'vertical' board. Shouldn't be too difficult.

Step 5



- The board is held in place with a small Phillips screw.
- After removing the screw the board can be gently extricated from the tube. The white plastic disc to the right of the screw needs to be pushed to the right to free up the board.
- Note the red and black wires. This connector inserts laterally. The wires go to the battery receptor in the middle of the tube.
- The screw is in two parts, a Phillips screw goes into a post screw. The top screw holds in the board and the post screw holds the On/Off switch in place.

Step 6



- Here's the obverse of the board. There is a black two prong connector that plugs into the board from the power switch.
- The wires run under a small plastic retaining tab and can be moved downward and out.

Step 7



- The power switch is held in place by the Main Board Bracket. Apple Part # 815-9674. The end of the bracket has a small round protrusion that fits into a crescent shaped cut out on the power switch.
- The Power Button Board can be pushed out from the inside.
- ⓘ The red wire goes to "TP2", the black wire to "TP1"

Step 8



- The internal battery terminal can be knocked out with a long screwdriver. It is spring loaded and held in place by a metal expansion ring.
- I could not discern how the exact placement is determined as the interior of the tube appears to be perfectly smooth.

Step 9



- More photos of the battery terminal.

Step 10



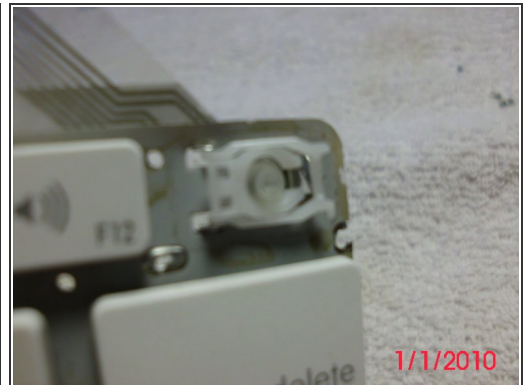
- Removal of the back of the keyboard was done using a heat gun and a scalpel.
- Heating the board quickly warps and destroys it.
- Glue is all over the bottom plate. It was separated by pulling it apart and slicing the glue with a scalpel.

Step 11



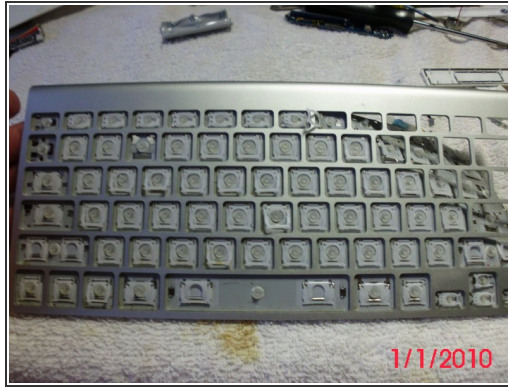
- There are ten 2 mm screws located on the back of the board.

Step 12



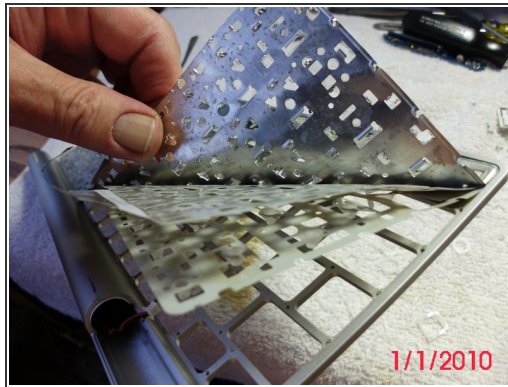
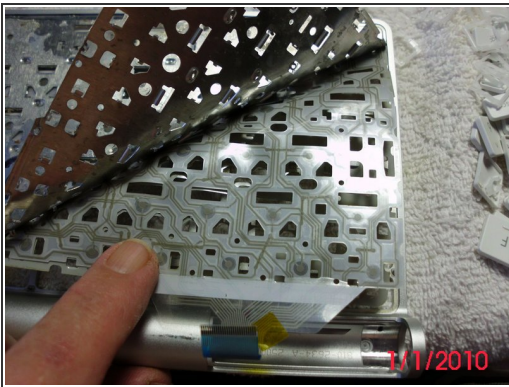
- The keyboard is pushed away from the frame.

Step 13



- The layers are pulled apart. Frame, plastic separator layer, printed circuit layer

Step 14



- Here can be seen the layers of the frame, separator, circuit board and metal back plate.

Step 15



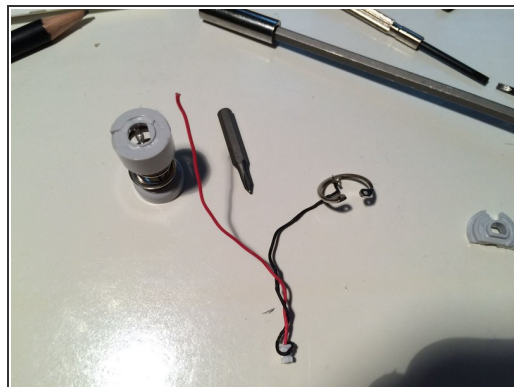
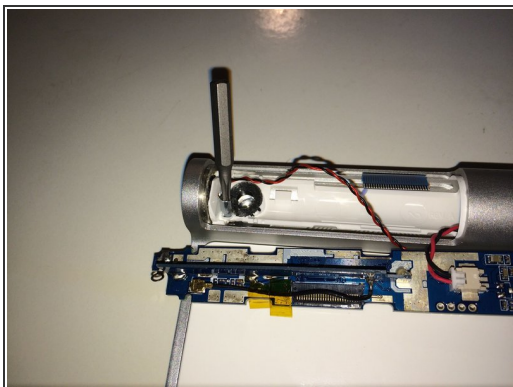
- Here we can see the different types of key mounting and scissor mountings

Step 16



- Keys can be easily removed by using a scalpel or fingernail under the left side and lifted.

Step 17 — Close-up of the compartments



- Here you can see the pole that the screw went in. You can remove this, which allows you to remove the power button and the white housing.
- Also, here is the battery terminal (spring loaded) which had to be forced out. It's held in the tube by the expansion ring, which unfortunately is the best-made bit of this keyboard. I forced it out using a long screw driver, but unfortunately broke the wires. Keyboard had died anyway, thanks Apple.

To reassemble your device, follow these instructions in reverse order.