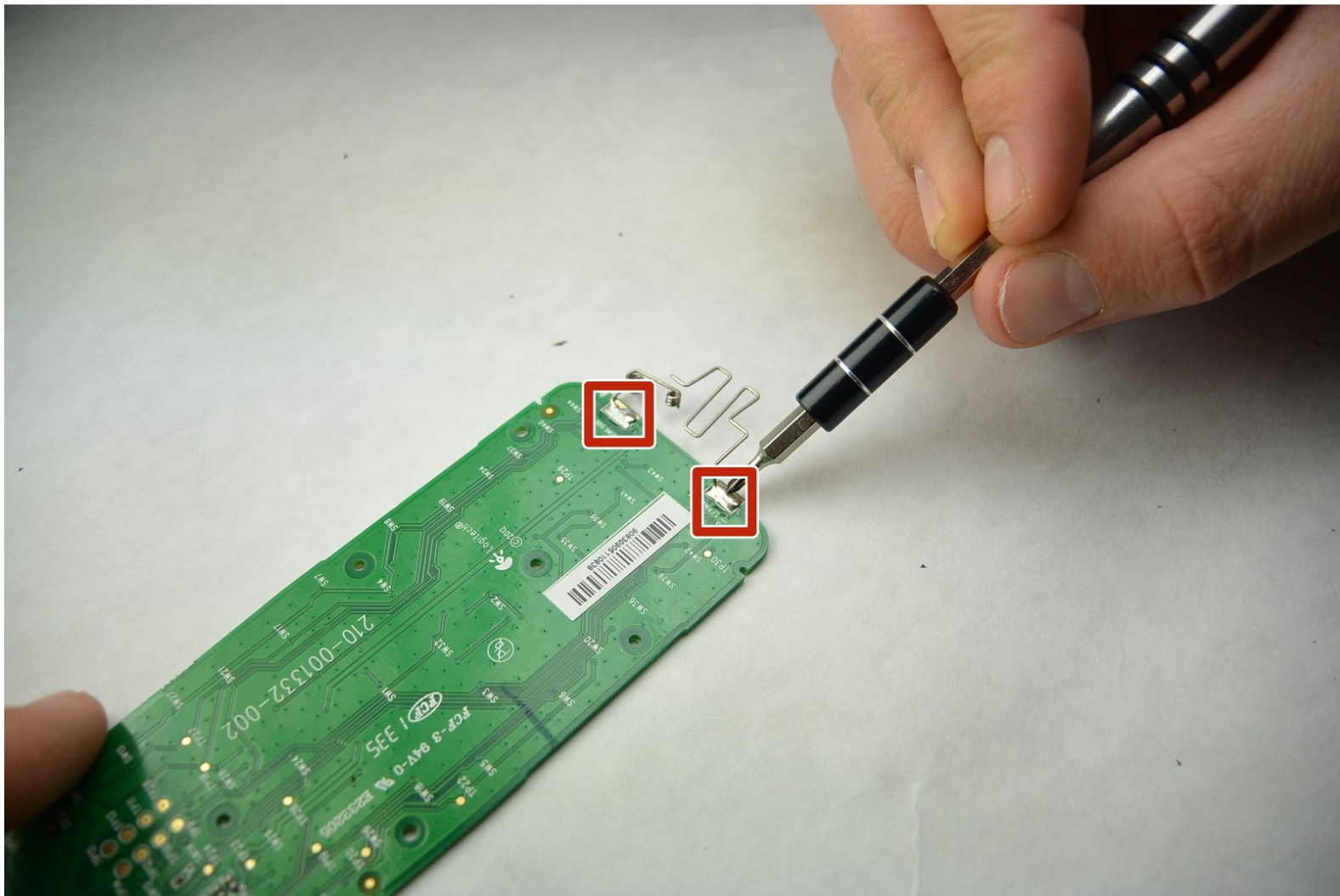




# Logitech Harmony Smart Control Battery Contact Replacement

This guide will explain the steps to replace the battery contact in your harmony remote.

Written By: Josh Hendricks



# INTRODUCTION

This guide requires soldering, for soldering guide click below.

[Soldering Guide](#)



## TOOLS:

- [Phillips #00 Screwdriver](#) (1)
- [Metal Spudger](#) (1)
- [Soldering Iron](#) (1)



## PARTS:

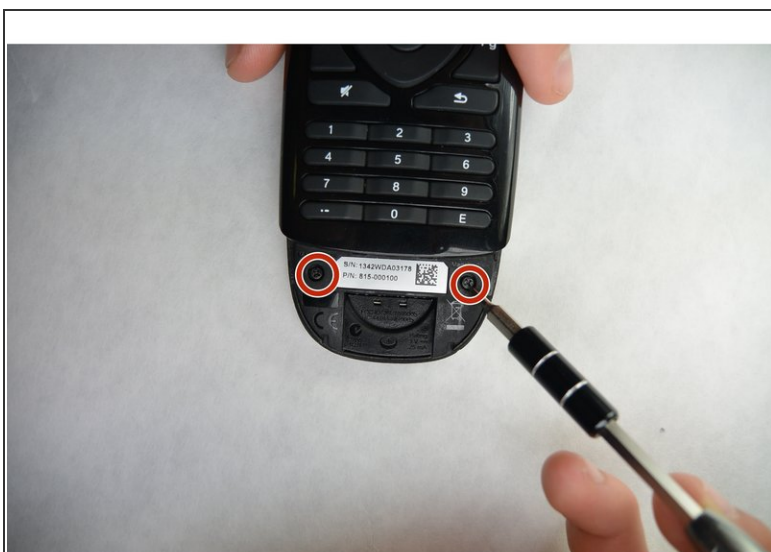
- [Solder](#) (1)

## Step 1 — Battery Contact



- Use both thumbs to slide the grooved cover off of the remote
- Once the cover is off, remove the battery.

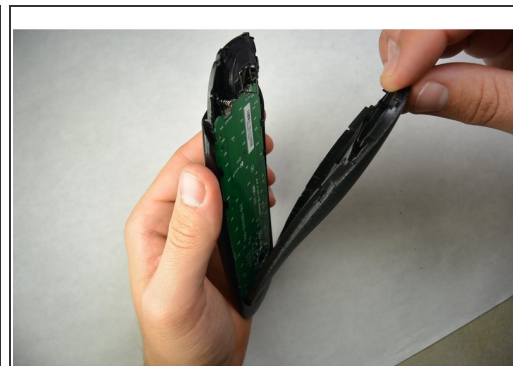
## Step 2



- Locate both of the 4mm Phillips screws on the remote. Using the PH00 bit, remove the screws.

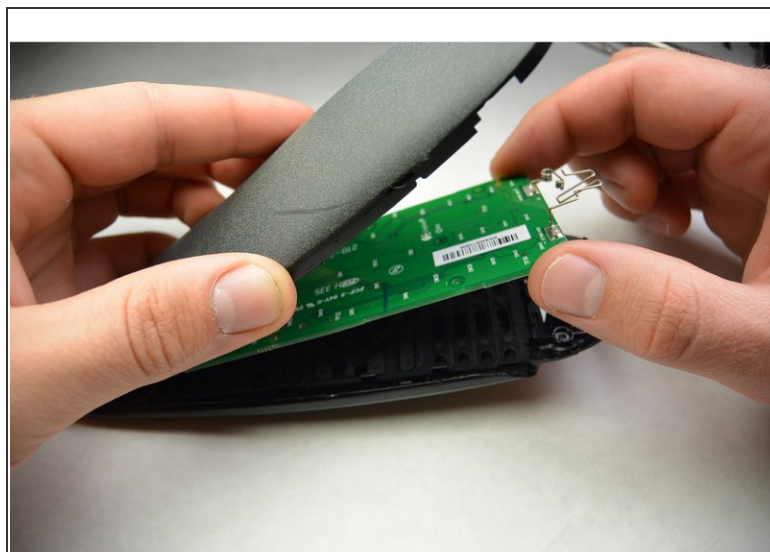
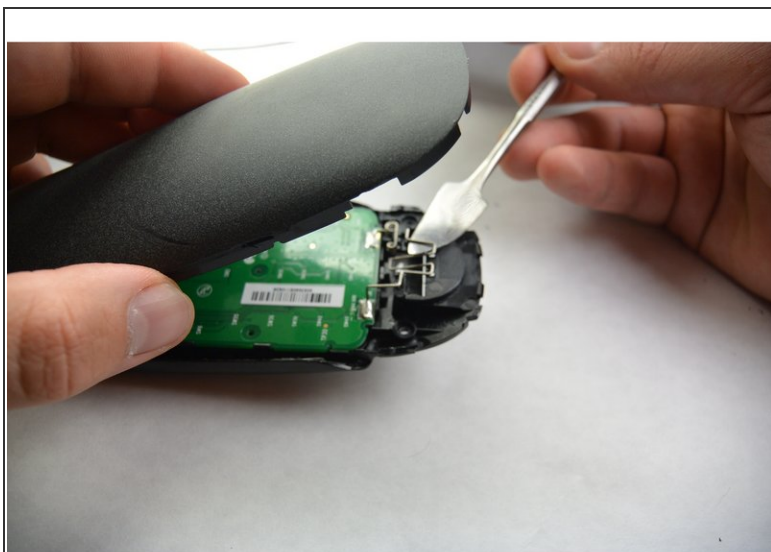


### Step 3



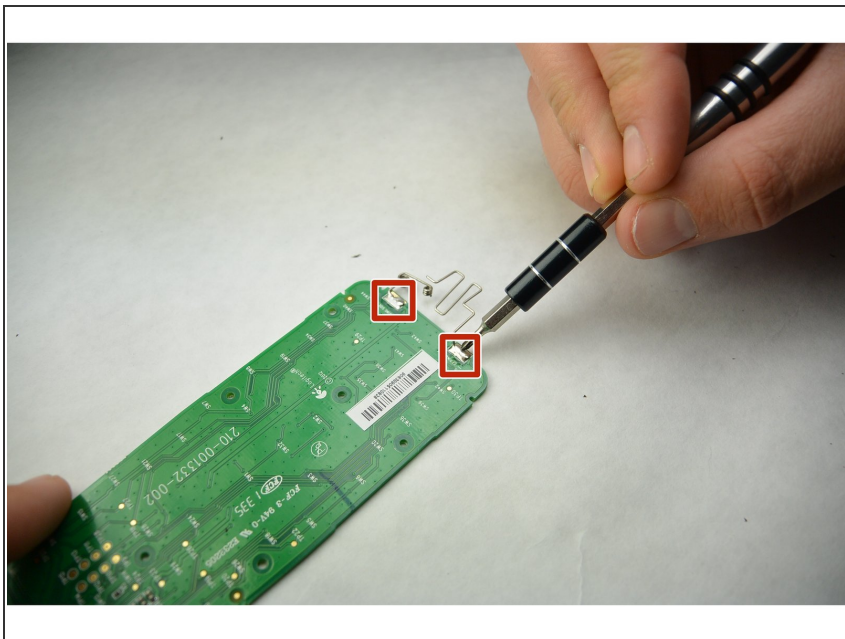
- Use a flat screwdriver or a prying tool to split the remote and separate the two pieces. Start from the bottom.

### Step 4



- Using the metal piece from the housing, pry the circuit board upwards. Do not disconnect it from the board.
- Slide the circuit board out from the housing .

## Step 5



- Locate the battery contacts on the circuit board.
- Using a soldering iron, remove the old solder and the battery contacts. Install new battery contacts and solder them.

To reassemble your device, follow these instructions in reverse order.