



ASUS D550MA-DS01 DVD Drive Replacement

This guide will assist you with replacing the DVD drive in your laptop.

Written By: Richard Johnson



INTRODUCTION


If your DVD drive is not playing your favorite movies, it may be time to replace it. This guide will walk you through how to remove your DVD drive.

TOOLS:

- [Phillips #1 Screwdriver](#) (1)
 - [Spudger](#) (1)
-


Step 1 — Keyboard Module



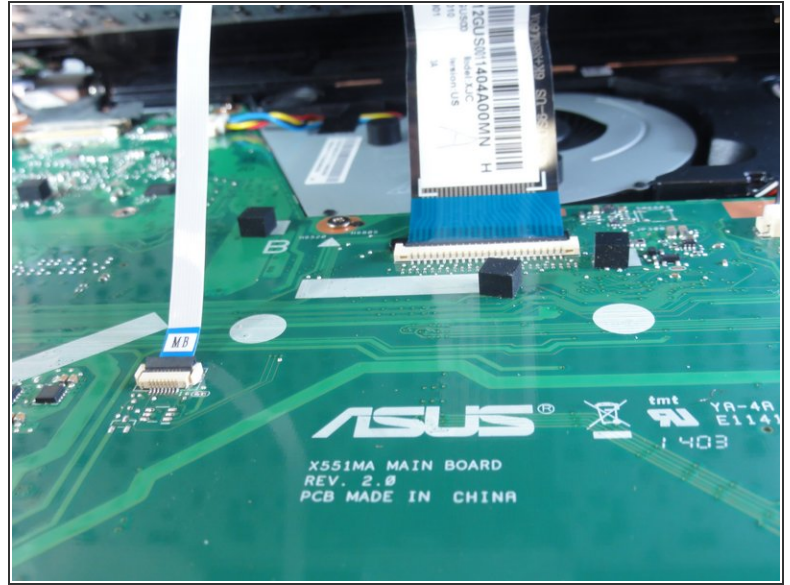
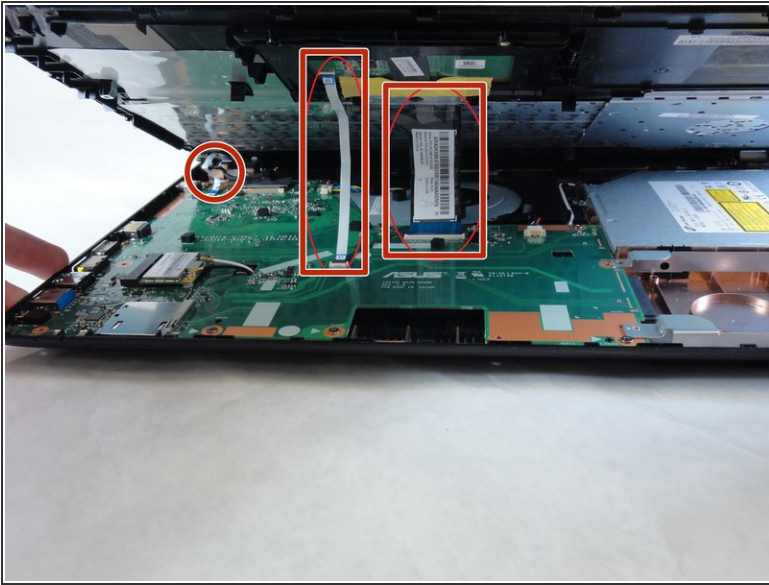
-  Before you begin, be sure to turn off your laptop and unplug it from the outlet.
- Use a Philips #1 screwdriver to remove the nine screws from the back cover.

Step 2



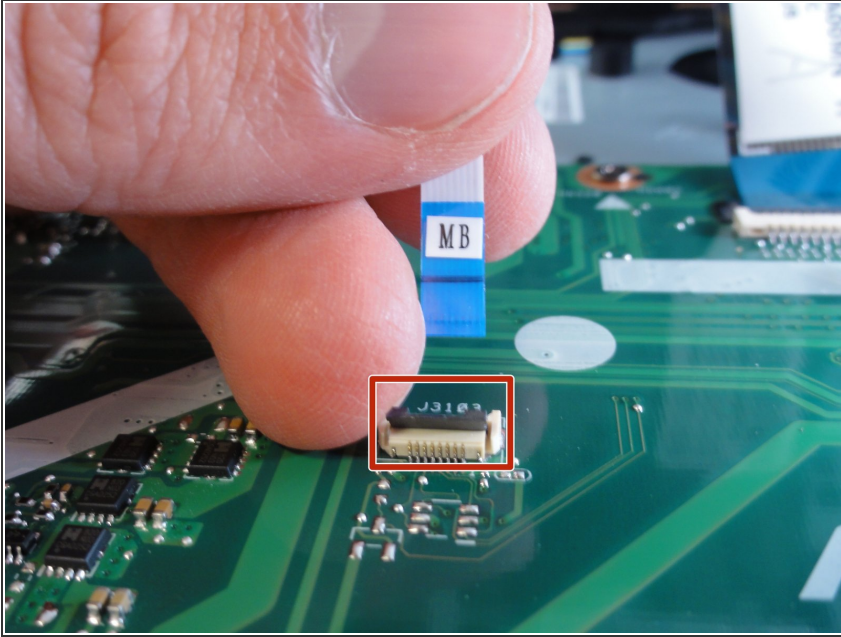
- Turn the laptop over and open the display.
 - Insert the flat edge of the spudger into the crease of the keyboard cover.
 - While the spudger is in the crease, carefully pry open the casing by sliding the spudger along the edge.
-  Do not use excessive force to pry open the lid. You should hear each plastic clip snap open as you run the spudger along the edge.

Step 3



- ❗ Make sure that the entire cover has been released from the plastic clips.
- Slowly lift the cover open from the front of the laptop, but do not completely remove it.
- Note the locations of the three white and blue data cables connecting to the keyboard to the computer's main board.

Step 4



i If you are only replacing the battery, you can skip this step and the next. Shift the keyboard module away from the display and set it such that the fragile flex cables are not strained.

- Disconnect the three data cables from the motherboard.

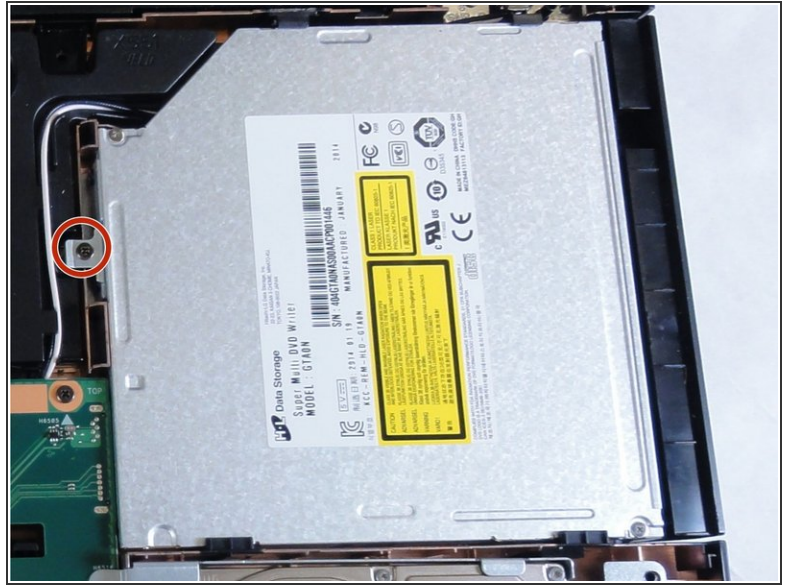
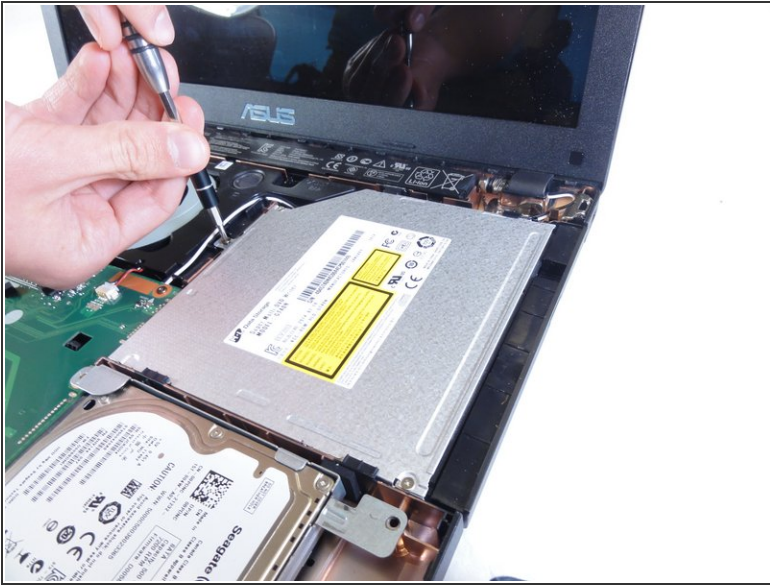
i To unlock a [ZIF connector](#), use the tip of a spudger or your fingernail to flip up the small, hinged locking flap. Carefully slide the unlocked cable out of the socket.

Step 5



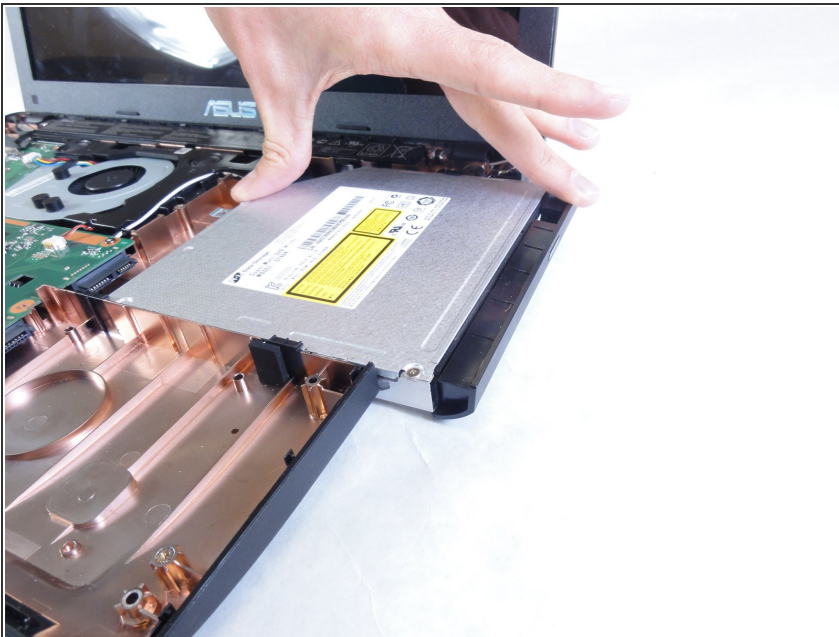
- Remove the fully disconnected keyboard module from the laptop.

Step 6 — DVD Drive



- Remove the single screw that is holding the drive in place using the Phillips #1 Screwdriver.

Step 7



- Slide the drive out to the right of the laptop to disconnect from the motherboard.
- ⚠️ Lifting the drive straight out without sliding to the right will damage the motherboard.

To reassemble your device, follow these instructions in reverse order.