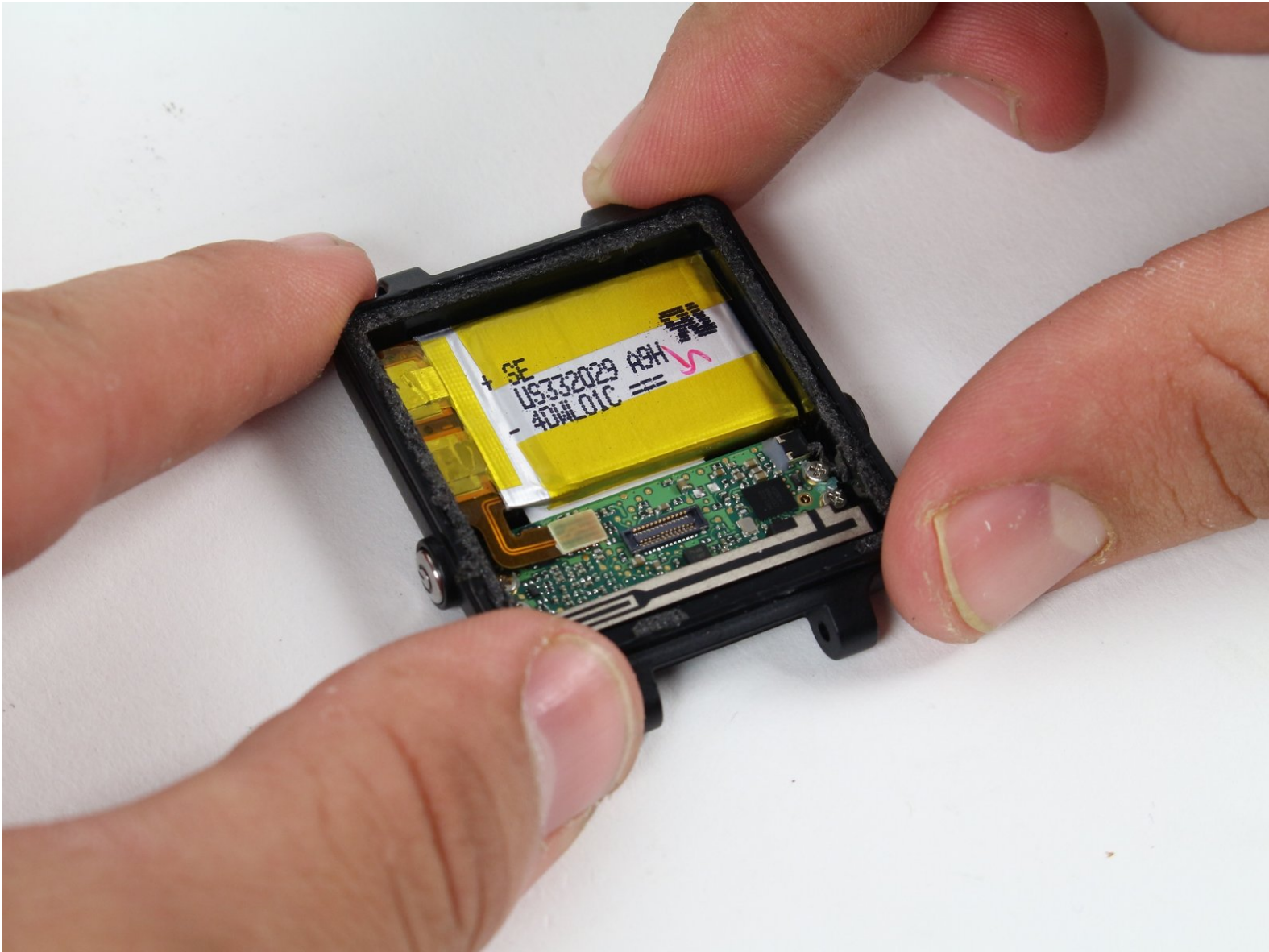




Garmin Vivoactive Battery Replacement

Does your watch go dark shortly after charging? This guide will help you replace a dead battery.

Written By: Michael Clark



INTRODUCTION

After many cycles of charging and discharging, batteries become fatigued and lose their capacity to hold a charge. Manufacturing defects and improper storage can also lead to your watch battery not being as efficient as it once was. This straightforward guide will walk you through the steps of replacing your battery whatever the cause of its failure.

This procedure will fix any current problems you have with your battery. We also recommend you take the time to learn about proper charging and storage techniques to get the maximum life cycle out of your battery. Some of the basic steps points include:

- Store the device in a room temperature space out of direct sunlight
- Charge the device daily or at least every other day
- Do not let it discharge below 5%

Otherwise we hope this process goes well for you, good luck!



TOOLS:

- [iFixit Opening Picks \(Set of 6\)](#) (1)
- [T5 Torx Screwdriver](#) (1)
- [T6 Torx Screwdriver](#) (1)
- [iFixit Opening Tool](#) (1)



PARTS:

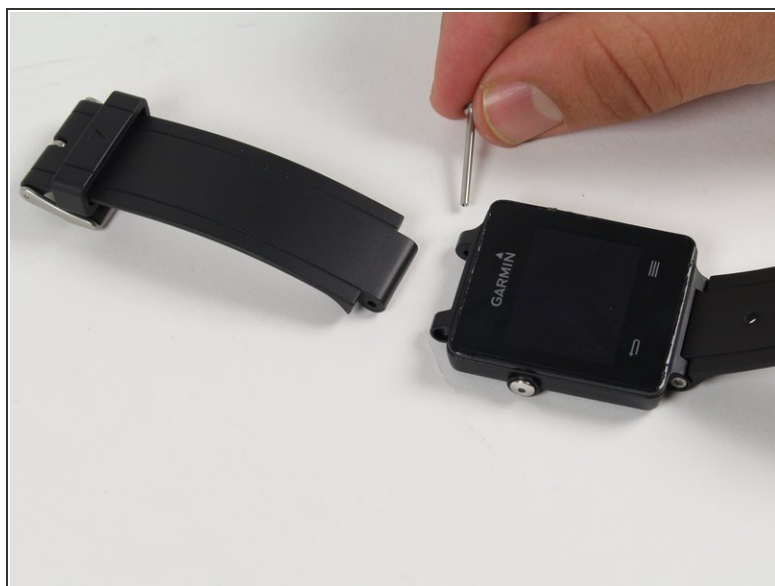
- [Garmin Vivoactive Battery](#) (1)

Step 1 — Wristband



- Hold the the metal screwdriver, with a T5 Torx bit, in your dominant hand.
- Hold the rubber screwdriver, with a Hex T6 Torx bit, in your other hand.
- While holding the rubber screwdriver in place, simultaneously unscrew the pin (counterclockwise) with the metal screwdriver in your dominant hand.

Step 2



- Once the 1mm screw is removed, reinsert the metal screwdriver in that same hole.
- Gently push the strap's pin out. It will begin to protrude from the other end.
- Use your fingers to grab the exposed pin and slide it free. The strap should now be disconnected from the device.

Step 3 — Display Unit



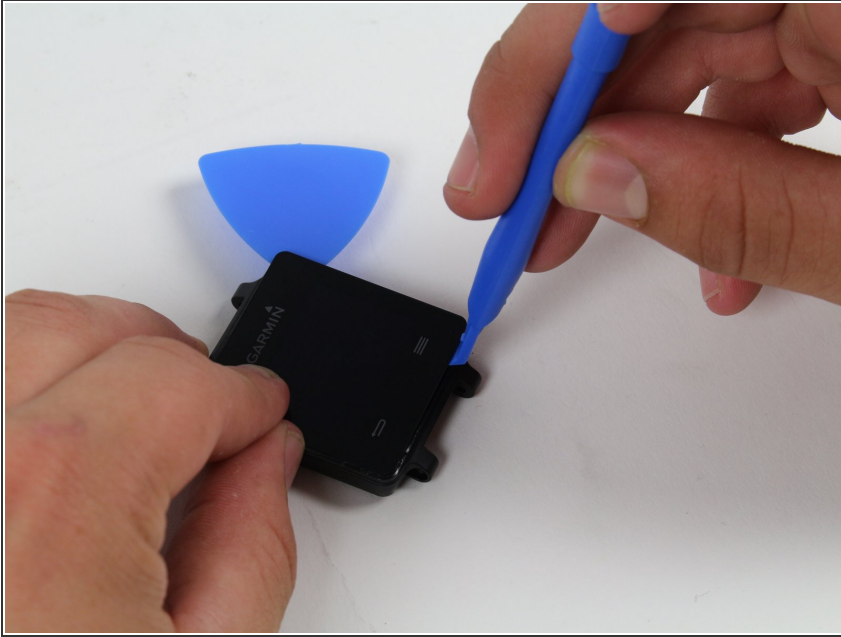
- Place a heated iOpener over the display to loosen the adhesive.
 - After about a minute, the iOpener may be removed.
- ⓘ For more in depth instructions on using the iOpener, refer to the [iOpener guide](#).

Step 4




- Place the blue plastic opening tool in-between the screen and plastic casing of the watch and slowly pry up one side of the screen.

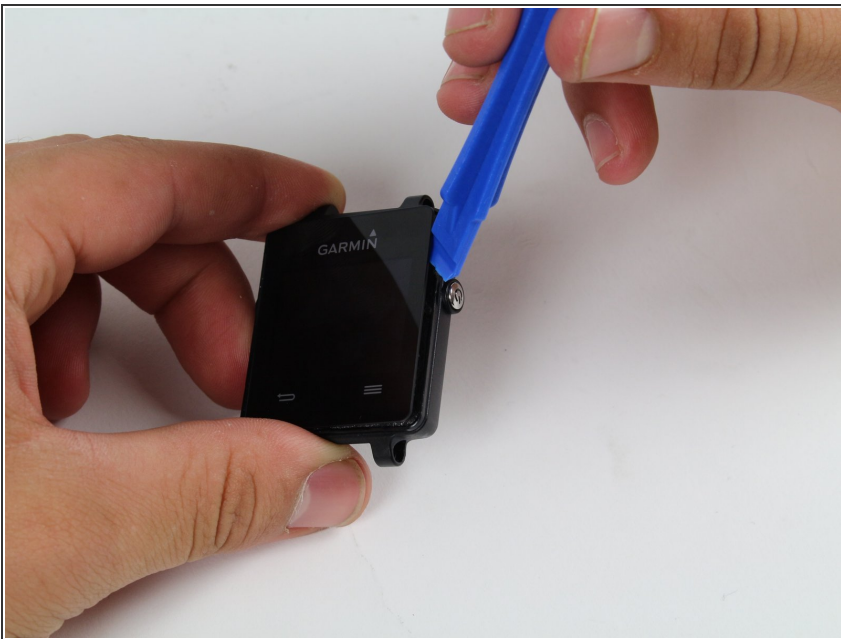
Step 5



- Once the first side has come free, wedge the blue pick in between the screen and watch unit on that side.
- Complete one pass around the perimeter of the screen to break the adhesive bond on all four sides.

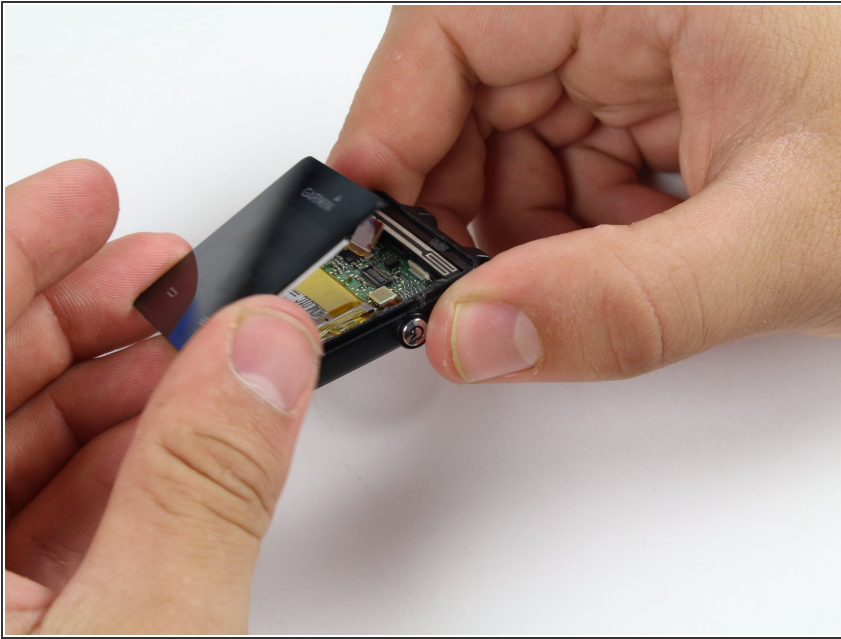
 **Insert it a minimal distance to avoid damaging internal components.**

Step 6



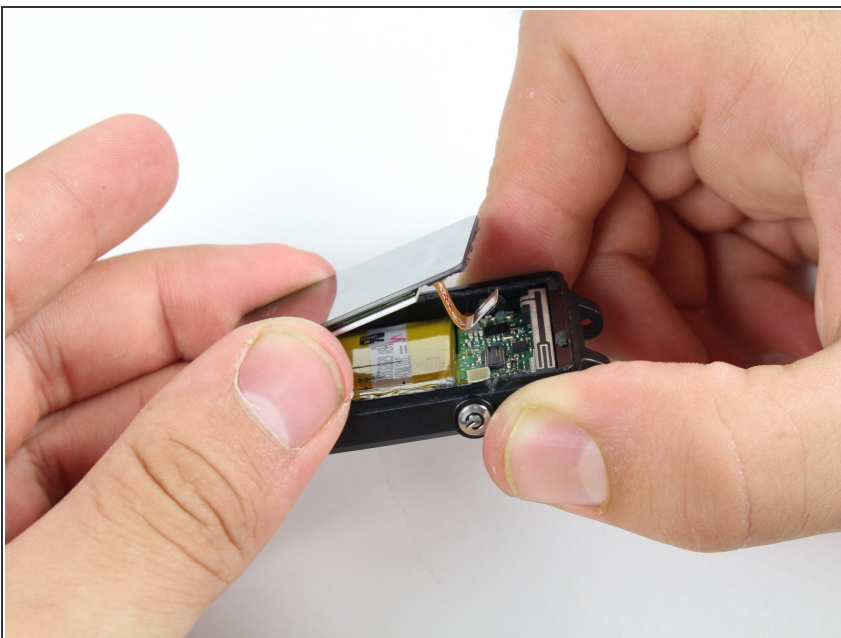
- Use the blue plastic opening tool to pry up the side of the glass. Raise it to a point where your fingernail can fit in the gap.
- Do the same on the opposite side of the device until you have a good grip of the screen.

Step 7



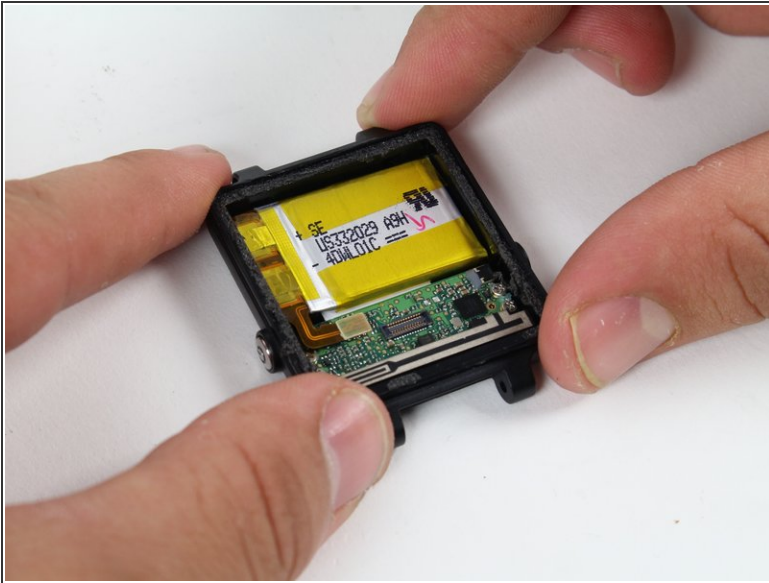
- Obtain a careful grip of the screen from two of its sides.
- Slowly lift the screen off of the case. Separate it just enough so as not to damage the connection to the motherboard.

Step 8



- Detach the orange tab that connects the screen to the motherboard with a gentle uplift using a plastic opening tool.
- Upon completing this step, the screen should be free from the rest of the device.

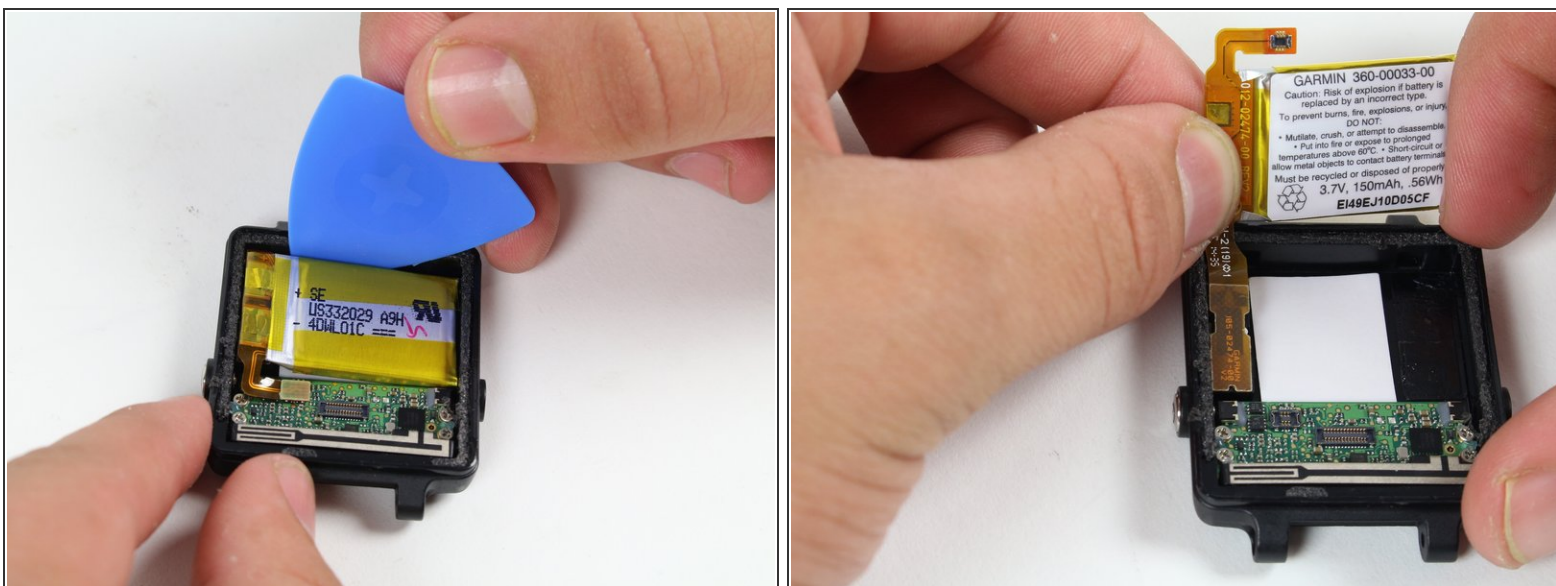
Step 9 — Battery



- Follow previous guides until you've exposed the battery as shown.
- Begin by removing the battery connector tab.

⚠ Be sure not to use a metal implement or your fingers to remove this tab. Doing so may cause personal harm or damage to the electrical components.

Step 10



- Use a plastic opening pick to gently pry out the battery as shown.

⚠ The battery is Lithium Polymer, follow safe handling procedures and DO NOT deform it upon removal.

Step 11



- With the battery loose from the case, rotate it to expose the attached tab
- Gently pry up the attached tab with a fingernail.
- i** Keep the vibrator, circled in red, as you may need to solder it to the new battery upon re-installation later.

To reassemble your device, follow these instructions in reverse order.