



Garmin Vivoactive Side Button Replacement

Use this guide to replace either of the broken side buttons.

Written By: Tessa Gunnin



INTRODUCTION

The continual use of the Vivoactive power button and action key may lead to dysfunctional buttons. This problem can be solved with the replacement of the buttons themselves to ensure all components are working correctly.



TOOLS:

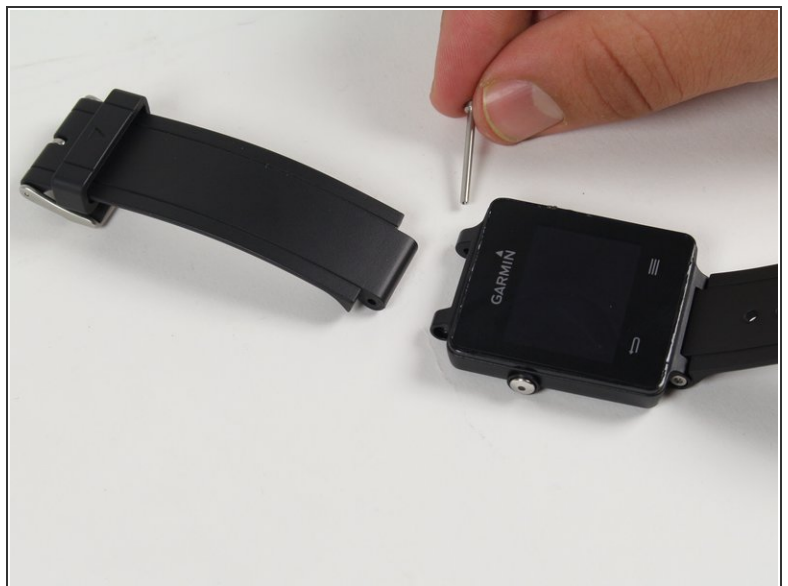
- [Precision Tweezers Set](#) (1)
 - [Magnetic Project Mat](#) (1)
 - [iFixit Opening Picks \(Set of 6\)](#) (1)
 - [iOpener](#) (1)
 - [Phillips #00 Screwdriver](#) (1)
 - [iFixit Opening Tool](#) (1)
 - [Spudger](#) (1)
 - [T5 Torx Screwdriver](#) (1)
 - [T6 Torx Screwdriver](#) (1)
-

Step 1 — Wristband



- Hold the the metal screwdriver, with a T5 Torx bit, in your dominant hand.
- Hold the rubber screwdriver, with a Hex T6 Torx bit, in your other hand.
- While holding the rubber screwdriver in place, simultaneously unscrew the pin (counterclockwise) with the metal screwdriver in your dominant hand.

Step 2



- Once the 1mm screw is removed, reinsert the metal screwdriver in that same hole.
- Gently push the strap's pin out. It will begin to protrude from the other end.
- Use your fingers to grab the exposed pin and slide it free. The strap should now be disconnected from the device.

Step 3 — Display Unit



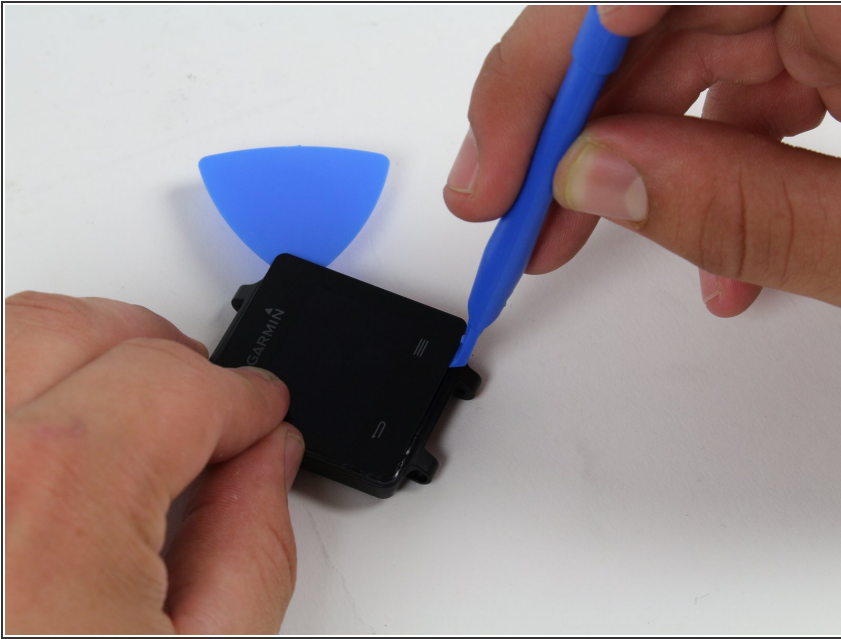
- Place a heated iOpener over the display to loosen the adhesive.
- After about a minute, the iOpener may be removed.
- ① For more in depth instructions on using the iOpener, refer to the [iOpener guide](#).

Step 4




- Place the blue plastic opening tool in-between the screen and plastic casing of the watch and slowly pry up one side of the screen.

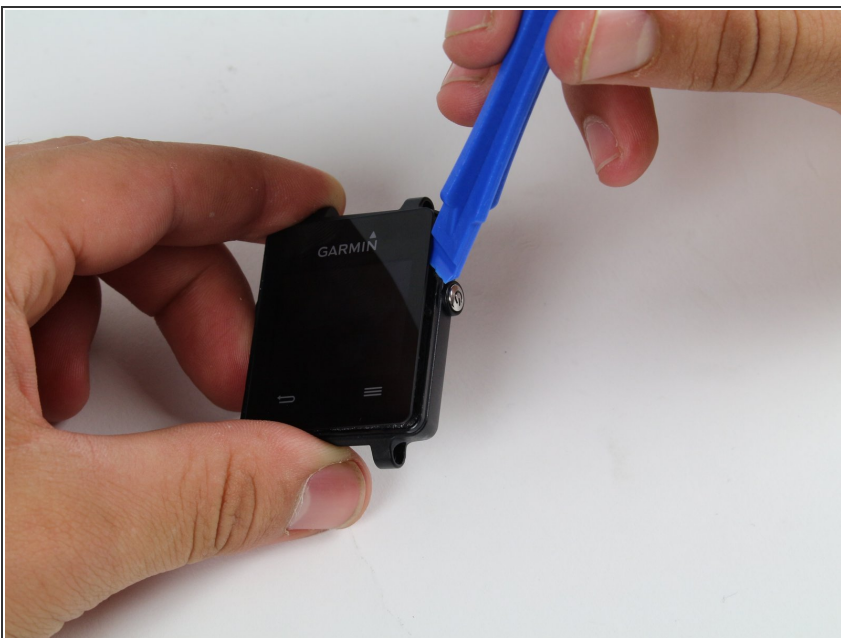
Step 5



- Once the first side has come free, wedge the blue pick in between the screen and watch unit on that side.
- Complete one pass around the perimeter of the screen to break the adhesive bond on all four sides.

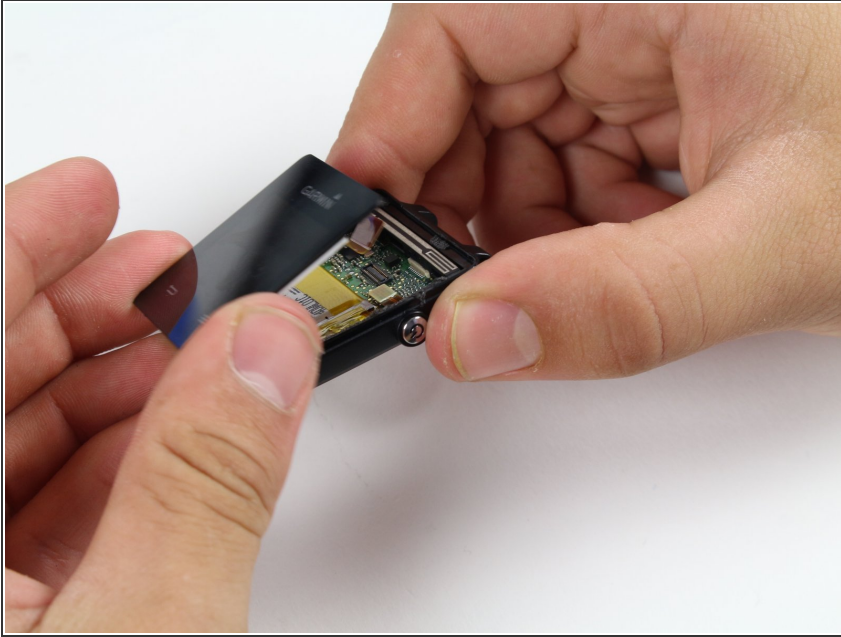
 **Insert it a minimal distance to avoid damaging internal components.**

Step 6



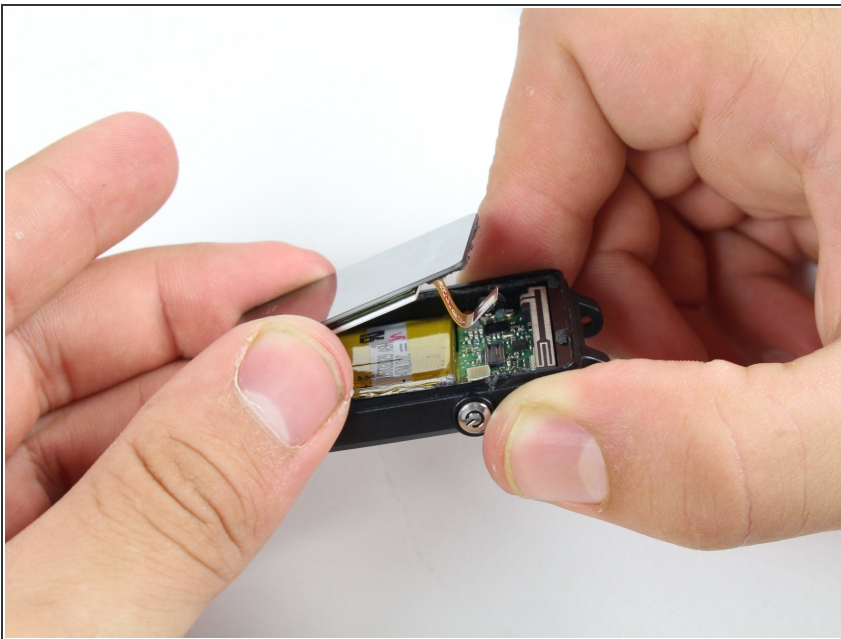
- Use the blue plastic opening tool to pry up the side of the glass. Raise it to a point where your fingernail can fit in the gap.
- Do the same on the opposite side of the device until you have a good grip of the screen.

Step 7



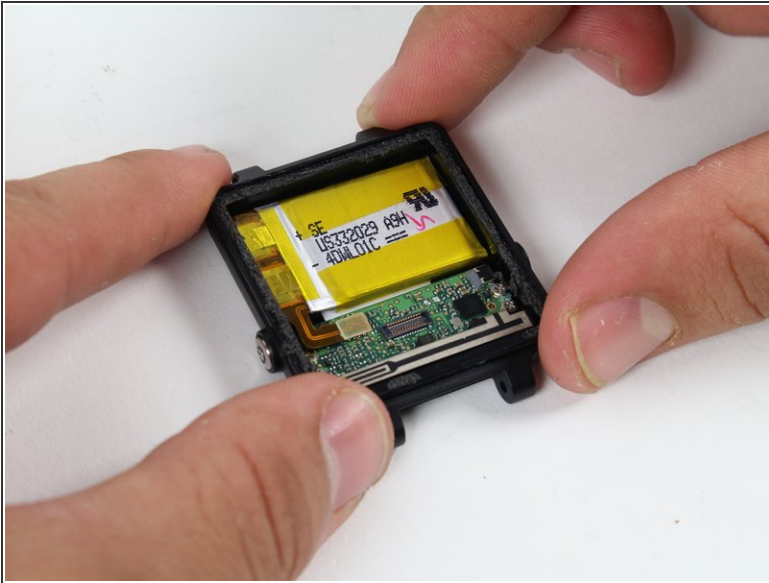
- Obtain a careful grip of the screen from two of its sides.
- Slowly lift the screen off of the case. Separate it just enough so as not to damage the connection to the motherboard.

Step 8



- Detach the orange tab that connects the screen to the motherboard with a gentle uplift using a plastic opening tool.
- Upon completing this step, the screen should be free from the rest of the device.

Step 9 — Battery



- Follow previous guides until you've exposed the battery as shown.
- Begin by removing the battery connector tab.

⚠ Be sure not to use a metal implement or your fingers to remove this tab. Doing so may cause personal harm or damage to the electrical components.

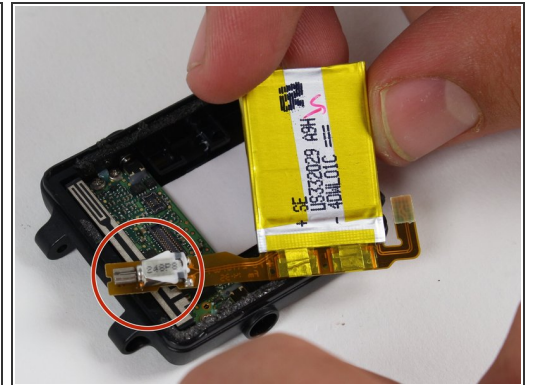
Step 10



- Use a plastic opening pick to gently pry out the battery as shown.

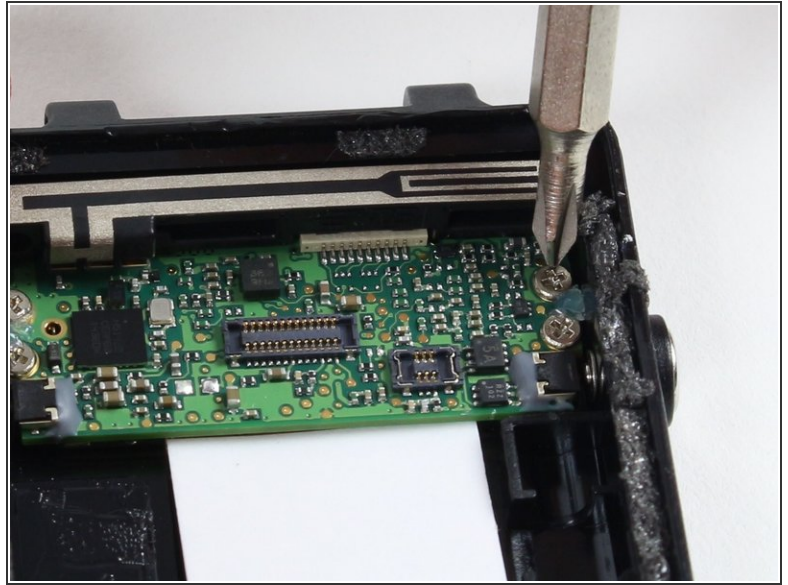
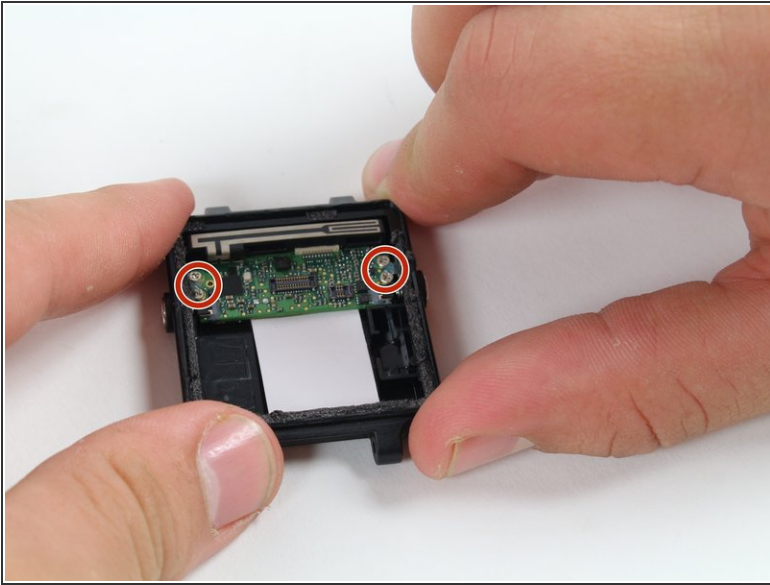
⚠ The battery is Lithium Polymer, follow safe handling procedures and **DO NOT** deform it upon removal.

Step 11



- With the battery loose from the case, rotate it to expose the attached tab
- Gently pry up the attached tab with a fingernail.
- i** Keep the vibrator, circled in red, as you may need to solder it to the new battery upon re-installation later.

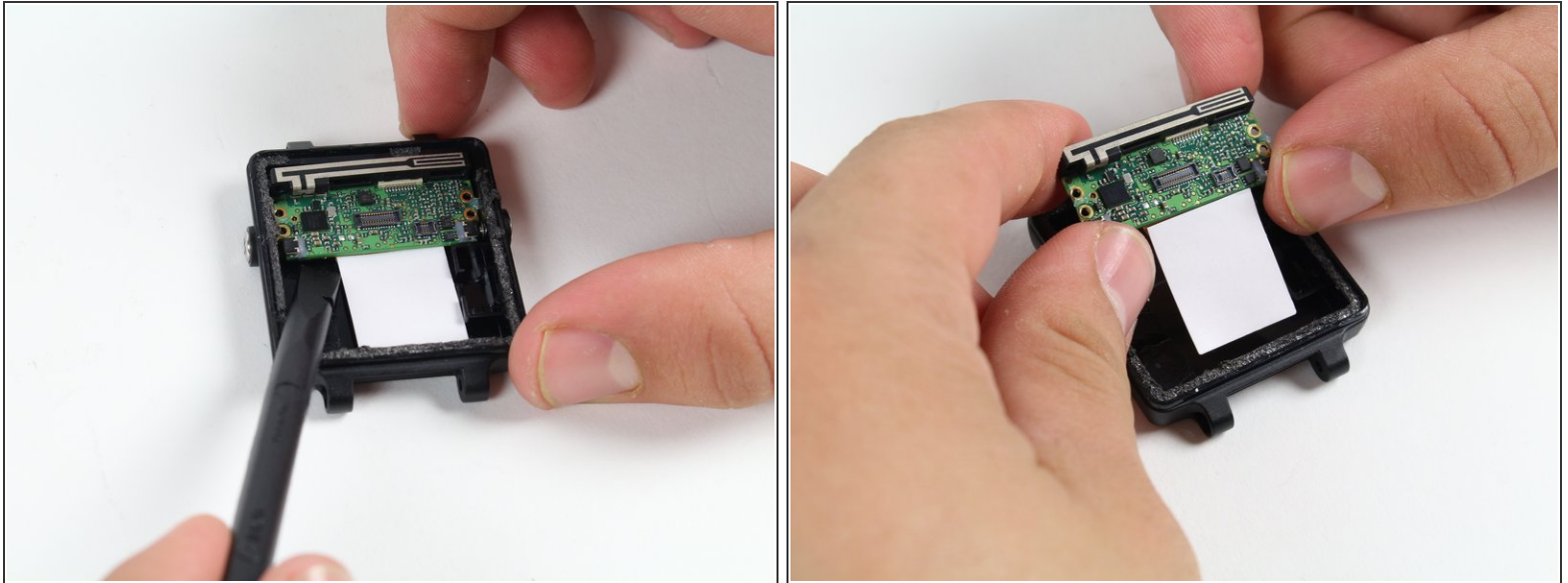
Step 12 — Motherboard



- Remove the four 2.4 mm screws with a PH00 Phillips head screwdriver.

⚠ Make an effort not to damage any nearby components of the motherboard with the screwdriver.

Step 13



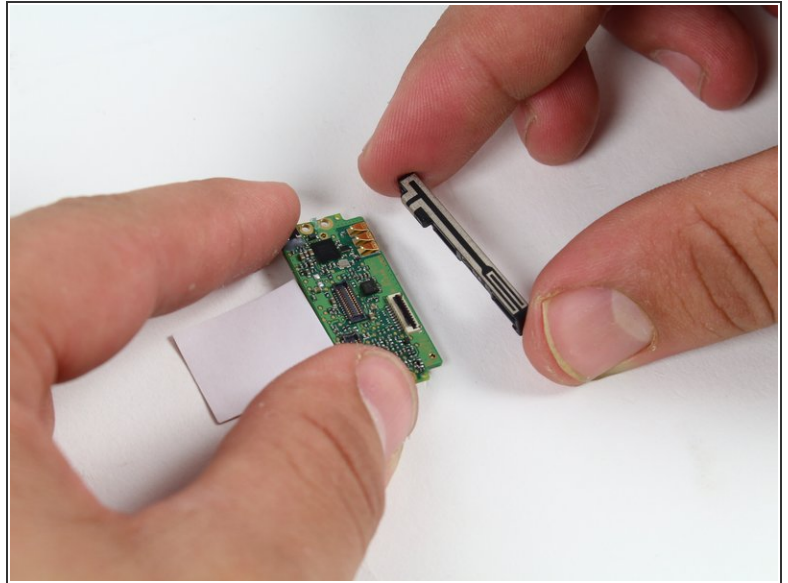
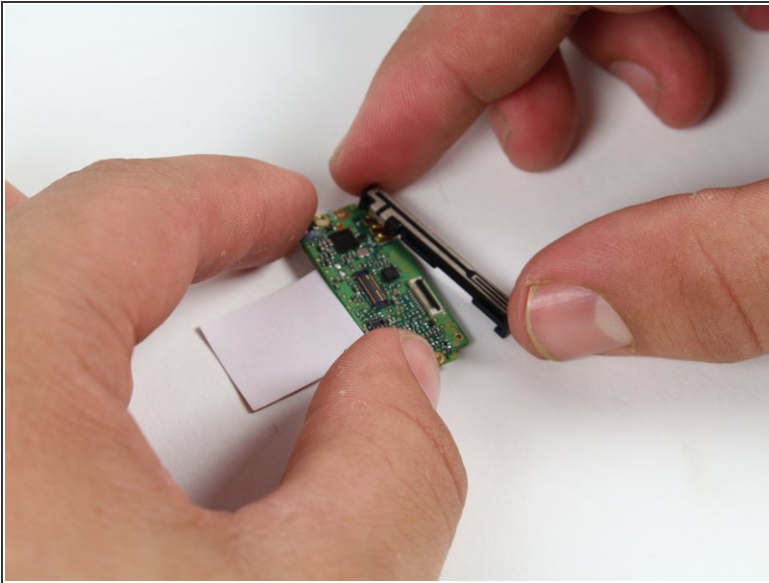
- Use the spudger to pry up the board from the case.

⚠ Insert the spudger a minimum distance beneath the board as there are components below.

- Wiggle the exposed side of the board from each end until it comes free.

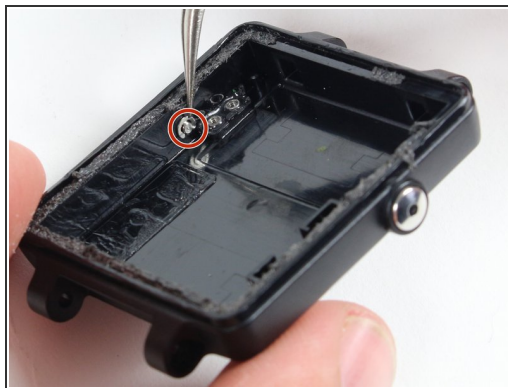
⚠ Use proper [electrostatic discharge](#) safety when removing and handling the board.

Step 14



- Remove the GPS antenna by sliding it away from the board.
- ⓘ Keep track of the antenna and add it to the new board upon replacement.

Step 15 — Side Button



- Orient the crescent shaped retaining clip so the open section faces the bottom of the device.
- Remove the retaining clip by pulling up away from the device with the precision tweezers.

⚠ Be careful, the tweezers are quite sharp!

Step 16



- After the retaining clip is removed, the spring and button will pop out.
- ⓘ With these very small components free from your device, take care not to lose them.
- ⚠ The spring is slightly compressed, so the button may pop out once the clip is removed.

To reassemble your device, follow these instructions in reverse order.