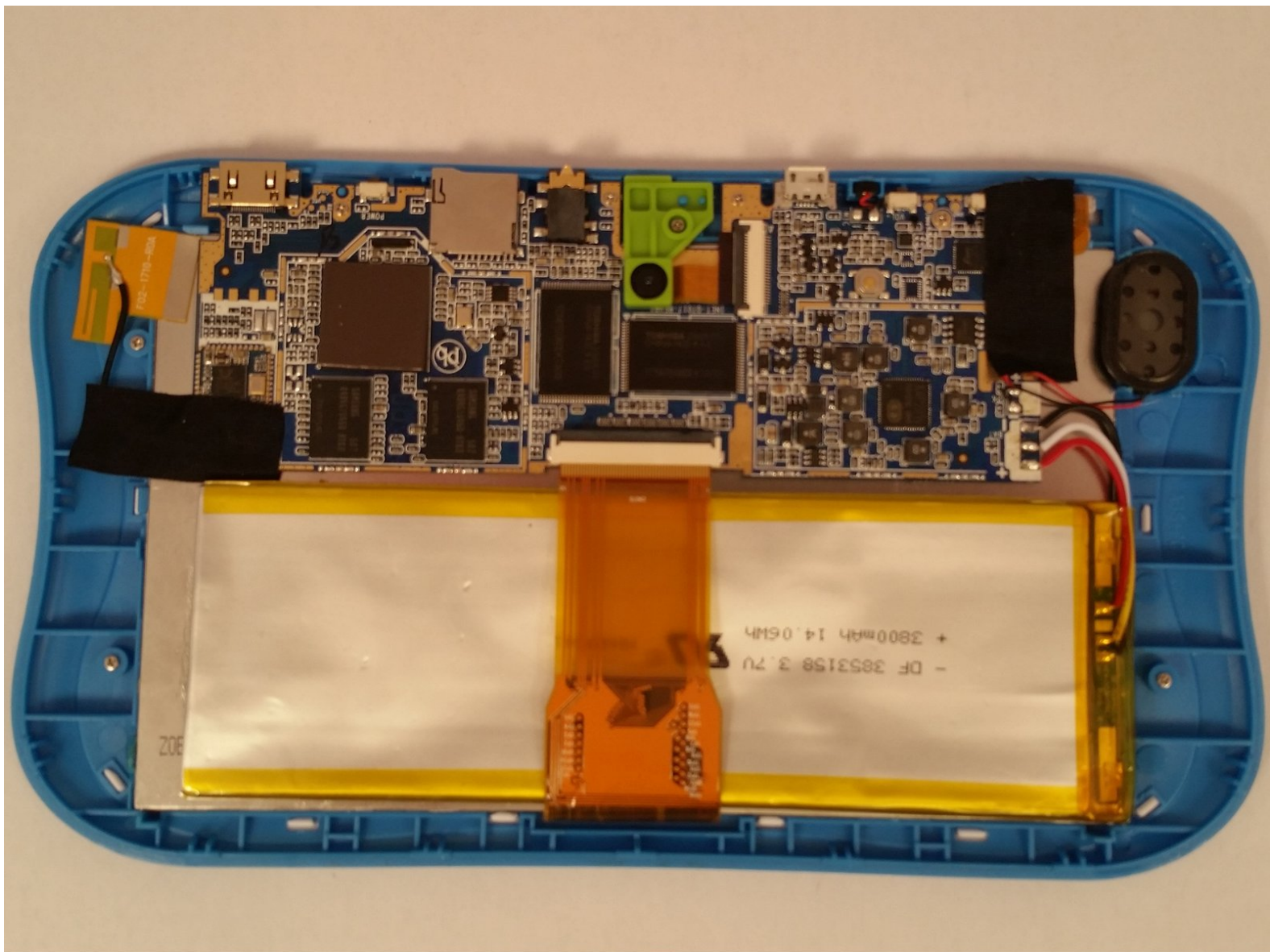




# Sprout Channel Cubby Digitizer Replacement

How to replace the digitizer on a Sprout Channel Cubby.

Written By: David Meyers



---

## INTRODUCTION

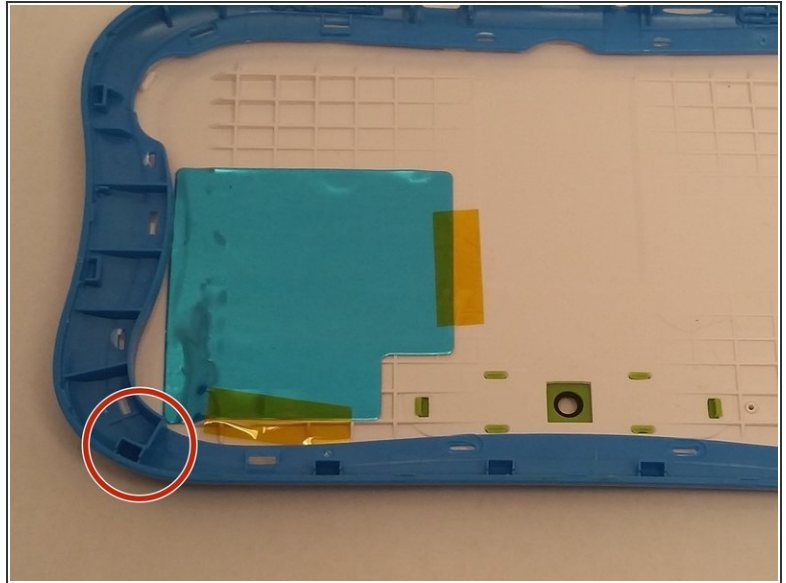
When the screen cracks but keeps displaying video, the digitizer (cover glass) needs replaced. The screen and the digitizer are extremely fragile and should be taken out with extreme care.

---

### TOOLS:

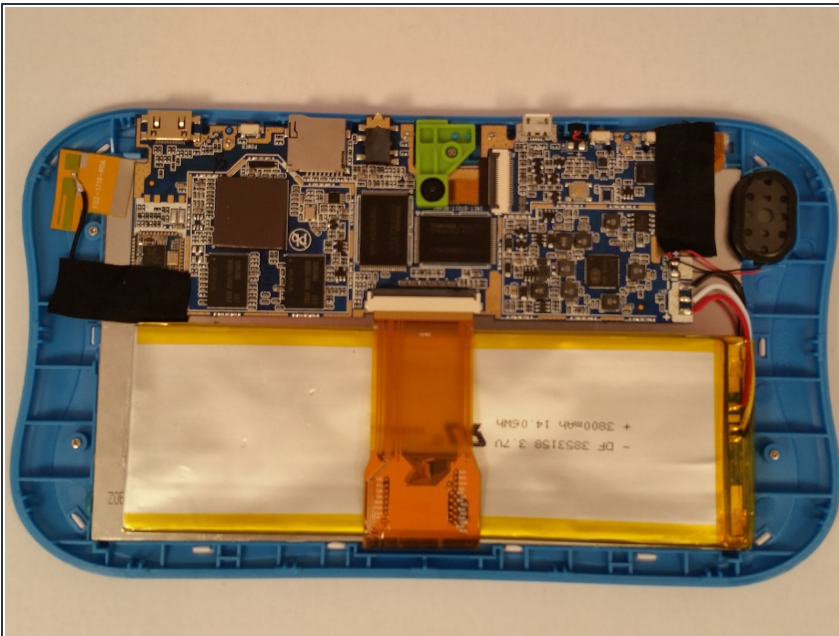
- [iFixit Opening Tools](#) (1)
  - [Spudger](#) (1)
  - [64 Bit Driver Kit](#) (1)
-

## Step 1 — Dissassemble the device



- Use an opening tool to push in and release sixteen small plastic clips around the edge of the case. As the clips are released, gradually pry the case apart.
- ⓘ It is easiest to start on the corners.

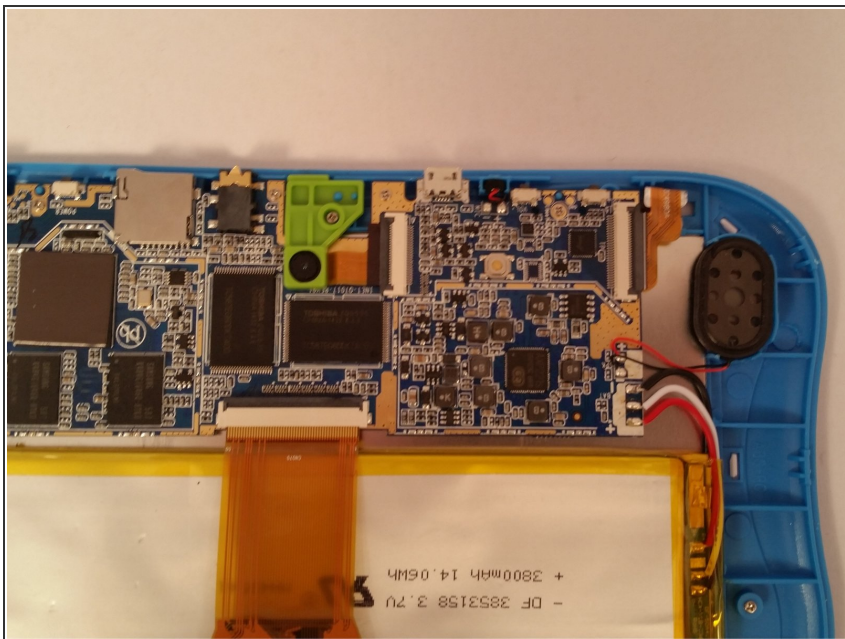
## Step 2 — Digitizer



- Once opened, carefully peel back the black electric tape around the digitizer.

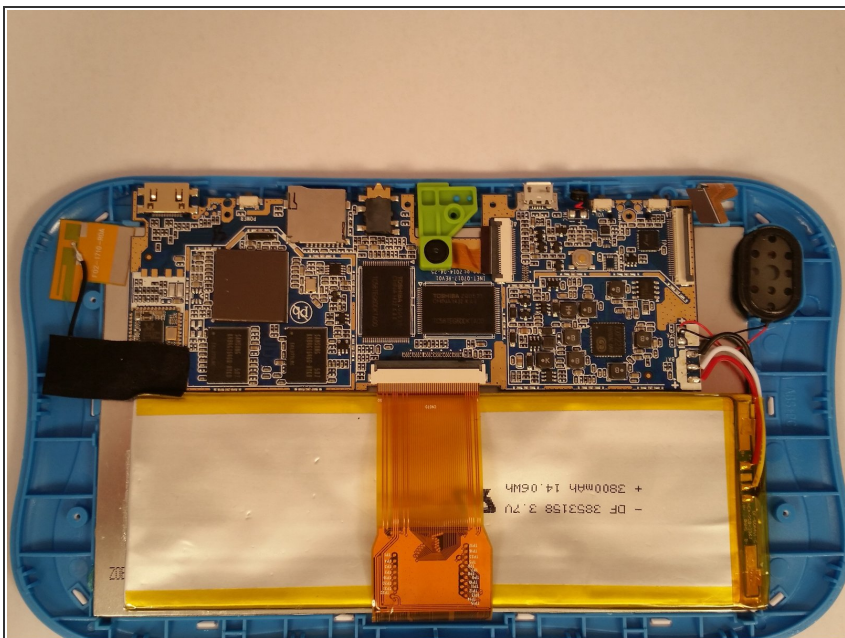


## Step 3



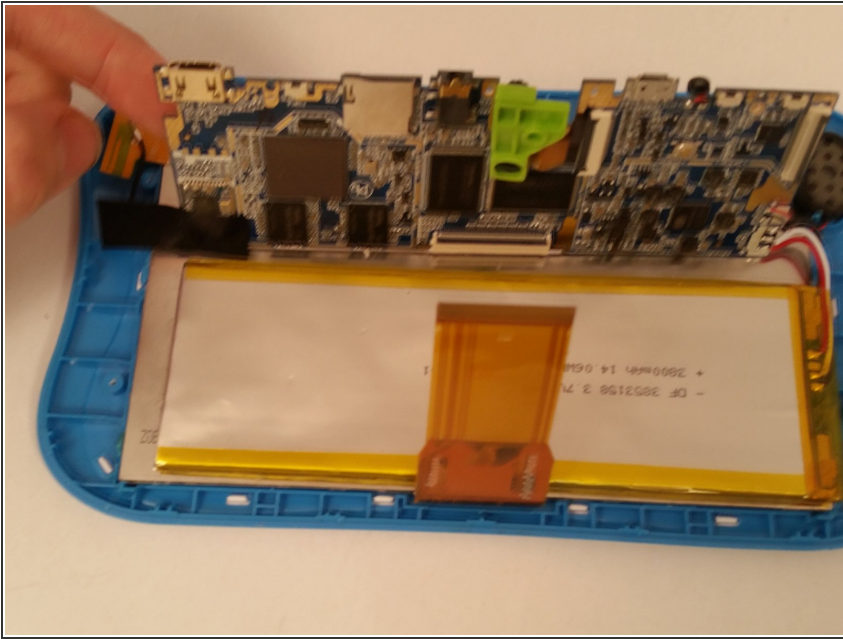
- Unclasp the electrical plastic strip by gently pulling up on the white colored clasp.

## Step 4



- Unscrew the five screws holding down the motherboard.

## Step 5



- Once all five screws are removed, you should be able to lift up the motherboard.

## Step 6




- Remove the four remaining screws.
- ⓘ This can be done with the battery still attached but is easier if it is unattached.

## Step 7



- Remove the metal sheet covering the screen and digitizer.

 Removing the screen is a very fragile process and needs to be done slowly. The nylon spudger is the best tool for this.

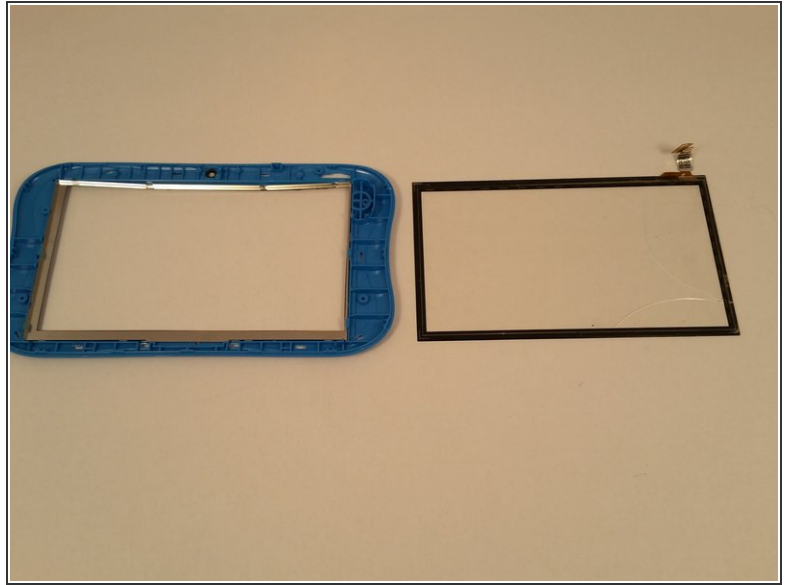
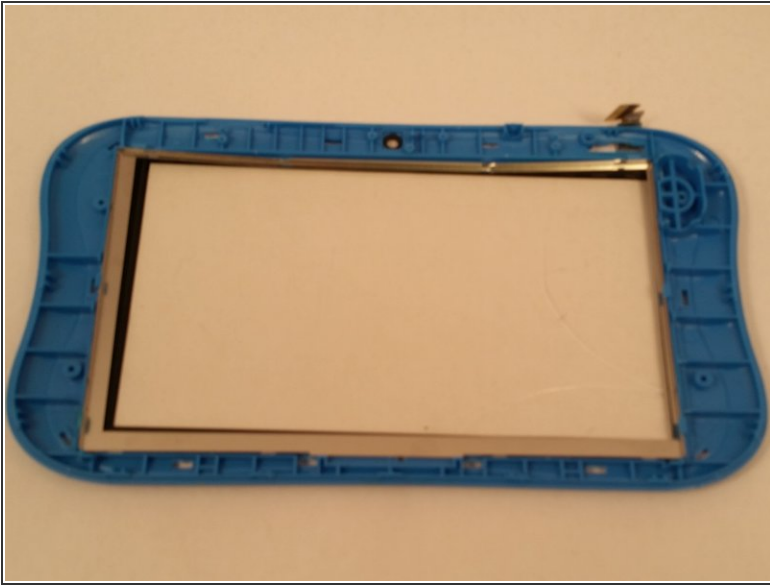
## Step 8



- Remove all of the white pegs located along the perimeter of the plastic. You'll need to remove all of the pegs to remove the white front face.



## Step 9



- To take out the digitizer, remove the connector ribbon from the plastic and then slowly apply pressure to the corner and edges of the digitizer.

To reassemble your device, follow these instructions in reverse order.