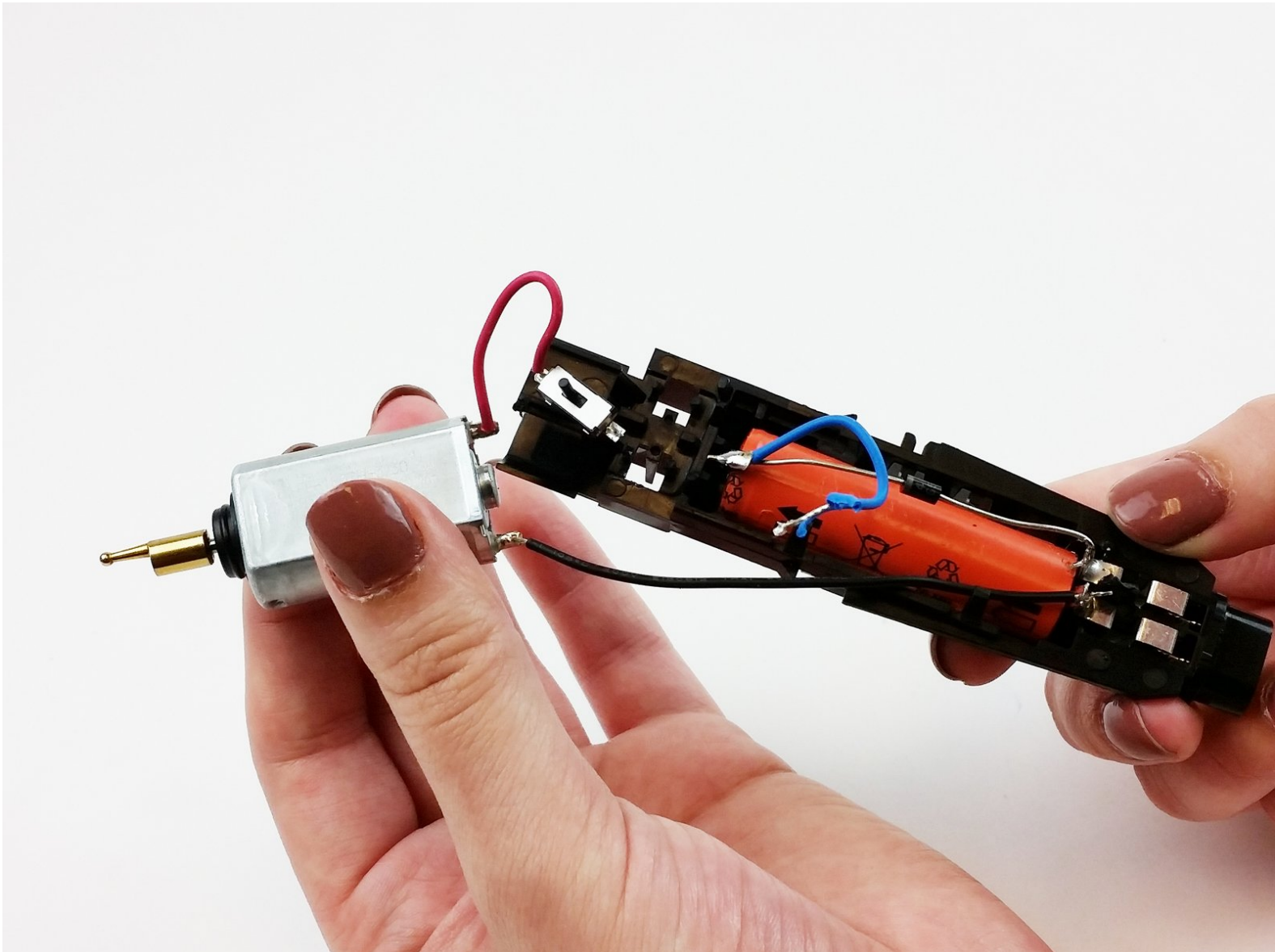




# Philips Norelco MultiGroom 3100 Motor Replacement

Replace the motor located within the device.

Written By: ahaharevolution



---

## INTRODUCTION

This guide will teach you how to replace the motor and will require some soldering.

---



### TOOLS:

- [Soldering Iron](#) (1)
  - [iFixit Opening Tools](#) (1)
  - [Spudger](#) (1)
  - [Tweezers](#) (1)
-

## Step 1 — Power Button



- Remove the comb from the top of the trimmer.

## Step 2



- Grip the attachment and twist it counterclockwise until you hear a click.
- Pull the attachment up to remove it from the trimmer.

## Step 3



- Hold the trimmer upright so it is facing you.
- Insert the plastic opening tool in the gap at the top of the power button.

## Step 4



- Apply pressure to pry off the power button.



## Step 5 — Casing



- Insert the spudger into the bottom of the gray bezel and begin to gently pry it off.

**i** Separate the bezel one clip at a time so that the clips do not break.

## Step 6



- Insert the spudger in the indicated hole and apply a tilting force to loosen the outer casing.
- Pull upward on the top of the inner housing to remove it from the outer casing.

## Step 7 — Motor



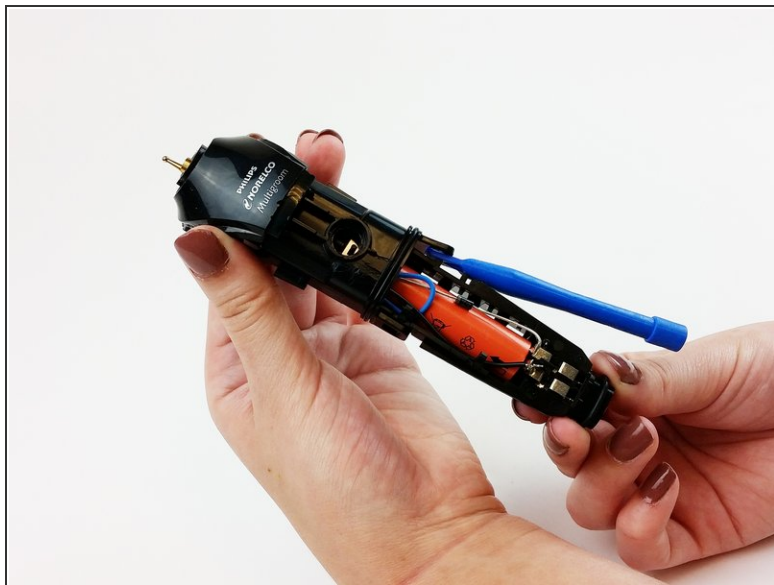
- Use the tweezers to pull out the inner power button.

## Step 8



- Use the plastic opening tool to separate the clip on the right side of the inner housing.

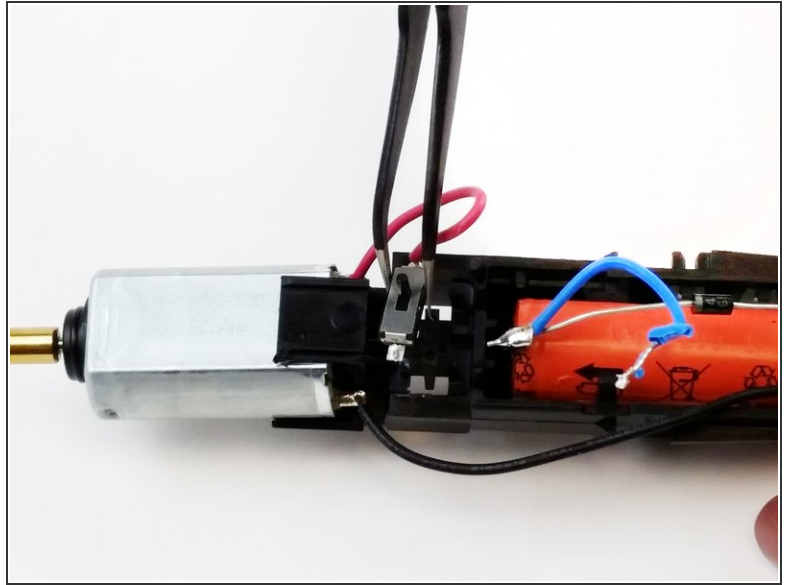
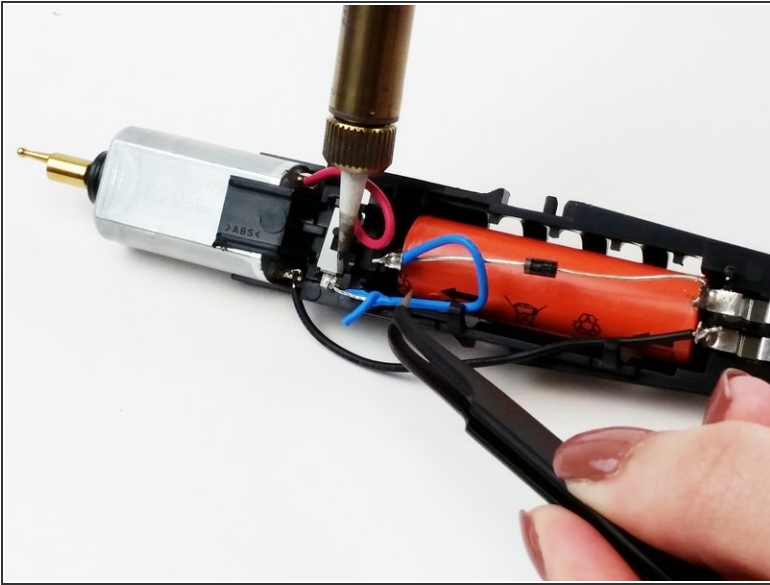
## Step 9




- Push the inner housing up and to the right to separate the left clip from the battery casing.
- Push the inner housing upwards to separate it from the battery casing.

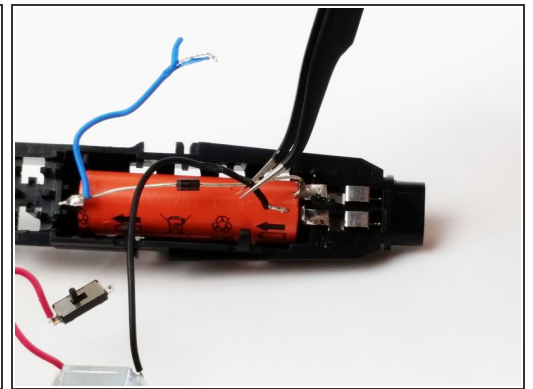
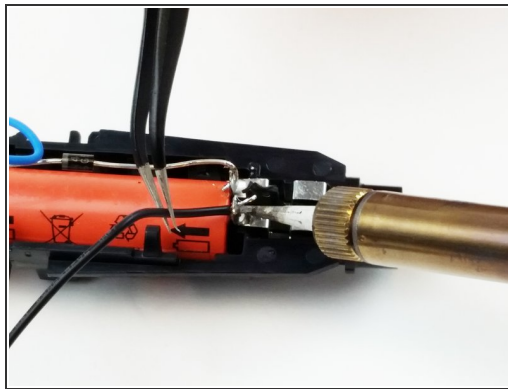
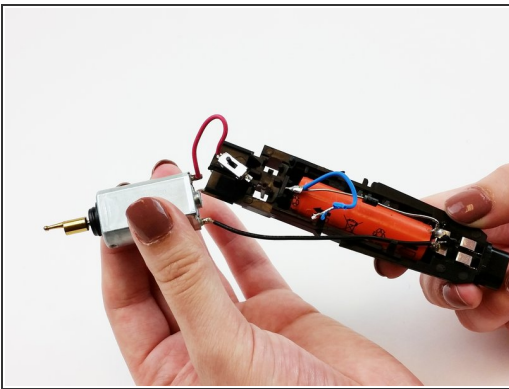


## Step 10



- Use the tweezers to hold the wire steady as you unsolder the blue wire from the power switch.
  - Use the tweezers to remove the power switch.
-  For help with soldering check out the [iFixit Soldering Technique Guide](#).

## Step 11



- Pull up on the motor to remove it from the battery casing.
- Use the tweezers to hold the black wire steady while unsoldering it from the base of the battery.
- Using the tweezers, pull on the black wire to remove it from the base of the battery.



To reassemble your device, follow these instructions in reverse order.