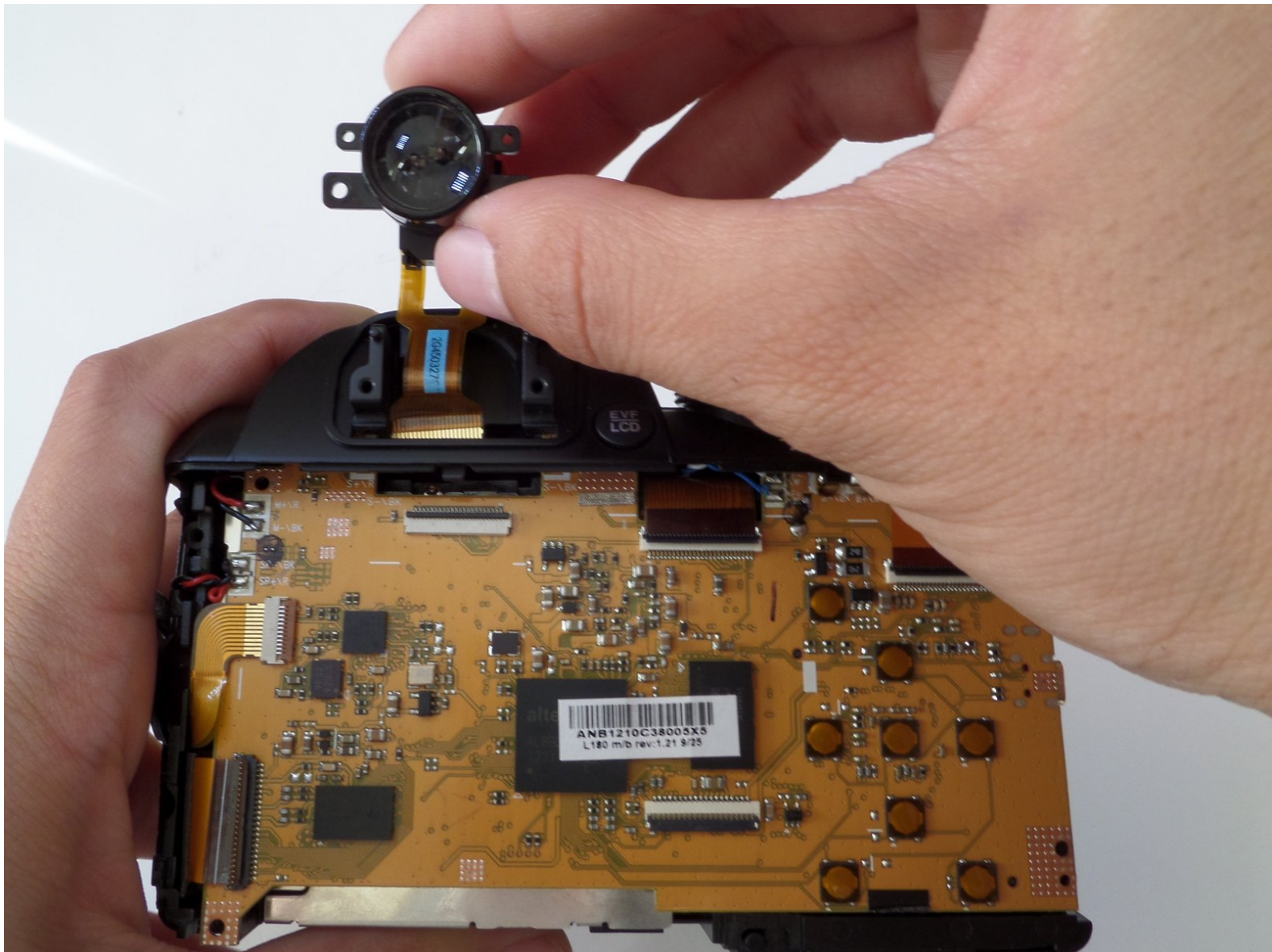




Fujifilm FinePix S4200 Viewfinder Replacement

Replace your viewfinder for focused and composed pictures.

Written By: Melissa Burciaga



INTRODUCTION

To replace the viewfinder you will need to perform the LCD prerequisite. The viewfinder should be replaced if your camera does not focus or your photos lack composition.



TOOLS:

- [Phillips #000 Screwdriver](#) (1)
 - [iFixit Opening Tools](#) (1)
-

Step 1 — LCD Screen



- Turn the camera off.
- Turn the camera upside down so that the battery compartment is showing.

Step 2



- Remove the three 4 mm screws from the bottom of the camera with a Phillips #000 screwdriver.

Step 3



- Rotate camera to the side where the speaker ports are located.
- Remove the three 4 mm screws with a Phillips #000 screwdriver.


Step 4



- Turn the camera to the opposite side where the HDMI port is located.
- Remove all five 4 mm screws with a Phillips #000 screwdriver.

Step 5



 Casing is fragile.

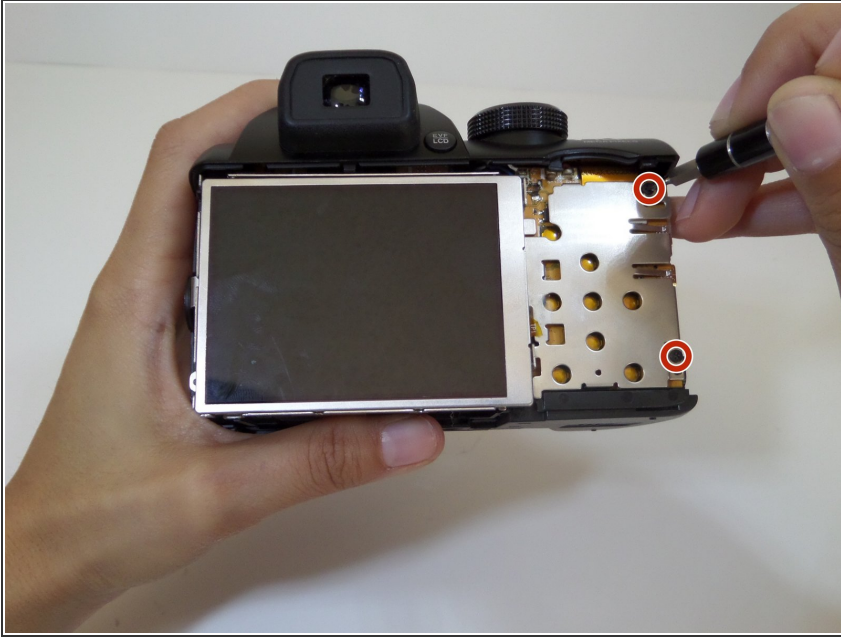
- Utilize the plastic opening tool to pry in between the back casing of the camera from the front casing.
- Continue this motion around the camera to create a wedge between the front and back casing of the camera.

Step 6



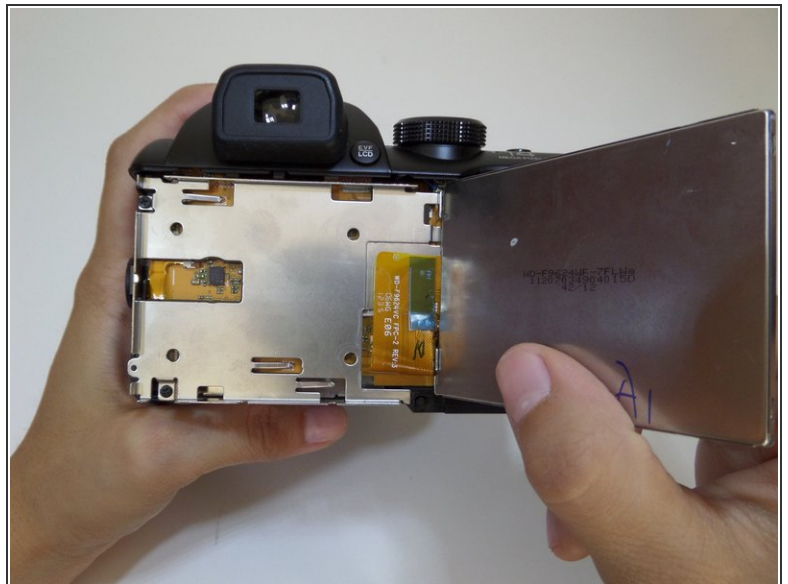
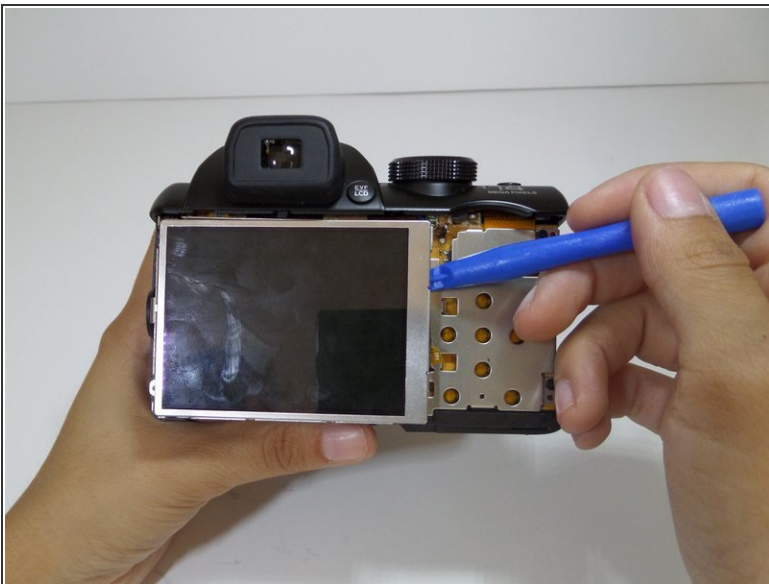
- Use force to pull apart the back casing from the camera.

Step 7



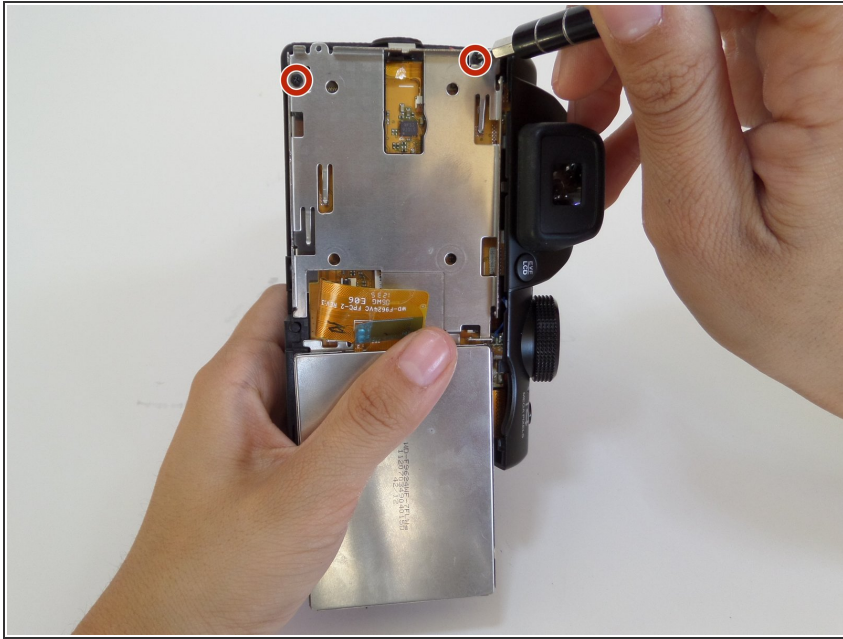
- Remove the two 4 mm screws that hold the motherboard and metal plate in place.

Step 8



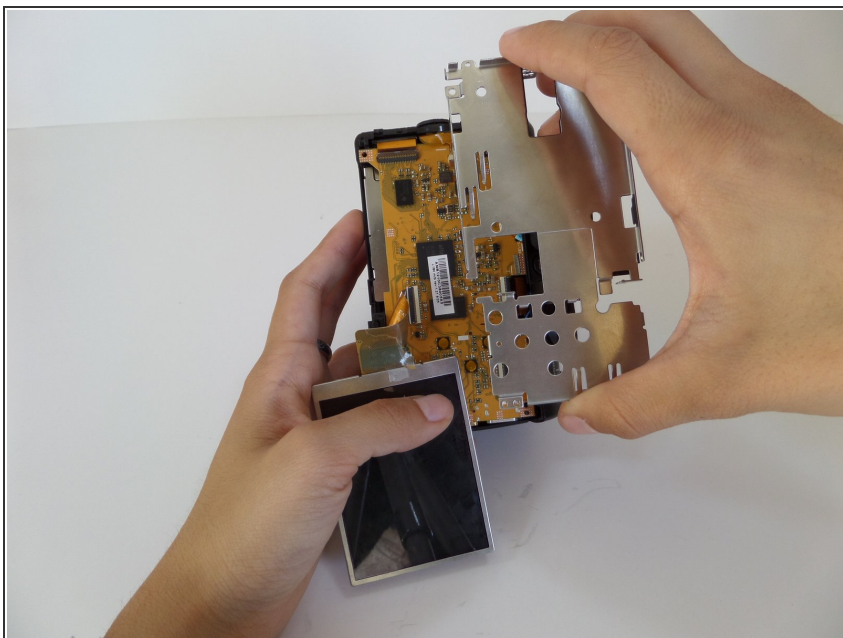
- Utilize the plastic opening tool to gently lift the LCD screen away from the metal plate.
- Flip over LCD screen so that the left side of the metal plate is visible.

Step 9



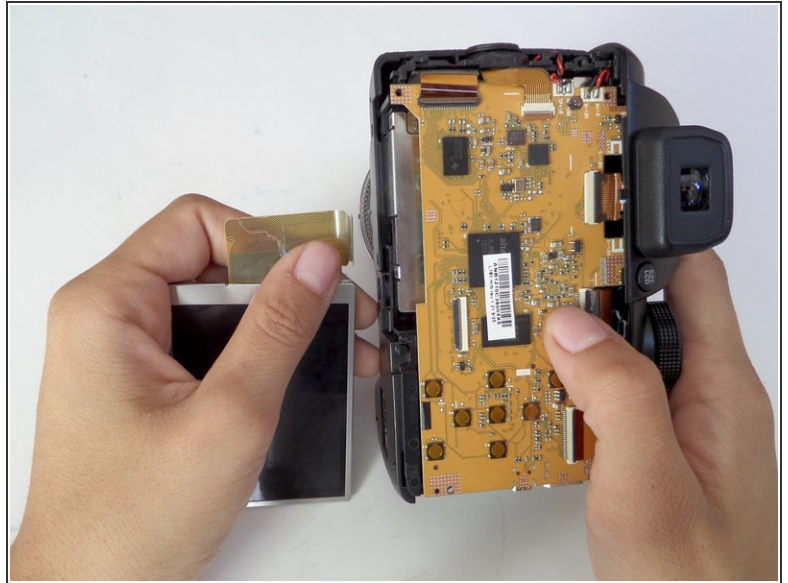
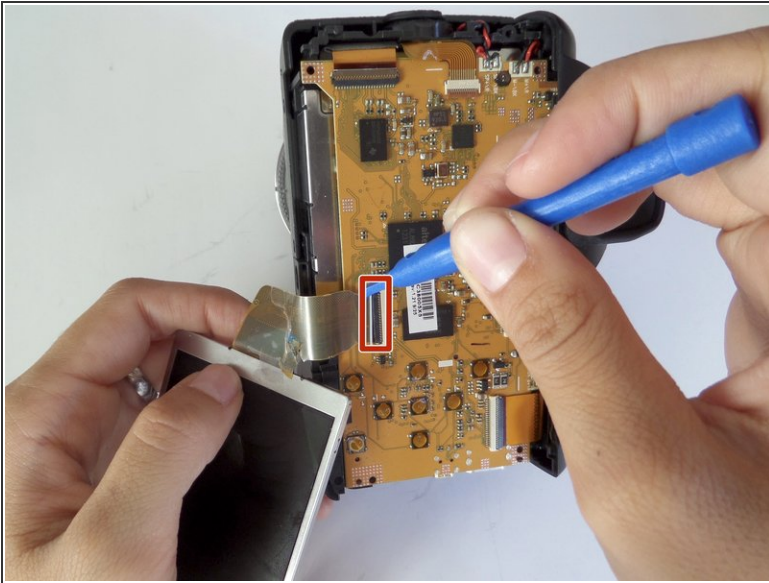
- ❗ Rotate the camera vertically so that it is easier to manage.
- Use a Phillips #000 screwdriver to remove the two 4mm screws that are located on the metal plate under the LCD screen.

Step 10



- Detach the metal plate from the motherboard.

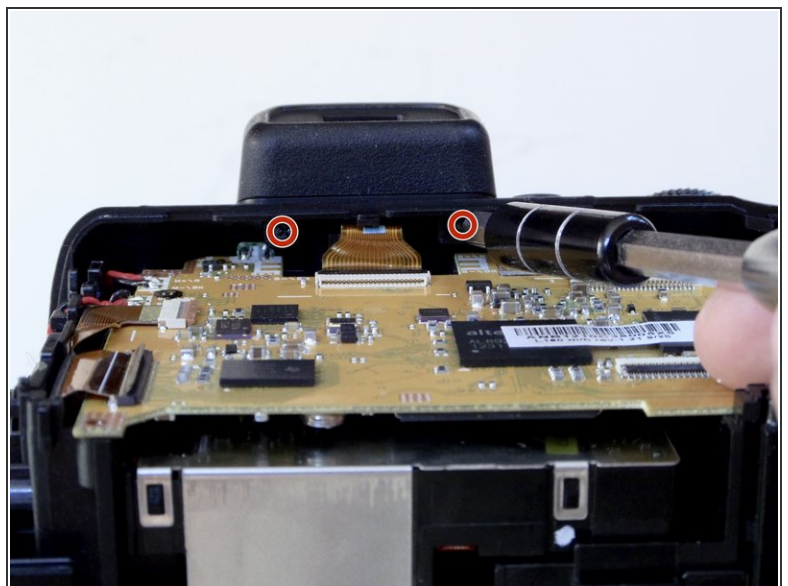
Step 11



⚠ The orange ribbon cable is fragile.

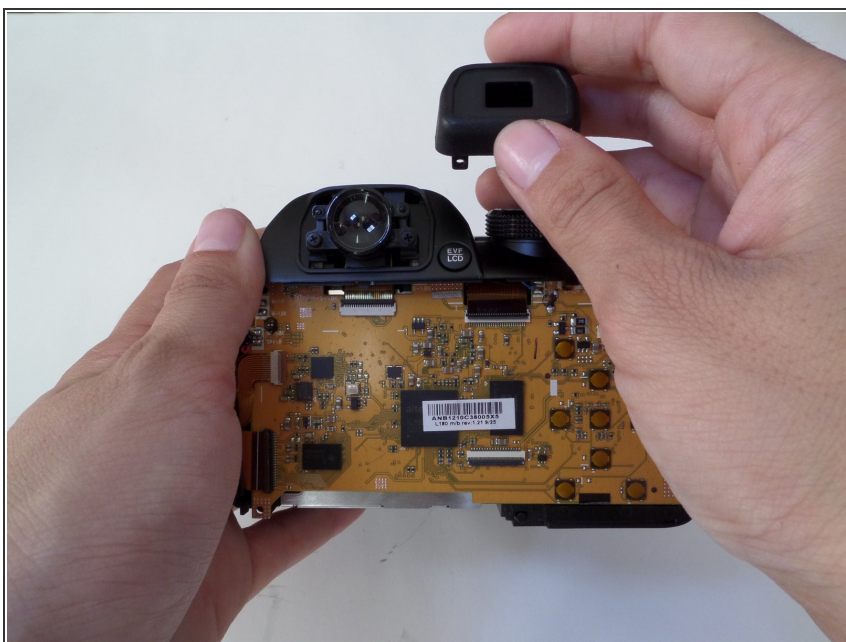
- Pull back the small black latch connecting the orange ribbon cable to the motherboard.
- Gently remove the LCD screen from the motherboard.

Step 12 — Viewfinder



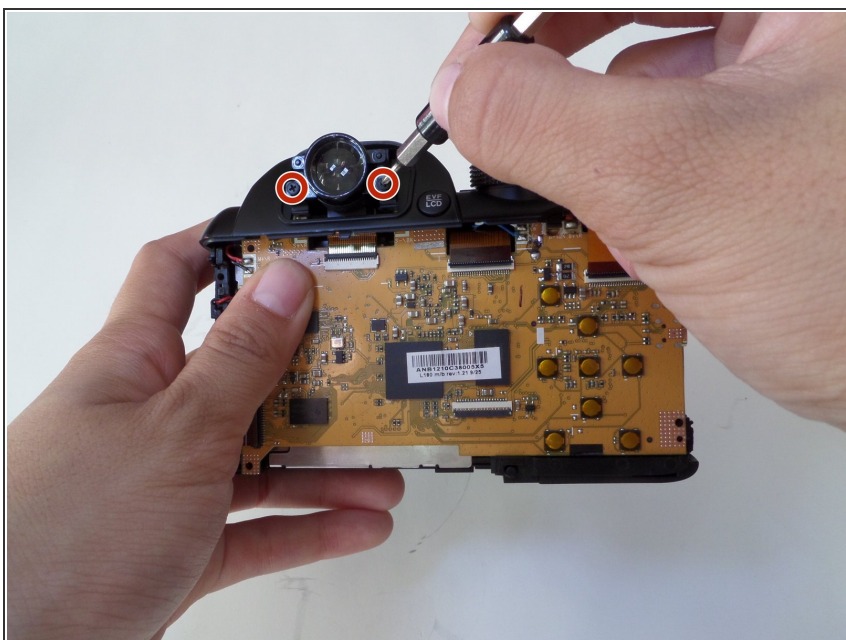
- Remove the two 4 mm screws with a Phillips 000 screwdriver under the viewfinder.

Step 13



- Carefully pull off the plastic cover from the view finder.

Step 14



- Remove the two 3mm screws surrounding the viewfinder with a Phillips 000 screwdriver.

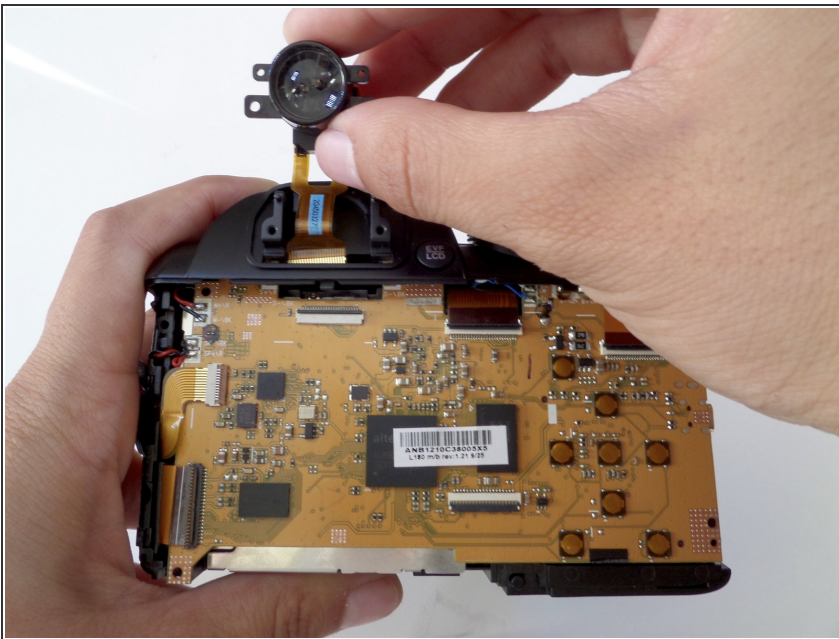
Step 15



 Orange ribbon is fragile.

- Using the plastic opening tool, pull down the small black latch to remove the orange ribbon from the mother board.

Step 16



- Pull the viewfinder up to remove it from the body of the camera

To reassemble your device, follow these instructions in reverse order.