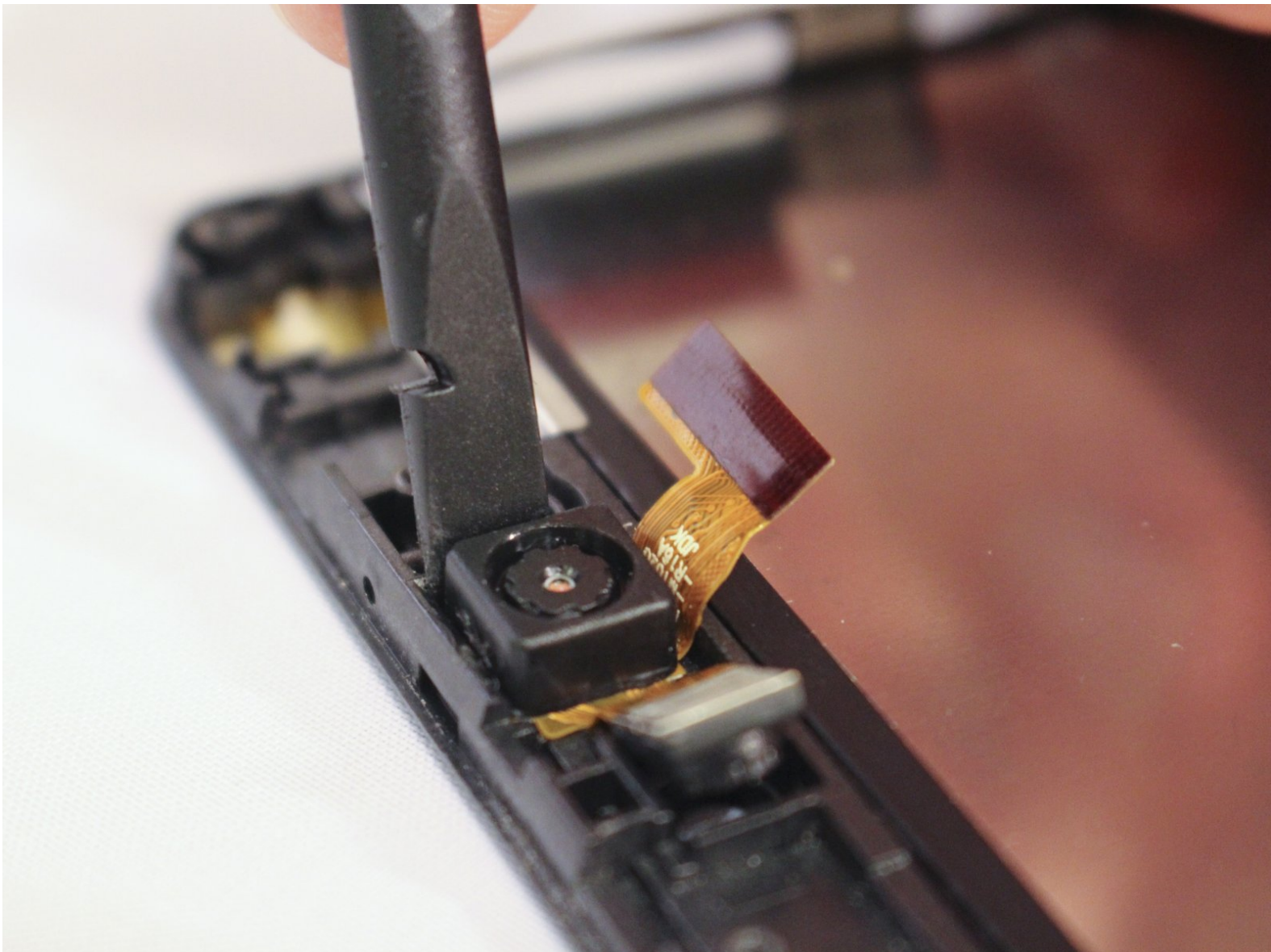




# Insignia Flex 7 Camera Assembly Replacement

This guide outlines the removal and replacement of the Insignia Flex 7's camera assembly.

Written By: Rose



## INTRODUCTION

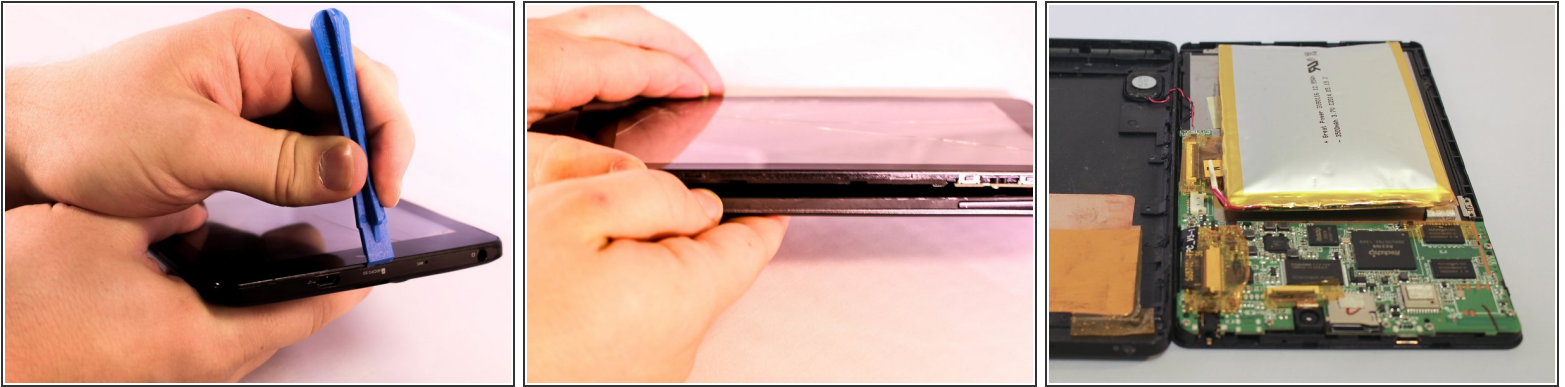
If your device is not taking picture-perfect photos or even worse still no photos at all, it may be necessary to replace the camera assembly of the tablet. The Flex 7 has both an Internal and an External camera. Both of these components are permanently connected and are therefore manufactured as a single part - the camera assembly. Removal of this camera assembly will require replacement of the motherboard first, since the internal camera is buried under the motherboard.

---

### TOOLS:

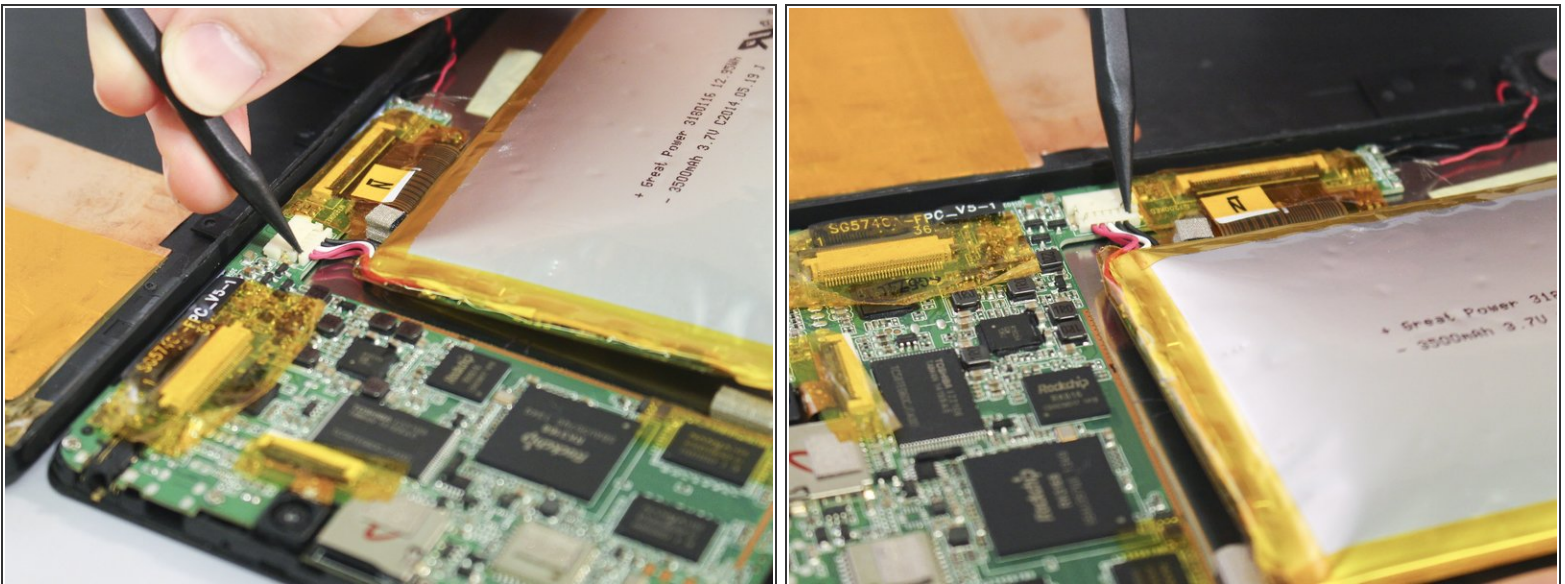
- [iFixit Opening Tools](#) (1)
  - [Spudger](#) (1)
  - [Metal Spudger](#) (1)
  - [Phillips #000 Screwdriver](#) (1)
-

## Step 1 — Battery



- Insert the edge of the plastic opener into the groove between the screen and back cover around the perimeter of the device.
- Then using a gentle prying motion, create a gap large enough to use your fingers to separate the two halves.

## Step 2



- Place the tip of the spudger on each side of the battery's electrical connector.
- Then using a gentle match-striking motion, loosen both sides of the battery's electrical connector.

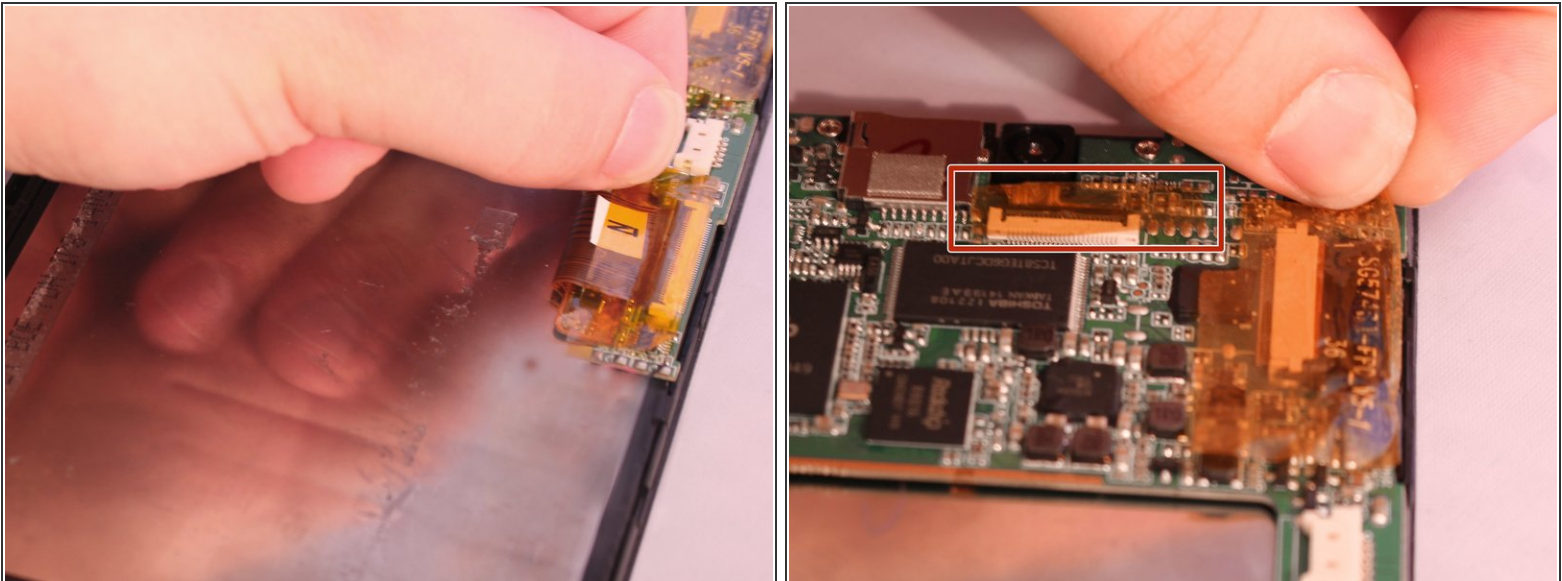


## Step 3



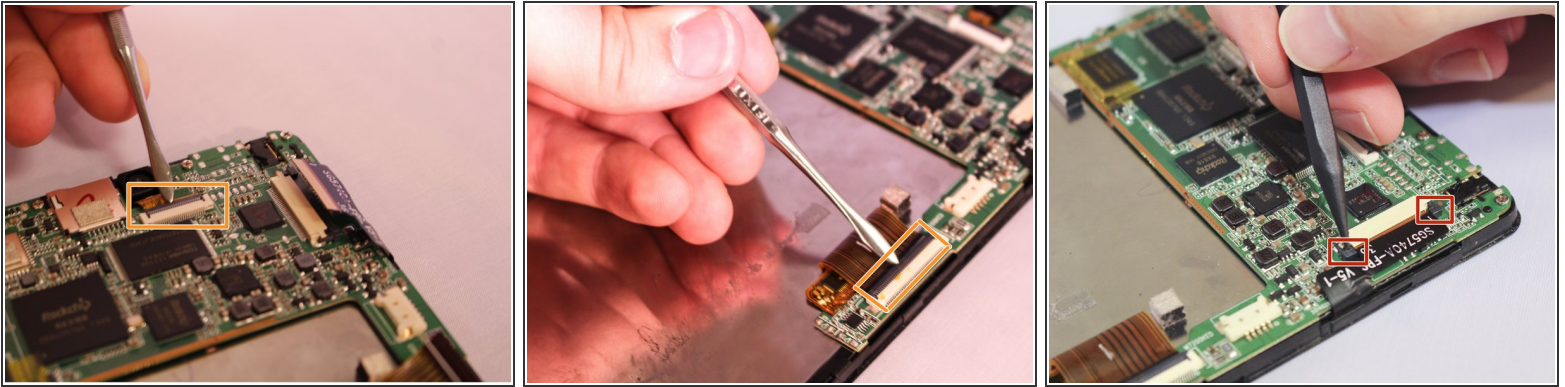
- Insert the flat end of the spudger under one side of the battery.
- Then using a gentle prying and sliding motion, separate the battery from the case. There are two lengthwise strips of glue holding it down.
- Repeat the process for the other side of the battery.

## Step 4 — Motherboard



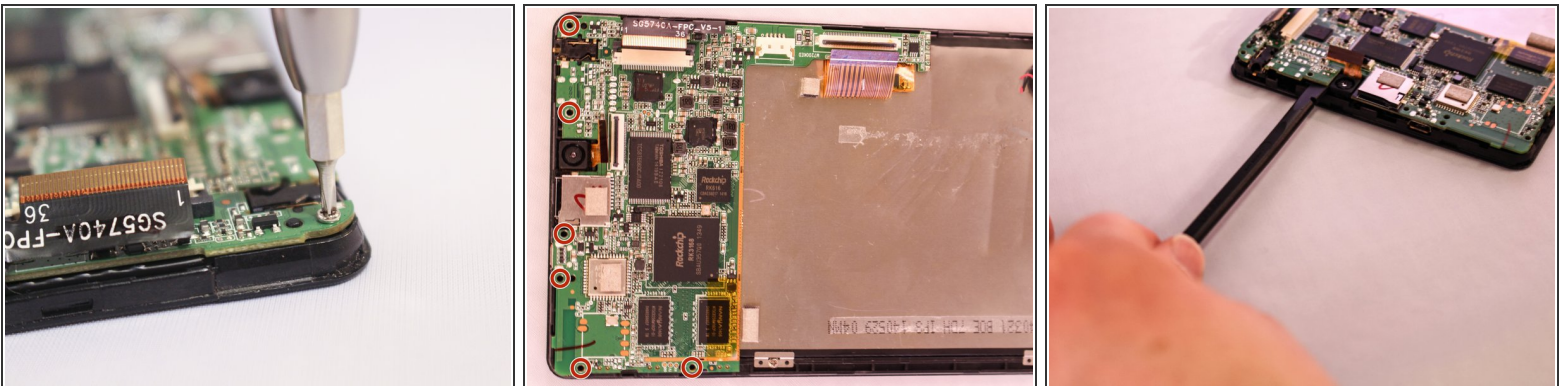
- Locate the three ribbon cables connecting components to the motherboard. The connections are covered with orange shielding tape. Peel the tape off the connectors and reserve for reassembly.

## Step 5



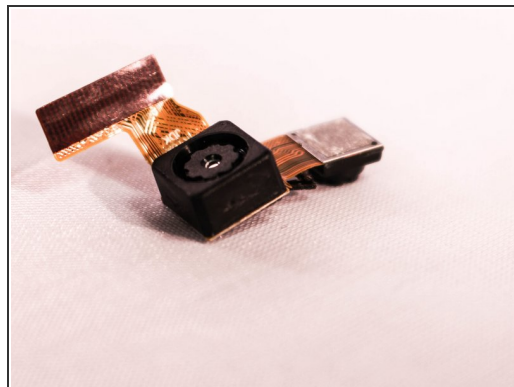
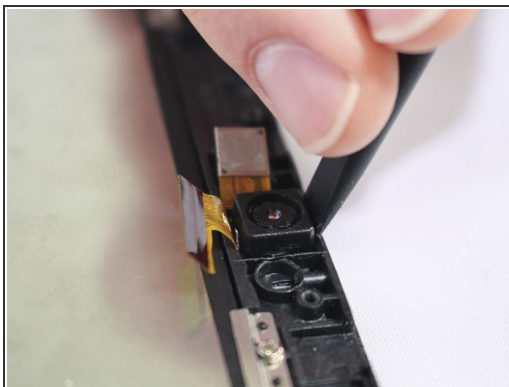
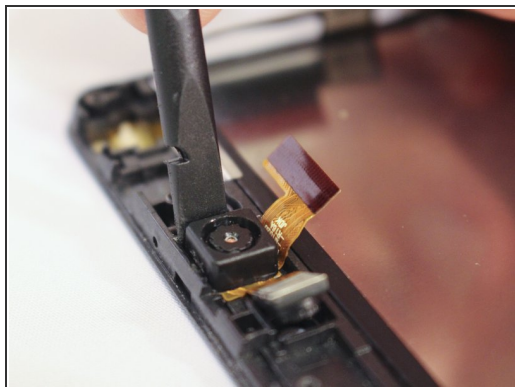
- Each Zero Insertion Force or ZIF connector has a latch which holds the ribbon cable in place. The camera cable (a) and the LCD display cable (b) have a latch that lifts as shown in the illustration. Use a spudger to gently lift the latch to release the cable.
- The touchscreen cable (c) has a sliding latch on each side of the connector. Use a spudger to carefully slide the latch on each side as shown to release the cable.

## Step 6



- Using a Phillips #000 screwdriver, unscrew the six 4.8mm screws holding the motherboard to the case.
- Using the spudger lift the motherboard from the case.

## Step 7 — Camera Assembly



- Insert the flat end of the spudger into the groove between the external camera and the tablet's plastic case. Then, applying a gentle prying motion on both sides of the camera, loosen the glue holding down the external camera to separate it from the plastic case.

To reassemble your device, follow these instructions in reverse order.