



# Garmin Nuvi 50LM Power Button Replacement

If the power button is missing or defective, consider this guide to replace the power button.

Written By: Maurice Thomas



---

## INTRODUCTION

There are times when the power button might fall off the device. If that happens, refer to this guide in order to replace it.

---



### TOOLS:

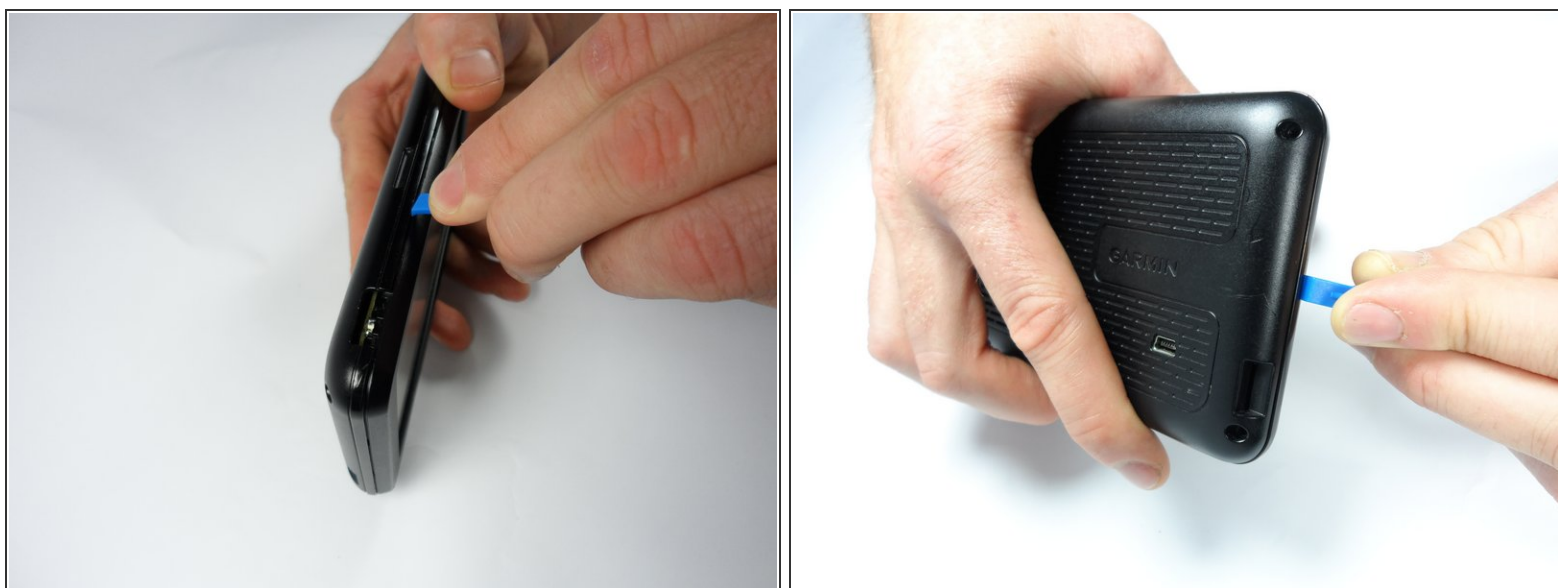
- [iFixit Opening Tools](#) (1)
  - [T4 Torx Screwdriver](#) (1)
-

## Step 1 — Power Button Replacement



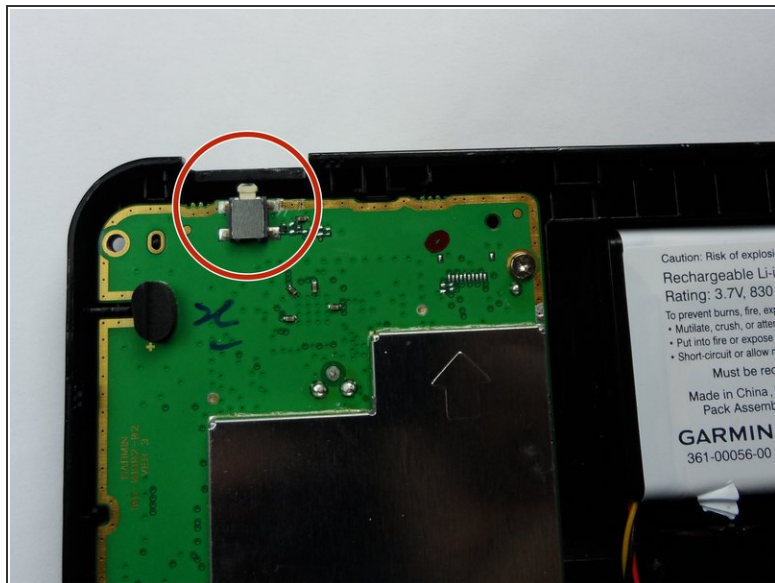
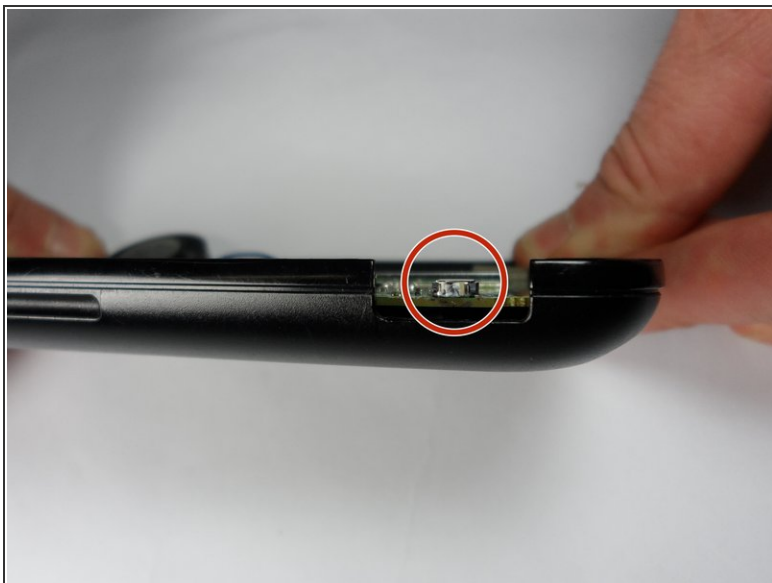
- Use the T-4 screwdriver to unscrew the 9 mm screws on the back of the device.

## Step 2



- Pry open the device from all four sides using the iFixit Plastic Opening Tool until you see the inside of the system.

## Step 3



- Look for a small button on the motherboard at the top of the device, and insert replacement power button on top of the small button on the motherboard until you hear a click.

To reassemble your device, follow these instructions in reverse order.