



Garmin Nuvi 50LM Charging Port Replacement

If the charging port is defective, consider this guide to replace the motherboard to fix the charging port.

Written By: Maurice Thomas



INTRODUCTION

The motherboard is the lowest replaceable unit, so users cannot simply replace the charging port. Garmin permanently attached the charging port to the motherboard. If a user needs to replace the charging port, the user must replace the motherboard.

TOOLS:

- [iFixit Opening Tools](#) (1)
 - [T4 Torx Screwdriver](#) (1)
 - [Soldering Iron](#) (1)
-

Step 1 — Charging Port Replacement



- Place the device on a flat surface with the LCD touchscreen face down.

Step 2



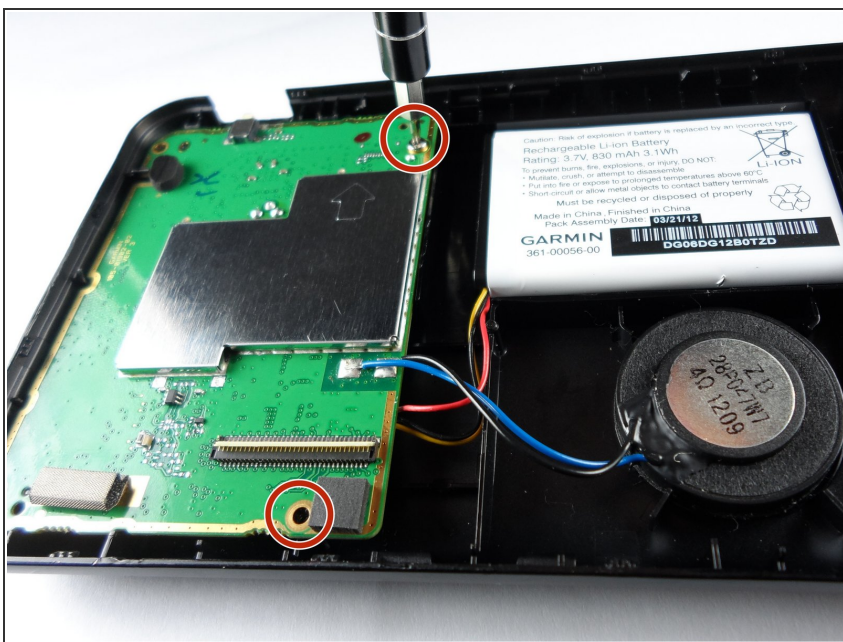
- Remove the four 9 mm screws on the back of the GPS with the Torx T-4 screwdriver set.

Step 3



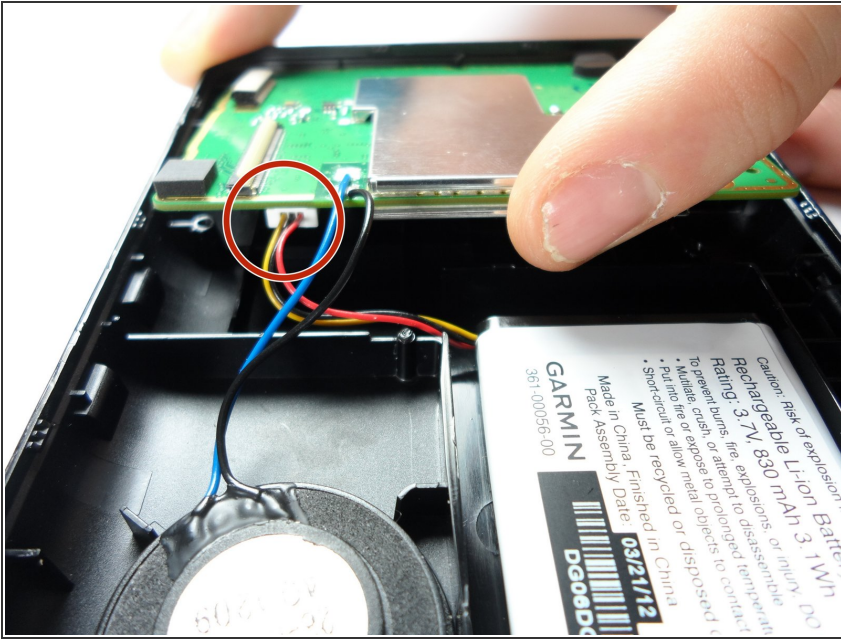
- Use the iFixit Plastic Opening Tool to separate the front cover and the rear cover on all four sides.
- ⓘ Be careful not to damage the orange ribbon cable while opening the device.

Step 4



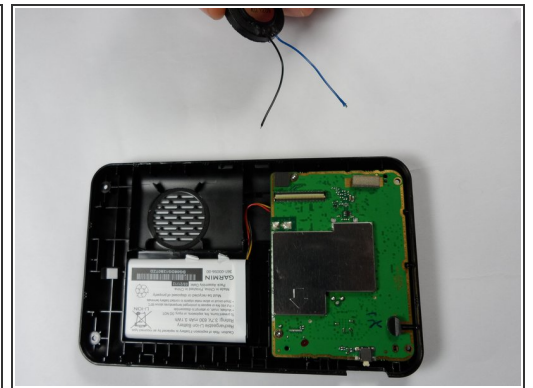
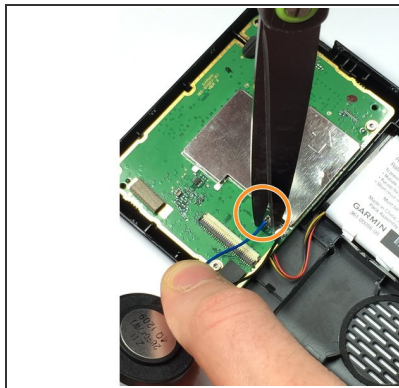
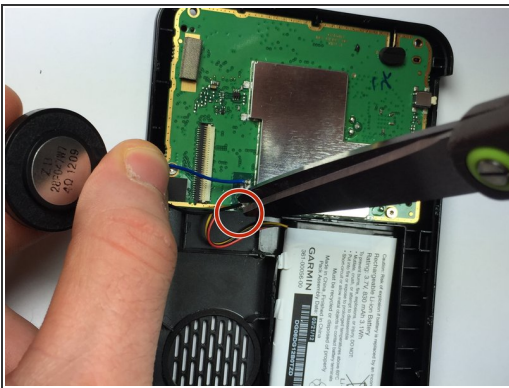
- Remove the two 0.5 cm screws using the T4 Torx screwdriver attaching the motherboard to rear cover of the GPS unit.

Step 5



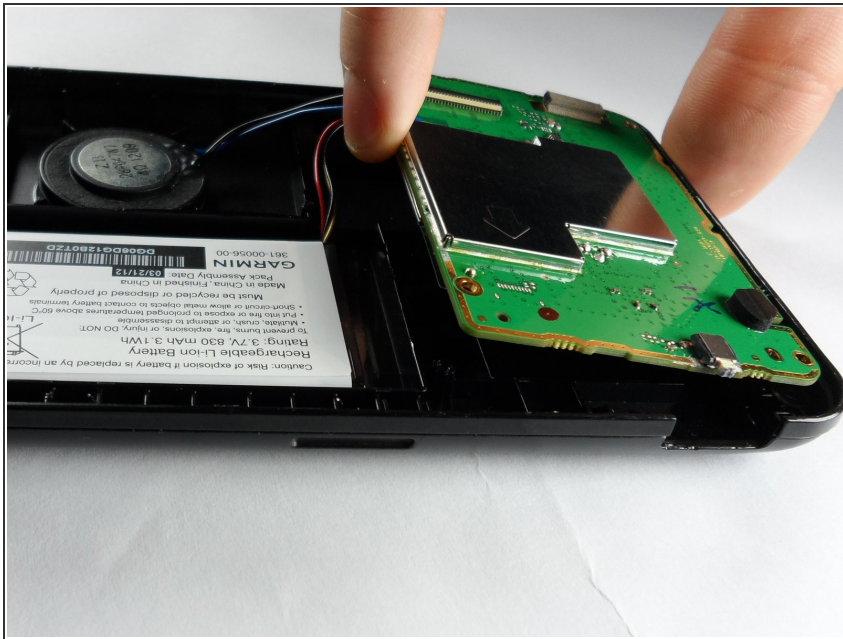
- Unplug the battery from the motherboard.

Step 6



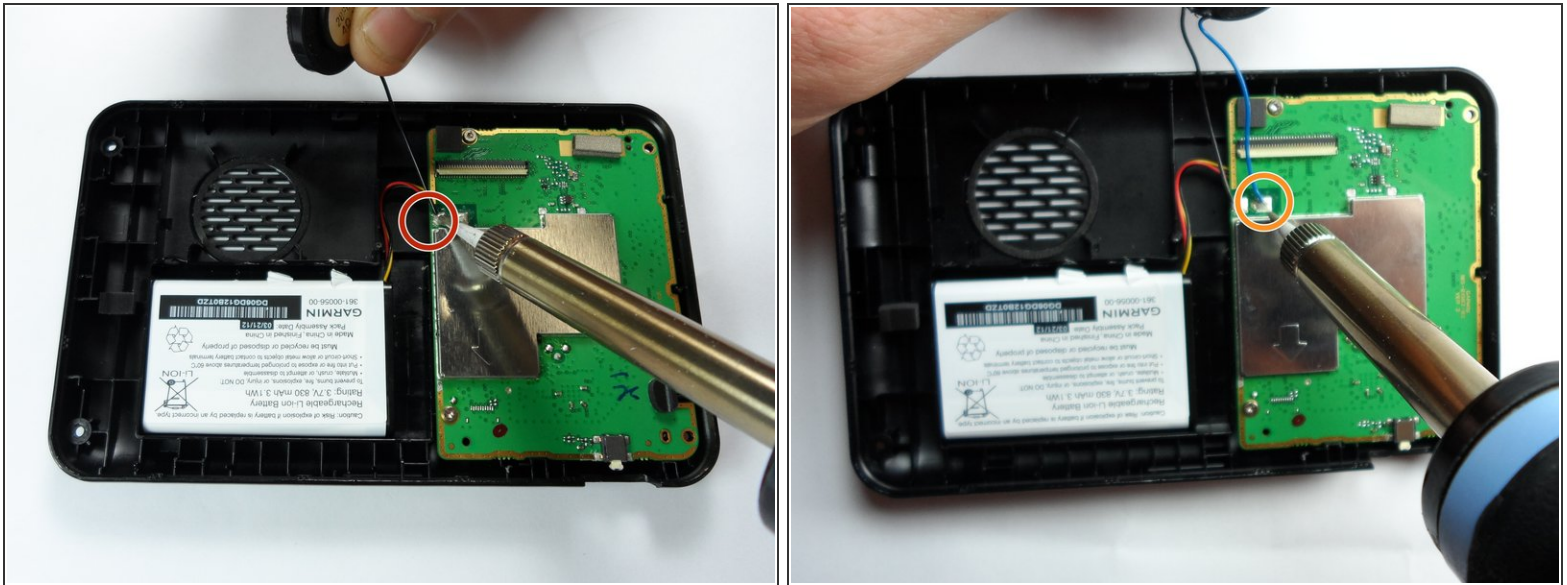
- Use a pair of wire cutters to cut and separate the black speaker wire from the motherboard.
- Use a pair of wire cutters to cut and separate the blue speaker wire from the motherboard.
- ⓘ To reattach the new speaker, you must use a soldering iron to solder the speaker cables to the motherboard.

Step 7



- Use your fingers to remove the motherboard from the rear case of the system.

Step 8



- Place the replacement motherboard in the navigation system, and solder the speaker cables on the replacement motherboard.
- Solder the black wire to the motherboard.
- Solder the blue wire to the motherboard.
- ⚠ The soldering iron is extremely hot, so use prudence when working with the soldering iron.
- ⓘ The black speaker wire is the wire closest to the battery.

To reassemble your device, follow these instructions in reverse order with the exception of cutting the blue and black speaker wires.