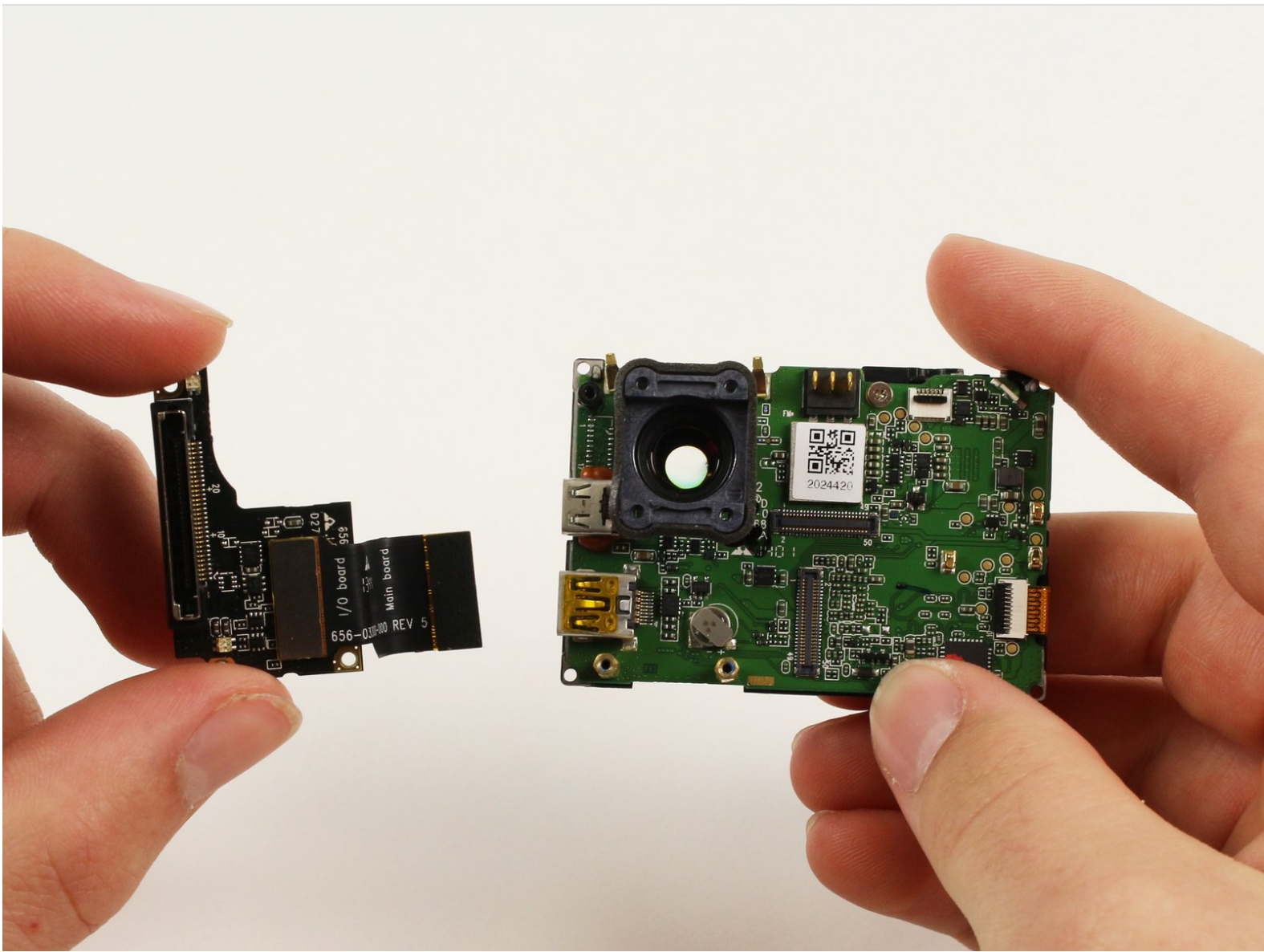




GoPro Hero 3+ Silver Edition microSD/Expansion Port Assembly Replacement

This guide provides instructions for the replacement of the microSD and expansion port assembly in the GoPro Hero3+ Silver Edition.

Written By: Blake Ehlers



INTRODUCTION

If your GoPro seems to have trouble saving videos and pictures, chances are that it is time for a new microSD and expansion port assembly to be installed in your GoPro.



TOOLS:

- [Phillips #00 Screwdriver](#) (1)
- [iFixit Opening Tools](#) (1)



PARTS:

- [GoPro Hero3 Plus Silver Front Panel](#) (1)
- [GoPro Hero3 Plus Silver Image Sensor](#) (1)
- [GoPro Hero3 Plus Silver Expansion Port](#) (1)

Step 1 — Battery



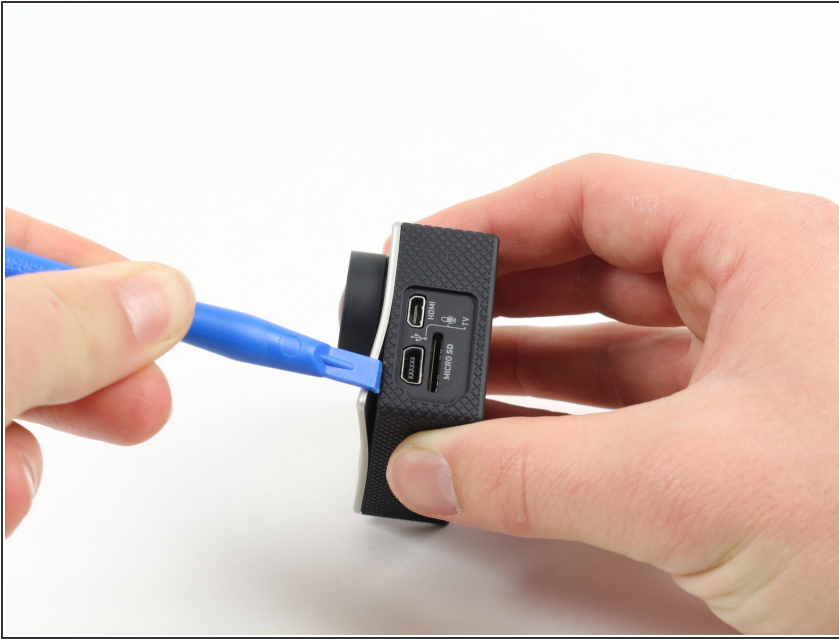
- Push the tab on the back of the device left to remove the plate covering the battery.

Step 2



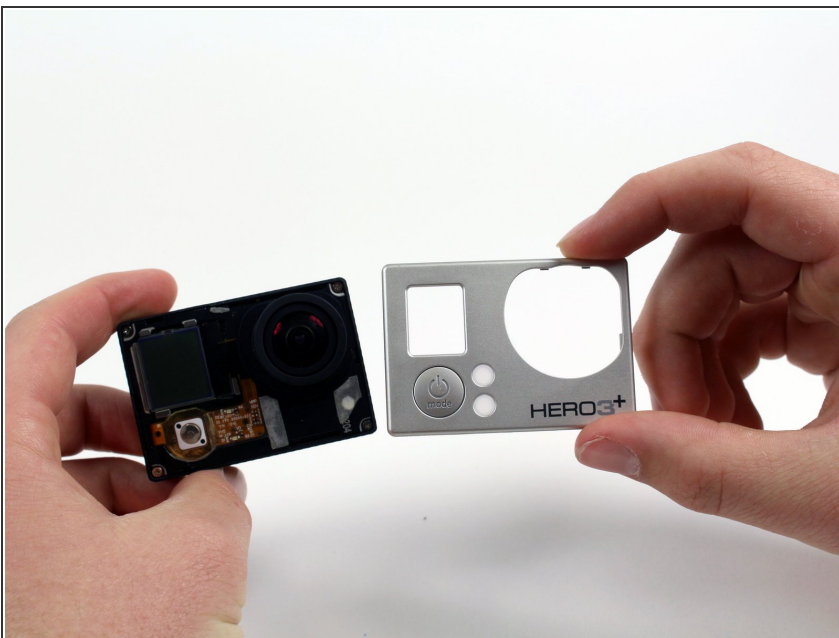
- Use the strip of tape on the battery to remove the battery from the housing.

Step 3 — Front Panel



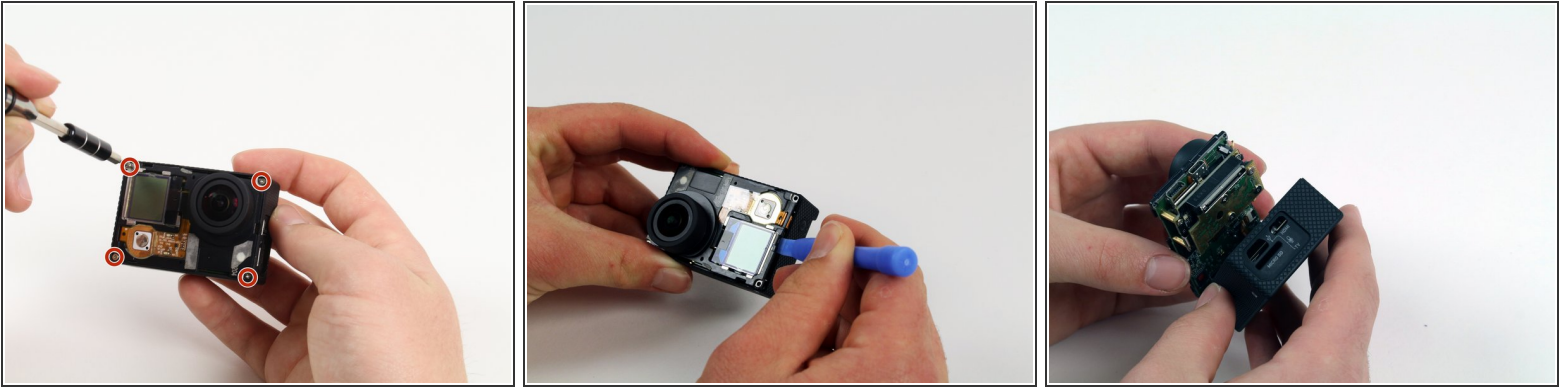
- Insert a plastic opening tool in between the front face plate and the black housing.
- ⓘ Make sure you insert the plastic opening tool next to the microSD card slot. There is a small gap that will help separate the face plate.

Step 4



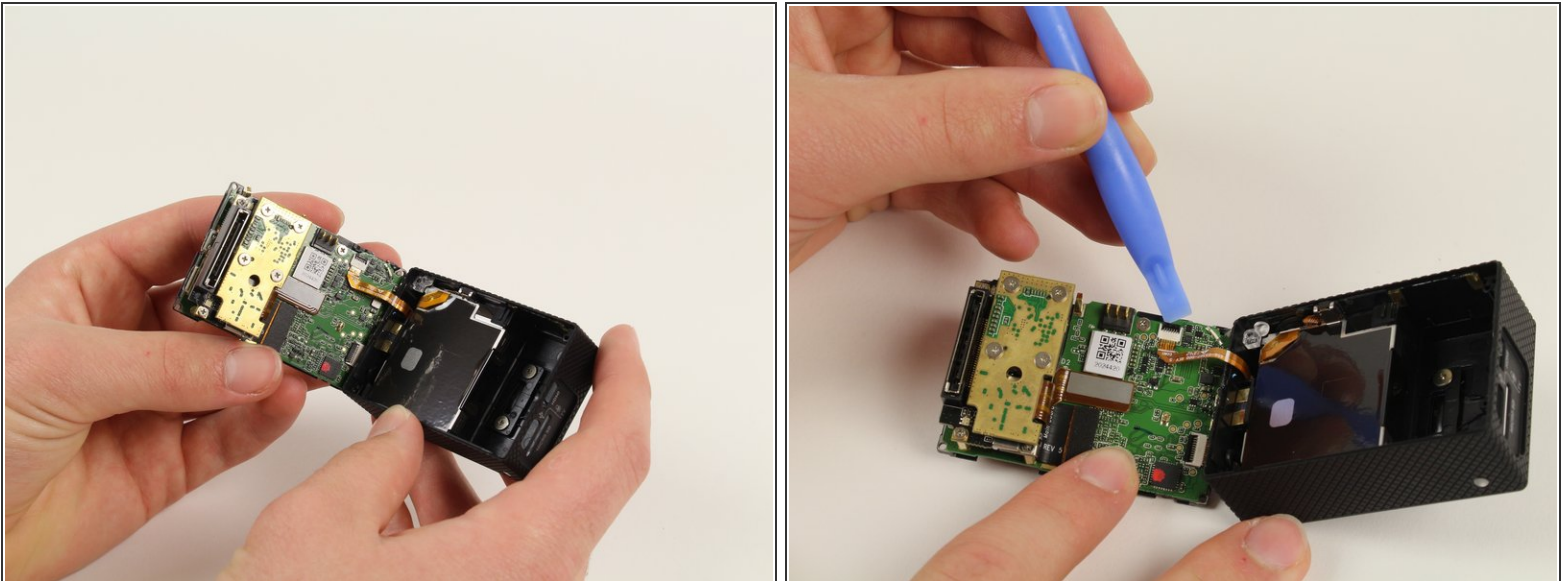
- Continue to use the plastic opening tool and separate the front face plate from the rest of the device.
- ⓘ There is adhesive that helps attach the front face plate. Some extra prying may be required to separate the face plate, but do not use excessive force.

Step 5 — Image Sensor



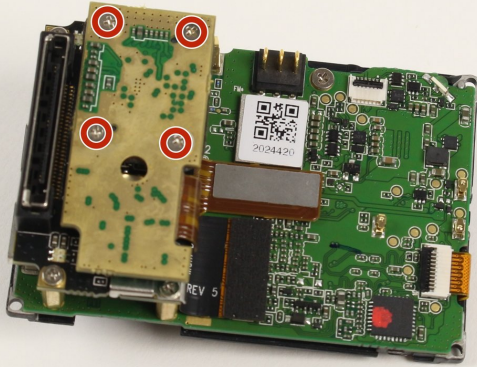
- Locate the four 8.1mm PH00 screws on the corners of the GoPro and unscrew them using the phillips screwdriver.
 - Gently remove the motherboard by using a plastic opening tool to pry it out of the housing.
- ⚠ Be careful not to damage the ribbon cable connected to the GoPro housing and motherboard.

Step 6



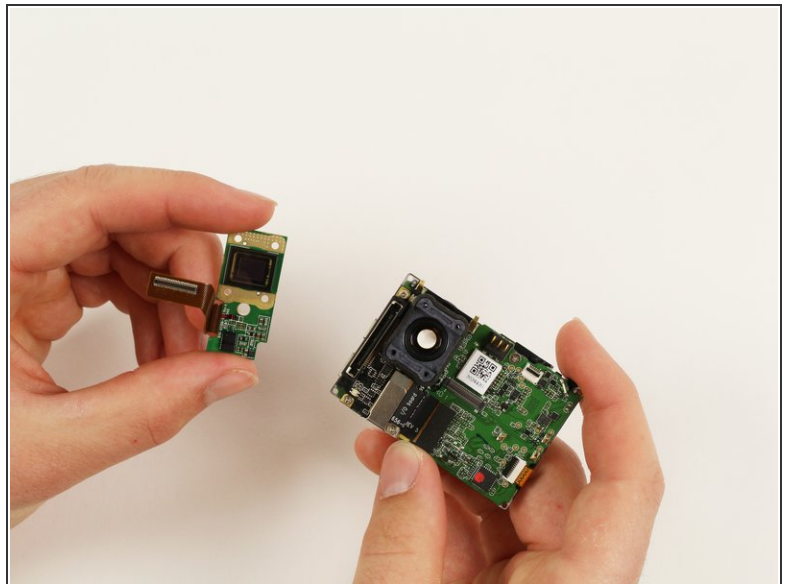
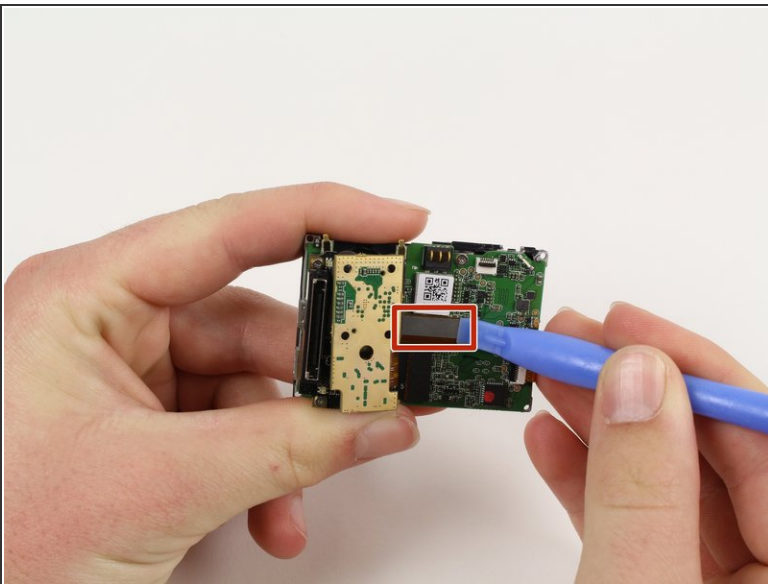
- Remove the ribbon cable by carefully flipping the black clip up with the plastic opening tool and pulling the cable out.

Step 7



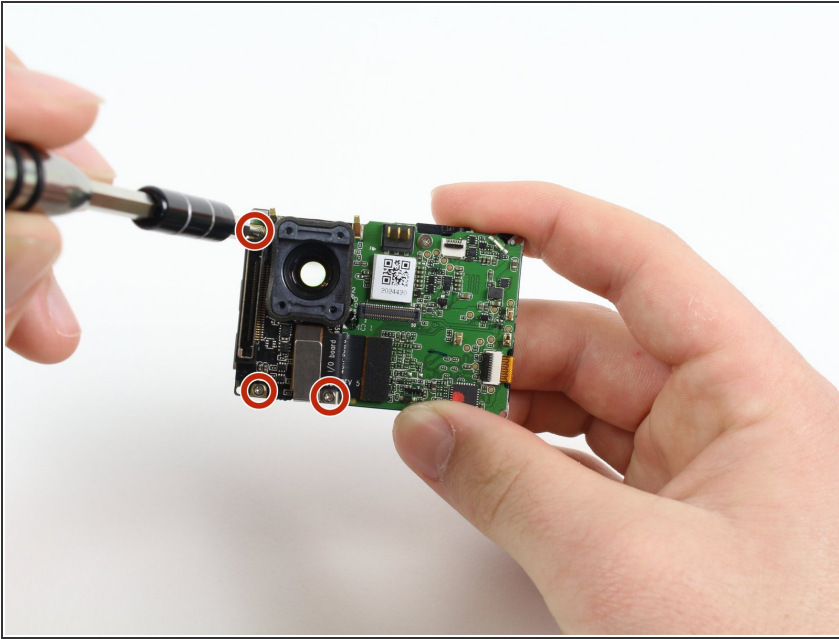
- Remove the four 4mm PH00 screws attaching the image sensor to the motherboard with your screwdriver.

Step 8



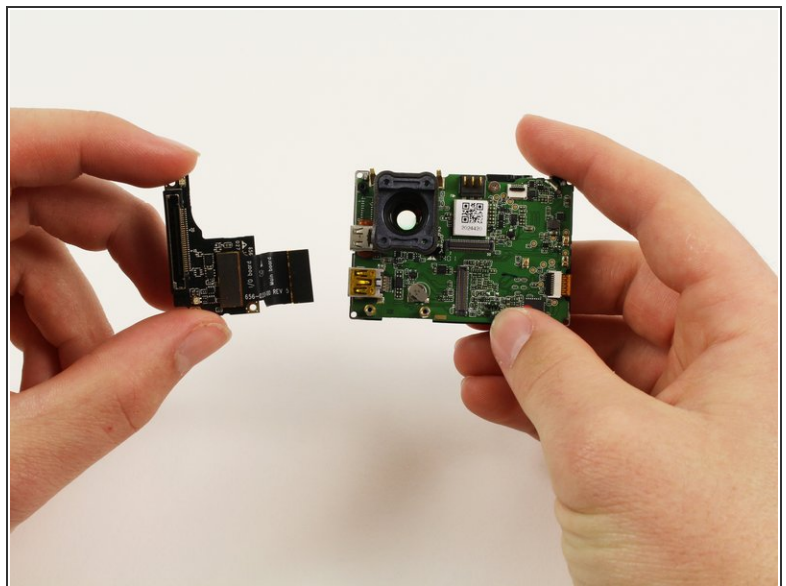
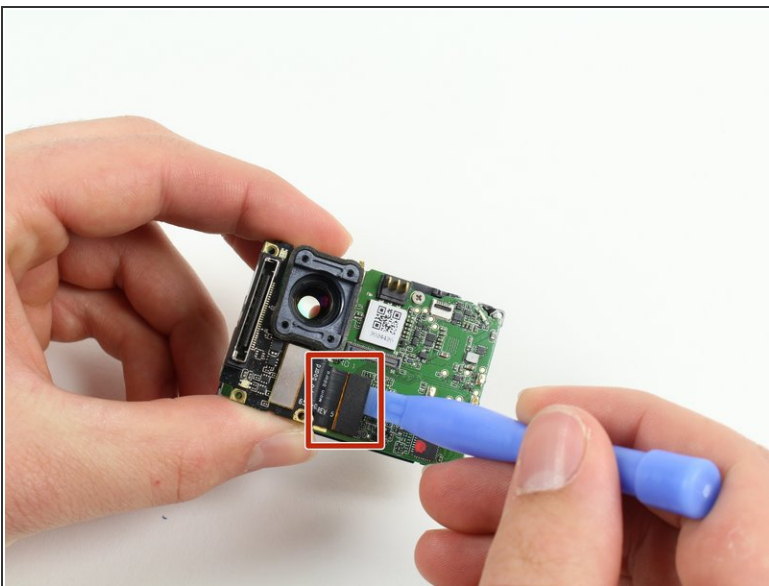
- Pry off the last ribbon cable with a plastic opening tool.
- Remove the image sensor from the motherboard.

Step 9 — microSD/Expansion Port Assembly



- Using your screwdriver, unscrew three 4mm PH00 screws that will free the metal plate.
- ⓘ A small plate will become separated when the rightmost screw is removed. Just place it to the side.

Step 10



- Use the plastic opening tool to pry off the referenced ribbon cable from the motherboard.
- The microSD and Accessory Board is now ready for removal.

To reassemble your device, follow these instructions in reverse order.