



# GoPro Hero3+ Silver Edition Image Sensor Replacement

This guide will show you how to remove and replace a faulty image sensor.

Written By: Patrick Cook



# INTRODUCTION

The image sensor is a vital part of your GoPro. However, don't fear if it has broken, this guide will bring your device back to life!



## TOOLS:

- [iFixit Opening Tools](#) (1)
- [Phillips #00 Screwdriver](#) (1)



## PARTS:

- [GoPro Hero3 Plus Silver Front Panel](#) (1)
- [GoPro Hero3 Plus Silver Image Sensor](#) (1)

## Step 1 — Battery



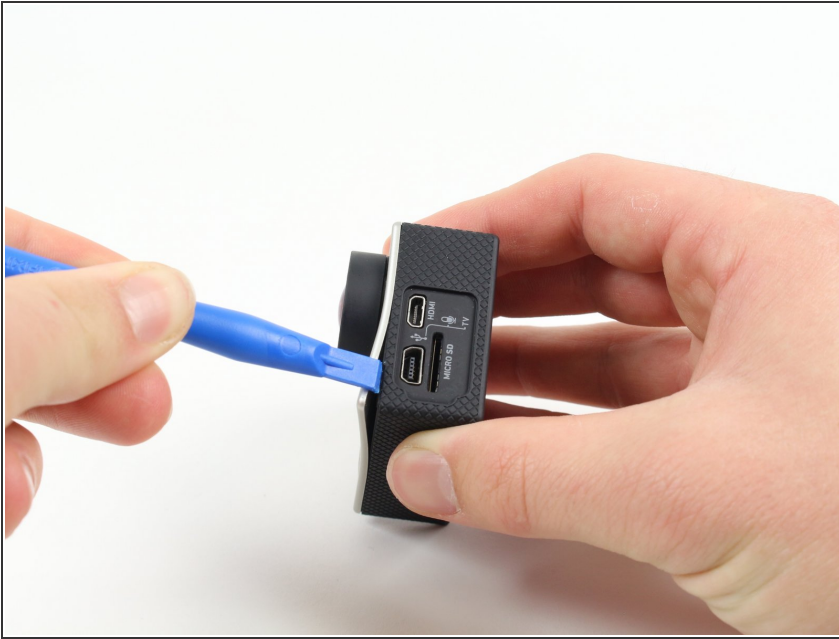
- Push the tab on the back of the device left to remove the plate covering the battery.

## Step 2



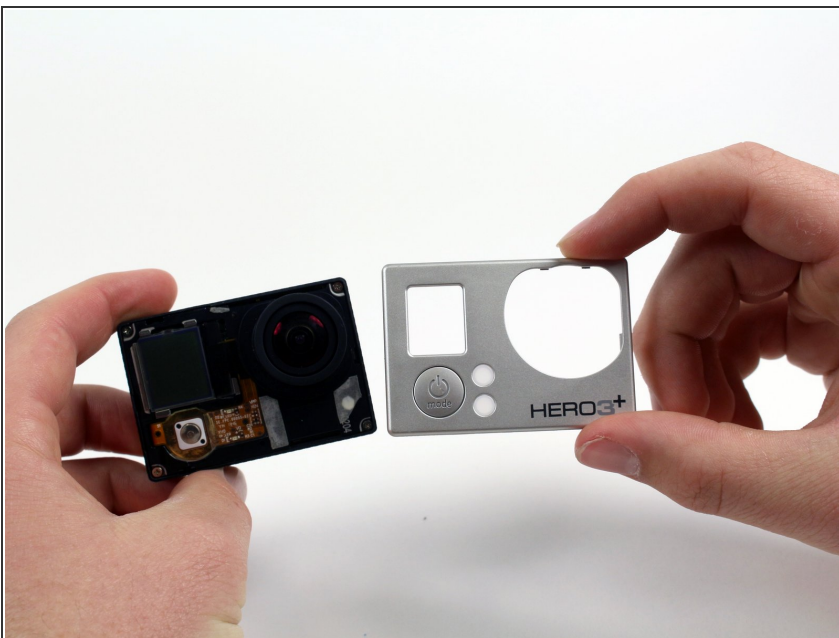
- Use the strip of tape on the battery to remove the battery from the housing.

## Step 3 — Front Panel



- Insert a plastic opening tool in between the front face plate and the black housing.
- ⓘ Make sure you insert the plastic opening tool next to the microSD card slot. There is a small gap that will help separate the face plate.

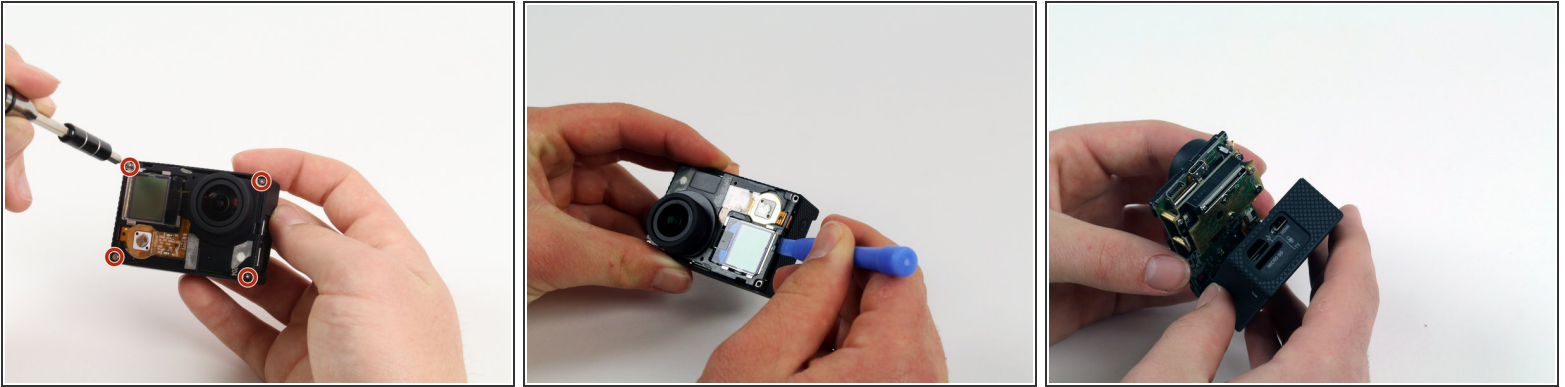
## Step 4



- Continue to use the plastic opening tool and separate the front face plate from the rest of the device.
- ⓘ There is adhesive that helps attach the front face plate. Some extra prying may be required to separate the face plate, but do not use excessive force.

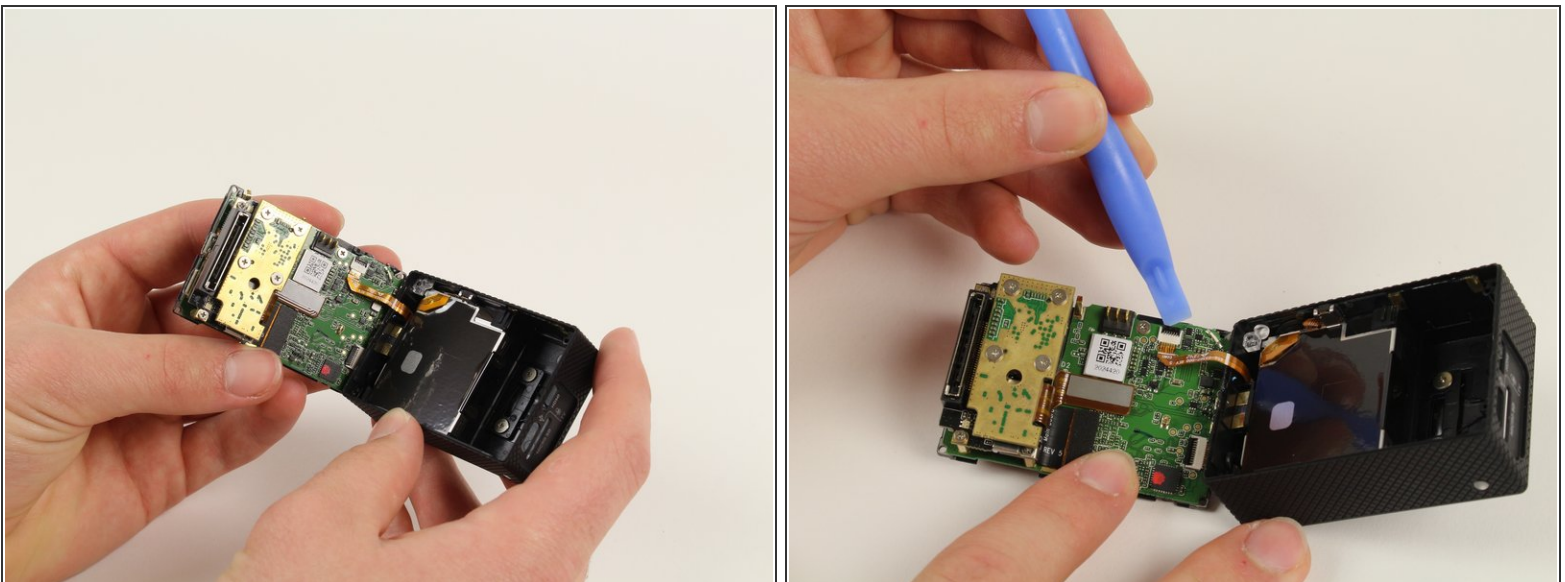


## Step 5 — Image Sensor



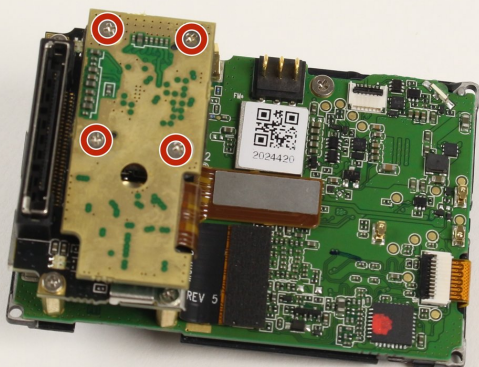
- Locate the four 8.1mm PH00 screws on the corners of the GoPro and unscrew them using the phillips screwdriver.
  - Gently remove the motherboard by using a plastic opening tool to pry it out of the housing.
- ⚠ Be careful not to damage the ribbon cable connected to the GoPro housing and motherboard.

## Step 6



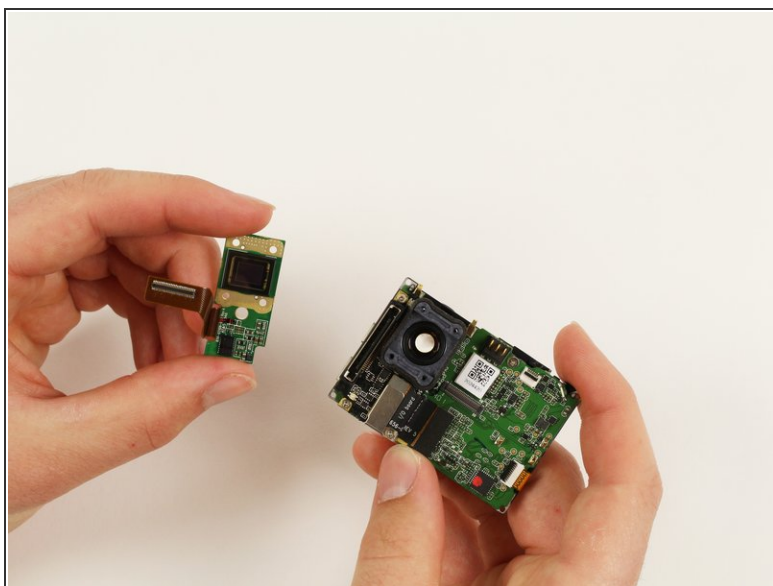
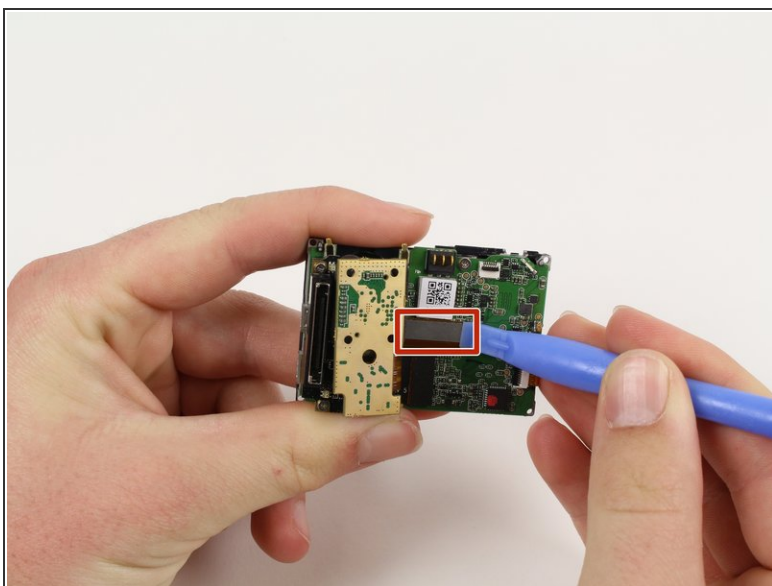
- Remove the ribbon cable by carefully flipping the black clip up with the plastic opening tool and pulling the cable out.

## Step 7



- Remove the four 4mm PH00 screws attaching the image sensor to the motherboard with your screwdriver.

## Step 8



- Pry off the last ribbon cable with a plastic opening tool.
- Remove the image sensor from the motherboard.

To reassemble your device, follow these instructions in reverse order.