



Sol Republic Deck Play/Pause Button Replacement

This guide will help you replace the play/pause "M" button on the front of the speaker.

Written By: Mary Place



INTRODUCTION

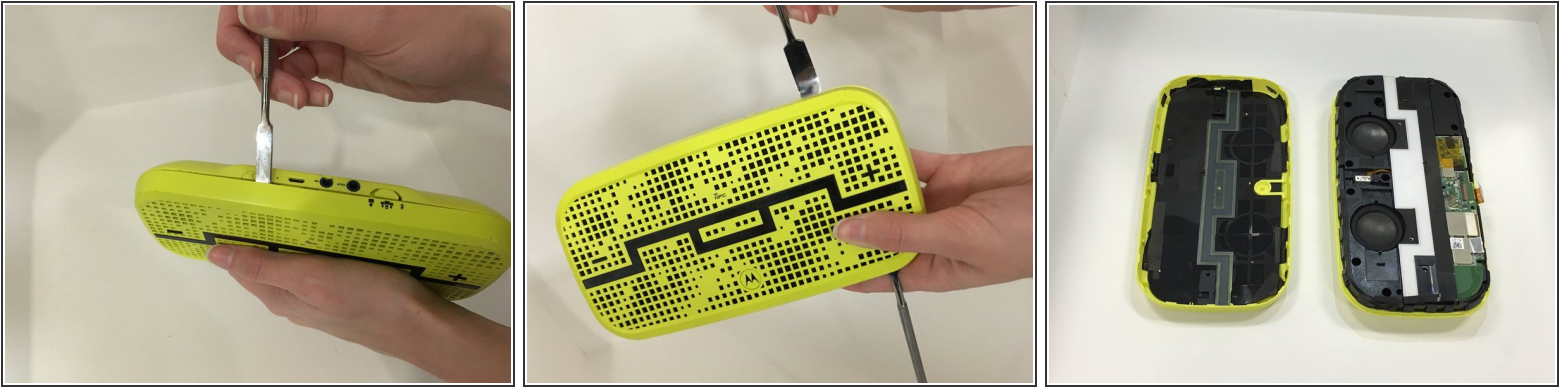
There is a play/pause button with an "M" on it located on the front cover of the speaker beneath the letters SOL. This button controls the starting and stopping of the music.



TOOLS:

- [Spudger](#) (1)
 - [Tweezers](#) (1)
-

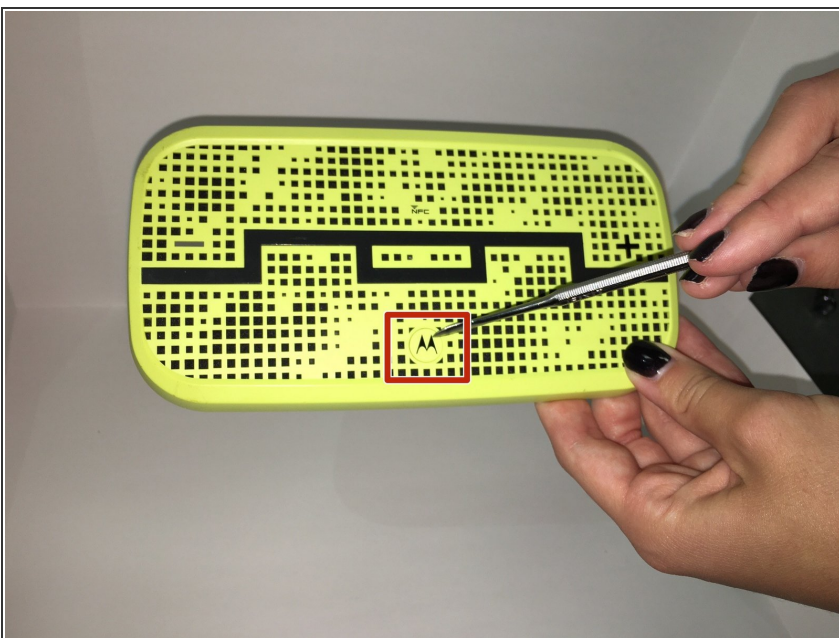
Step 1 — Play/Pause Button



⚠ When working with electronics, it's important to choose a tool that's ESD-safe to avoid accidental damage to the device. The regular black nylon spudger or a plastic opening tool should be used whenever possible.

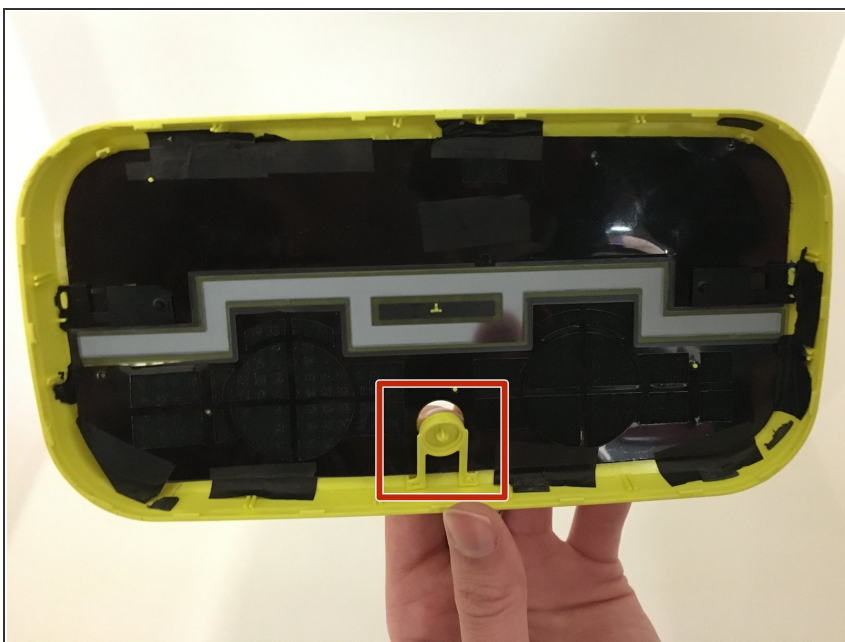
- Pry the front face plate from the bottom half of the speaker by inserting the spudger edge into the middle groove.
- Insert another spudger into the middle groove to hold the front plate up as you separate both plates on all sides. Use multiple opening tools to keep plates separated if necessary.

Step 2



- On the front face of the device, locate the green plastic Motorola (M) button that controls the playing and pausing of music.

Step 3



- Using your finger, push the M button towards the inside of the device.

Step 4



- Using the tweezers, grab the button as it comes through and pull it carefully off of the pegs.

To reassemble your device, follow these instructions in reverse order.