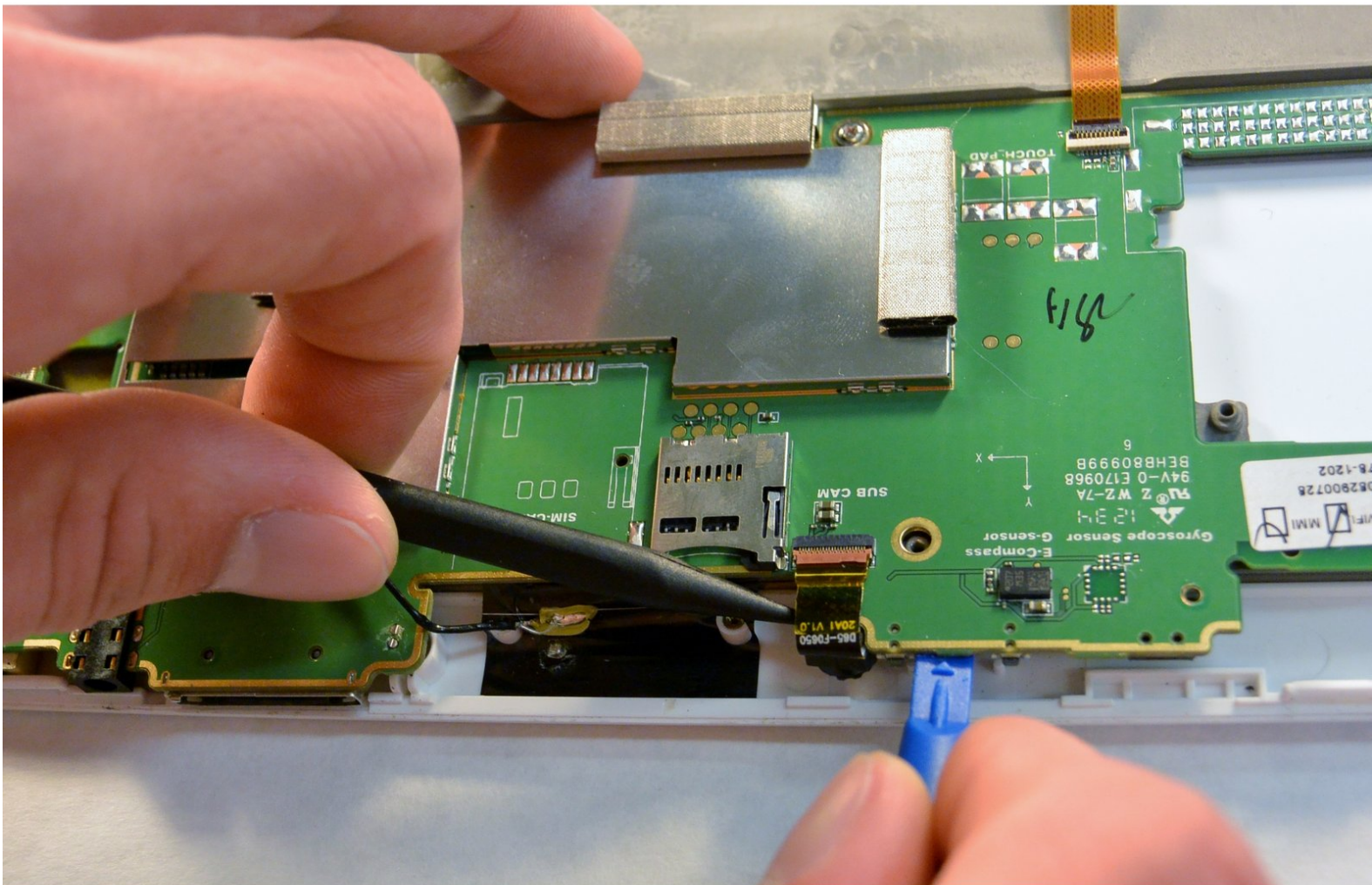




Le Pan S Camera Replacement

The camera may need to be replaced if images are not showing up correctly.

Written By: Tyler Ziliak



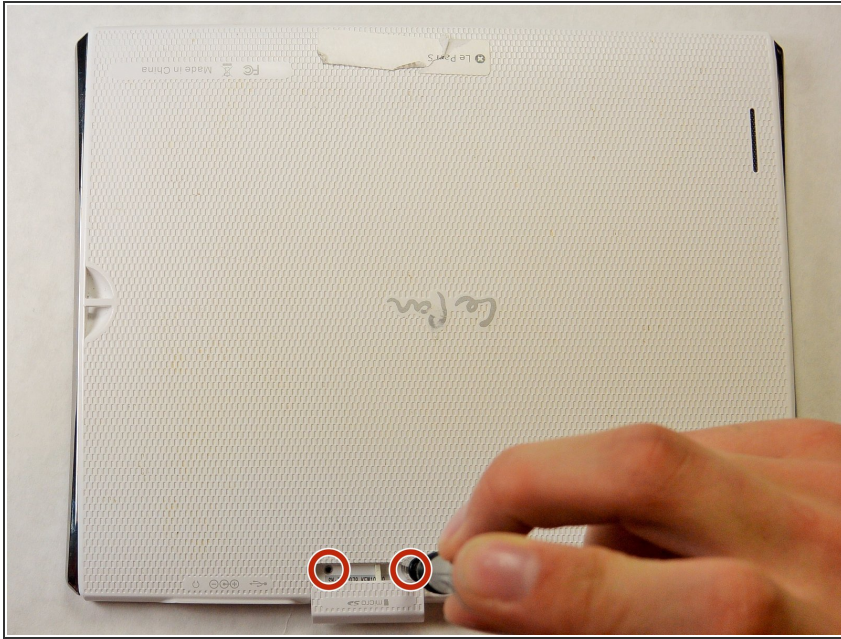
INTRODUCTION

If the images taken are black or not displayed at all, it may be time to replace the camera. Replacing the camera is a moderately easy task, and the step-by-step disassembly is listed below. No out-of-the-ordinary tools will be required for this guide.

TOOLS:

- [Phillips #00 Screwdriver](#) (1)
 - [Spudger](#) (1)
-

Step 1 — Battery



- Remove the two 3.5 mm Phillips #00 screws that are covered by the micro SD port.
- ⓘ This cover is adjacent to the volume button on the side of the Le Pan S.

Step 2



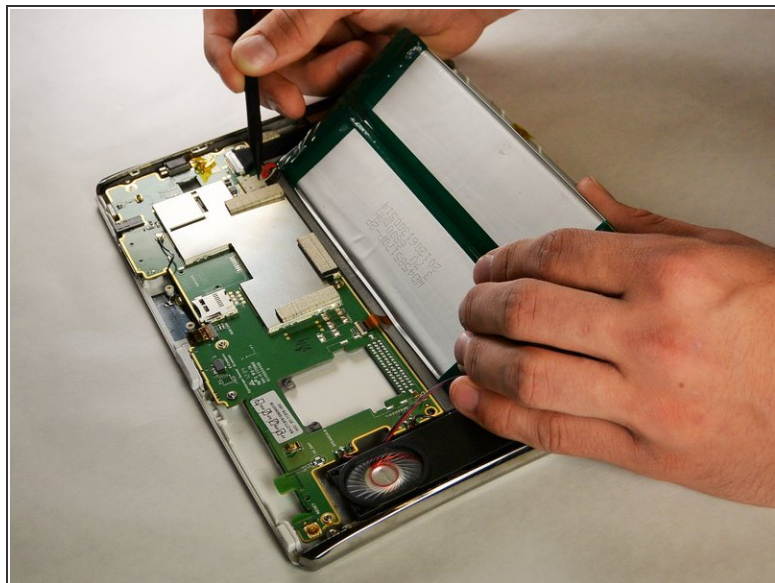
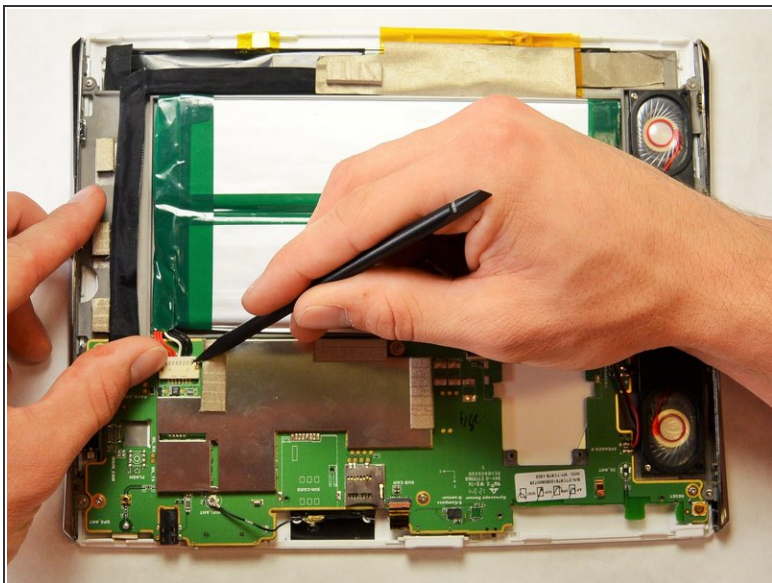
- Insert the spudger between the front and back panel in order to pry them apart.
- ⓘ Do this beside the volume button and the micro SD cover.
- Pry open the rest of the Le Pan S by dragging the spudger across the side.

Step 3



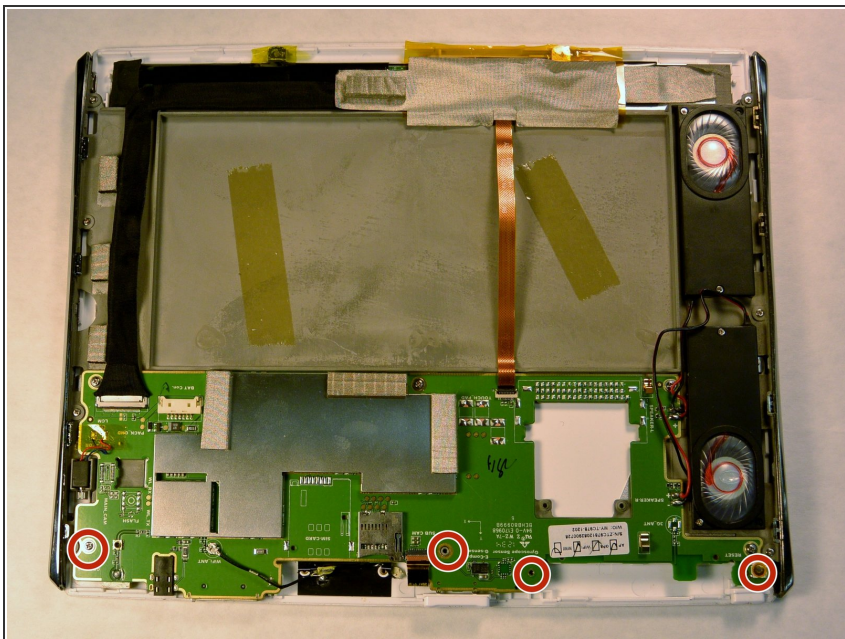
- Once the front and back faces are completely separated, remove the back cover to reveal the inside components.

Step 4



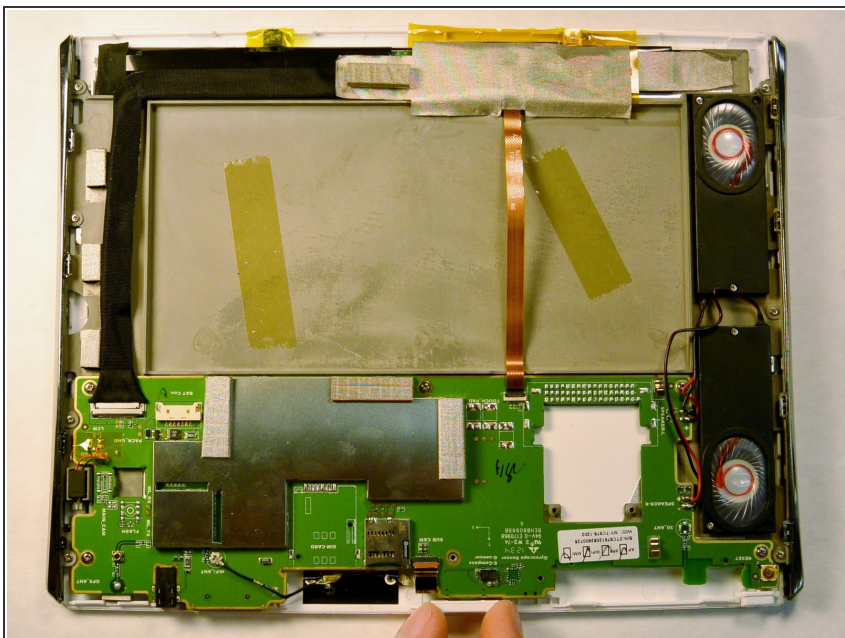
- Disconnect the battery from the circuitry and lay it out of the way.
- ⓘ The best method to complete this is to pull the bundled cable connector out with your hands. Pull towards the wires and away from the electrical board. Use the spudger to further coax the cable out.
- ✦ If you are replacing your battery, make sure to dispose of it properly.

Step 5 — Camera



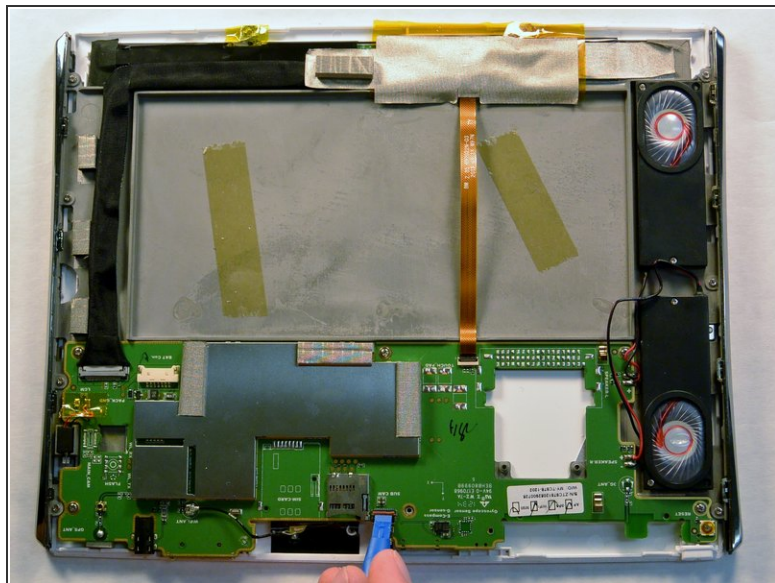
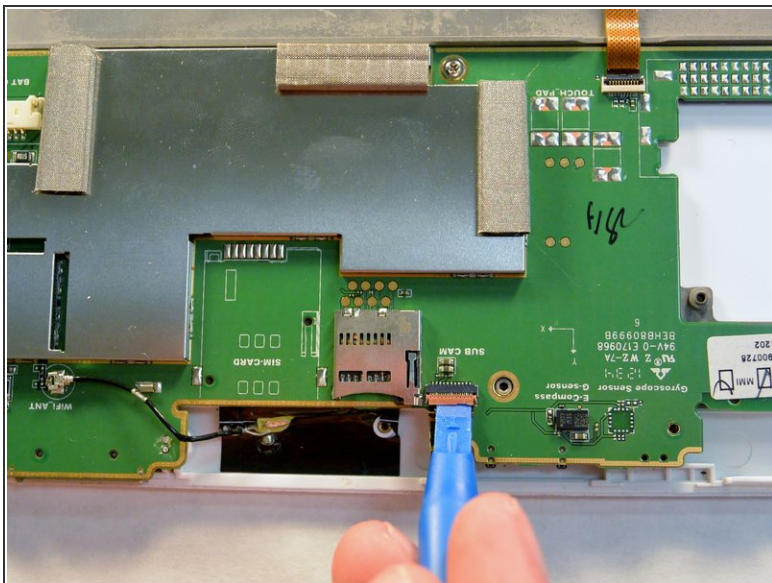
- Remove the four 3.5 mm Phillips #00 screws from the circuit board near the bottom of the tablet.

Step 6



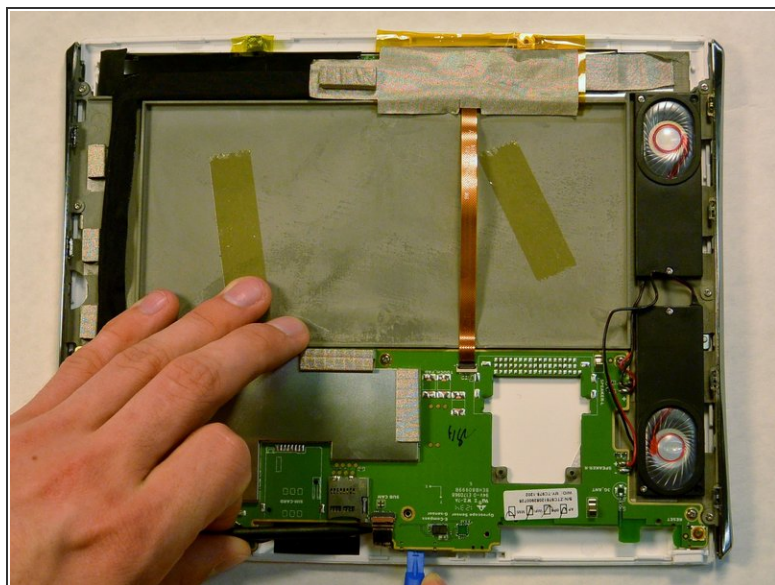
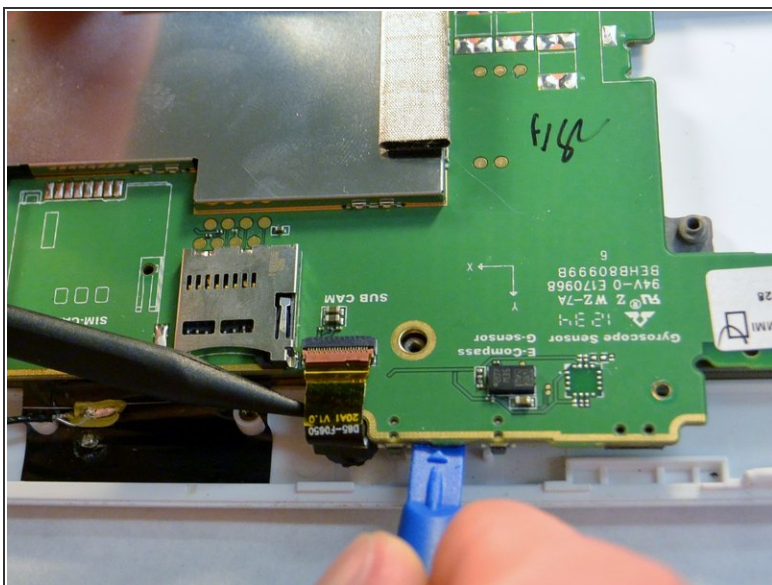
- Lift and pull the volume rocker up so it is out of the way of the camera.

Step 7



- Remove the zero insertion force connector (ZIF) by using a plastic opening tool, spudger, or fingernail to lift retaining flap.

Step 8



- Slightly lift up the green electrical board and pull out the camera.

To reassemble your device, follow these instructions in reverse order.