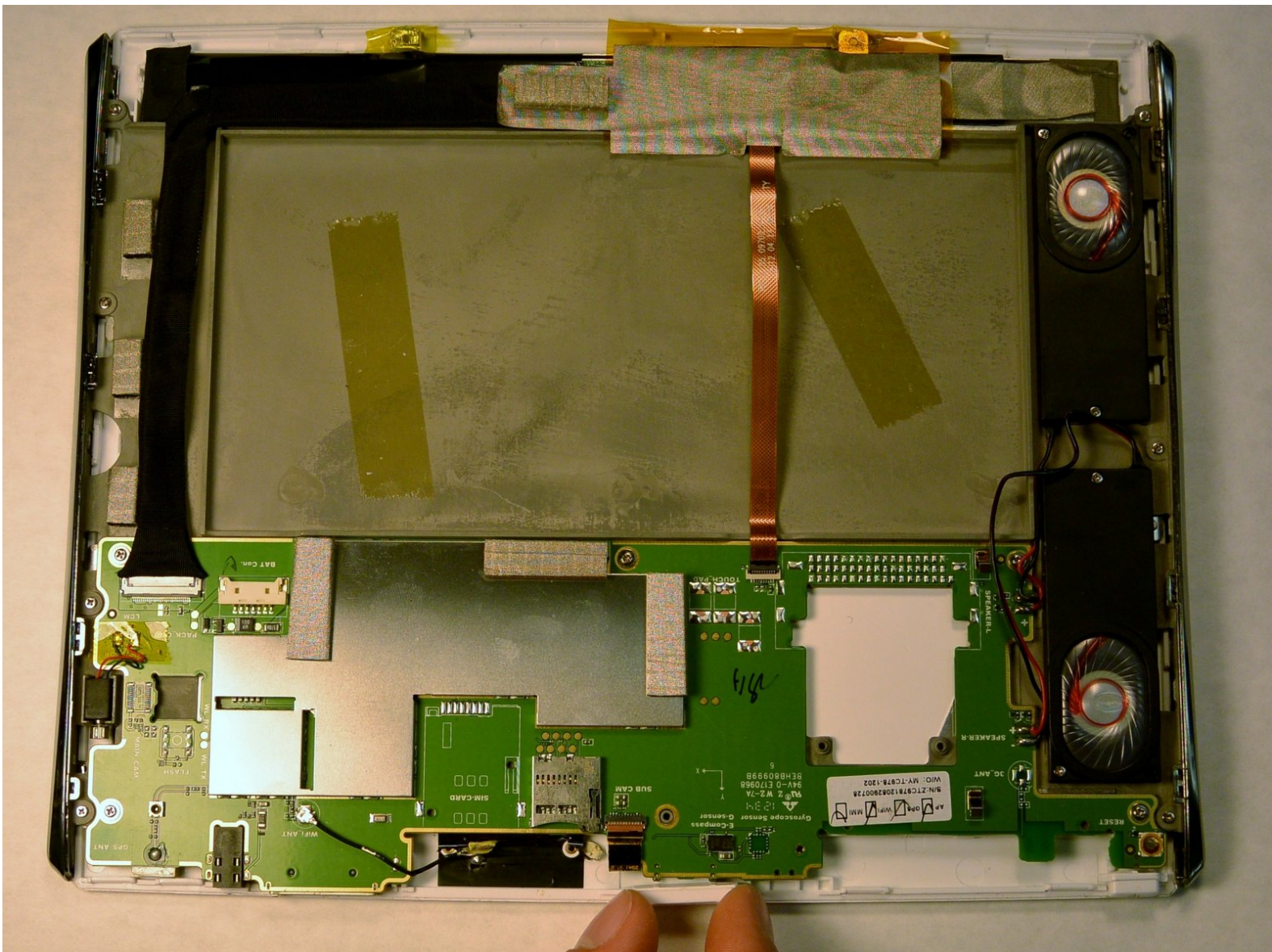




Le Pan S Volume Rocker Replacement

A cracked or bent volume rocker may cause it to become misaligned. It may be necessary to remove and realign the rocker. If the rocker cannot be realigned, it will need to be replaced as shown.

Written By: Wiaam Elkhatib



INTRODUCTION

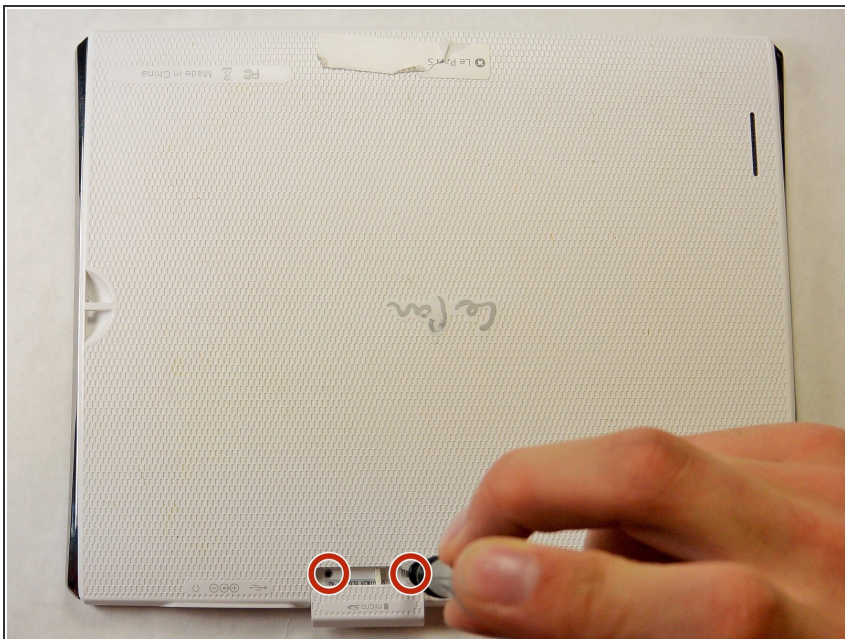
First, check to see if the volume is turned up to a reasonable level by using both the volume rocker on the side of the device and the digital volume bar in the settings menu. If the troubleshooting has not solved the issue, the volume rocker will need to be replaced in a few simple steps. Minimal tools will be needed for this guide.



TOOLS:

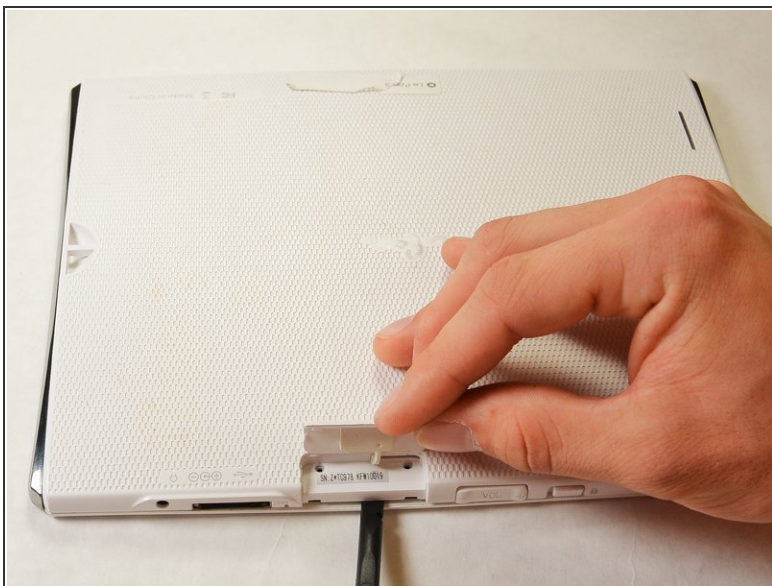
- [Phillips #00 Screwdriver](#) (1)
 - [iFixit Opening Tools](#) (1)
 - [Spudger](#) (1)
-

Step 1 — Battery



- Remove the two 3.5 mm Phillips #00 screws that are covered by the micro SD port.
- ⓘ This cover is adjacent to the volume button on the side of the Le Pan S.

Step 2



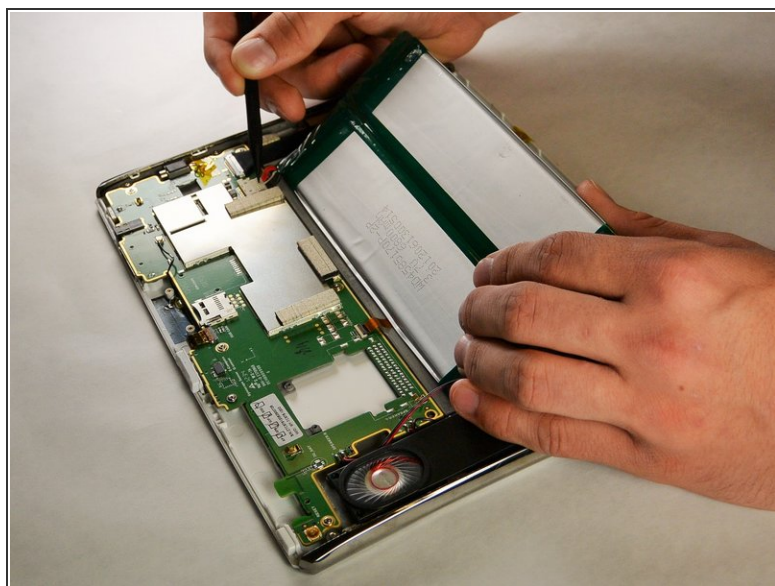
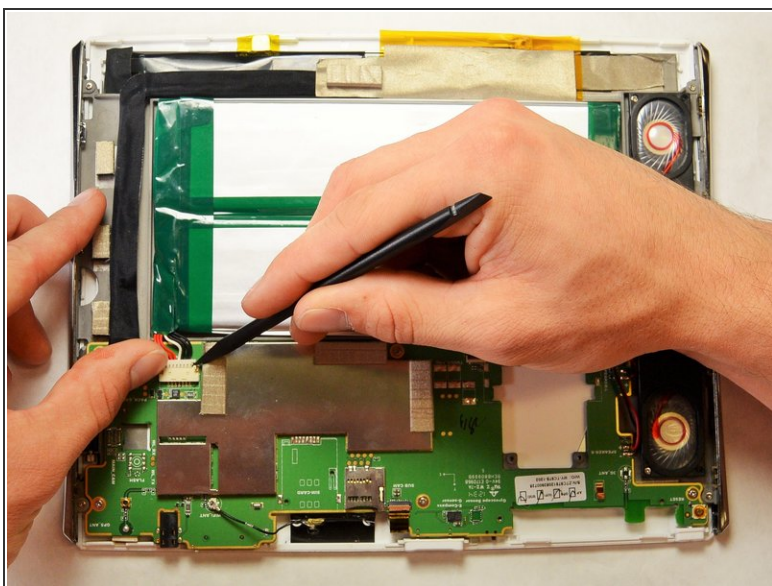
- Insert the spudger between the front and back panel in order to pry them apart.
- ⓘ Do this beside the volume button and the micro SD cover.
- Pry open the rest of the Le Pan S by dragging the spudger across the side.

Step 3



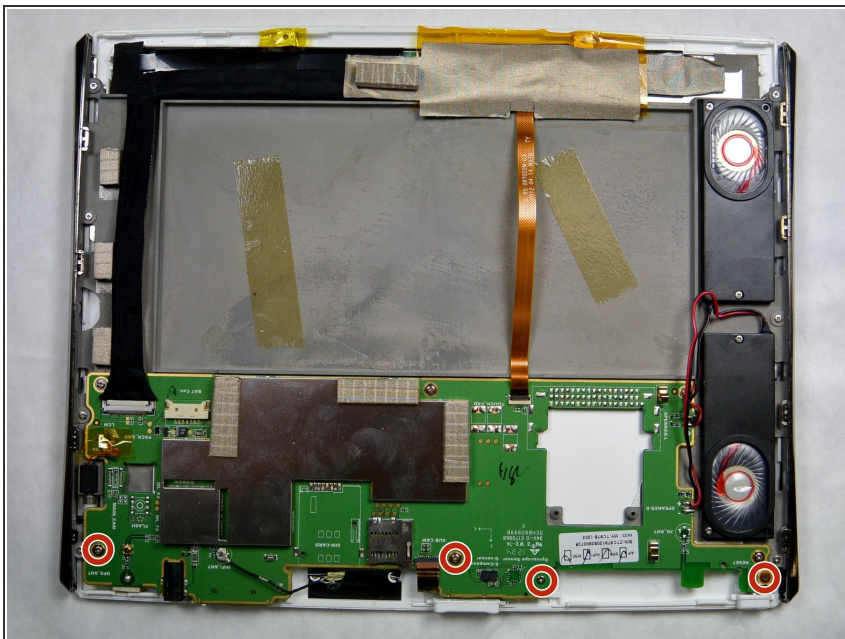
- Once the front and back faces are completely separated, remove the back cover to reveal the inside components.

Step 4



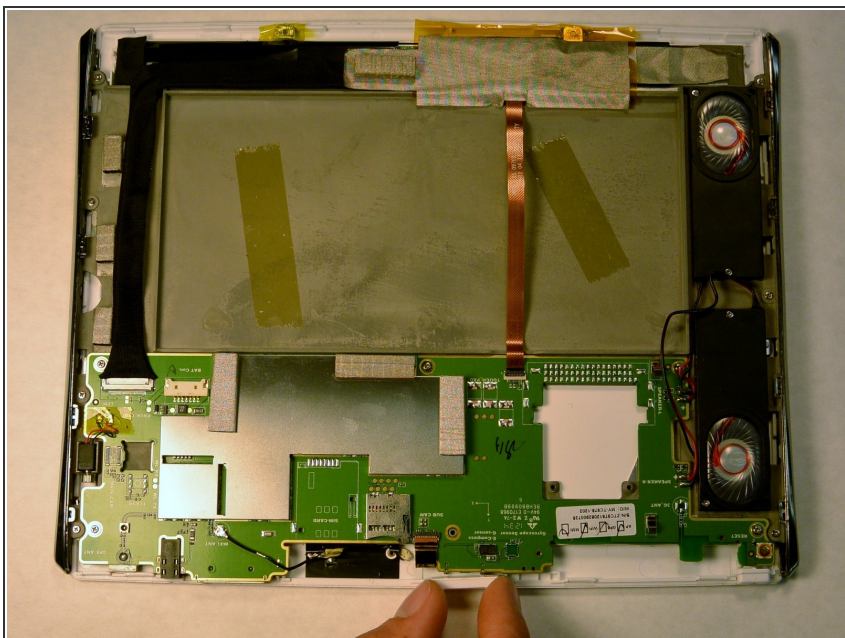
- Disconnect the battery from the circuitry and lay it out of the way.
- ⓘ The best method to complete this is to pull the bundled cable connector out with your hands. Pull towards the wires and away from the electrical board. Use the spudger to further coax the cable out.
- ✦ If you are replacing your battery, make sure to dispose of it properly.

Step 5 — Volume Rocker



- Remove the four 2.5 mm Phillips #00 head screws from the circuit board near the top of the tablet.

Step 6



- Pull out the volume rocker by carefully moving it side to side with your fingers.

To reassemble your device, follow these instructions in reverse order.