



Canon PowerShot ELPH 310 HS Shutter Button Replacement

The Canon PowerShot Elph 310 HS has an issue with the shutter button/picture taking button sticking. The replacement guide for repairing the device can be found below.

Written By: Brandon



INTRODUCTION

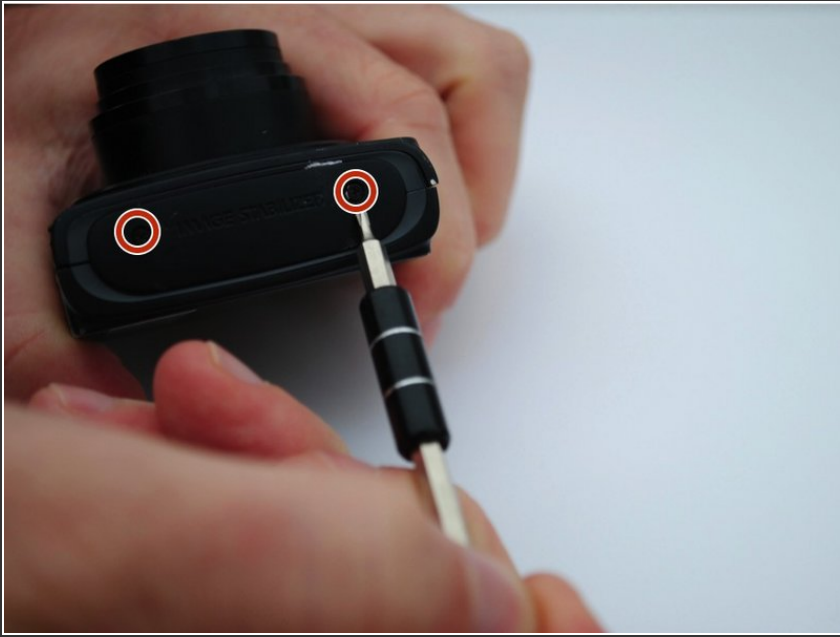
The Canon PowerShot Elph 310 HS may have issues with the shutter button sticking. Replacing the button should only take a few minutes with these steps.



TOOLS:

- [Phillips #000 Screwdriver](#) (1)
-

Step 1 — External Panels



- Use the Phillips #000 screwdriver from the iFixit tool kit to unscrew the two image stabilizer panel's 2 mm Phillips head screws.
- Using your hands, remove the image stabilizer panel.

Step 2



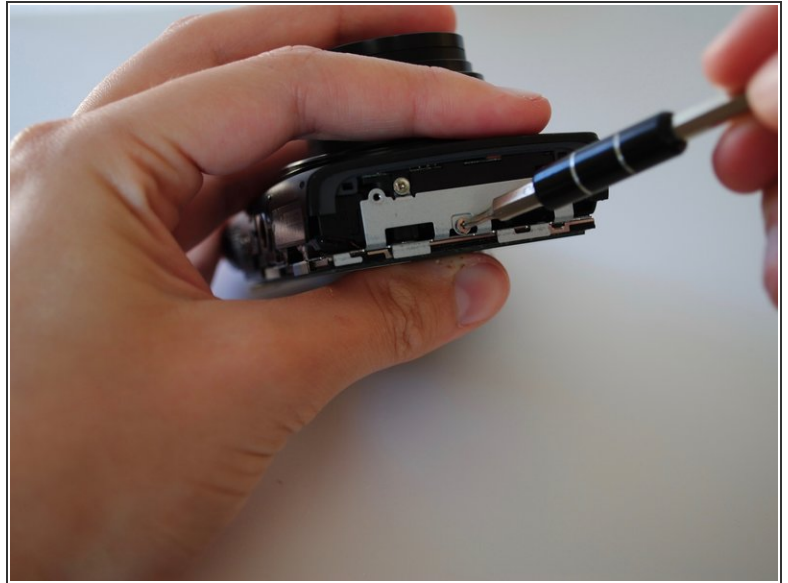
- Unscrew the two 4 mm Phillips head screws from the bottom side of the camera.

Step 3



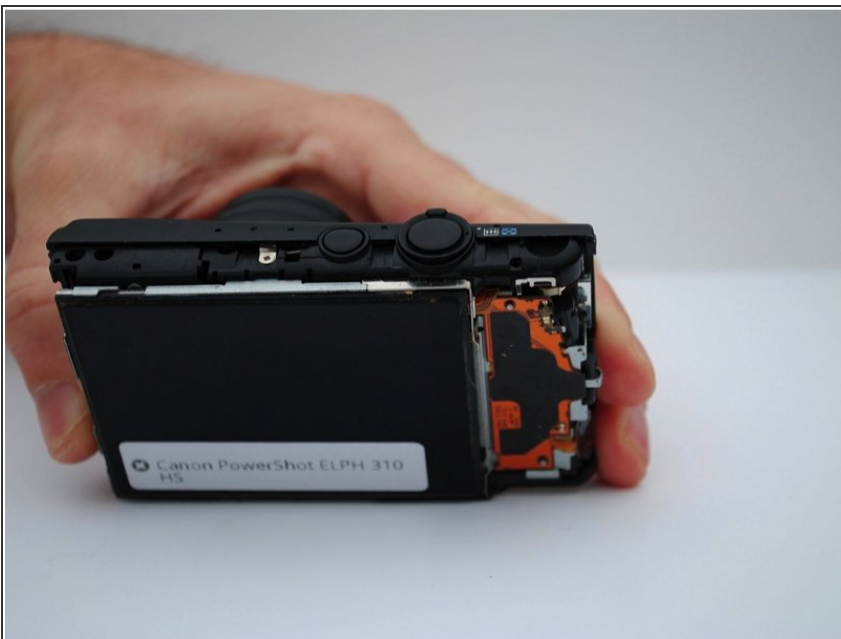
- Using your hand, open the battery portal located on the bottom left of the camera. The screw is in the bottom left of the battery portal.
- Unscrew the hidden 4mm Phillips head screw inside the battery portal.

Step 4



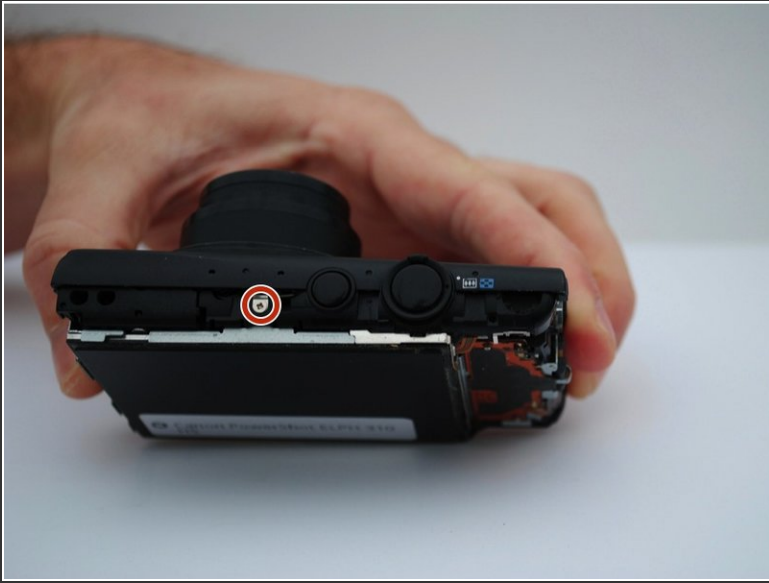
- Remove the HDMI side panel with your hands.
- Unscrew the four 4 mm Phillips head screws from the inside of the camera.

Step 5



- The back side of the camera should pop off or be removed by hand.

Step 6



- Unscrew the one 3 mm Phillips head screw on the top of the camera.

Step 7



- Manually remove the front panel from the camera.

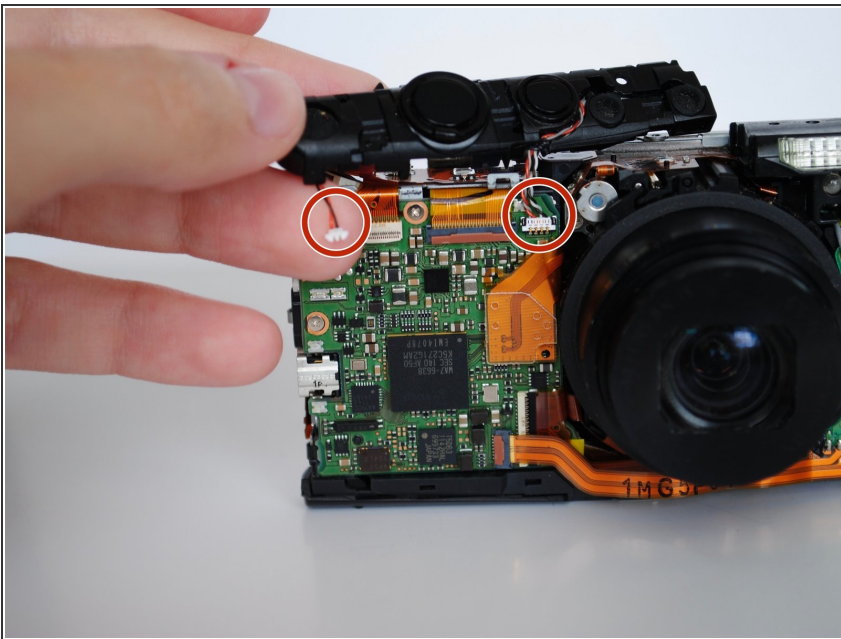
Step 8 — Shutter Button



- Using your hand, lift and remove the shutter button deck from the top of camera.

⚠ The front clasp is fragile.

Step 9



- Unclip the cables from the front of the motherboard, using your hands.

To reassemble your device, follow these instructions in reverse order.