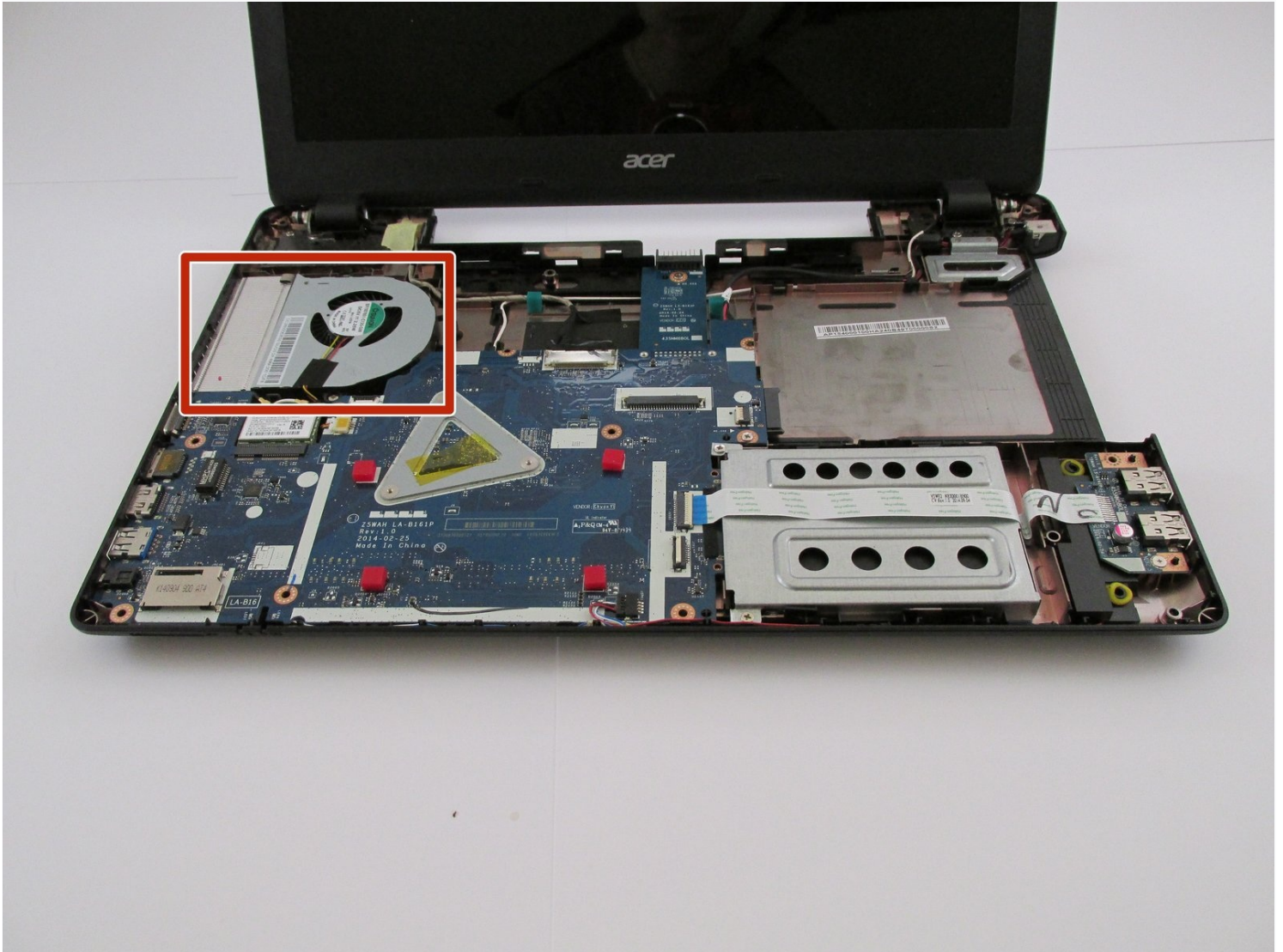




# Acer Aspire E5-571 CPU Fan Replacement

Is your laptop overheating or staying on for a...

Written By: daniel sawyer



# INTRODUCTION

Is your laptop overheating or staying on for a few minutes and then powering itself down? Your CPU Fan may be to blame. This guide will show you how to replace it.

---

## TOOLS:

Metal Spudger (1)

Phillips #0 Screwdriver (1)

iFixit Opening Tool (1)

Phillips #1 Screwdriver (1)

---

## Step 1 — Battery



 Make sure the laptop is shut down.

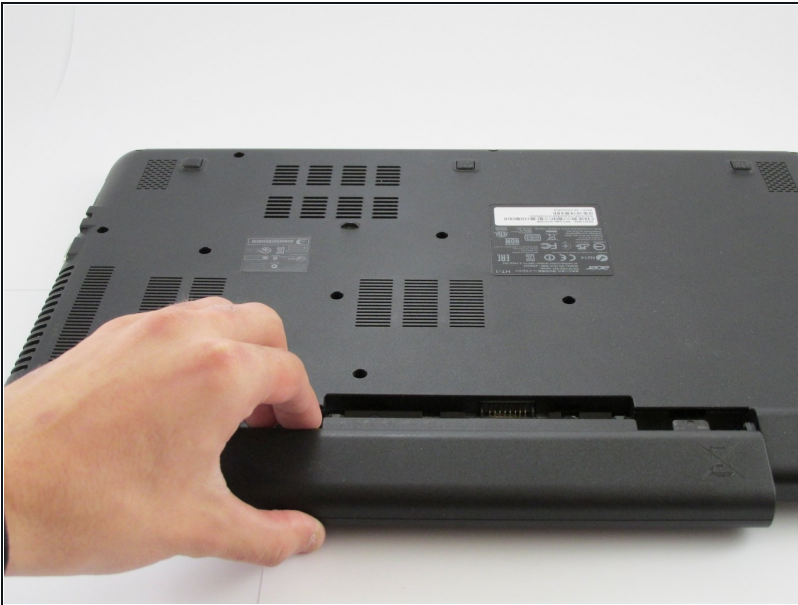
- Flip the laptop upside down. Rotate it so the battery faces you.

## Step 2



- Place the pointed end of a spudger into the battery lock. Slide the battery lock to the left using the spudger. A "click" sound will accompany the release of the battery.

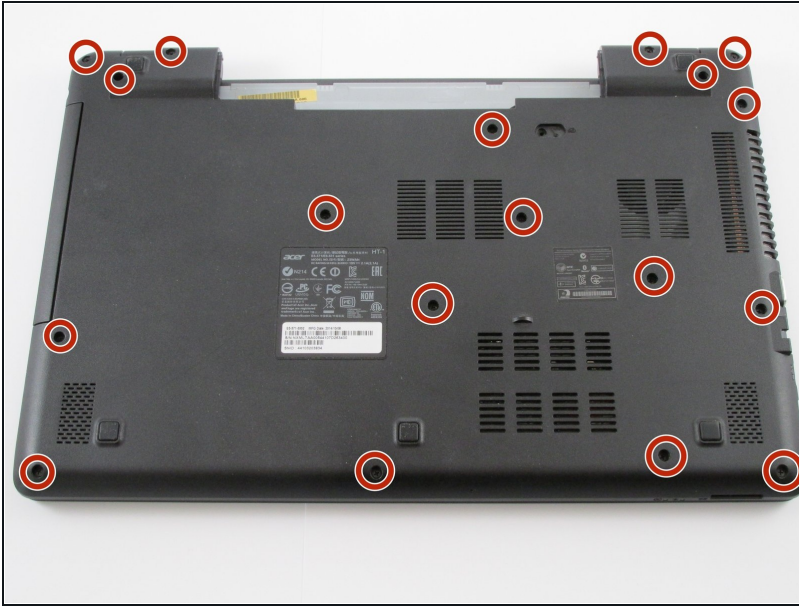
## Step 3



- Pull the battery towards you to remove it from the laptop.



## Step 4 — Keyboard



- Remove all eighteen 8 mm screws with a Phillips #0 screwdriver.

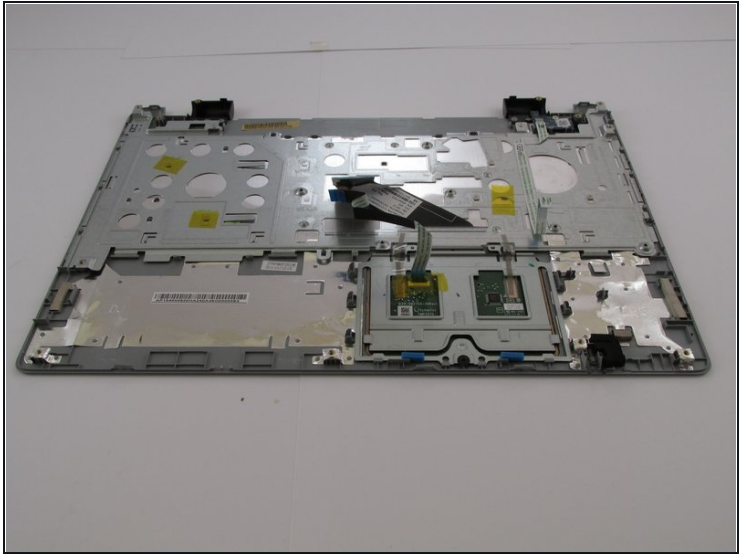
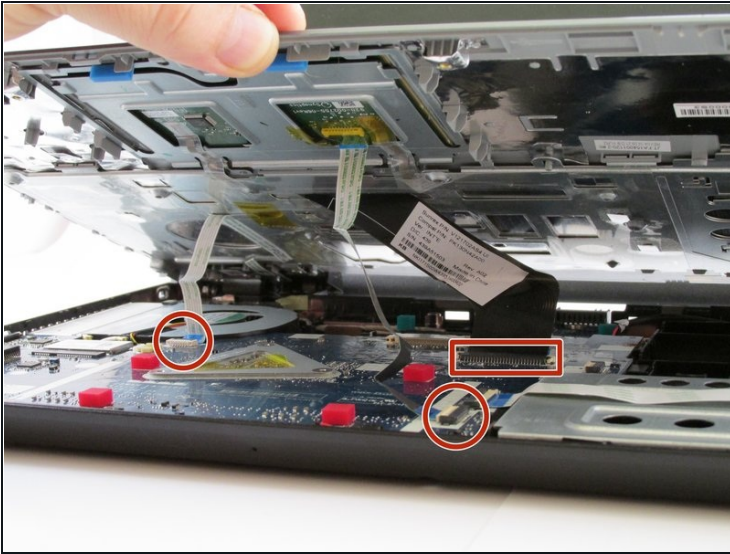
## Step 5



- Carefully pry apart the clips holding the keyboard in place by moving a metal spudger along the seam.

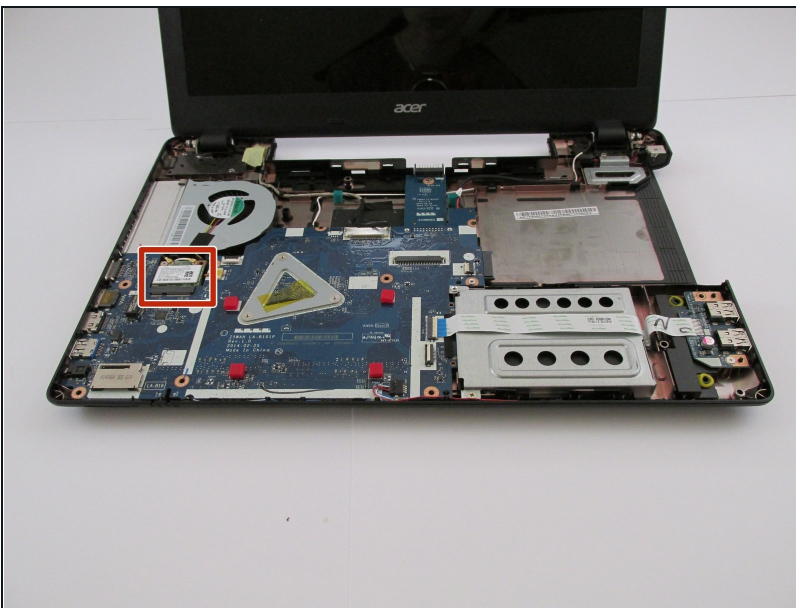
⚠ Be careful not to break the plastic clips. Do not remove the keyboard until told to do so.

## Step 6



- Carefully flip up the white hinge. Then, detach the three ZIF ribbons connected to the motherboard.
- Remove the panel with the keyboard and the touchpad.

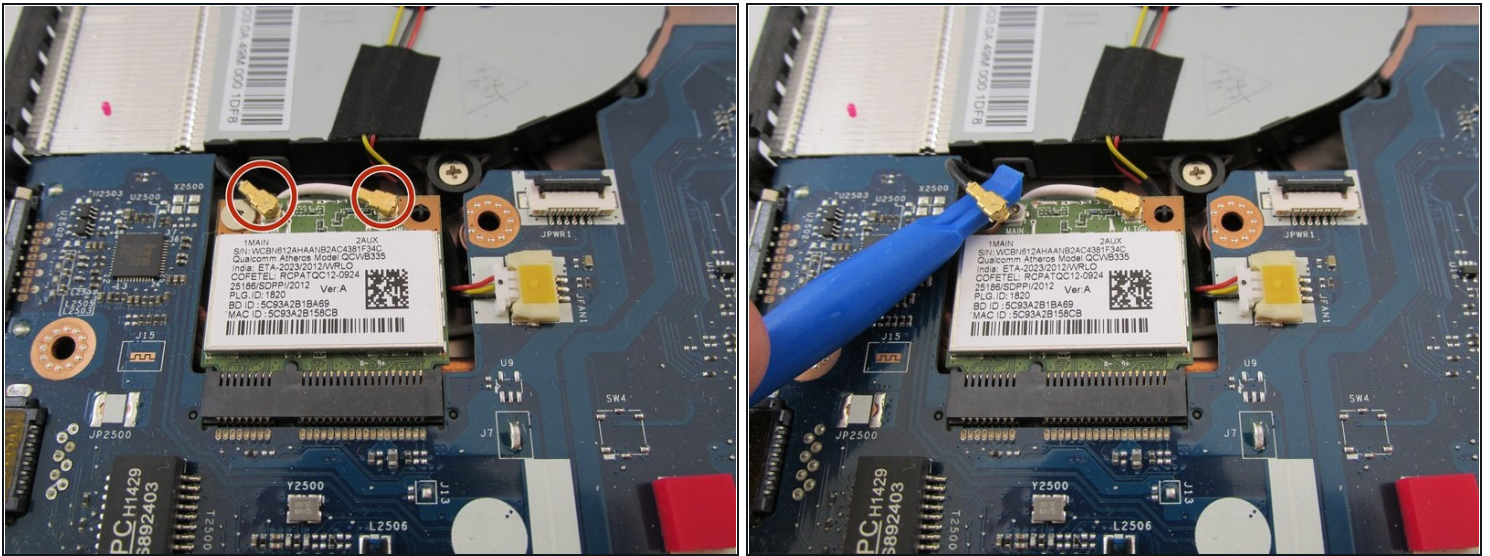
## Step 7 — WiFi



- Locate the WiFi card on the motherboard.



## Step 8



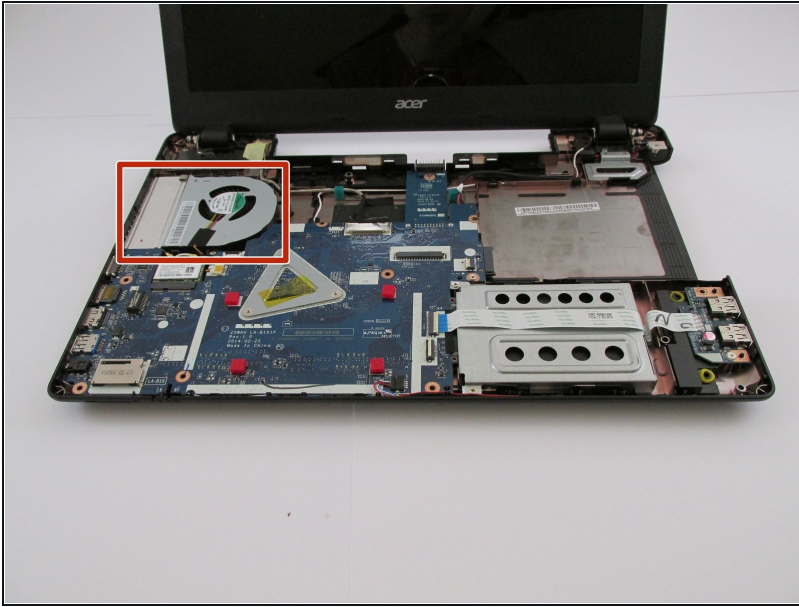
- Locate the two antenna cables shown.
- Using a plastic opening tool, remove both antenna cables from the WiFi card by gently prying them up.
- ① Black on left. White on right.

## Step 9



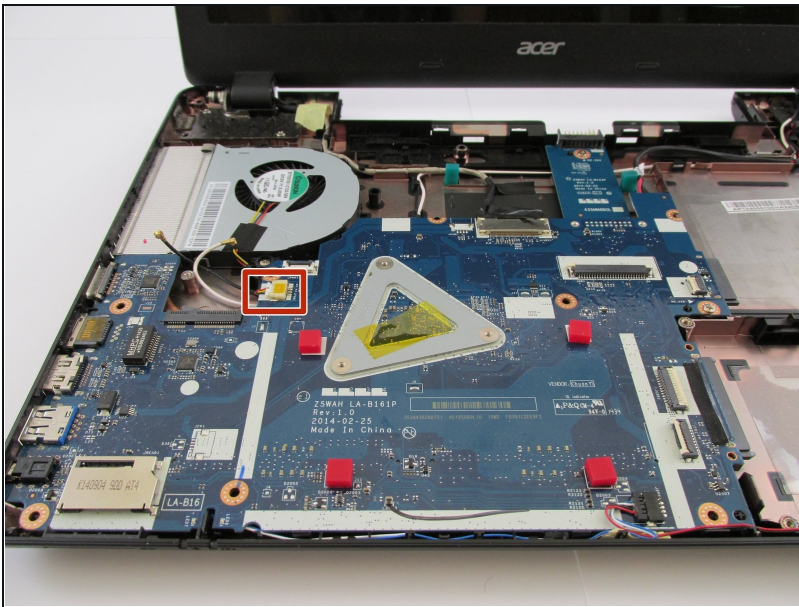
- Remove this 3 mm Phillips #0 screw and the WiFi card should pop up.  
⚠ Make sure antenna cables are removed before removing the screw.
- Gently lift WiFi card off of the motherboard.

## Step 10 — CPU Fan



- Locate the CPU Fan in the case right above the motherboard.

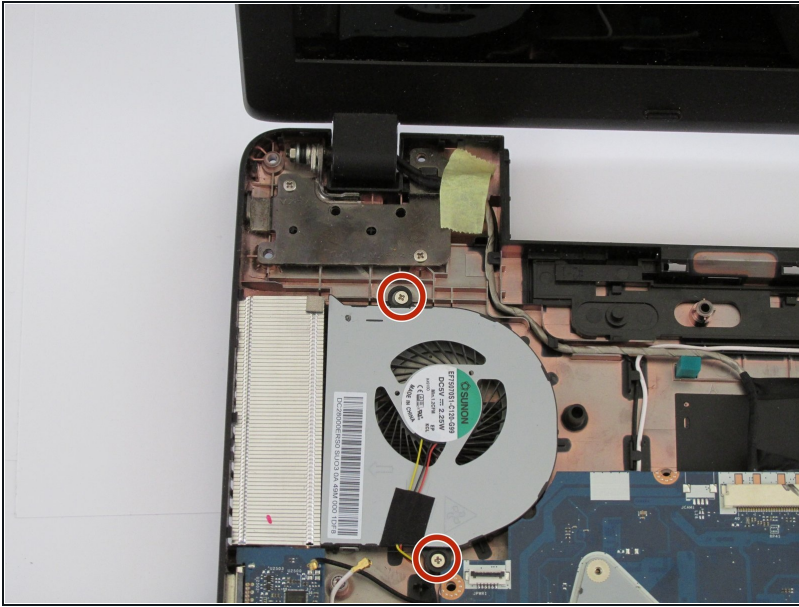
## Step 11



- Detach the power cable by carefully pulling on it, it will come off easily.



## Step 12



- Remove both of these 6 mm Phillips #1 screws which hold the fan onto the case.
- Now carefully lift the fan straight up and out of its place in the case.
- ① The fan should easily come right out with no trouble.

To reassemble your device, follow these instructions in reverse order.