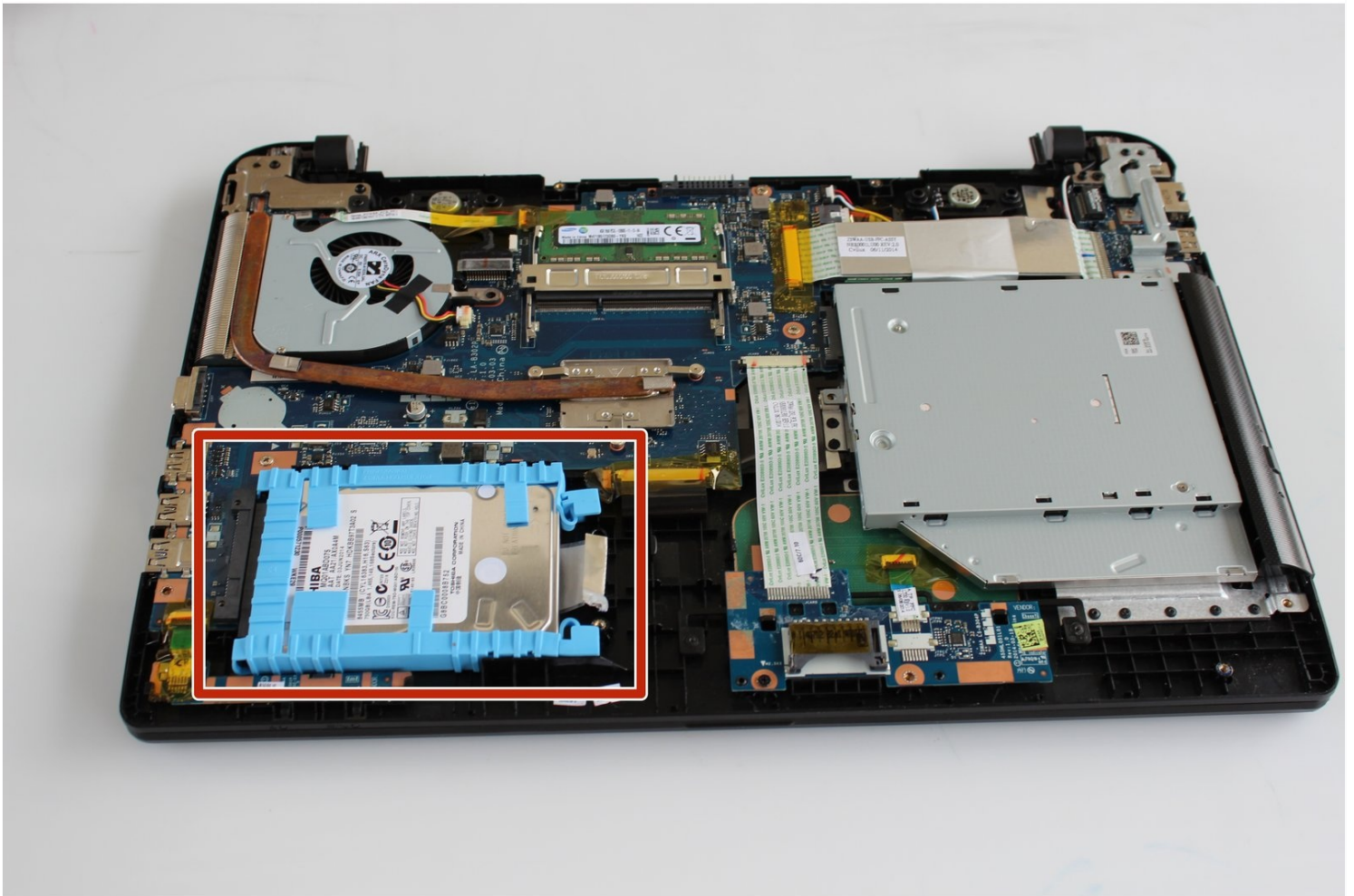




Toshiba Satellite C55D-B5206 Hard Drive Replacement

Hard disks may crash after long periods of use....

Written By: Michelle



INTRODUCTION

Hard disks may crash after long periods of use. In the event your hard drive crashes, or you simply desire to upgrade to a solid state drive. Replacing the hard drive is moderately easy and requires a few simple steps.

🔧 TOOLS:

Metal Spudger (1)
Phillips #1 Screwdriver (1)

⚙️ PARTS:

250 GB SSD (1)
500 GB SSD (1)
1 TB SSD (1)
2 TB SSD (1)

Step 1 — Battery



- Turn the laptop upside down so the battery faces upwards.
- Remove the two 7 mm Phillips screws that secure the battery.

Step 2



- Place both thumbs on the outside edges of the battery that meet the device.
- Push the battery out and away from the laptop.
 - ⓘ The battery should slide out with little resistance.

Step 3 — Back Casing



- Remove the thirteen 7 mm Phillips #1 screws from the bottom of the chassis.

Step 4



- Starting at the center, insert a spudger into the crevice between the bottom casing and the keyboard and pry upwards.
- Gently slide the spudger along the entire perimeter of the device and pry the casing loose to unhook six clips.

⚠ These images show a metal spudger, which has the potential to damage the device. Use a plastic opening tool or standard spudger instead.

- ⓘ Do not be alarmed if you feel a gentle tug or hear a click as you slide your spudger. These sounds are the clips detaching from the casing.

Step 5



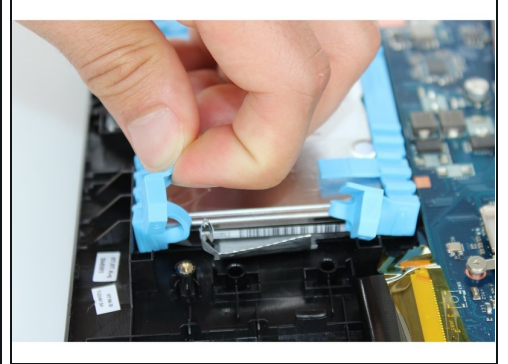
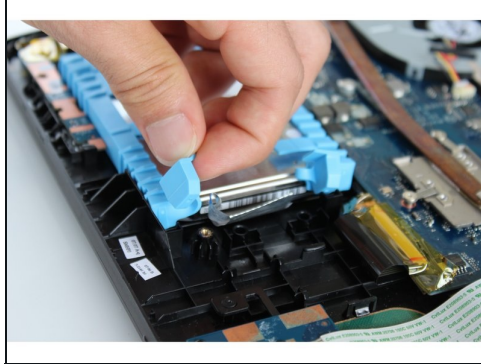
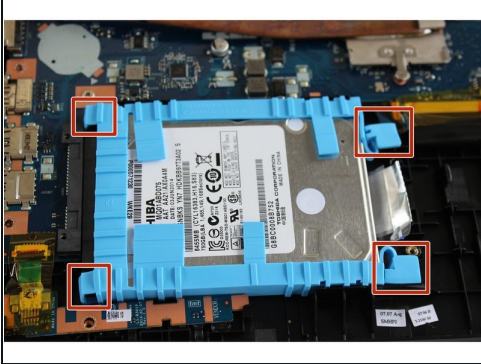
- Use your fingers to finish removing the casing from the device.

Step 6 — Hard Drive



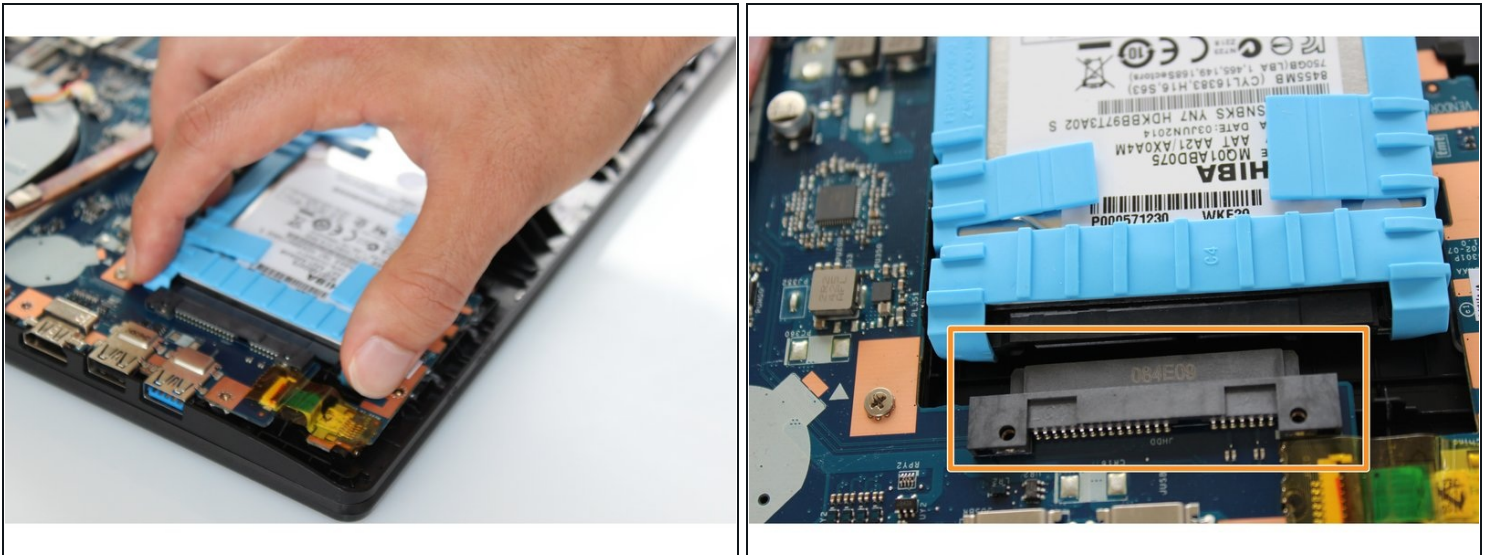
- Once the device is open from the bottom, look for the bright blue plastic frame which encases the hard drive

Step 7



- Locate the four side plugs of the blue plastic casing which secure the hard drive in place.
- Unplug the four clips by gently pulling them upward.

Step 8



- Gently slide the hard disk towards the right side of your laptop.
- The hard disk drive should now be free from the black connector port.

Step 9



- Gently lift the hard drive upward, removing it from the Toshiba device.
- The hard disk should now be completely removed from the Toshiba Satellite C55D device.

To reassemble your device, follow these instructions in reverse order.