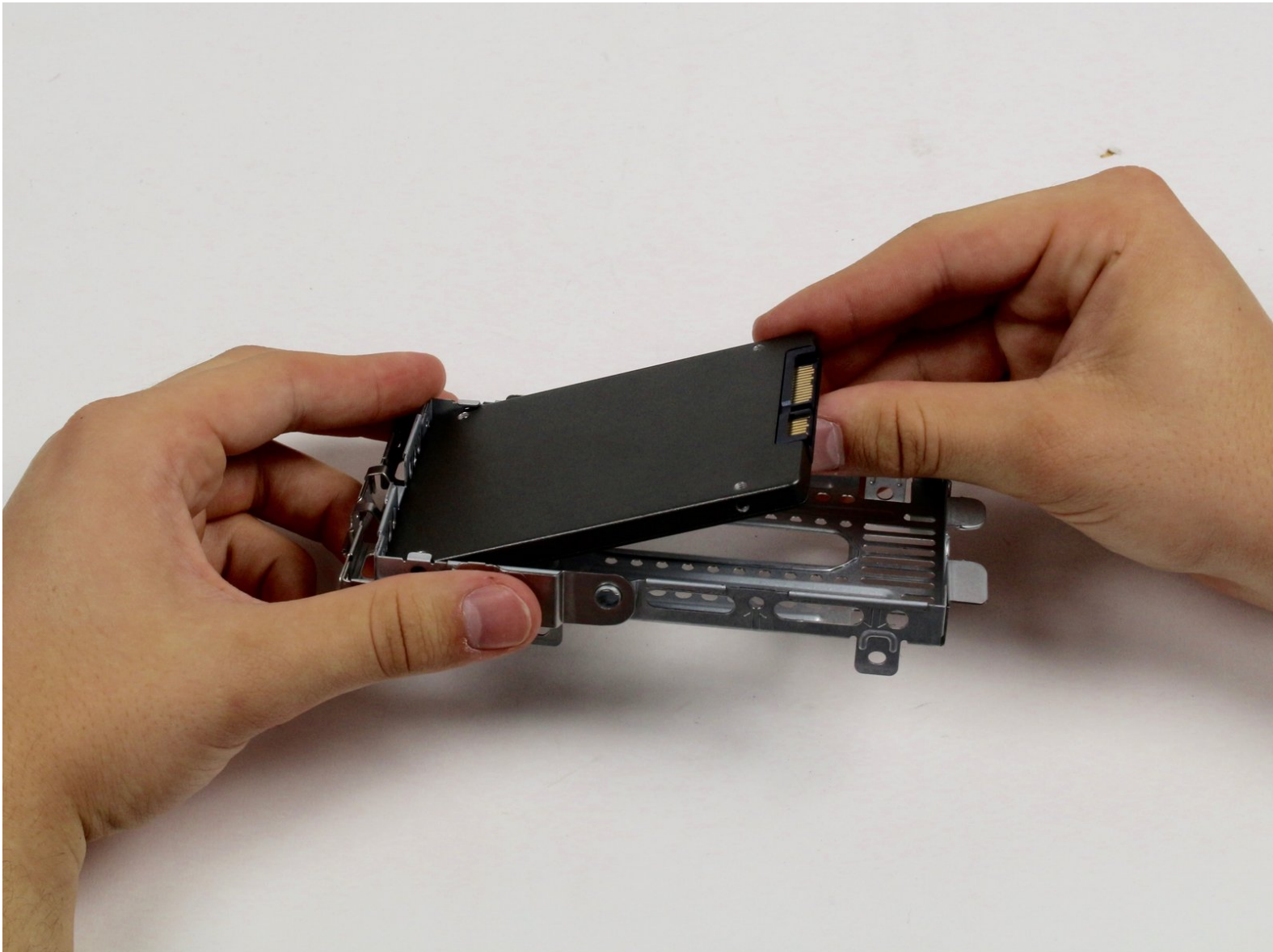




HP EliteOne 800 G1 Hard Disk Drive / Solid State Drive Replacement

Follow this guide to replace the drive if you want to increase memory size or replace a corrupted drive.

Written By: Kyle Koivuniemi



INTRODUCTION

This guide is meant to show you how to replace a broken, malfunctioning, corrupted or otherwise inadequate drive. This guide requires a small amount of technical knowledge and is considered a moderately easy guide. There are no hazards associated with this guide, but it is vital to keep track of all the small parts that are removed during the process.



TOOLS:

- [T15 Security Torx Screwdriver](#) (1)
-

Step 1 — Hard Disk Drive / Solid State Drive



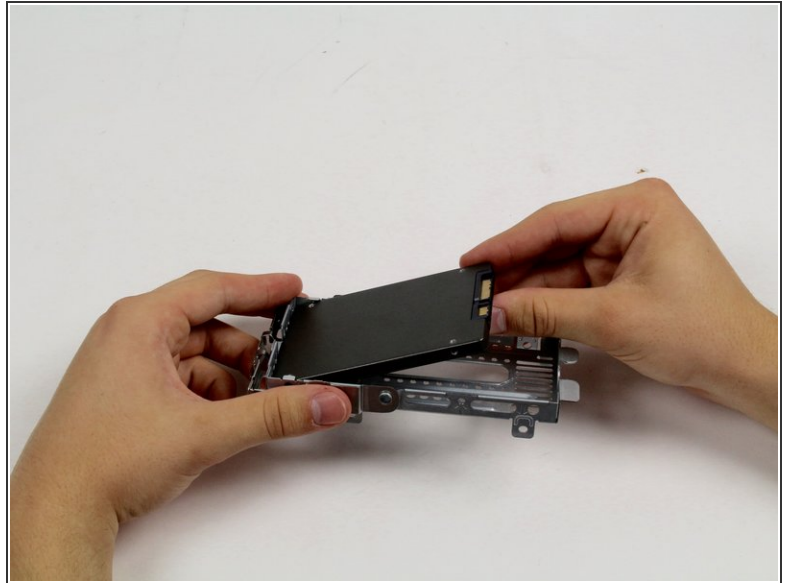
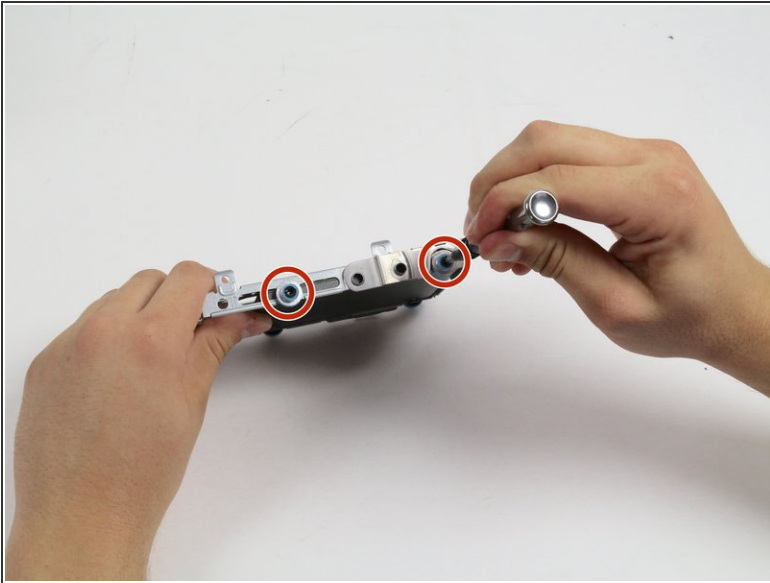
- Place the computer screen down on a flat surface.
- Push the two locking latches to the unlocked position.
- Push the cover toward the top of the computer and lift up.

Step 2



- Grasp the handle on the hard drive cage to the left of the stand. It is marked with green.
- Pull the handle up, allowing the entire cage to slide toward the outward edge of the computer.
- Pull the entire cage up and out of the device.

Step 3



- Once the cage is out of the device, use a Torx T15 driver to unscrew the four 10mm screws keeping the drive in place. There are two screws on each side.
- Once all the screws are removed, lift the drive out of the cage.

To reassemble your device, follow these instructions in reverse order.