



DigiLand DL1010Q Front and Rear Cameras Replacement

This guide will show you how to easily replace your front and back cameras of this device

Written By: Marissa Saidy



INTRODUCTION

In this guide you should be able to:

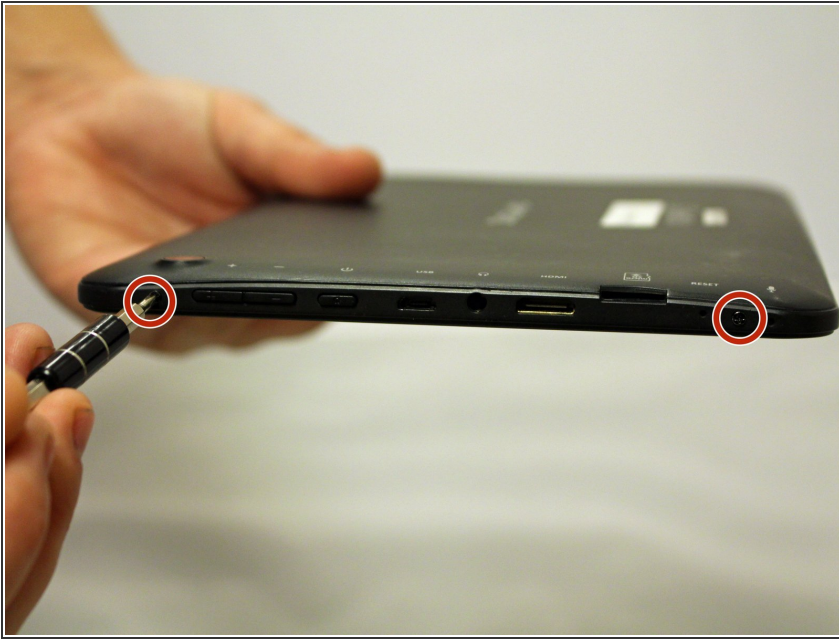
- Proficiently remove the front and back cameras
- Locate and understand how to detach a ZIF Connector



TOOLS:

- [Tweezers](#) (1)
 - [Phillips #00 Screwdriver](#) (1)
 - [iFixit Opening Tools](#) (1)
-

Step 1 — Rear Case



- With a J00 Philips head screwdriver, unscrew the two 4mm black screws located at the bottom of the device.

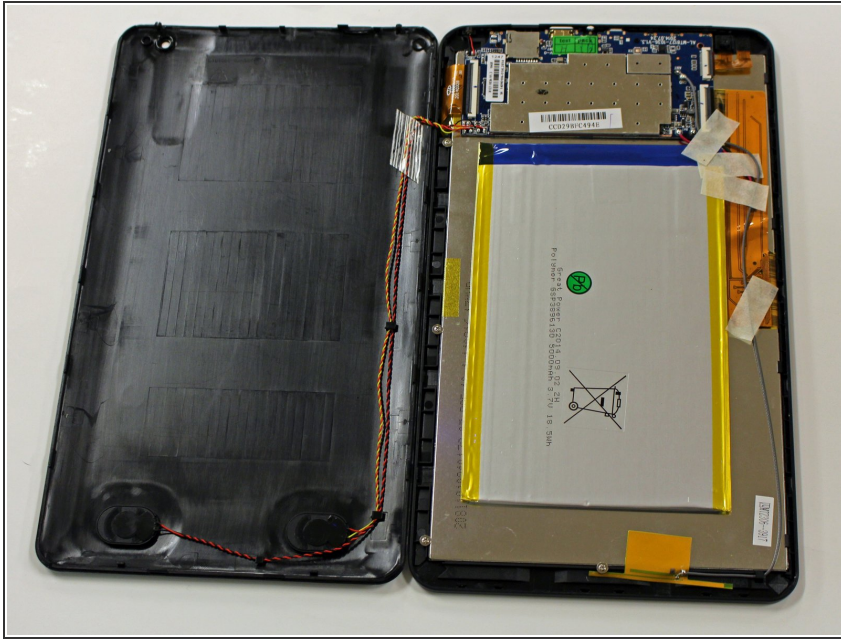
⚠ Before disassembling your device, be sure it is powered off.

Step 2



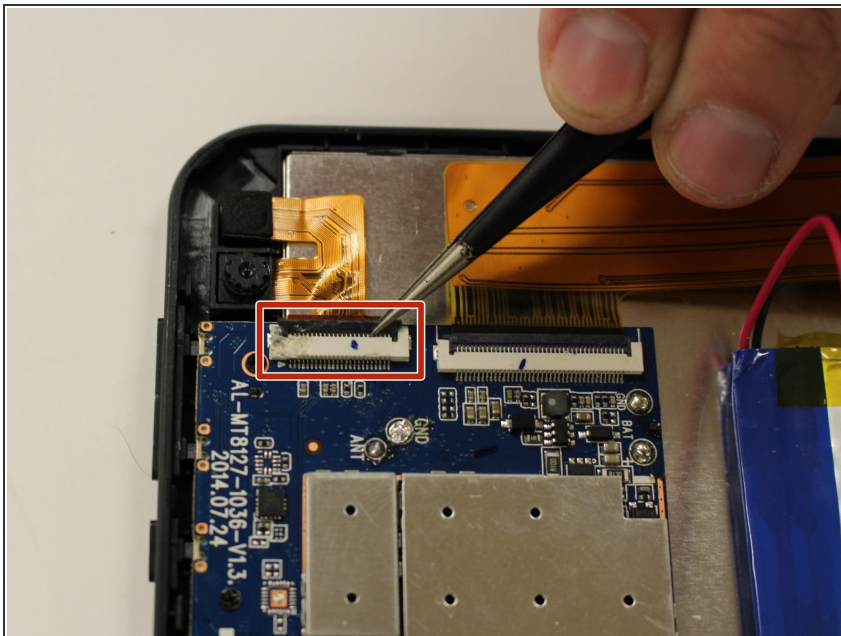
- Using a plastic opening tool, begin softly prying open device by first inserting it in between the front and back panels.
- Continue prying the edges while moving around the device's perimeter until the back can be easily removed.

Step 3



- Carefully lift back panel away from the body of the device.
- ⚠ Speaker wires are connected to both the front and back panel.

Step 4 — Front and Rear Cameras



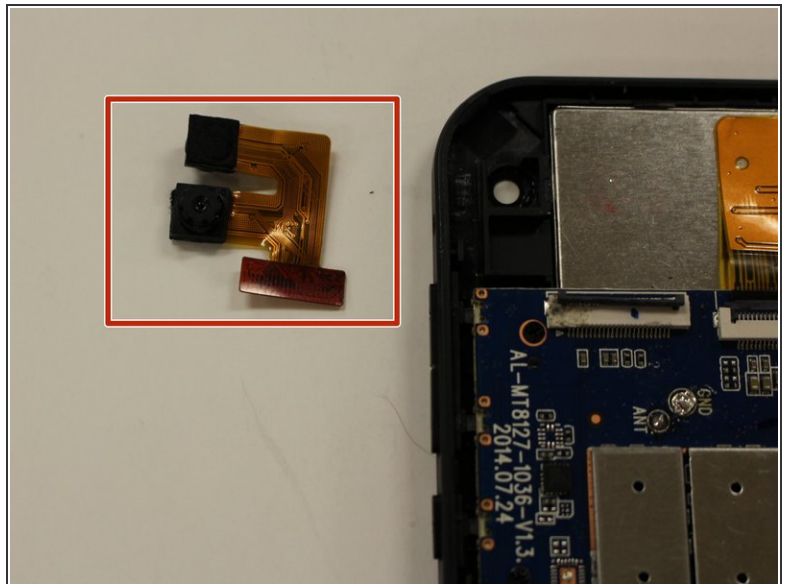
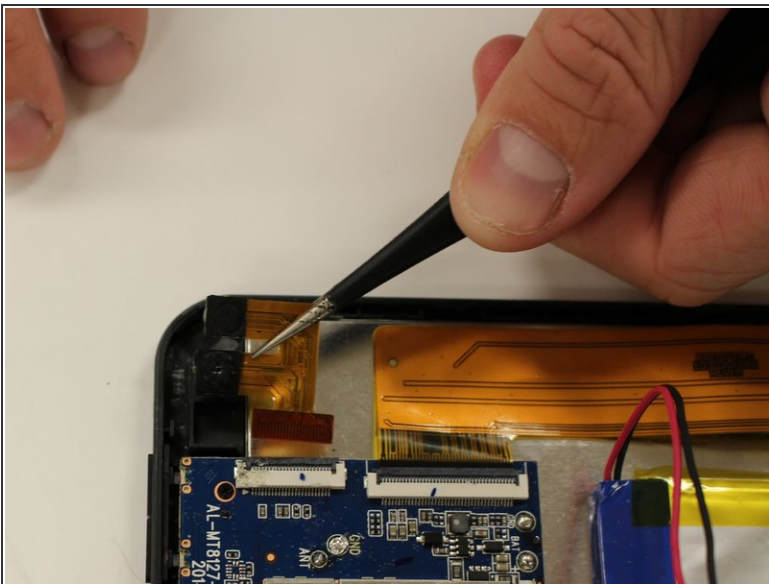
- Begin by grabbing the tweezers and locating the ZIF (zero Insertion Force) connector.

Step 5



- Insert the tweezers into the black part of the ZIF connector and lift it in an upwards motion. By lifting the connection, you will see it will free the circuit strip.

Step 6



- Take the tweezers and carefully grab the camera closest to the logic board and then pulling in an upwards motion will release both cameras from the device.
- Set the cameras aside.

To reassemble your device, follow these instructions in reverse order.