



DigiLand DL1010Q Rear Case Replacement

This guide is used as a prerequisite for other guides for this device. Before using any other DigiLand DL1010Q guides, please follow this guide first.

Written By: Tyler Rise



INTRODUCTION

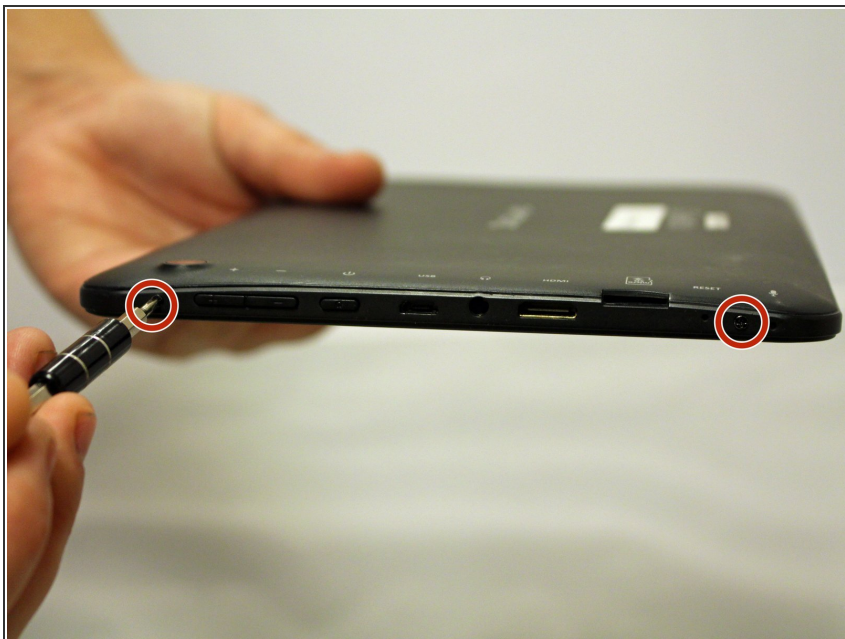
This guide will allow you to access the inside parts of this device



TOOLS:

- [iFixit Opening Tools](#) (1)
 - [Phillips #00 Screwdriver](#) (1)
-

Step 1 — Rear Case



- With a J00 Philips head screwdriver, unscrew the two 4mm black screws located at the bottom of the device.

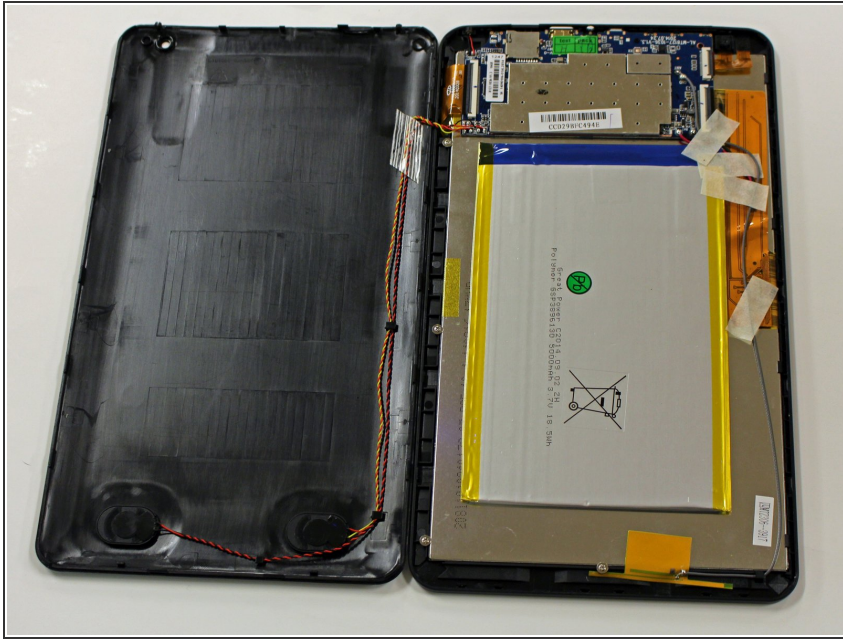
⚠ Before disassembling your device, be sure it is powered off.

Step 2



- Using a plastic opening tool, begin softly prying open device by first inserting it in between the front and back panels.
- Continue prying the edges while moving around the device's perimeter until the back can be easily removed.

Step 3



- Carefully lift back panel away from the body of the device.
- ⚠ Speaker wires are connected to both the front and back panel.

To reassemble your device, follow these instructions in reverse order.