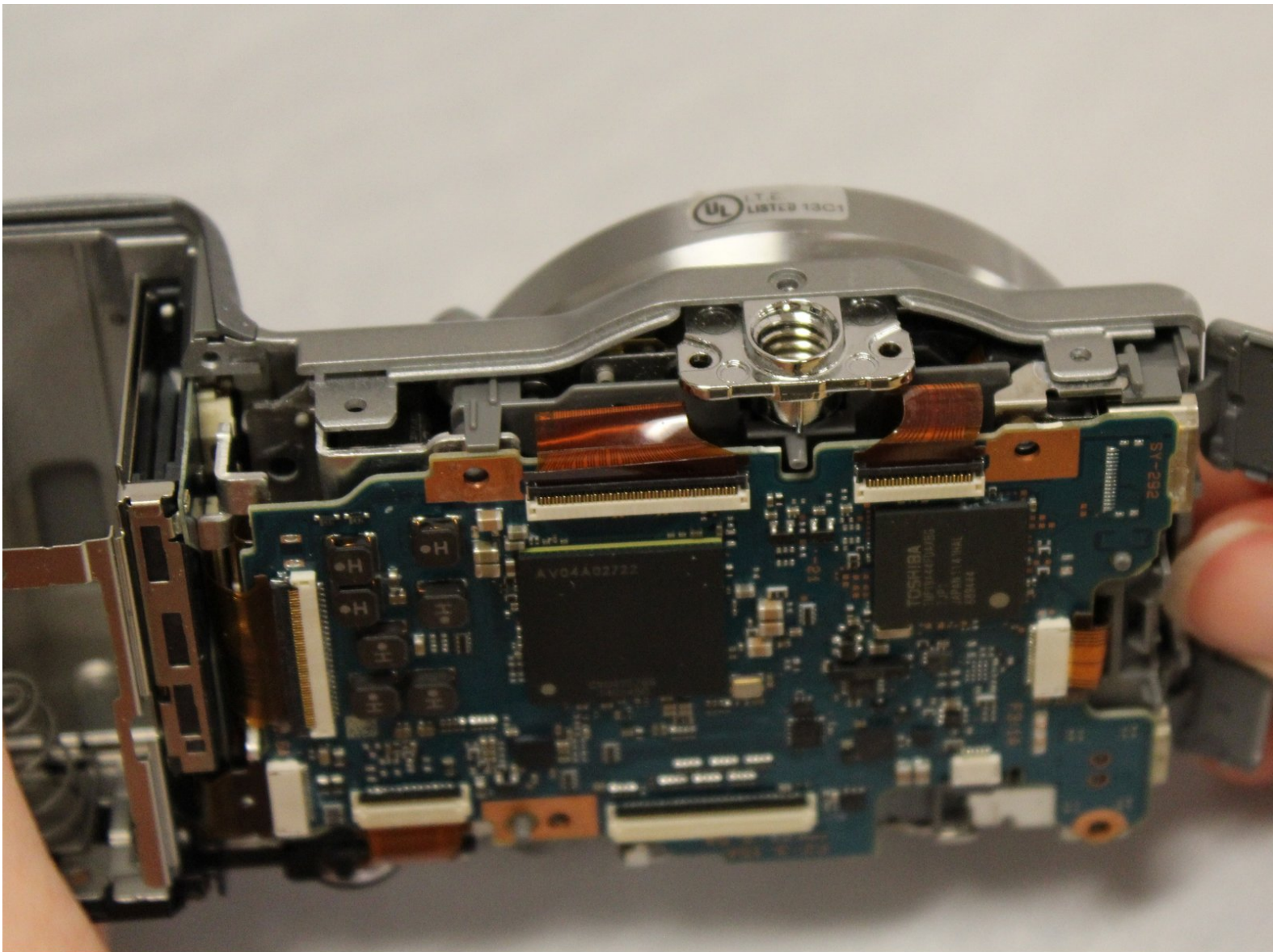




# Sony Alpha NEX-5N Motherboard Replacement

This guide will lead you through the steps necessary in the replacement of the motherboard when it stops functioning properly.

Written By: Andrea Tobar



---

# INTRODUCTION

A guide to show the replacement procedure of the motherboard.

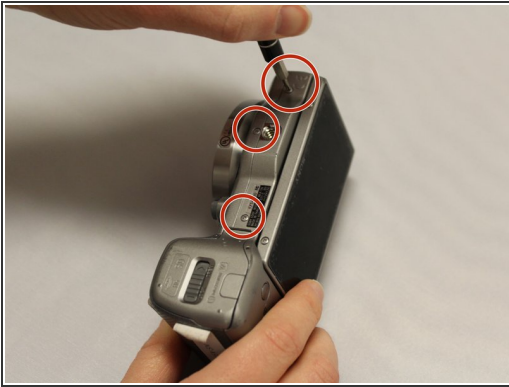
---



## TOOLS:

- [Phillips #0 Screwdriver](#) (1)
  - [Phillips #000 Screwdriver](#) (1)
  - [Tweezers](#) (1)
  - [iFixit Opening Tools](#) (1)
-

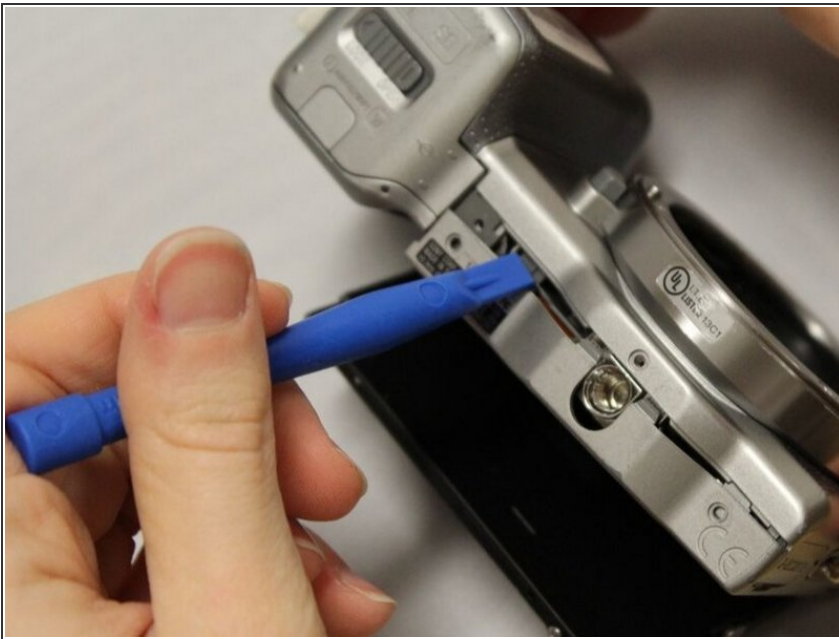
## Step 1 — Motherboard



- Unscrew the 3 silver 1.2 mm Phillips #000 screws from the bottom of the camera.

**i** This does not include the two screws in the bottom of the LCD screen panel.

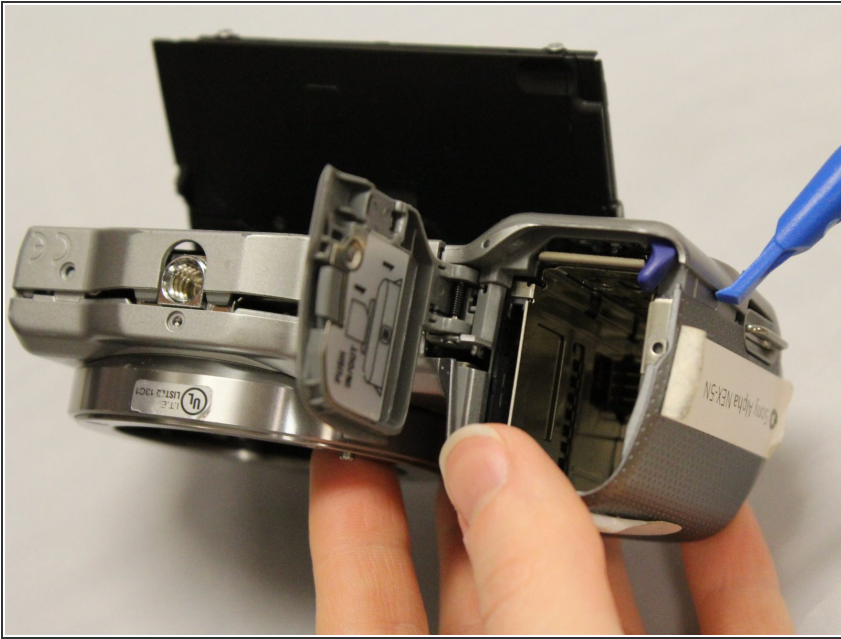
## Step 2



- On the bottom casing, locate the split along the tripod port.
  - Insert the prying tool into the split.
  - Pull the prying tool towards the LCD screen to begin separating the split.
- i** Jiggling the prying tool may be necessary to open the split.



## Step 3



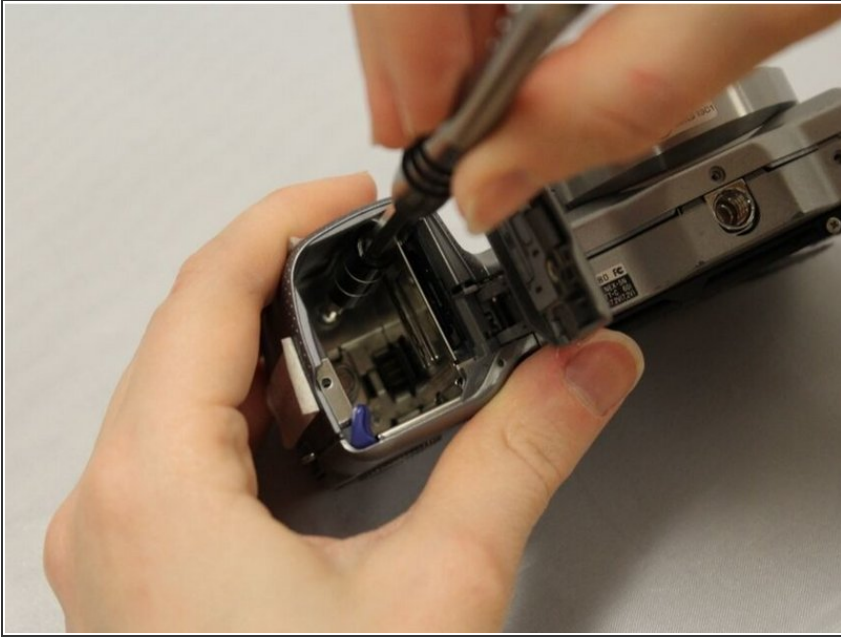
- Hold the device with the lens facing you, and grasp the battery compartment.
  - Locate the split on the side of the battery compartment.
  - Locate the split and insert the prying tool.
  - Pull the prying tool towards the LCD screen to begin separating the split.
- i** Jiggling the prying tool may be necessary to open the split.

## Step 4



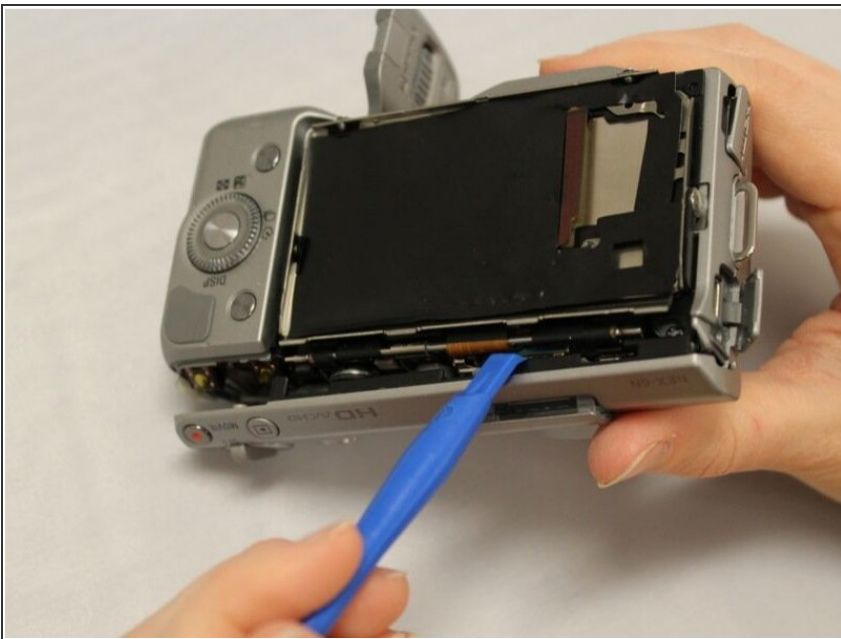
- Locate the charging port.
- Unscrew the silver 3.5 mm Phillips #0 screw next to the port.

## Step 5



- Open the battery compartment.
- Unscrew the 2 silver 3.5 mm Phillips #0 screws found at the inside bottom of the battery port.

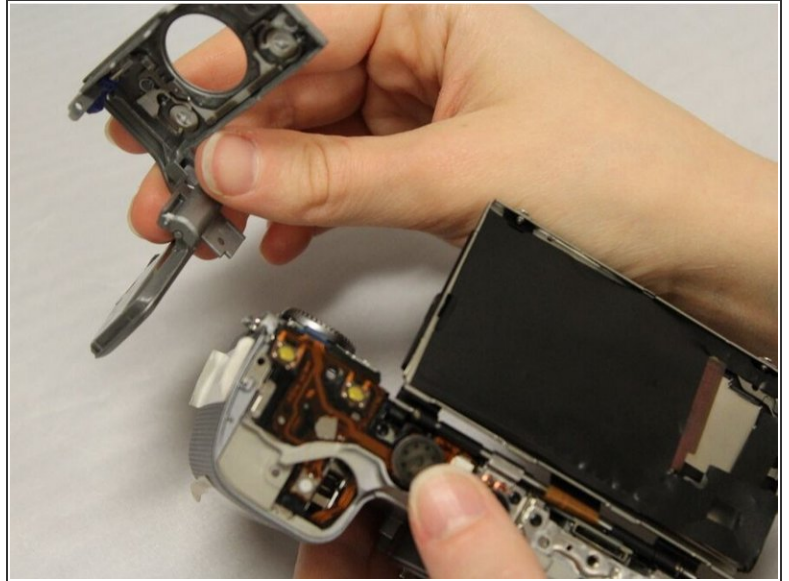
## Step 6



- Insert prying tool in the split between the top panel (where you find the movie button) and the LCD screen.
- Jiggle the prying tool and pull the tool away from the device.

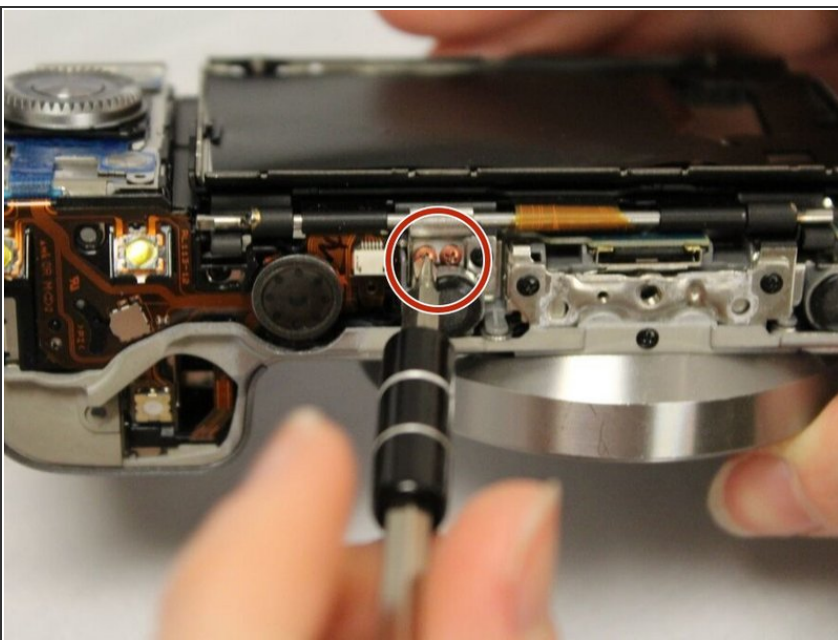
**i** The panel will fall off immediately.

## Step 7



- Unscrew the silver 3.5 mm Phillips #0 screw, visible on the left top edge when looking at the face of the device.
- ⓘ The dark gray panel that surrounds the shutter button and covers the battery compartment will be loose.

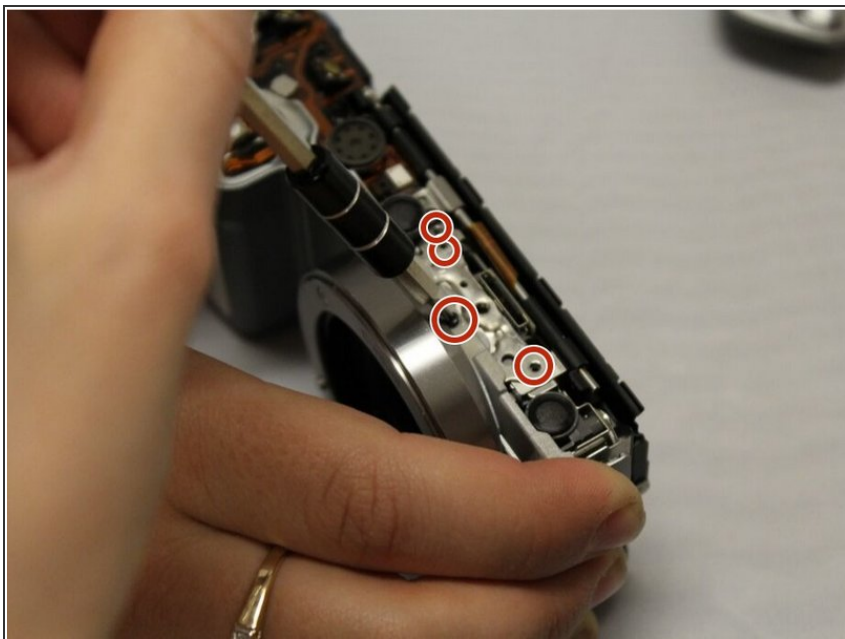
## Step 8



- Locate the middle top of the device.
- Unscrew 2 copper 1.2 mm Phillips #000 screws.

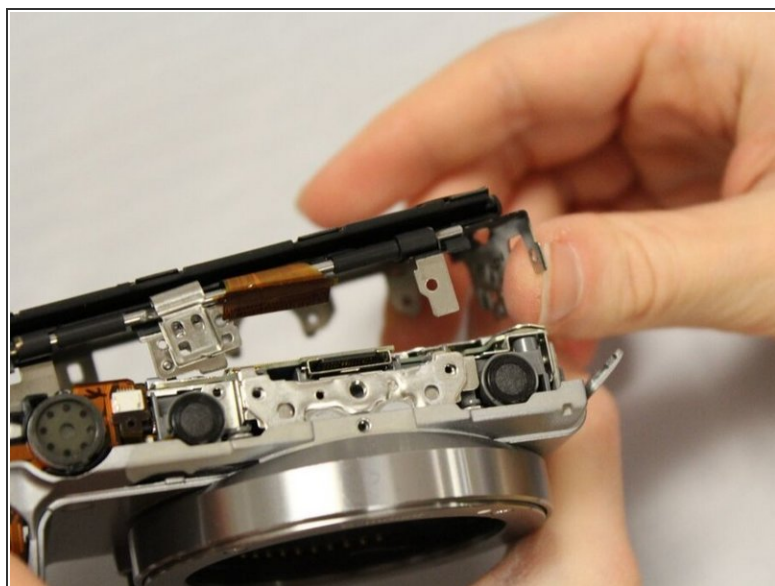


## Step 9



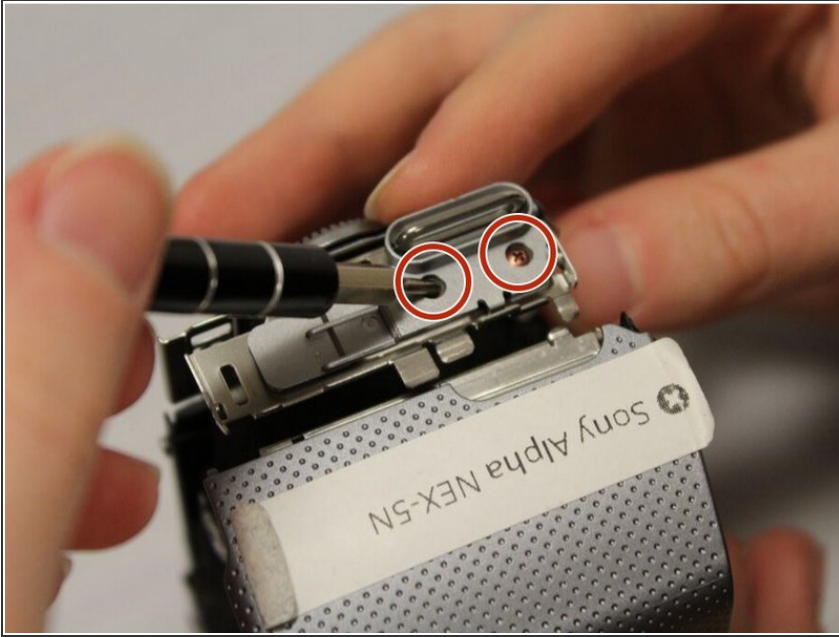
- To the right of where you unscrewed the copper screws, unscrew 4 black 1.2 mm Phillips #000 screws.

## Step 10



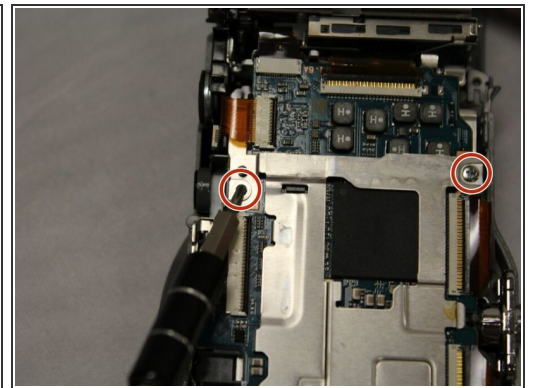
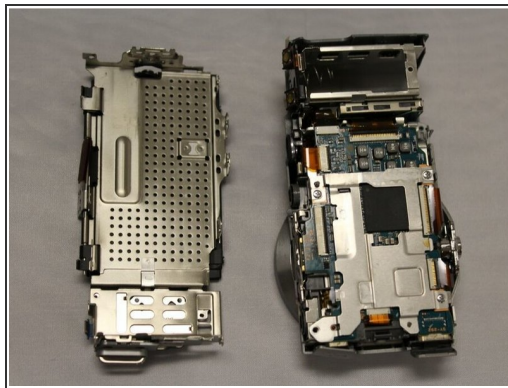
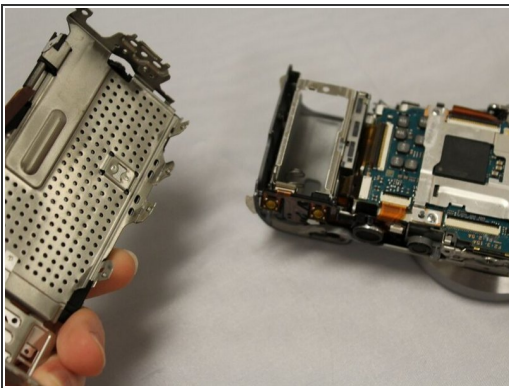
- Locate the tripod port.
- Unscrew 2 black 1.2 mm Phillips #000 screws, one on each side of the tripod port.
- Pull the section holding the LCD screen away from the device body.

## Step 11



- Unscrew 2 copper 1.2 mm Phillips #000 screws underneath the lanyard loop (near the control wheel).

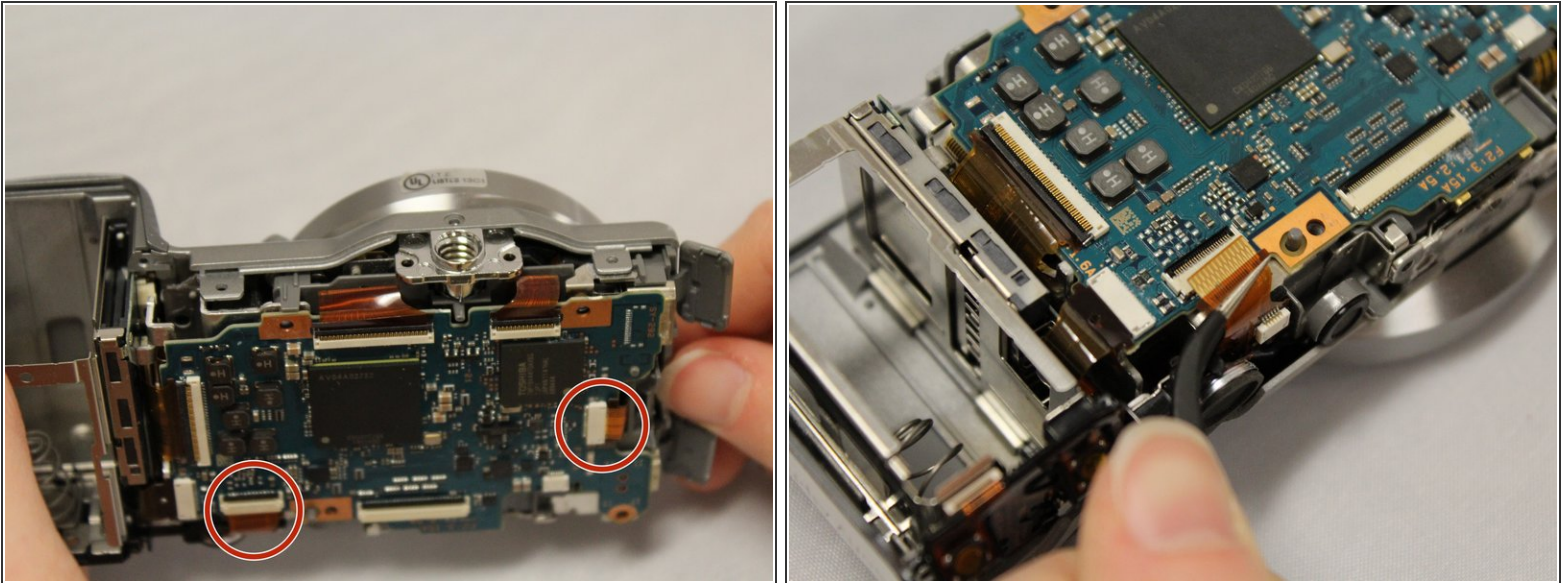
## Step 12



- Pull off the metal back from the device body.
- Locate a thin metal piece on top of the motherboard, and unscrew 4 silver 1.2 mm Phillips #000 screws in the corners of the metal piece.
- Underneath, you will locate the motherboard.
- The tripod piece will be loose. Take the piece from the device and set it off to the side.

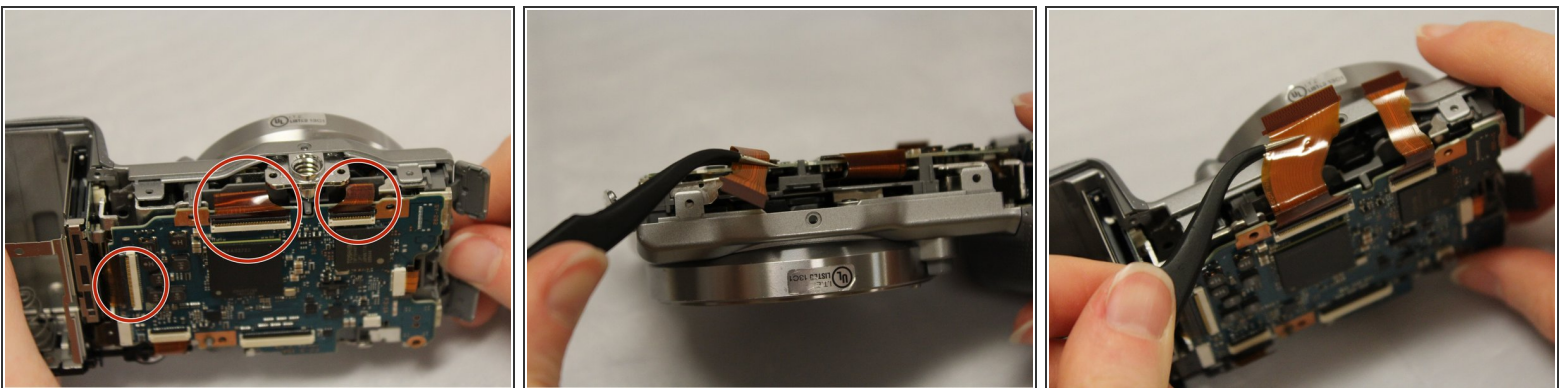


## Step 13



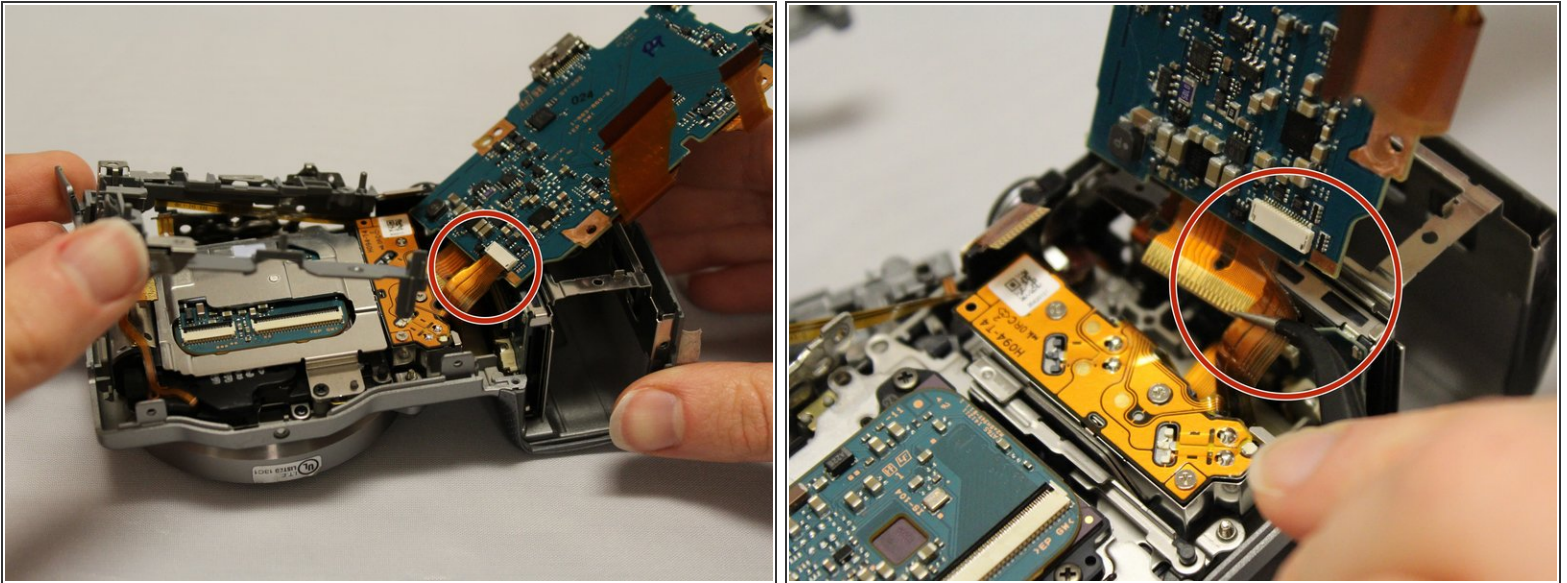
- i The top and bottom of the device has ZIF ribbon cable connectors holding the motherboard in place.
- Flip up the white retaining tabs, and utilize tweezer to, pull out the 2 thin ribbon cables, located on top of the motherboard.
- i Do not touch the ribbons with bare hands.

## Step 14



- Locate 3 thick ribbon cables on the bottom, and flip up the white retaining tabs. Pull out the remaining ribbon cables, utilizing tweezers.

## Step 15



- Lift the gray plastic camera piece surrounding the motherboard up.
  - Leave the long, thin ribbon cable that runs along the gray piece attached. It is not necessary to detach.
- Lift up the motherboard to reveal one final thin ribbon cable connected to a white retaining tab underneath the motherboard.
  - Flip up the white retaining tab, and utilize tweezers to pull out the final thin ribbon cable.

To reassemble your device, follow these instructions in reverse order.