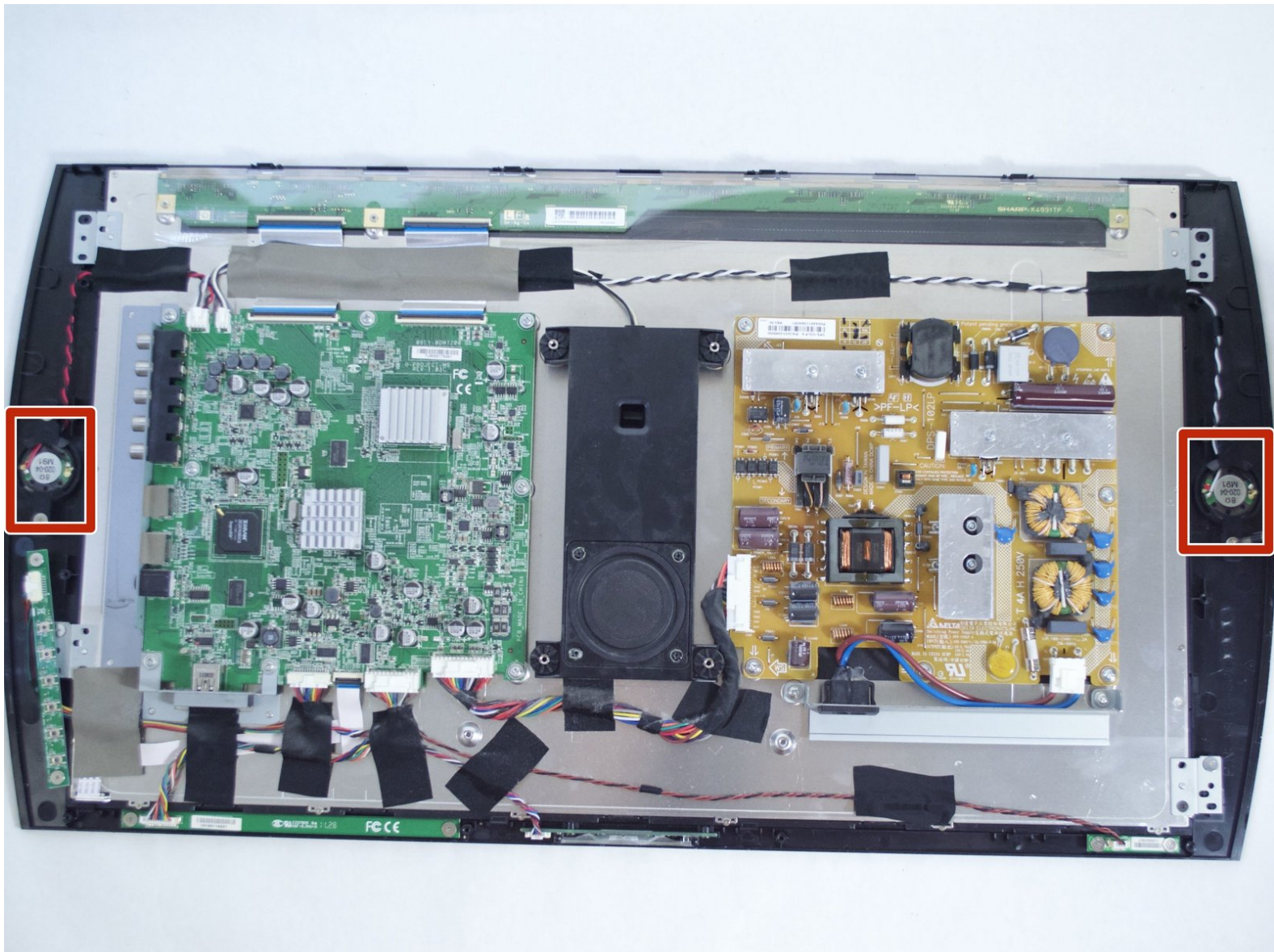




Sony PlayStation 3D Display Side Speakers Replacement

This guide will show you how to replace the two side speakers of the Playstation 3D Display.

Written By: viharim



INTRODUCTION

Released November 13, 2011, this is the only model ever released. It can be disassembled with screwdrivers and a small amount of prying. Model # CECH-ZED1U



TOOLS:

- [Metal Spudger](#) (1)
- [Phillips #2 Screwdriver](#) (1)
- [iFixit Opening Tools](#) (1)



PARTS:

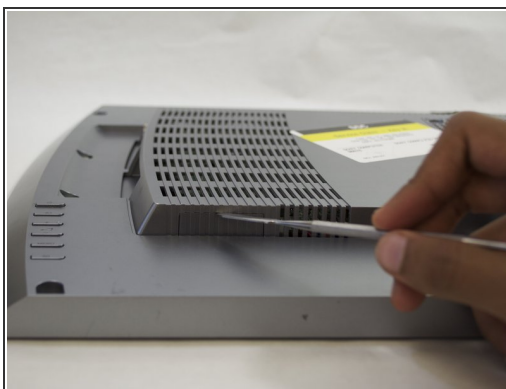
- [PlayStation 3D Speaker Assembly](#) (1)

Step 1 — Rear Case



- Remove the base by pushing in the button and sliding out the unit.

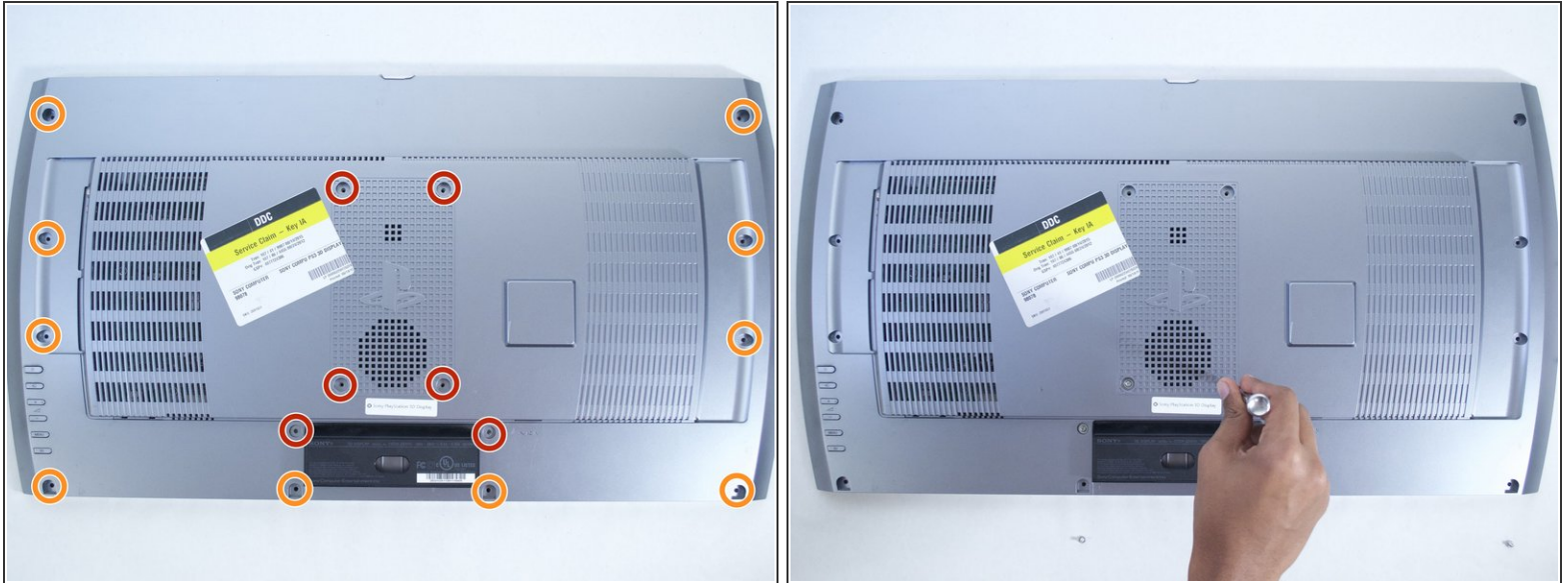
Step 2



- Remove USB port cover from back plate with a metal spudger.

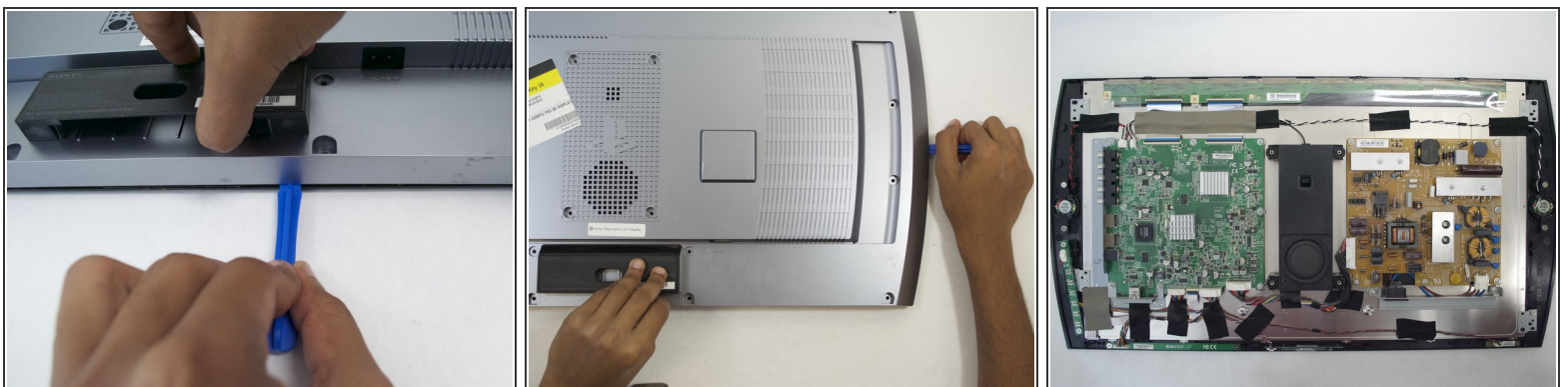
i This will prevent the cover from falling under the back plate once it is removed.

Step 3



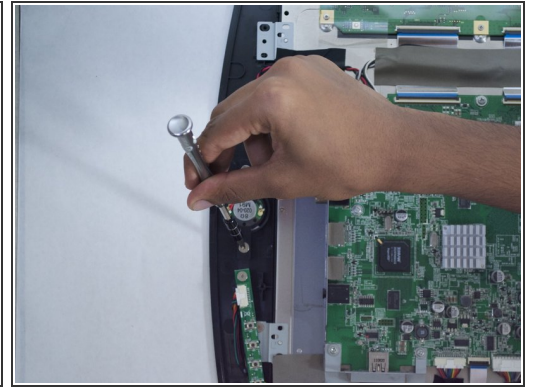
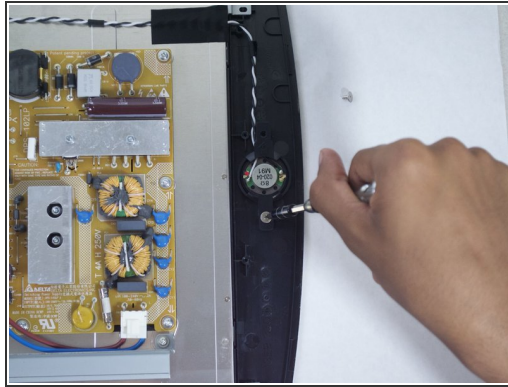
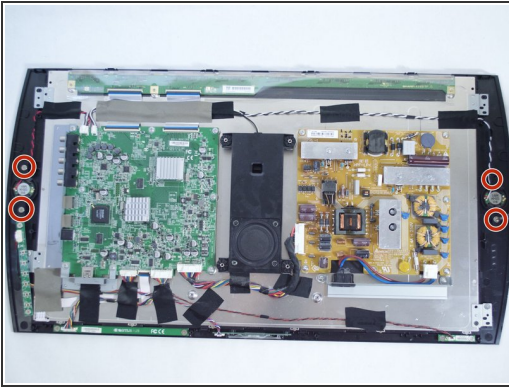
- With the Phillips #02 screwdriver, remove the six 6 mm length x 6 mm head screws from the back plate.
- With the Phillips #02 screwdriver, remove the ten 6 mm length x 8 mm head screws from the back plate.
- ⓘ These screws have different threads and need to be kept separate.

Step 4



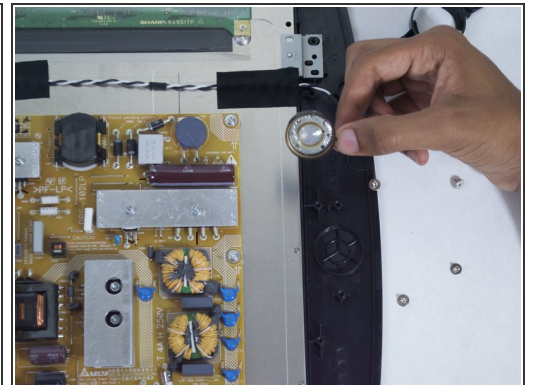
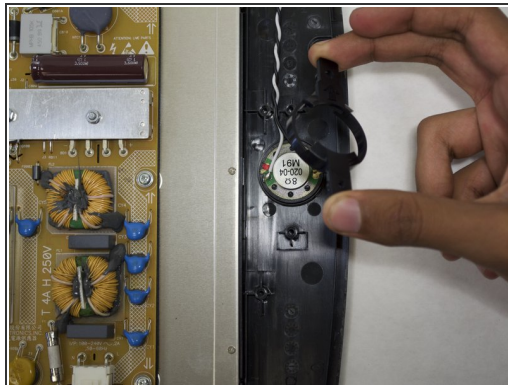
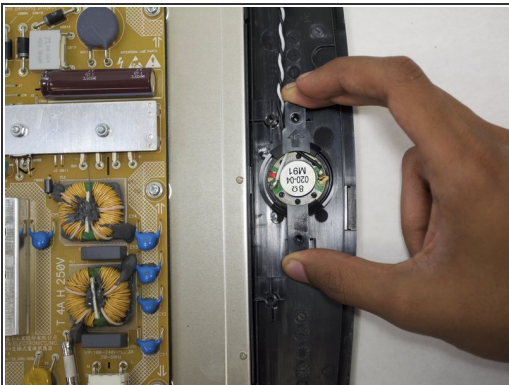
- Remove back plate with a plastic opening tool by slowly prying around the entire plate.
- ⚠ Be gentle to avoid breaking the plastic clips which hold the plate.
- Once separated the plate easily lifts off.

Step 5 — Side Speakers



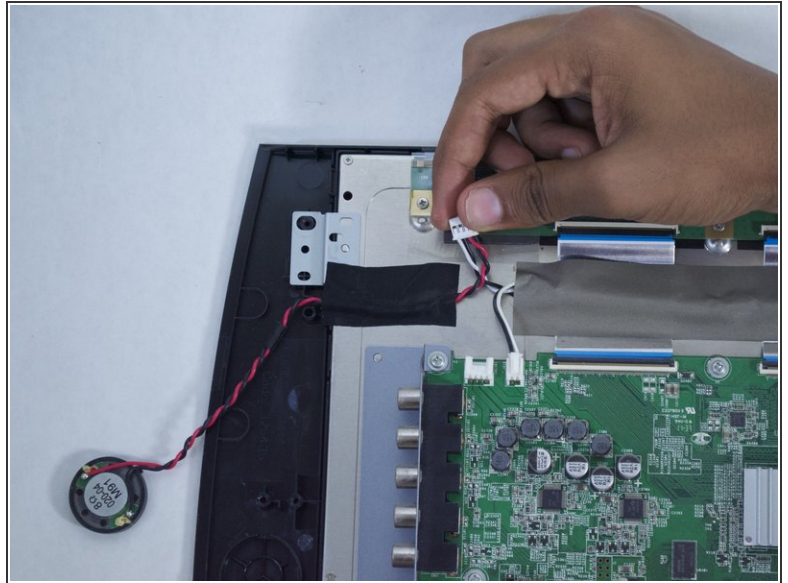
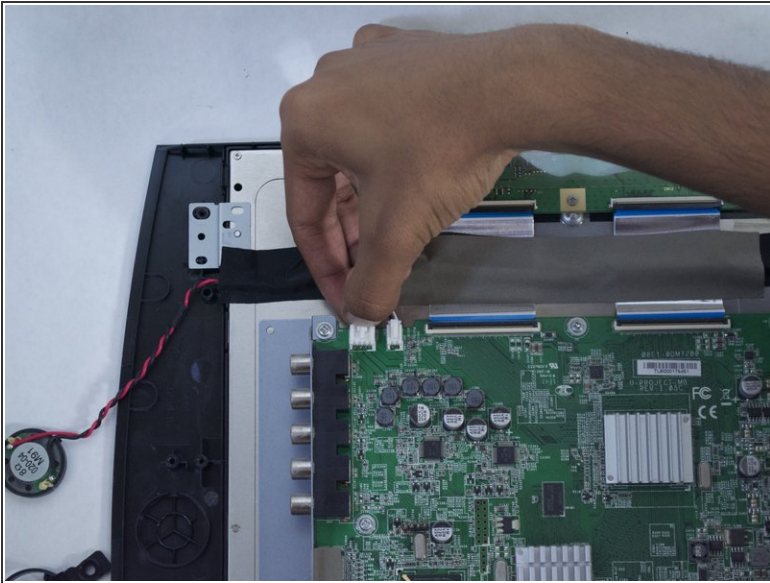
- With the Phillips #01 screwdriver, remove the four 5 mm length x 7 mm head screws from the assembly (two for each side speaker).

Step 6



- Remove the plastic plate covering the speaker.
 - ⓘ When reassembling, make sure the arrow on the plastic plate is facing up.
- Lift the speaker out of its holding tray.

Step 7



- Remove the speaker by depressing the white tab on the speaker wire connector.

To reassemble your device, follow these instructions in reverse order.