



# Sprout Channel Cubby Front Half Replacement

prerequisite only

Written By: jasen biggins

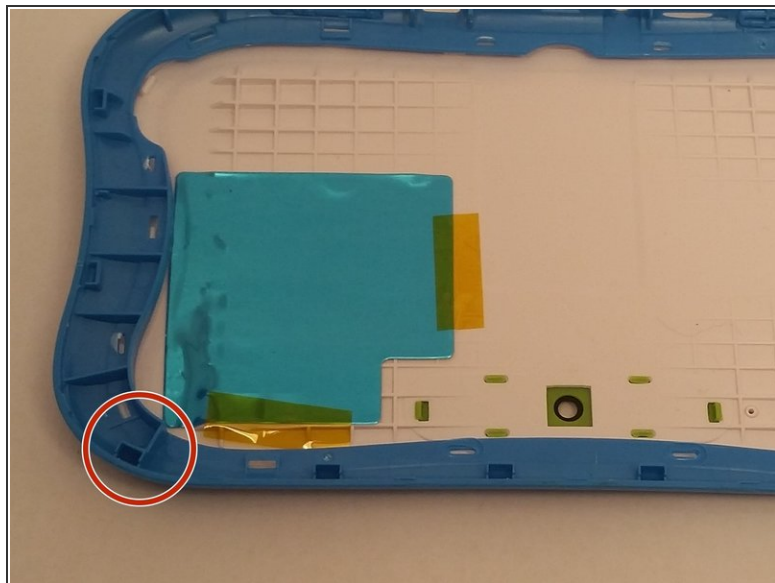




## TOOLS:

- [iFixit Opening Tools](#) (1)
-

## Step 1 — Dissassemble the device



- Use an opening tool to push in and release sixteen small plastic clips around the edge of the case. As the clips are released, gradually pry the case apart.
- ⓘ It is easiest to start on the corners.

To reassemble your device, follow these instructions in reverse order.