



Acer Aspire E5-571 Hard Drive Replacement

If the hard drive has broken or if you are...

Written By: daniel sawyer



INTRODUCTION

If the hard drive has broken or if you are planning on putting in an SSD hard drive, this guide will show you how.



TOOLS:

Metal Spudger (1)
iFixit Opening Tool (1)
Phillips #0 Screwdriver (1)
Phillips #1 Screwdriver (1)



PARTS:

Crucial MX500 1 TB SSD (1)
Crucial MX500 250 GB SSD (1)
Crucial MX500 500 GB SSD (1)
2 TB SSD (1)

Step 1 — Battery



Make sure the laptop is shut down.

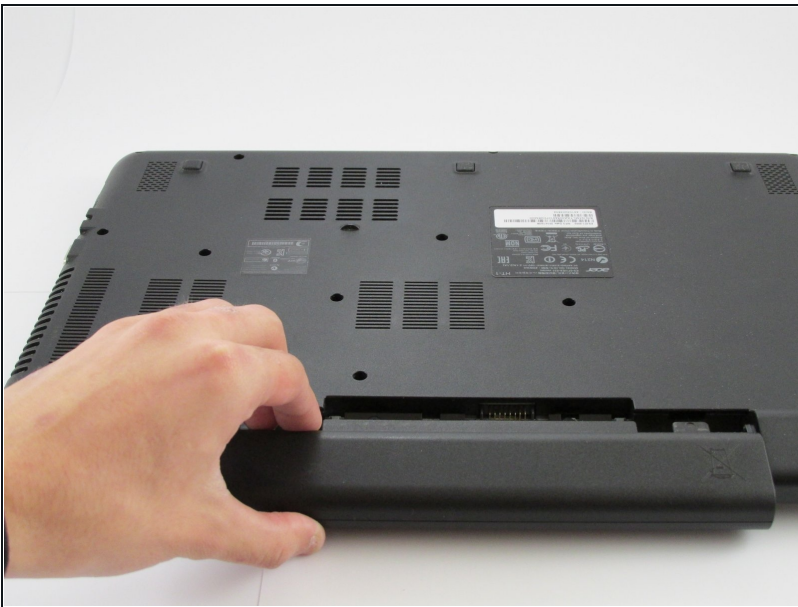
- Flip the laptop upside down. Rotate it so the battery faces you.

Step 2



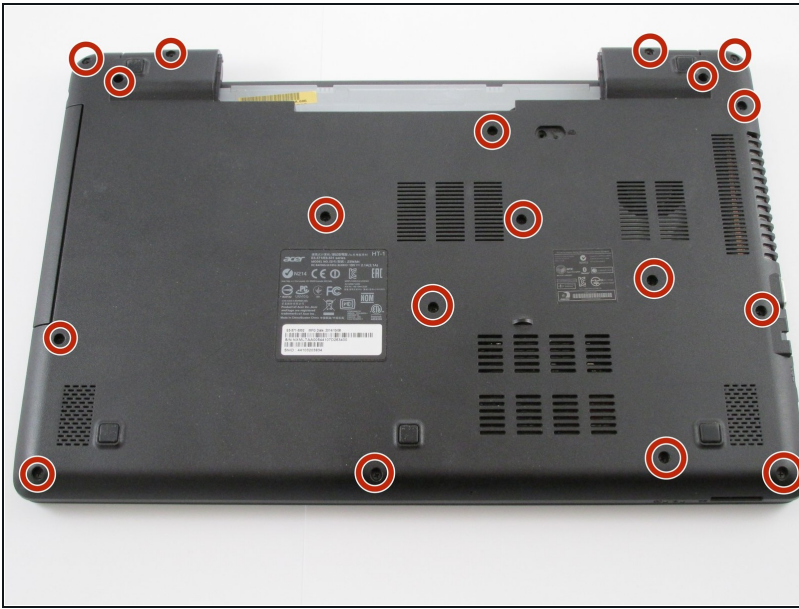
- Place the pointed end of a spudger into the battery lock. Slide the battery lock to the left using the spudger. A "click" sound will accompany the release of the battery.

Step 3



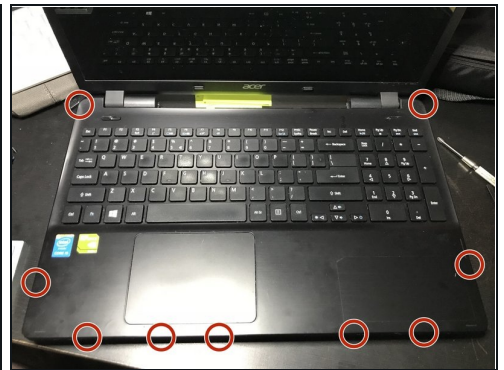
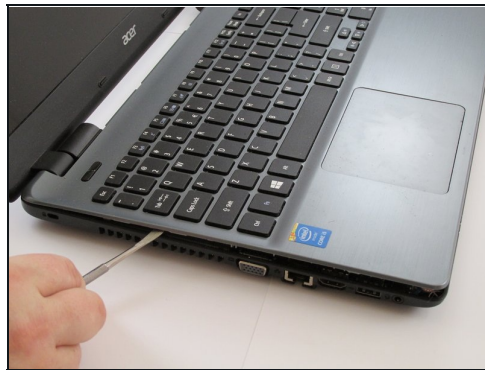
- Pull the battery towards you to remove it from the laptop.

Step 4 — Keyboard



- Remove all eighteen 8 mm screws with a Phillips #0 screwdriver.

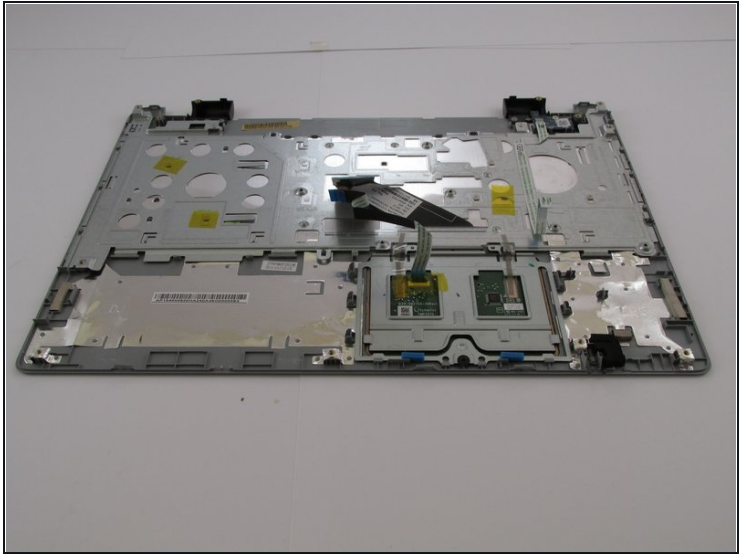
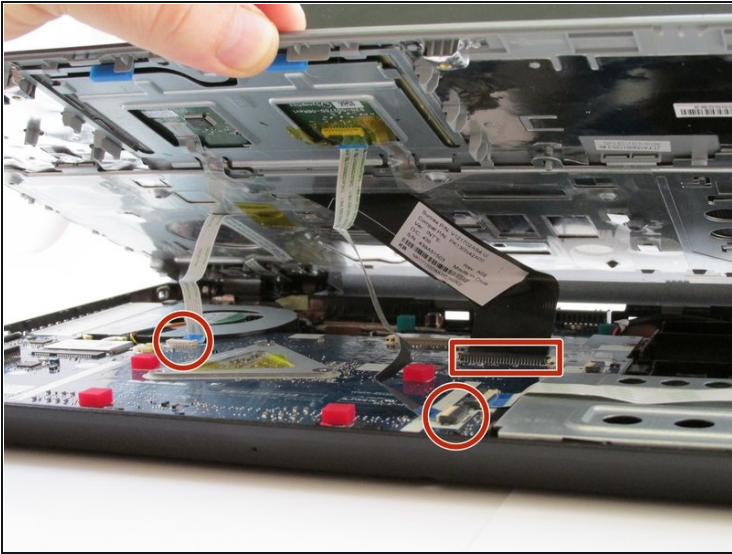
Step 5



- Carefully pry apart the clips holding the keyboard in place by moving a metal spudger along the seam.

⚠ Be careful not to break the plastic clips. Do not remove the keyboard until told to do so.

Step 6



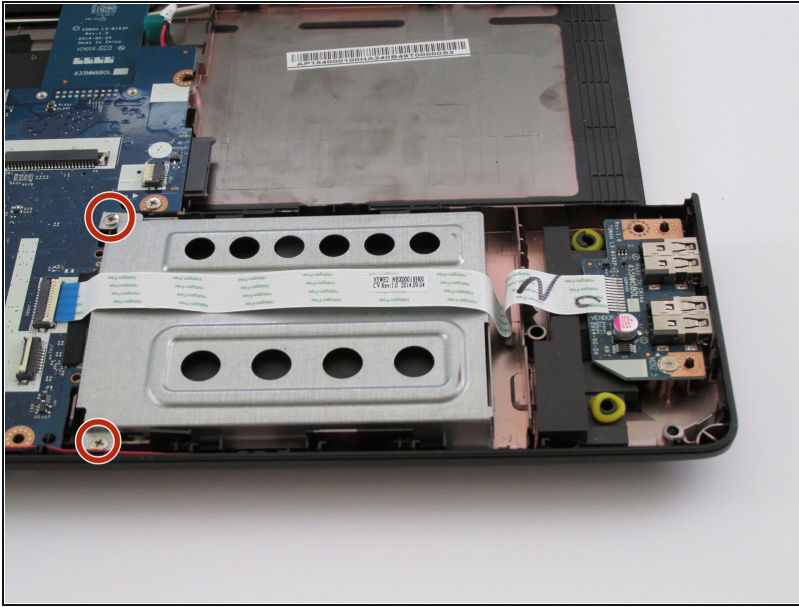
- Carefully flip up the white hinge. Then, detach the three ZIF ribbons connected to the motherboard.
- Remove the panel with the keyboard and the touchpad.

Step 7 — Hard Drive



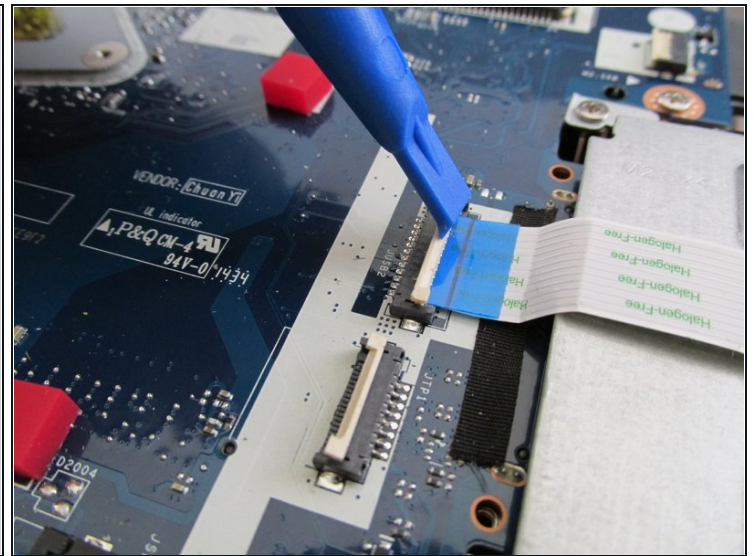
- Locate the hard drive in the metal casing.

Step 8



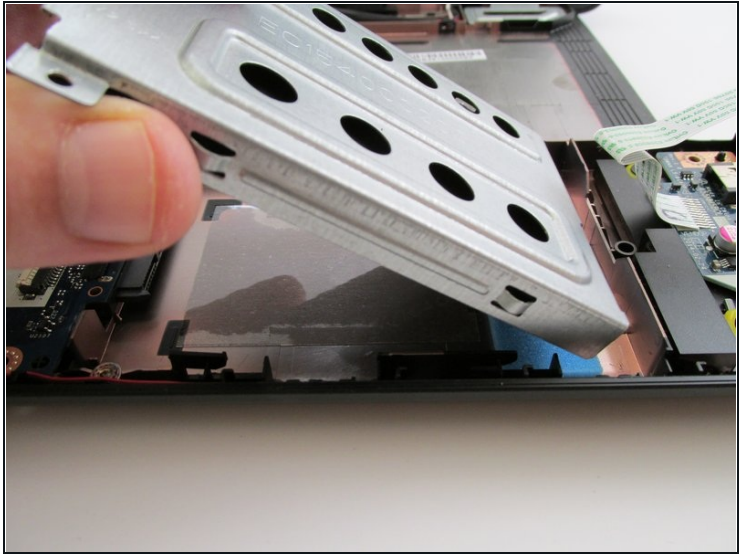
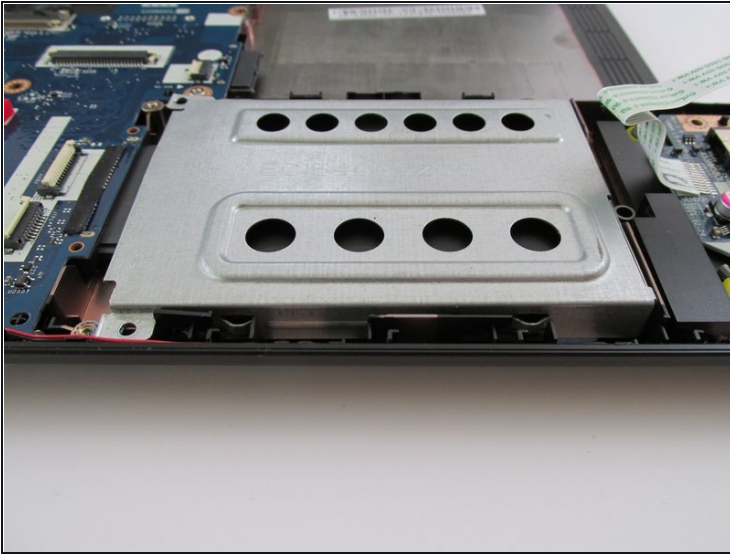
- Remove these two 4 mm Phillips #1 screws.

Step 9



- Locate this ZIF ribbon and carefully flip the white top hinge up and bend the ribbon over to the right side.

Step 10



- Slide the hard drive to the right and gently lift it off of the laptop.

Step 11



- There is one screw on each side of the metal hard drive casing you remove.
- Slide the hard drive out of the metal casing.

To reassemble your device, follow these instructions in reverse order.