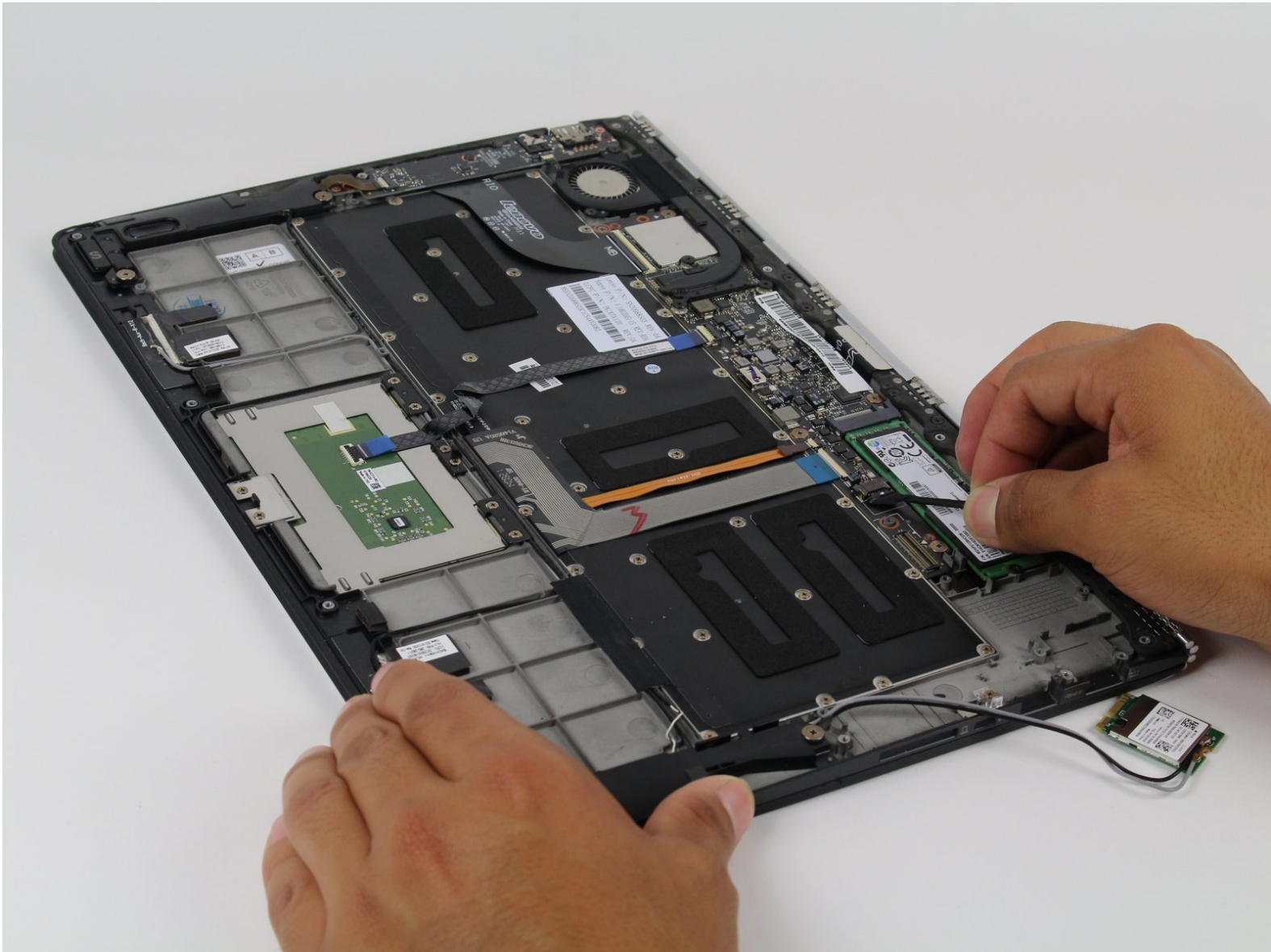




# Lenovo Yoga 3 Pro USB Ports Replacement

This guide will show you how to safely remove both USB port assemblies from the Yoga 3 Pro.

Written By: Caroline Seifert



## INTRODUCTION

Over time, the USB ports collect dust, dirt, and can become damaged for a multitude of reasons all of which ultimately lead to connectivity issues. This guide will help you remove the USB ports in order to clean or replace them.



### TOOLS:

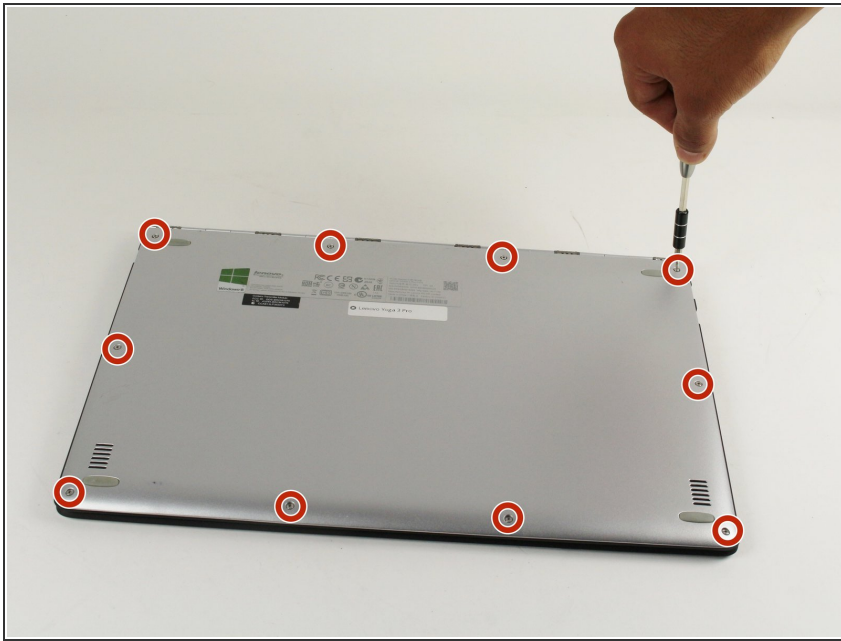
- [Phillips #00 Screwdriver](#) (1)
- [T5 Torx Screwdriver](#) (1)
- [iFixit Opening Tool](#) (1)



### PARTS:

- [Lenovo Yoga 3 Pro Right USB Daughterboard](#) (1)

## Step 1 — Battery



**⚠** Before opening your laptop, make sure it is powered off.

- Remove the ten 3.3 mm screws from the base cover using a T5 Torx screwdriver.

## Step 2



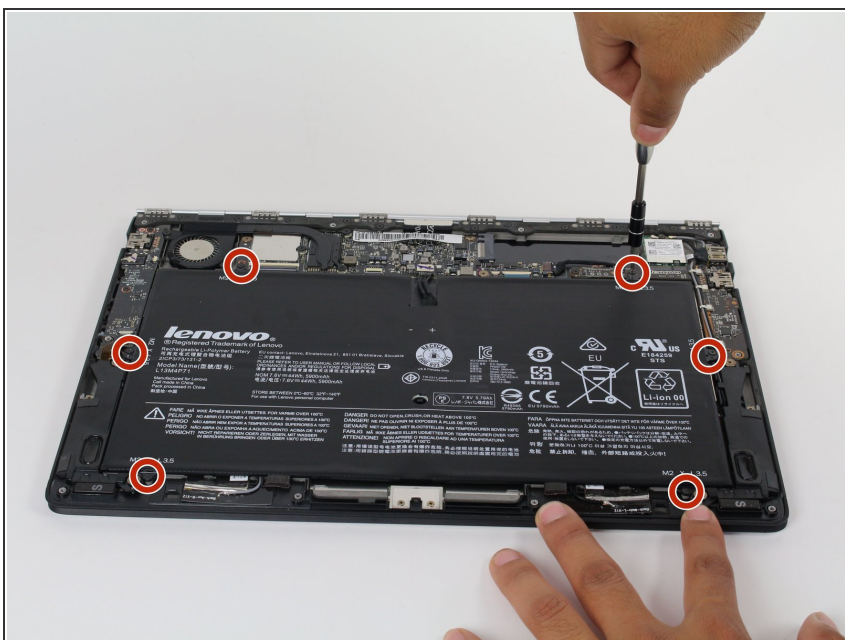
- Slide the plastic opening tool between the base cover and the frame to pry open the computer.
- Slowly go around the entire perimeter of the computer until all edges are loose.
- i** Make sure the plastic opening tool doesn't go too far into the device.

## Step 3



- Remove the panel and place it in a safe location.

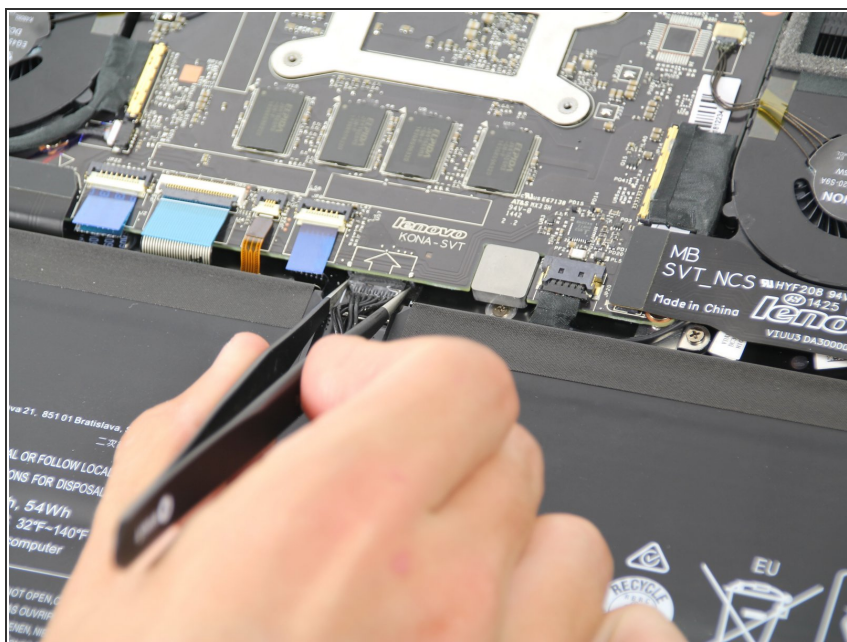
## Step 4



- Remove the six 3.5 mm screws surrounding the battery using a Phillips 00 screwdriver.

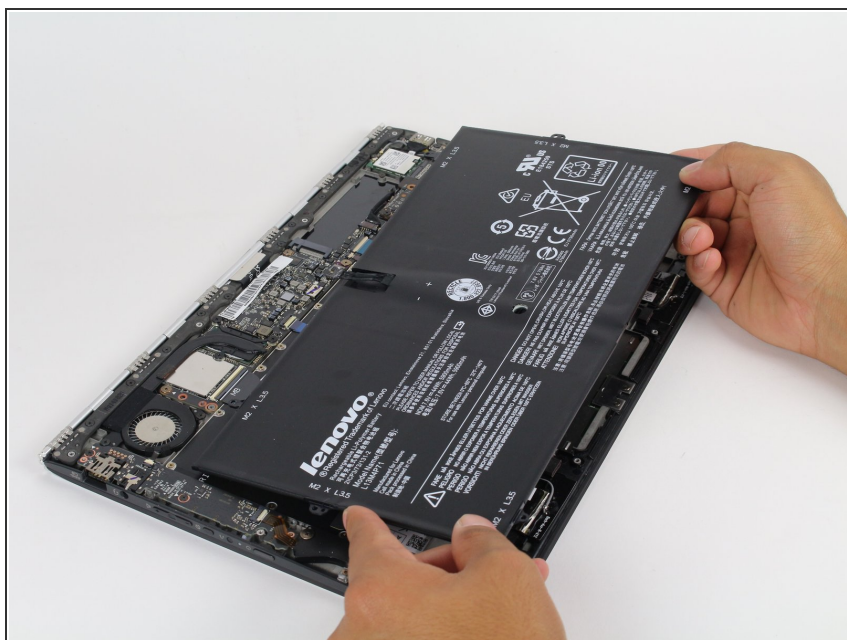


## Step 5



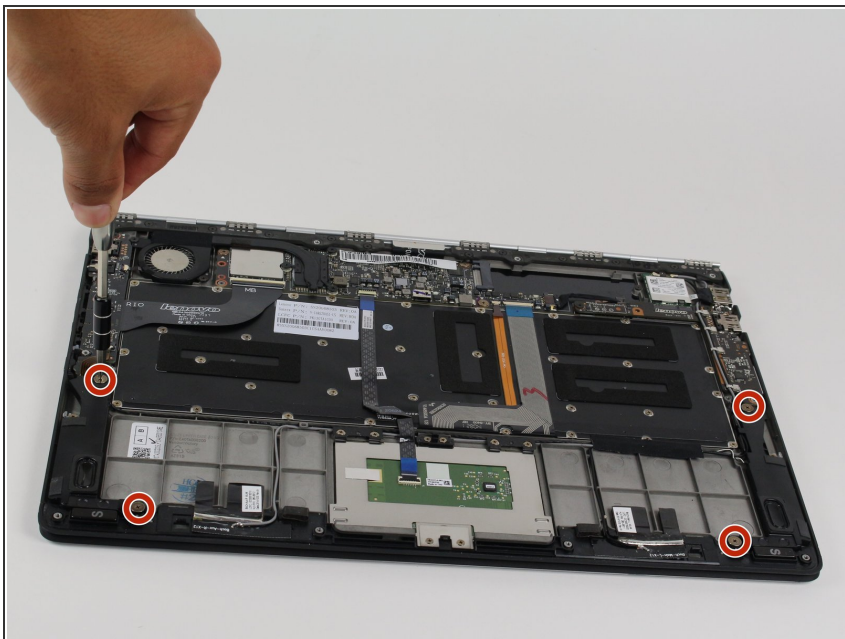
- Using either tweezers or your fingers, disconnect the black battery cable by pinching either side of the connector and pulling towards the battery.

## Step 6



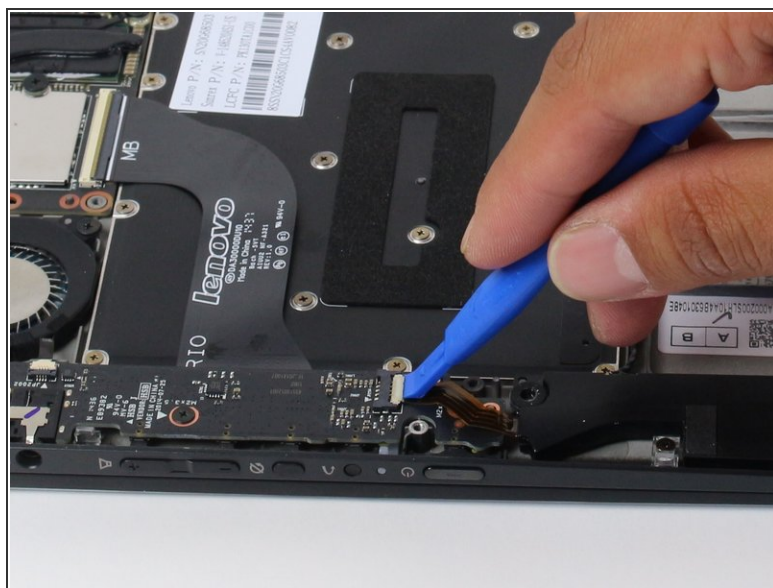
- Carefully lift and remove the battery.

## Step 7 — Speakers



- Remove the four 4 mm screws using the Phillips 00 screwdriver.

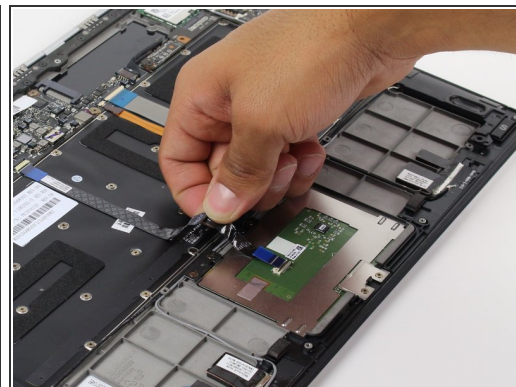
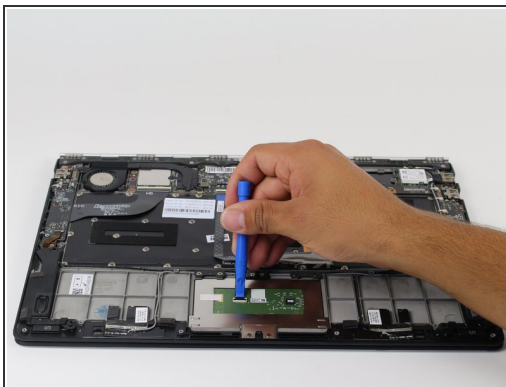
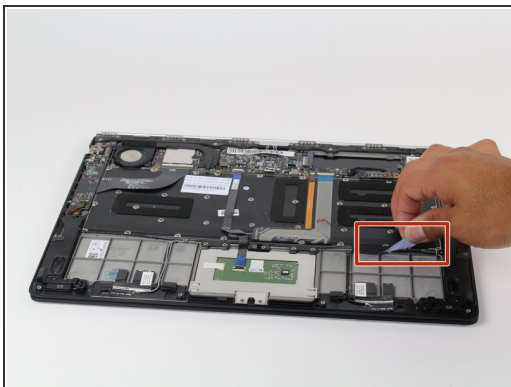
## Step 8



- Using the plastic opening tool, flip open tab as shown.

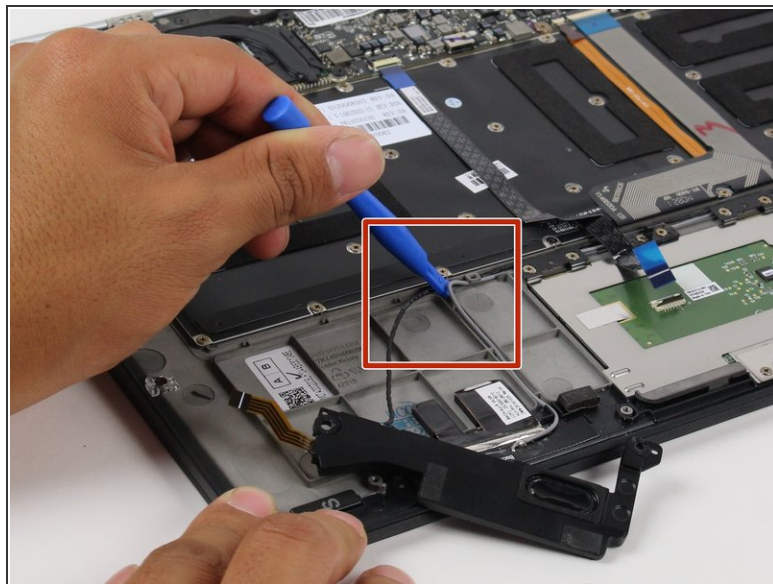
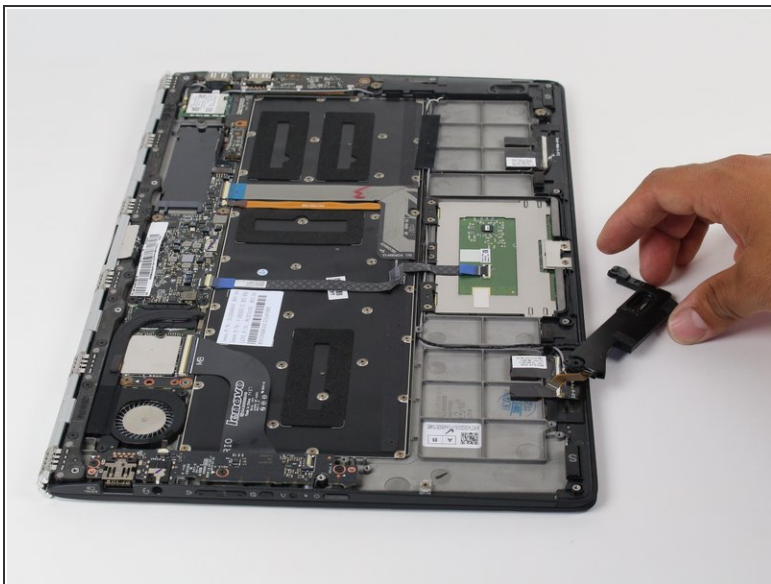


## Step 9



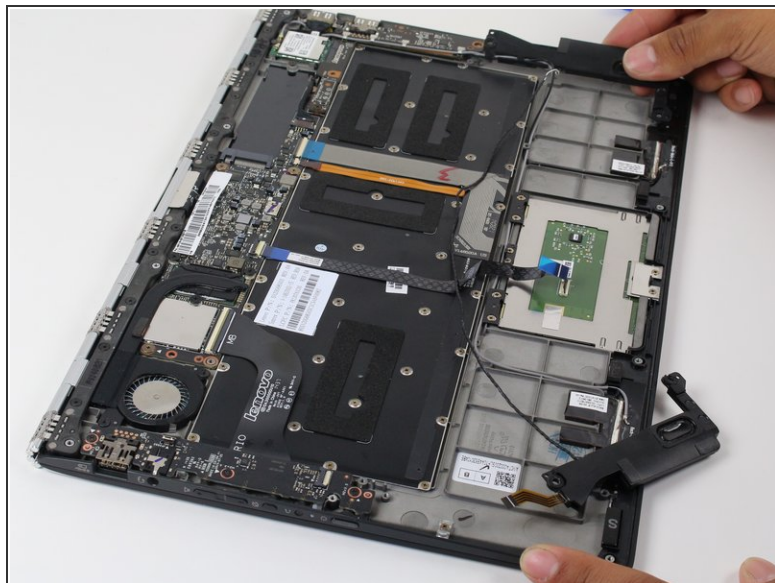
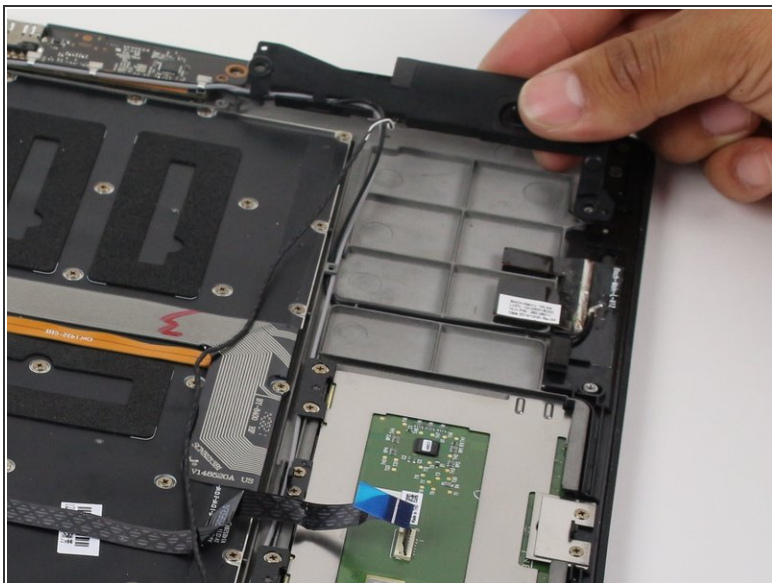
- Remove the adhesive tape.
- Flip open the ribbon connecting tab.
- ⓘ Carefully lift the ribbon connector from its adhesive.

## Step 10



- Remove the speaker and set it on the side.
- Use the plastic opening tool to remove the cables.
- ⓘ Be careful of other cables.

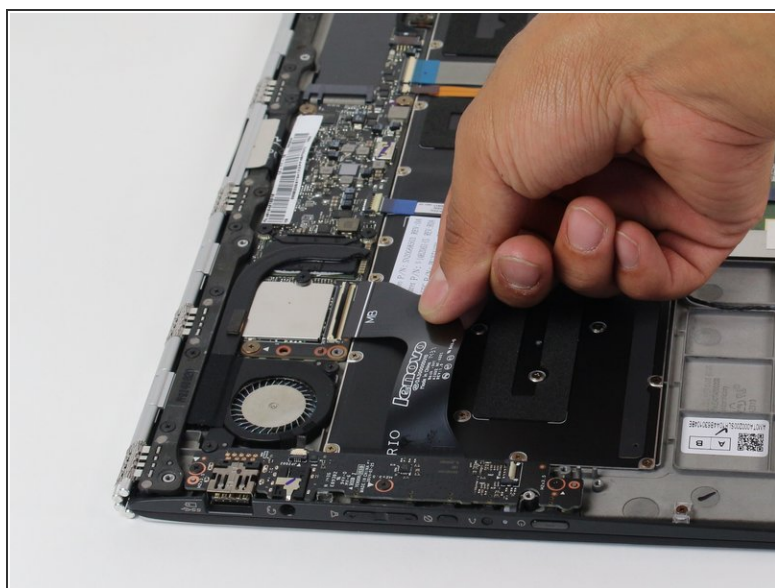
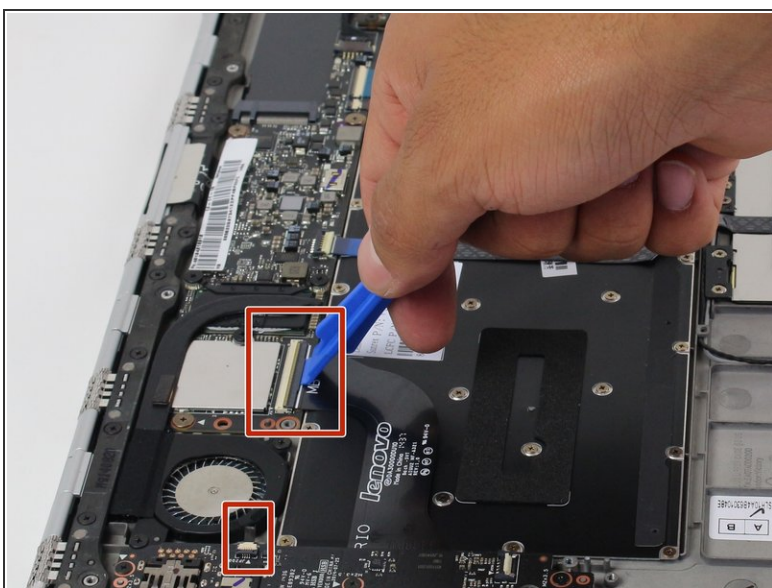
## Step 11



- Removing the other speaker by unwinding cables.

**i** Lift both speakers carefully.

## Step 12 — USB Ports

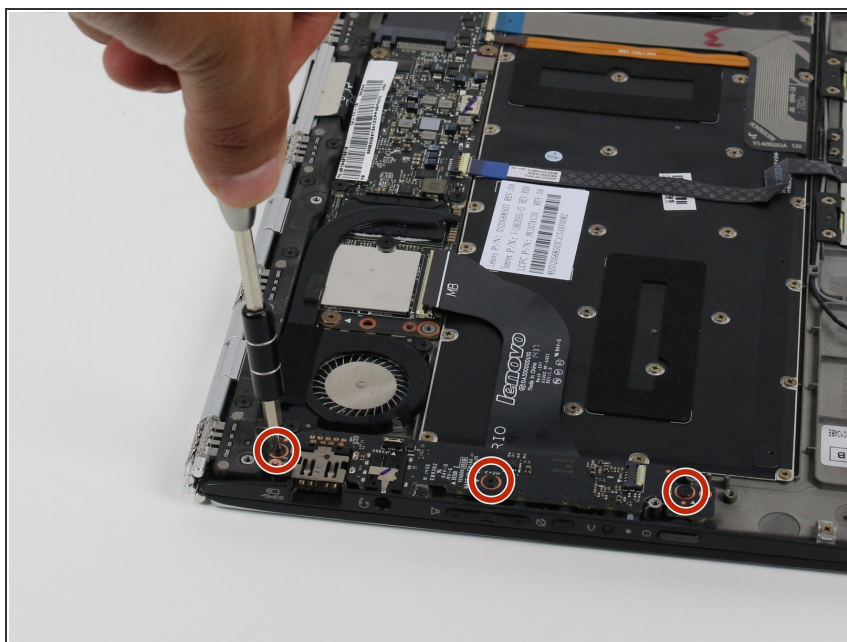


- Use the plastic opening tool to flip open the tab on each ribbon connector as shown.

**i** Ribbon connectors can be fragile, so be gentle when disconnecting them.

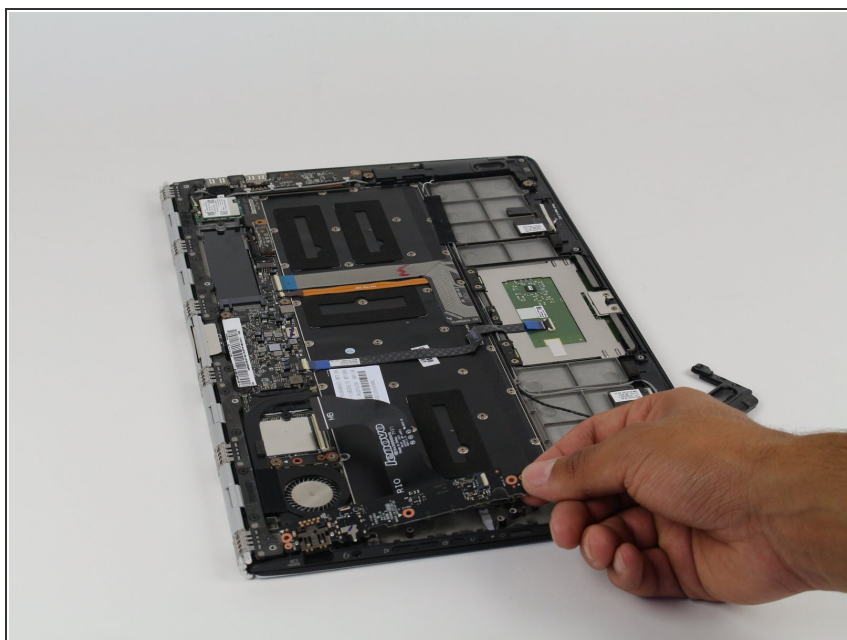


## Step 13



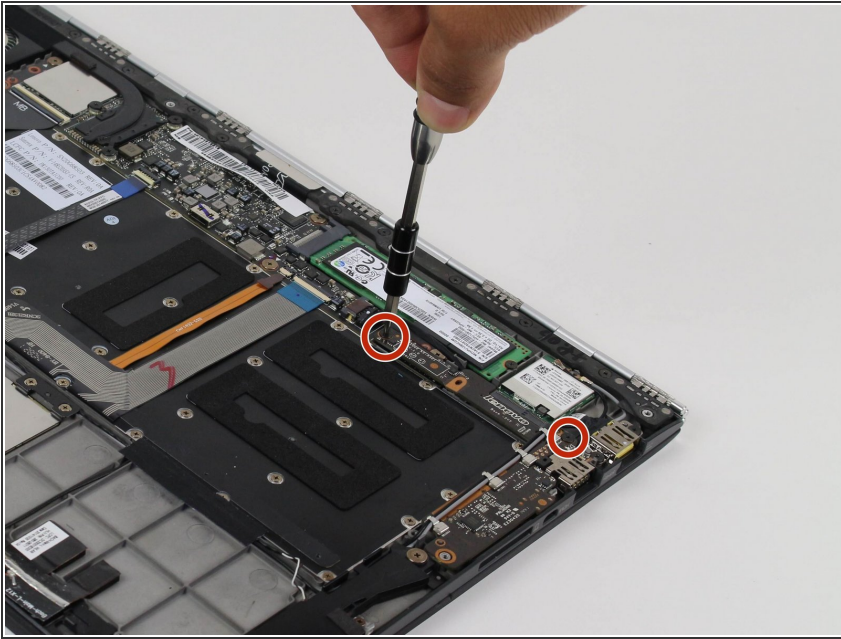
- Remove the three indicated 3.5 mm screws using the Philips 00 screwdriver.

## Step 14



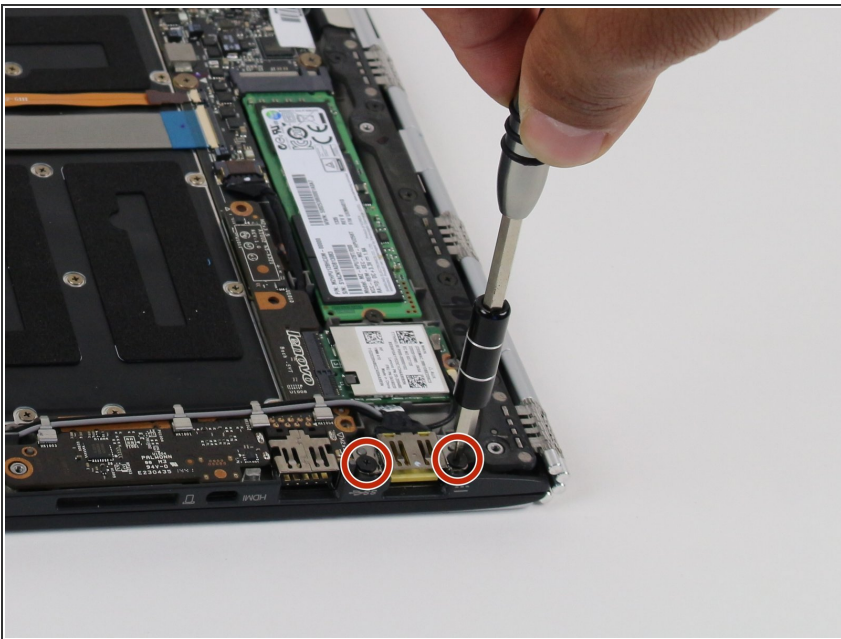
- Remove the USB assembly.
- i** If this is the side that was not working, then follow the steps backwards from here to put it back together.

## Step 15



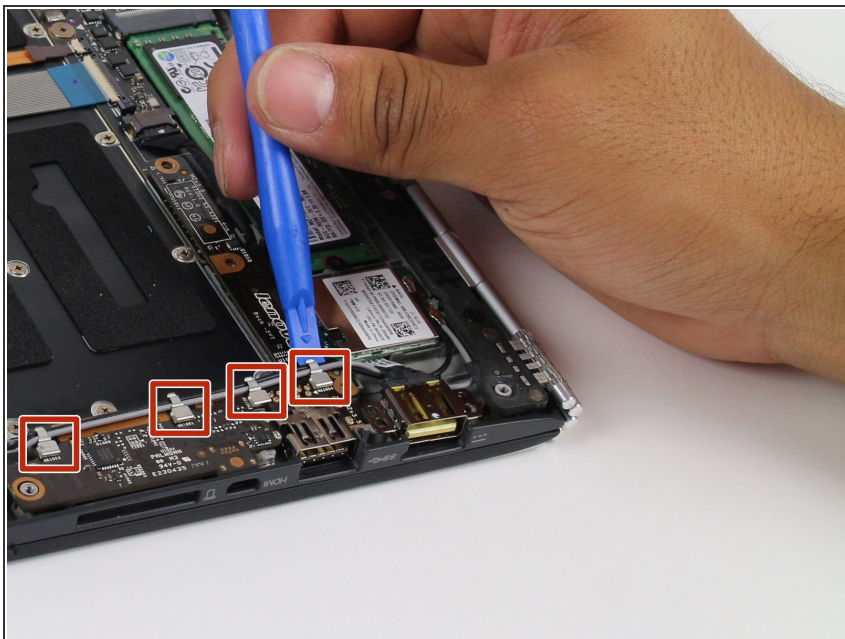
- On the other side of the laptop, remove the two 3.5 mm screws using the Philips 00 screwdriver.

## Step 16



- Remove the two 2.5 mm screws using the Philips 00 screwdriver.

## Step 17



- Use the plastic opening tool to lift the metal cable holders.
- ⓘ Exercise caution. Cable holders will break if lifted too far.

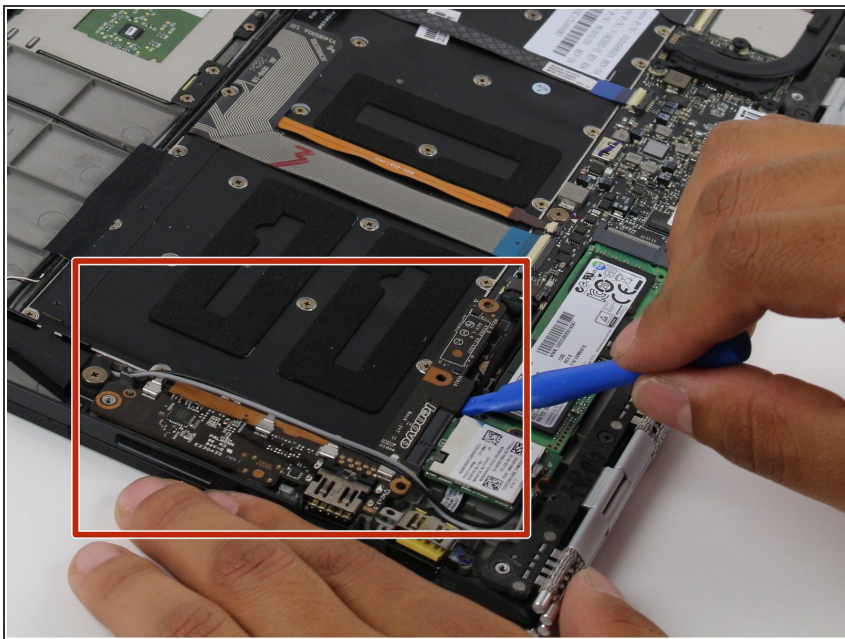
## Step 18



- Lift the USB port up and use the plastic opening tool to loop the wires around the USB port.

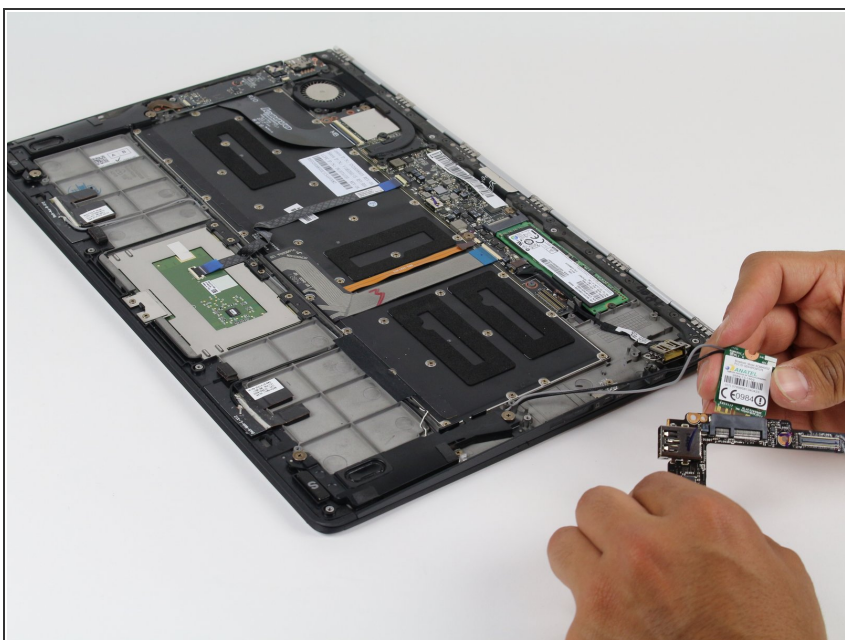


## Step 19



- Remove the USB assembly using the plastic opening tool.

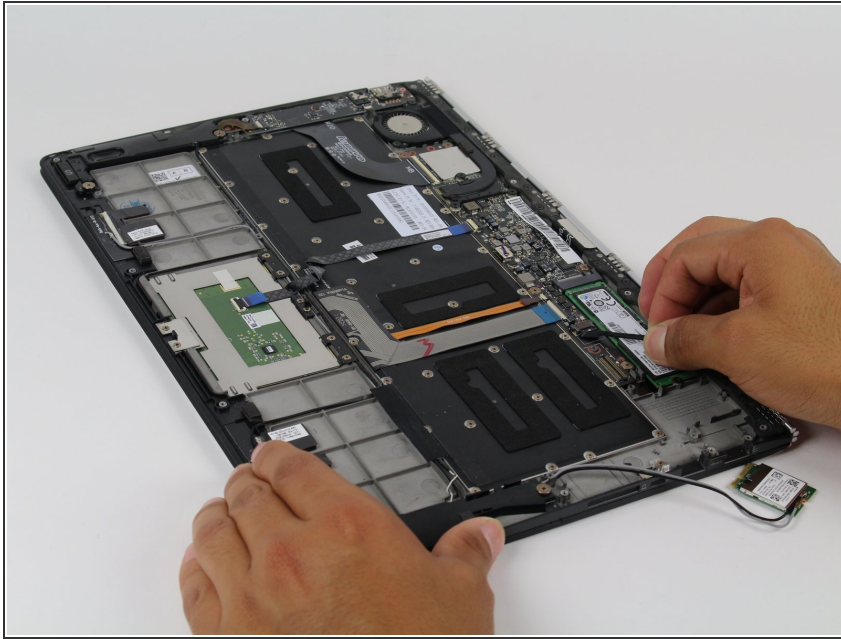
## Step 20



- Disconnect the WiFi card from the USB assembly.

**⚠ Be careful with the connectors on the WiFi card as they are fragile.**

## Step 21



- Pull the second USB hub off.
- ⓘ Be careful when pulling out the cable.

To reassemble your device, follow these instructions in reverse order.