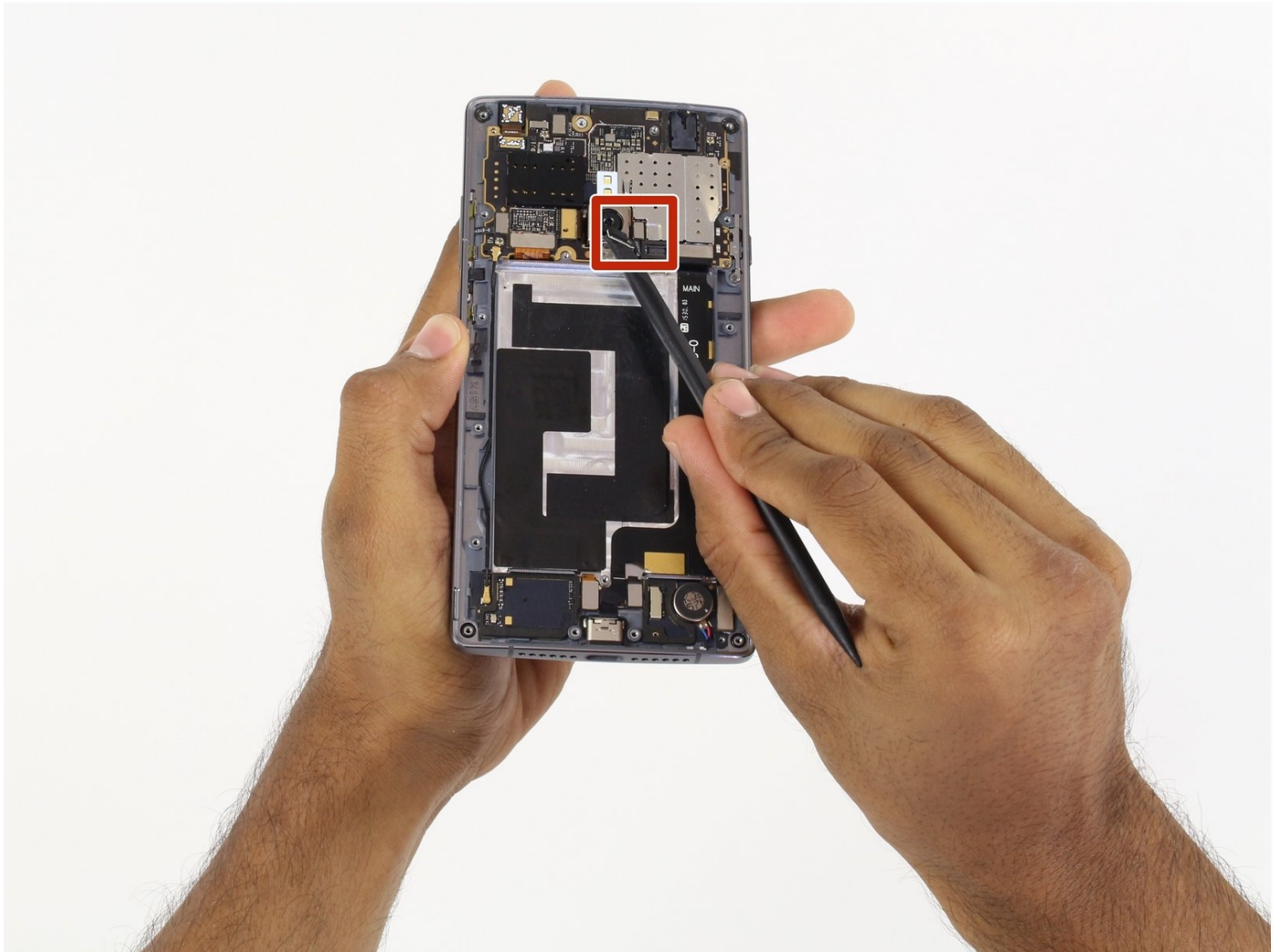




OnePlus 2 Front and Rear Camera Replacement

If your front and or rear cameras have stopped...

Written By: Kayla Williams



INTRODUCTION

If your front and or rear cameras have stopped taking clear pictures, it may be necessary to replace them. If that is the case, this guide will help you do that.

TOOLS:

Spudger (1)

Tweezers (1)

Phillips #000 Screwdriver (1)

Step 1 — SIM Card



- Make sure that your phone is turned off before proceeding
- Use an opening pick, your thumbnail, or a spudger to gently pry off the external casing

Step 2



- Locate the SIM card tray on the back of the phone
- Use your thumb to gently slide out the tray

Step 3



- Remove the SIM card tray

Step 4 — Battery



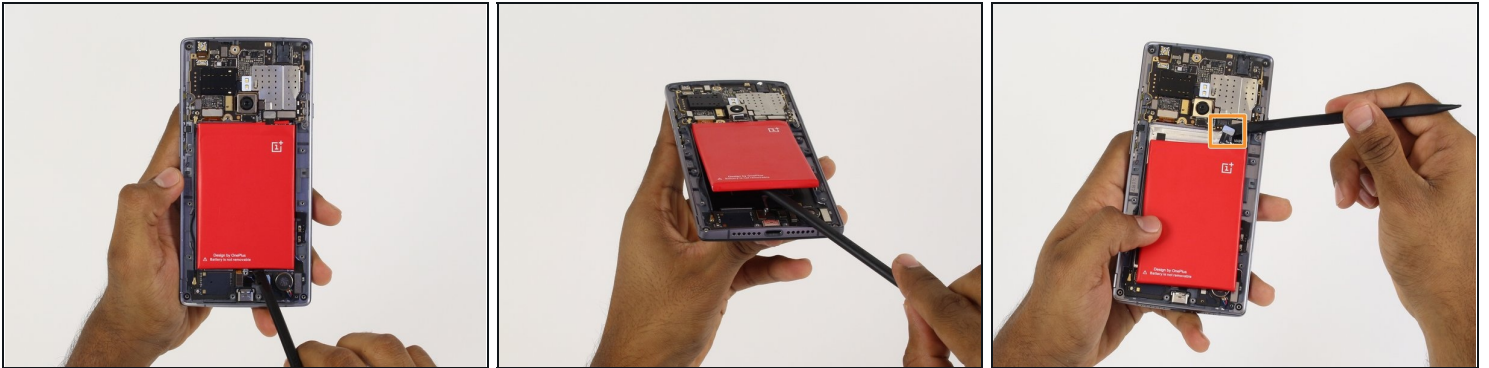
- Find and carefully remove all 6 rubber screw covers with the [tweezers](#).
- Unscrew all 18 screws from the mid frame.

Step 5



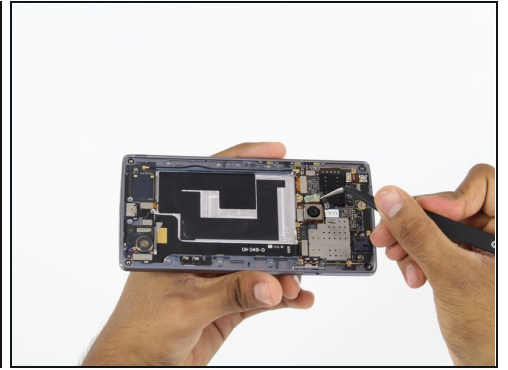
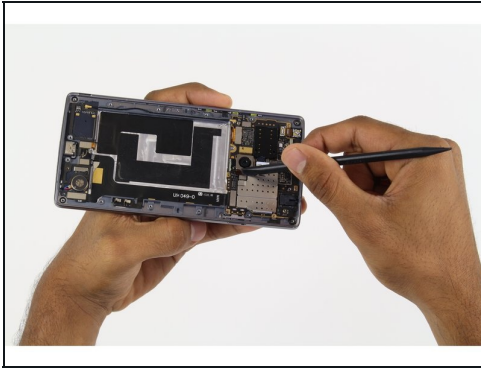
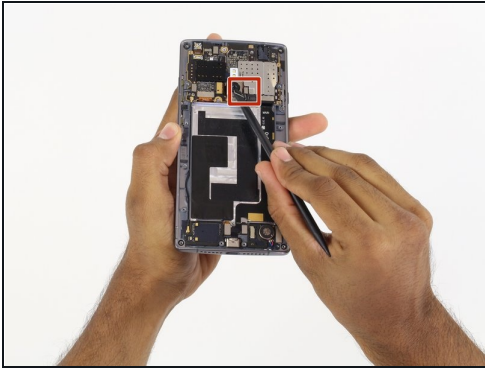
- **Carefully** pry up the mid frame from the back of the phone with the plastic opening tools.
- Slowly work your way around the phone releasing all the clips that hold the frame in place.

Step 6



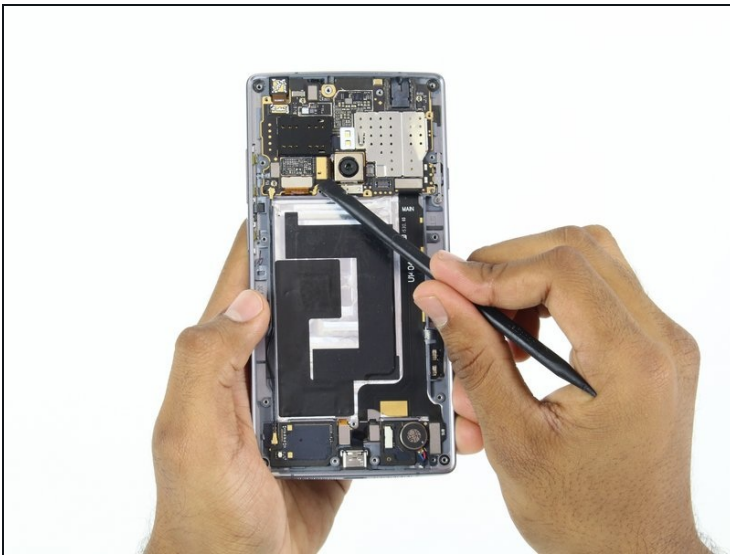
- Using the spudger tool, pry the battery up from the adhesive.
- Once the battery is loose from the adhesive holding it down, use the spudger tool to pry up the connection from the battery to the phone on the top right hand side.

Step 7 — Front and Rear Camera



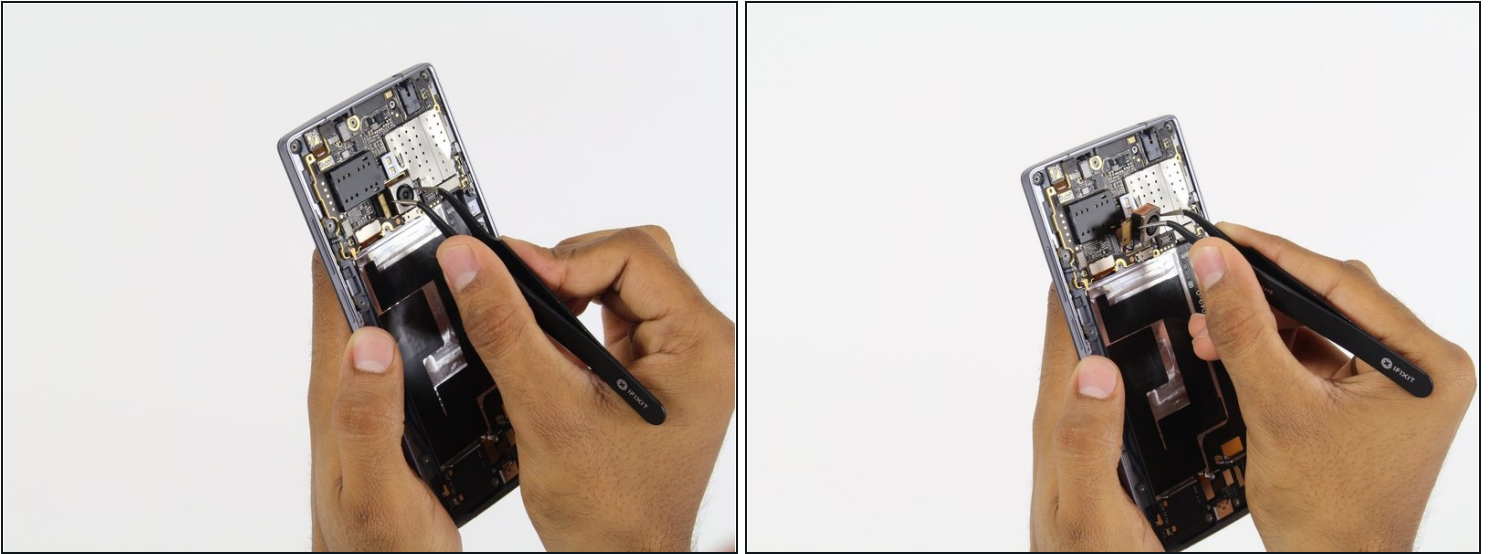
- Use the spudger tool to pry off the connections at the bottom-right of the front-facing camera.
- Be sure to disconnect both connections before attempting to lift off the wiring.

Step 8



- Use the spudger tool to pry off the connection on the left of the front facing camera.

Step 9



- Use the [tweezers](#) to lift up the camera from its groove.
- The camera has a long, flat portion at the bottom, so be sure to slide the camera up while lifting it up.

Step 10



- Use a spudger to pry off the connection below the front-facing camera.
- Using the tweezers, carefully remove the camera from its groove.

To reassemble your device, follow these instructions in reverse order.