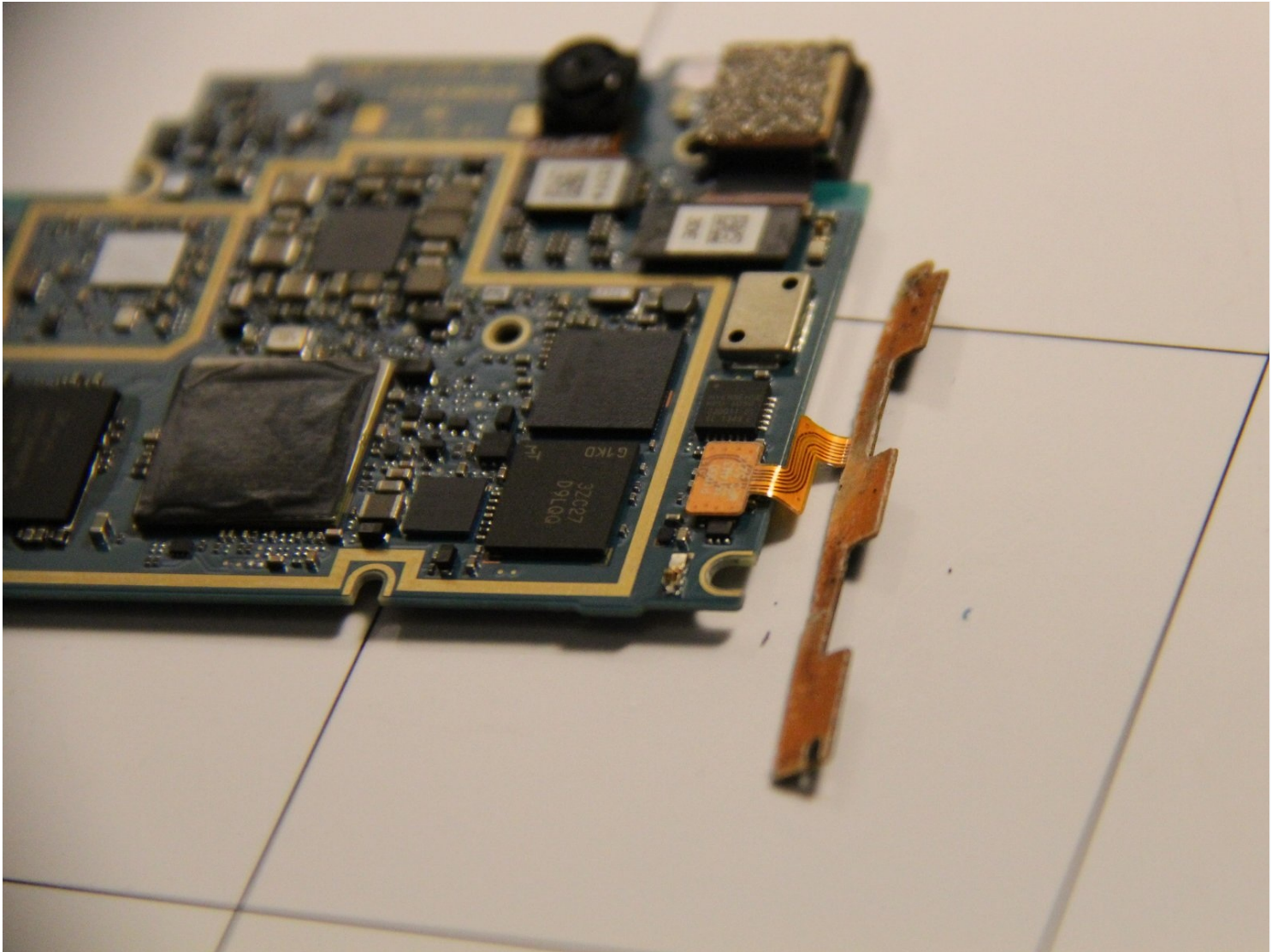




Xiaomi Mi 3 Side control buttons Replacement

Written By: Tyler Howard



TOOLS:

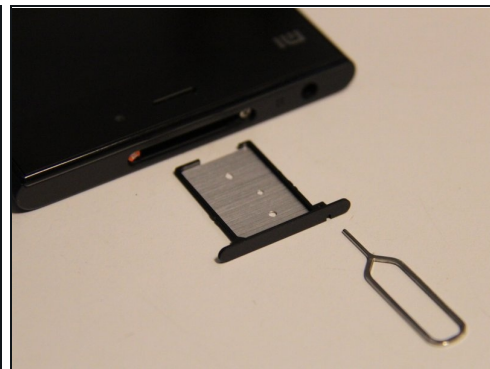
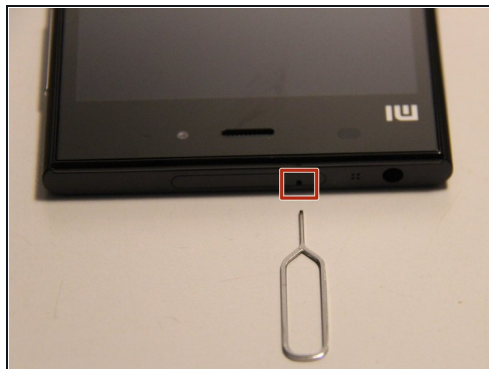
[iFixit Opening Picks \(Set of 6\)](#) (1)

[iFixit Opening Tool](#) (1)

[SIM Card removal tool](#) (1)

[Tweezers](#) (1)

Step 1 — Battery



- Firmly press the SIM card removal tool into the hole located at the top of the phone to eject the SIM card tray from the slot.

Step 2



- Remove the two Phillips head screws located at the top of the phone on either side where the SIM card was ejected.
 - ① One screw is located under an orange sticker which would serve as your warranty for the camera were this practice not illegal as per the [Magnuson-Moss Warranty Act of 1975](#).

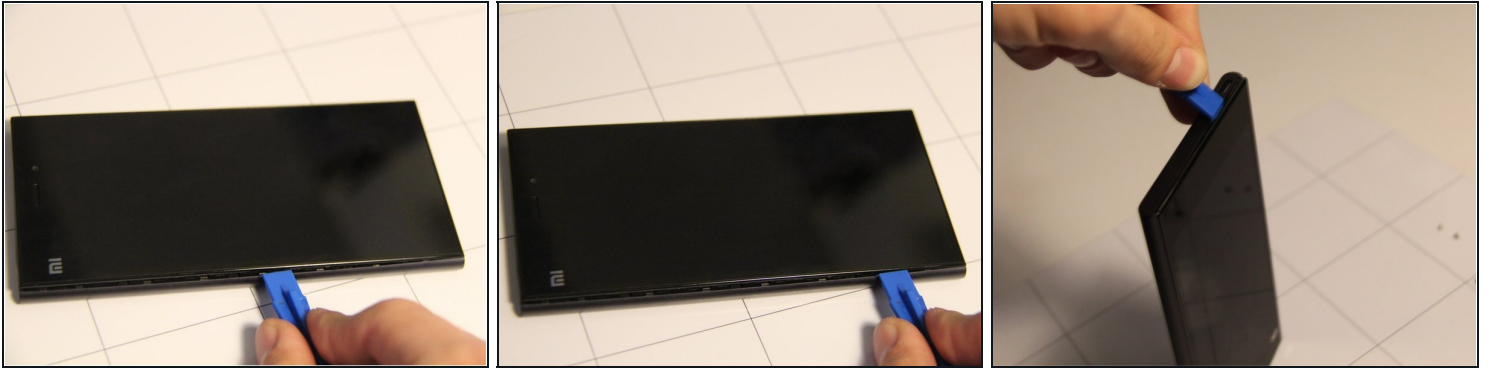
Step 3



- Insert a pry tool into the upper edge of the phone, where there is a small gap between screen and frame of the phone to begin separating the screen from the rest of the phone.

⚠ Be careful when using the pry tool as it can damage the phone's screen or other components.

Step 4



- Once the pry tool has been inserted into the phone, slide it around the perimeter of the phone while gently lifting until the screen panel and back panel of the phone separate.

⚠ Be careful when using the pry tool as it can damage the phone's screen or other components.

Step 5



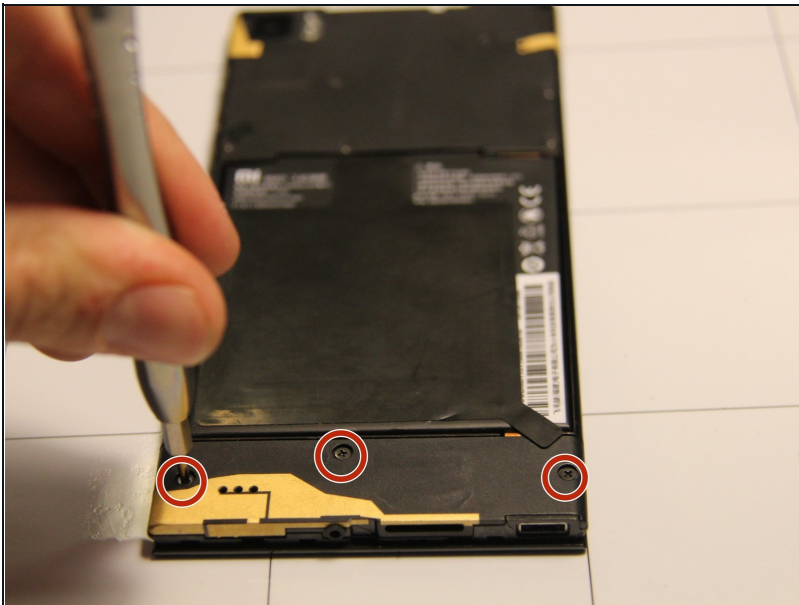
- The back of the phone should now be separated from the screen.

Step 6



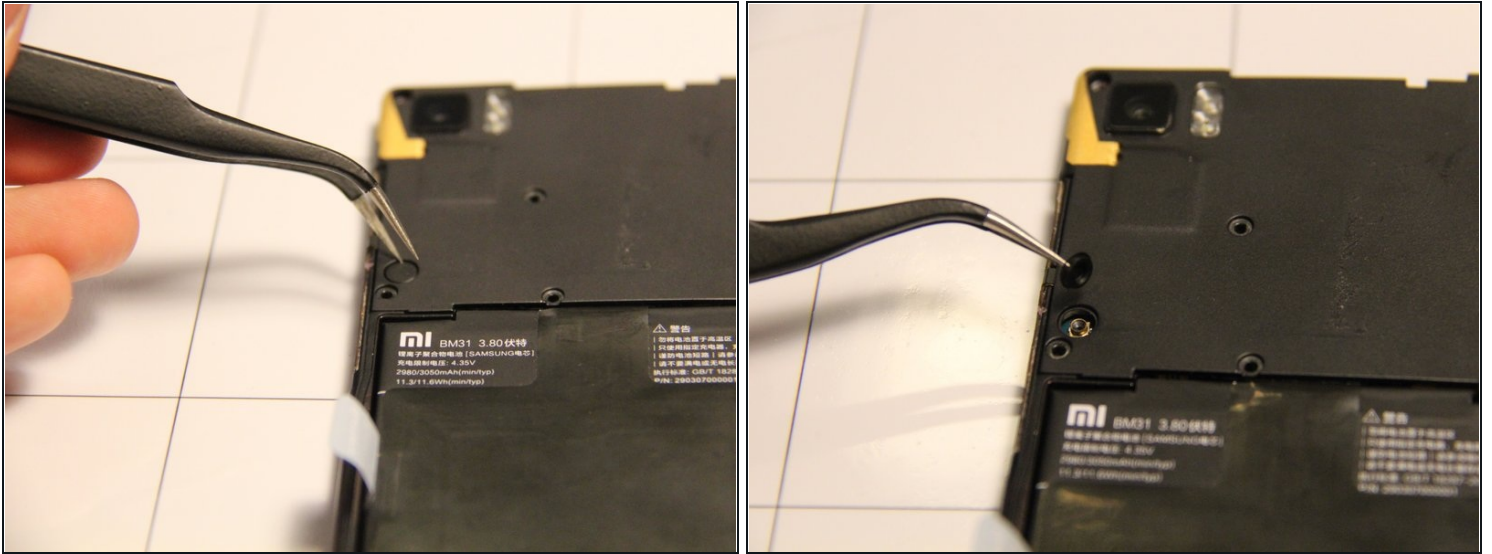
- Place the front panel screen side down with the camera at the top.
- Remove these six Phillips head screws located at the upper half of the phone.
- This screw is located under an orange sticker at the top right corner of the panel. The sticker can be removed with a pair of [tweezers](#), then remove that Phillips head screw.

Step 7



- Next, remove these three screws located at the bottom of the back panel.

Step 8



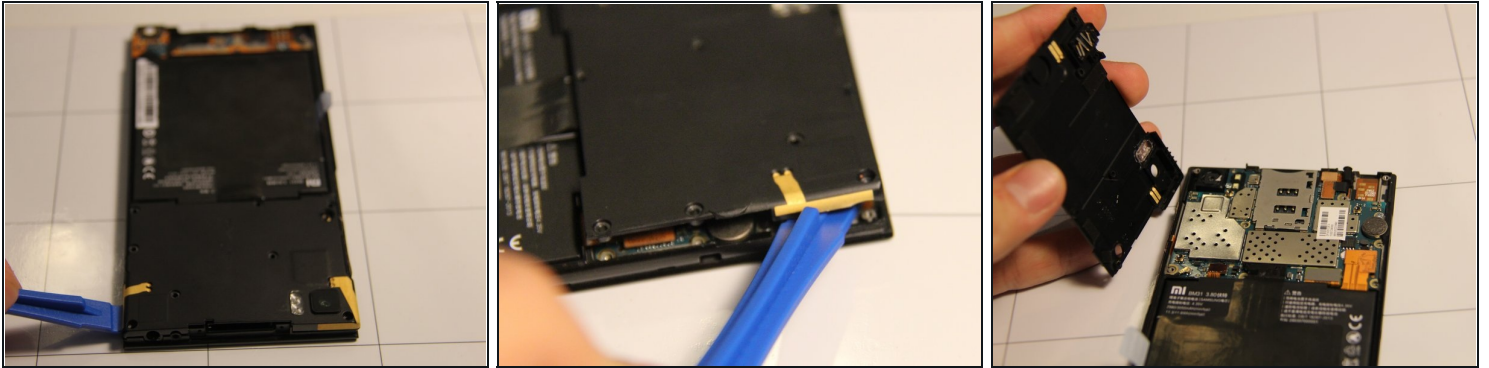
- Using tweezers, remove the rubber dust cover on the back panel of the phone.

Step 9



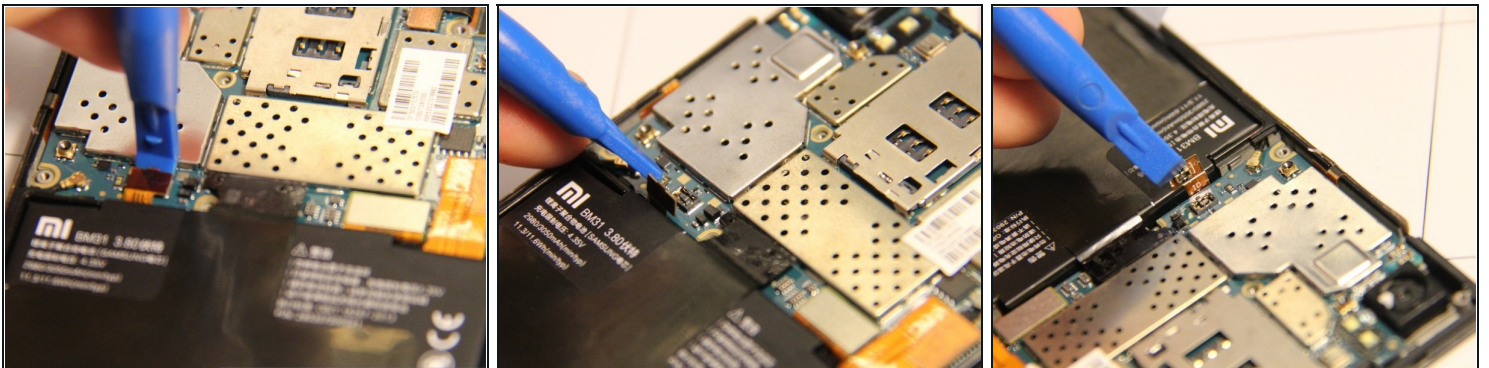
- Remove the plastic cover on the bottom of the back panel by inserting the pry tool at the edge and gently lifting.

Step 10



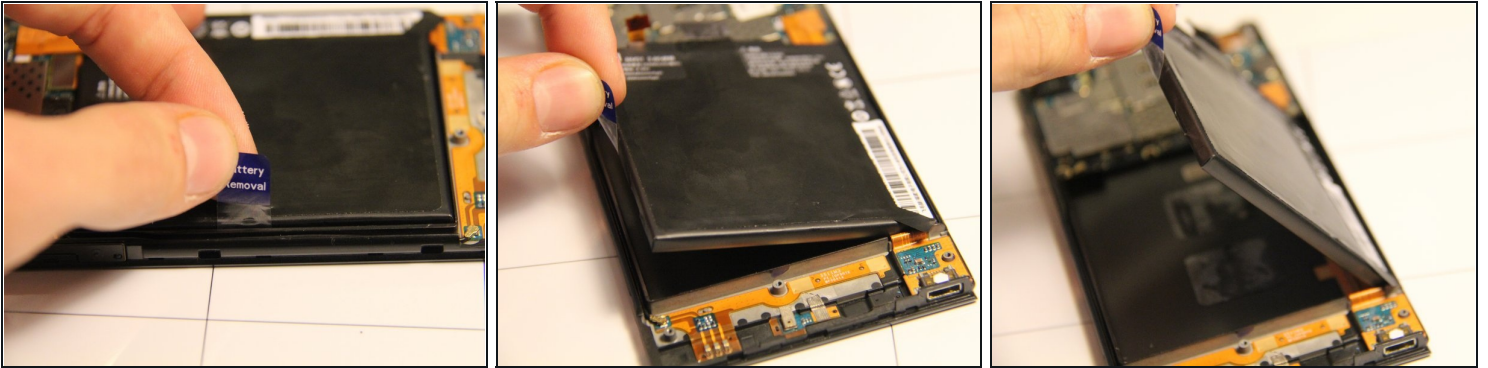
- Remove the upper plastic cover from the back panel by inserting the pry tool into the upper edge and gently lifting.
- ① Some models have the NFC antenna at the back of the battery glued to the top cover. It is not possible to remove the top cover without removing the battery as well. For these models, check the touchscreen guide for instructions.

Step 11



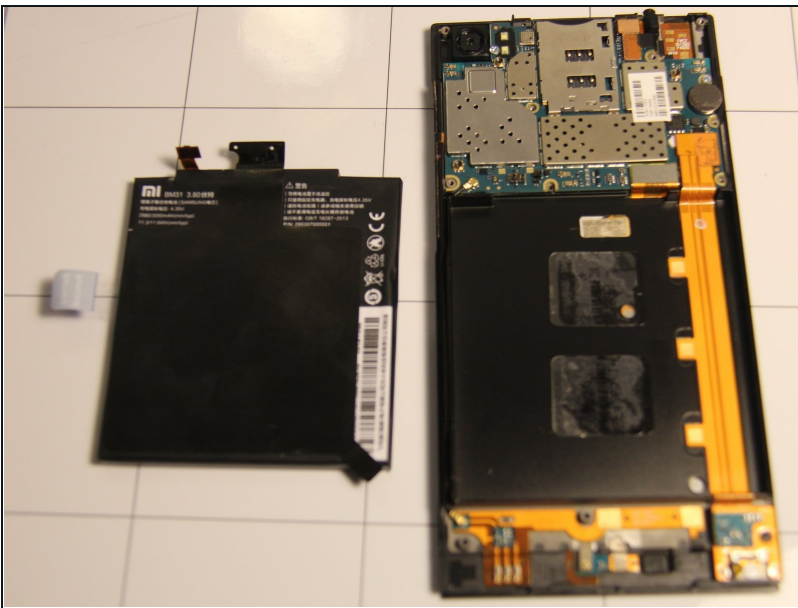
- Using a spudger, remove the small ribbon cable that is connected to the battery.

Step 12



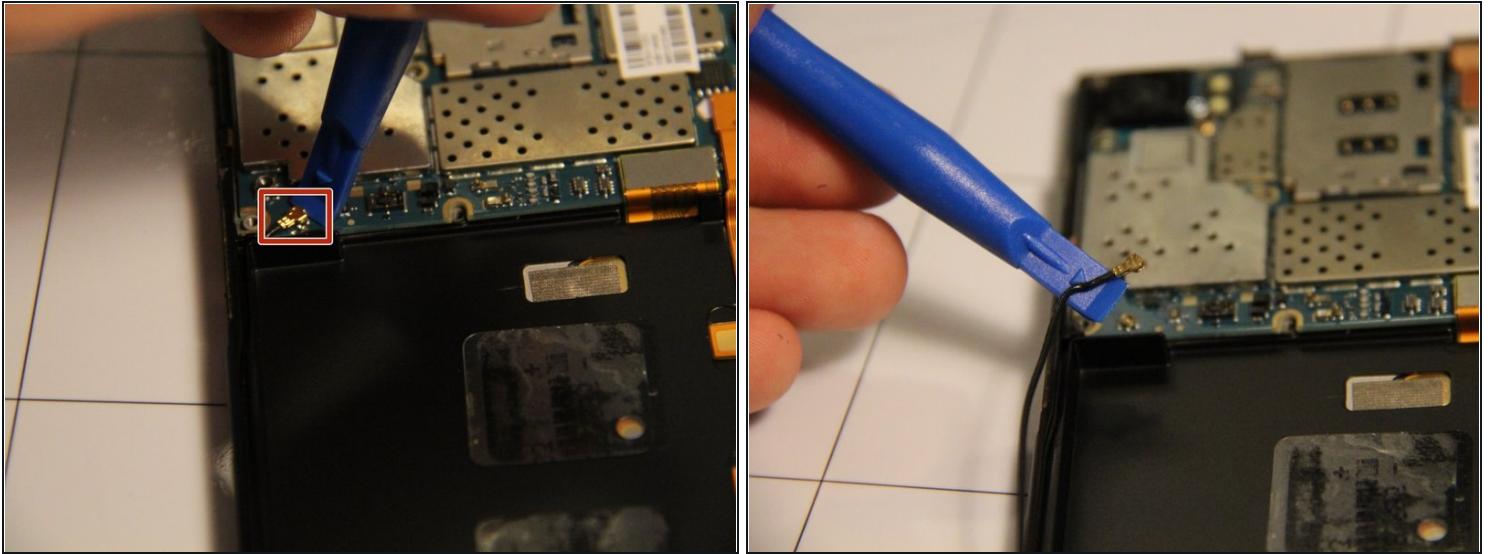
- Remove the battery by gripping and pull up on the "Battery Removal" tab attached to the left side of the battery on the back panel.
 - ① Some force may be required to remove the battery since it is adhered to the phone with two pieces of double sided tape.

Step 13



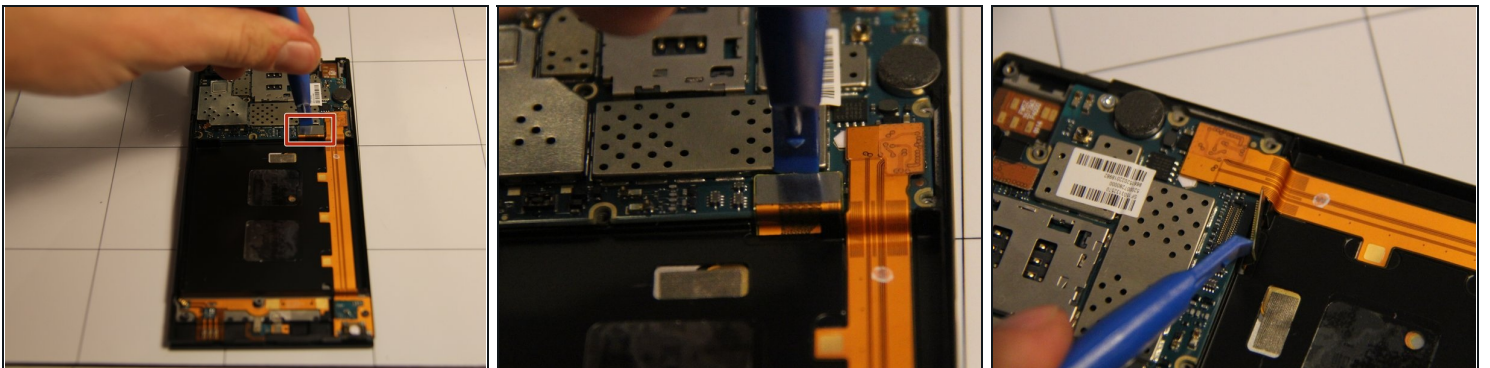
- The battery is now removed from the panel.

Step 14 — Motherboard



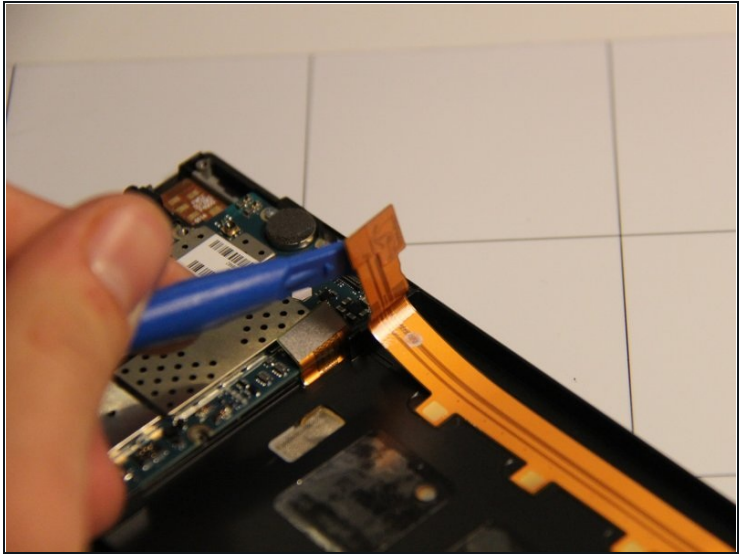
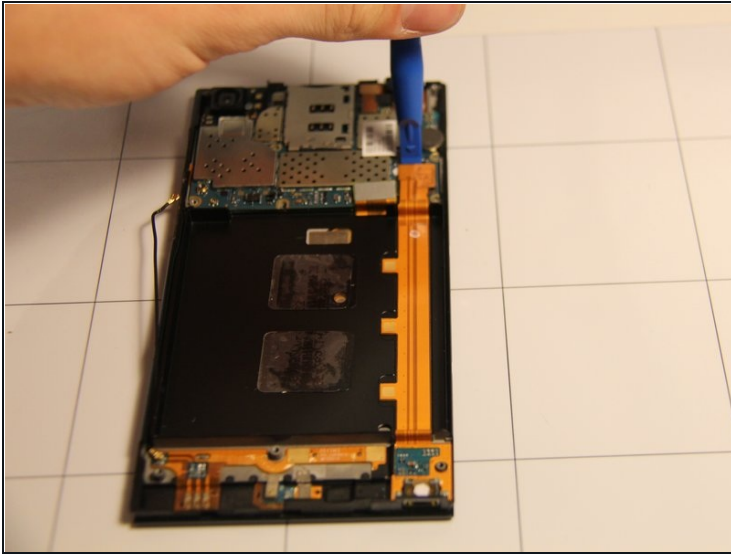
- Disconnect the antenna wire that is attached to the lower left side of the motherboard using the pry tool.

Step 15



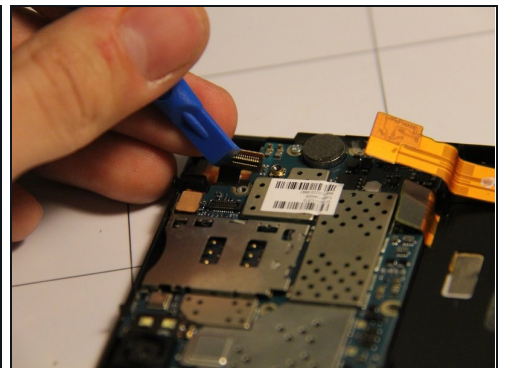
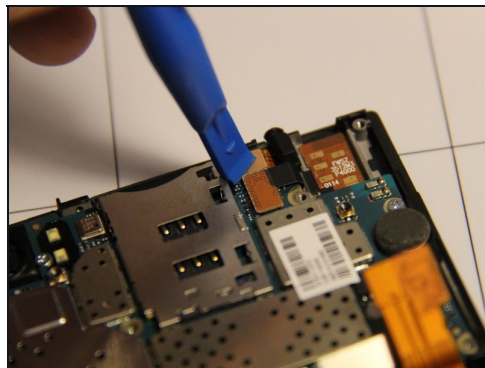
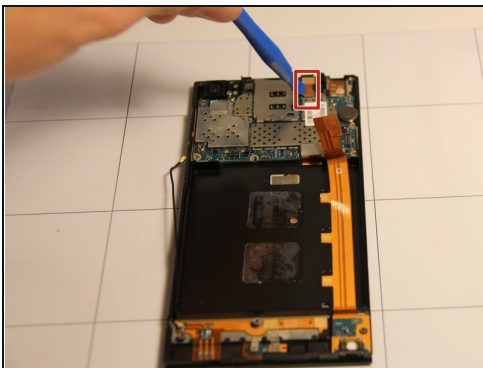
- Use a pry tool to separate the LCD display cable from the motherboard. The cable connects to the motherboard as a rectangular metallic piece at the bottom right of the motherboard.

Step 16



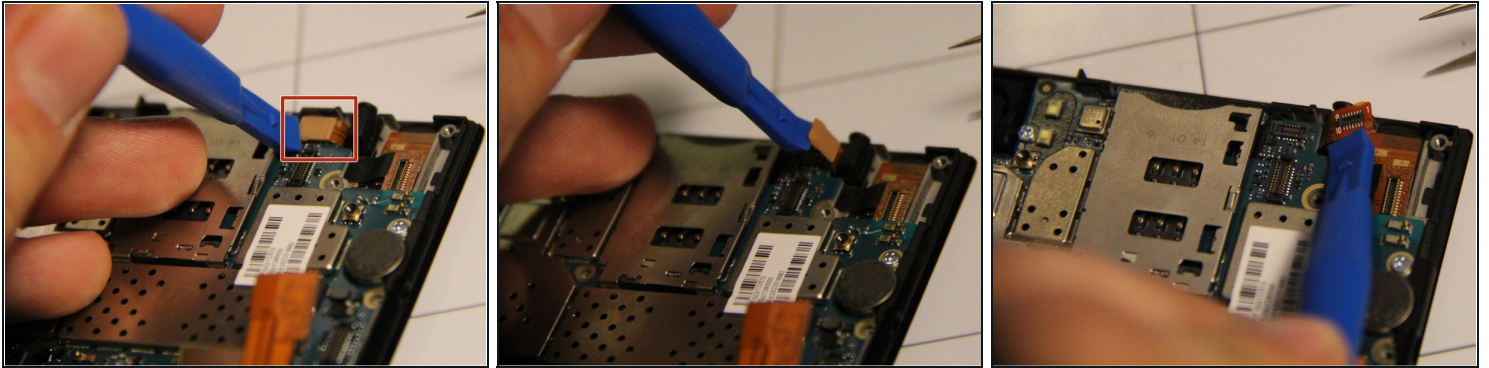
- Disconnect the gold ribbon cable for the LCD display by gently inserting the pry tool under the wide end and lifting up.

Step 17



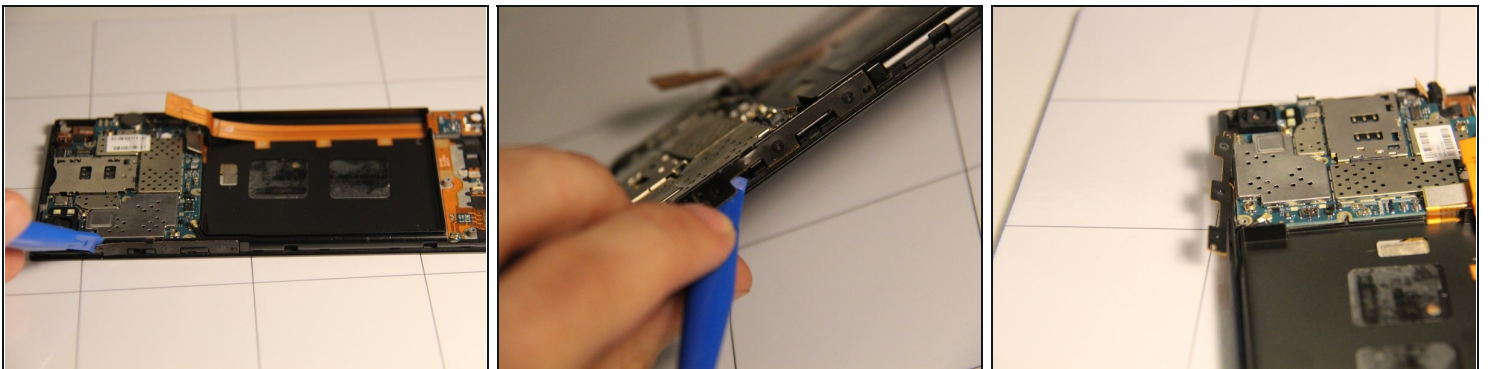
- Separate a cable ribbon from the top right of the motherboard by gently inserting the pry tool under the rectangular metallic piece and lifting.

Step 18



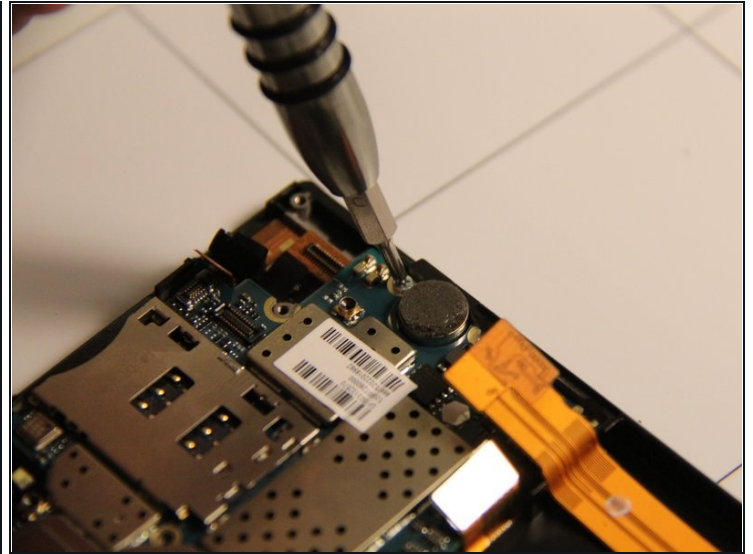
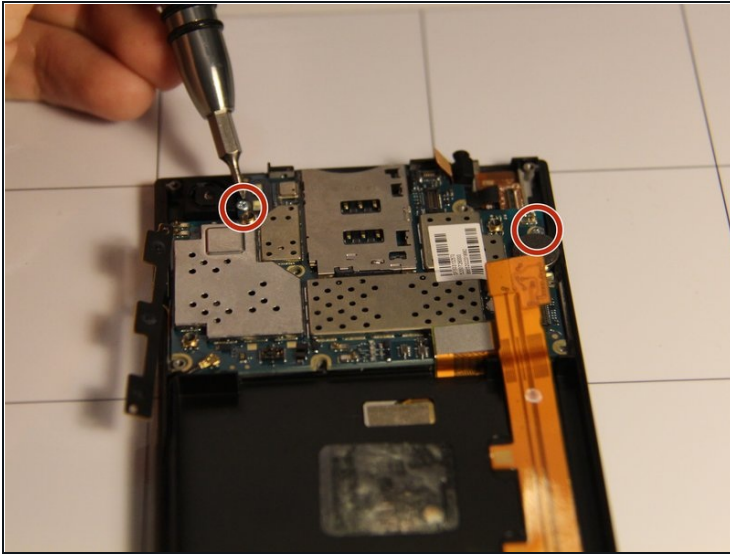
- Separate a cable ribbon from the top right of the motherboard - near the cable from the previous step - by gently inserting the pry tool under the rectangular metallic piece and lifting.

Step 19



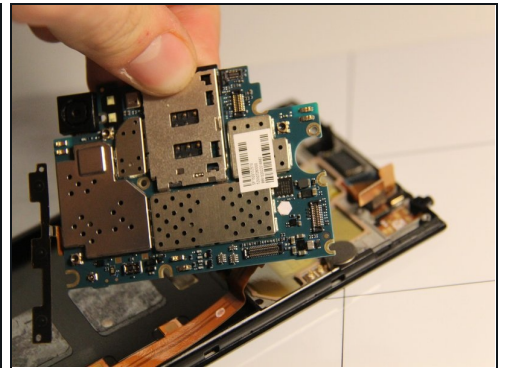
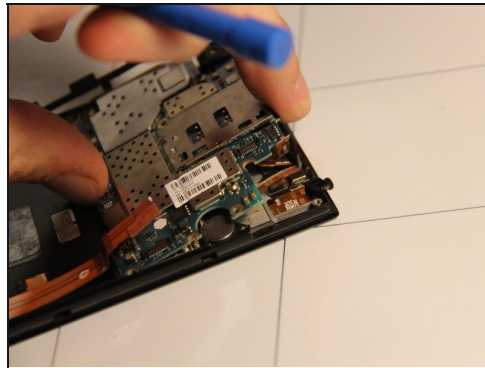
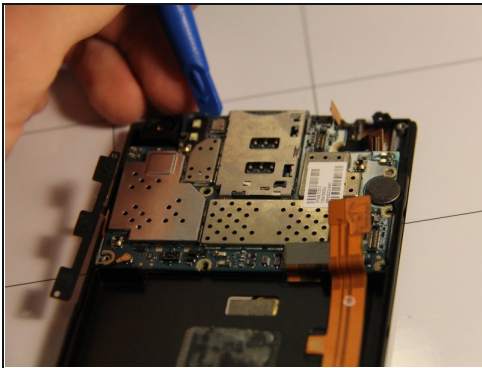
- Using a pry tool, gently lift the side control buttons assembly away from the case. They should be loosely connected to the motherboard.

Step 20



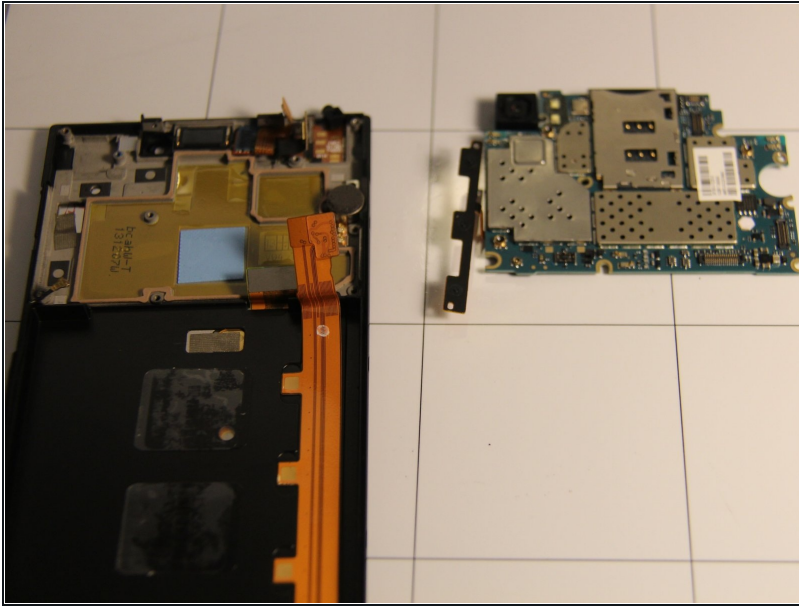
- Remove these two screws.

Step 21



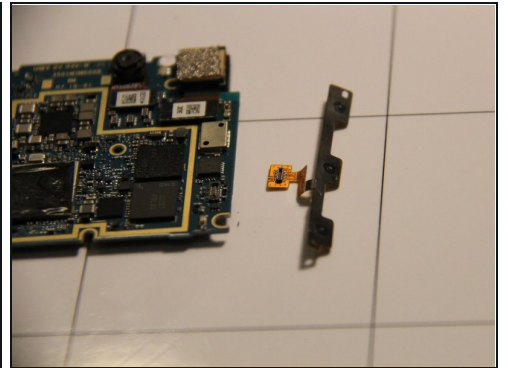
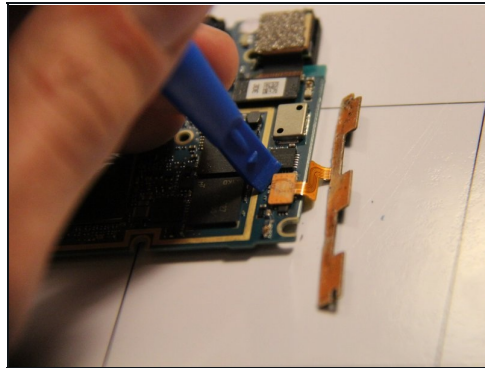
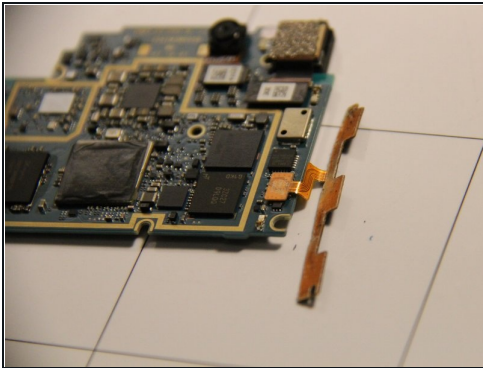
- Remove the motherboard from the panel carefully. Use the pry tool as a lever from the top of the panel and lift it from that side.

Step 22



- The motherboard has now been successfully removed.

Step 23 — Side control buttons



- With the motherboard removed flip it over onto its front and use a small pry tool to gently disconnect the side buttons from the back of the motherboard.

To reassemble your device, follow these instructions in reverse order.