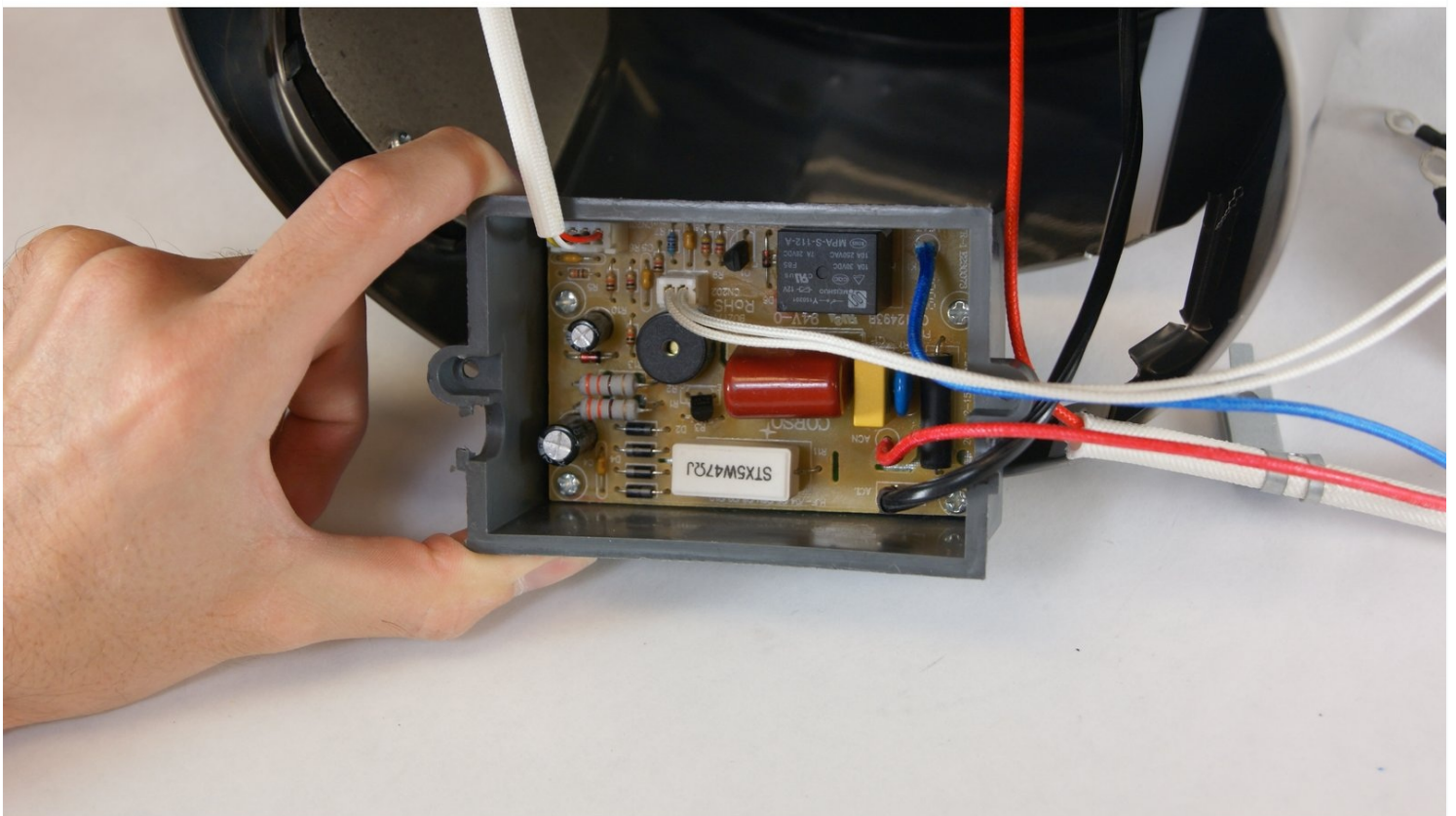




Aroma ARC-914SBD Control Module Replacement

Right in the middle of making rice for dinner,...

Written By: Brandon Nieves



INTRODUCTION

Right in the middle of making rice for dinner, the rice cooker goes out. There is no need to throw it out; this guide will walk you through how to remove your Aroma ARC-914SBD Control Module to find the problem. In 12 steps, we will walk through how to disassemble the control board in about an hour. The control panel can be reassembled using these steps in reverse order.

TOOLS:

Phillips #2 Screwdriver (1)

iFixit Opening Tool (1)

Step 1 — Lid



- The first step is removing the condensation catcher in order to reach the control panel. We do this by pinching the condensation catcher as shown, on both sides and pull the condensation catcher away from the cooker.

Step 2



- Once the condensation catcher has been removed, set it aside for reassembly later.
- Now make sure you have a Phillips head screwdriver, size PH2. This tool will allow you to remove the screw that was behind the condensation catcher.

Step 3



- Gently remove the piece that was held in place by the screw, you do this by pulling out from the top, then pulling up. This will expose the hinges for the lid.

Step 4



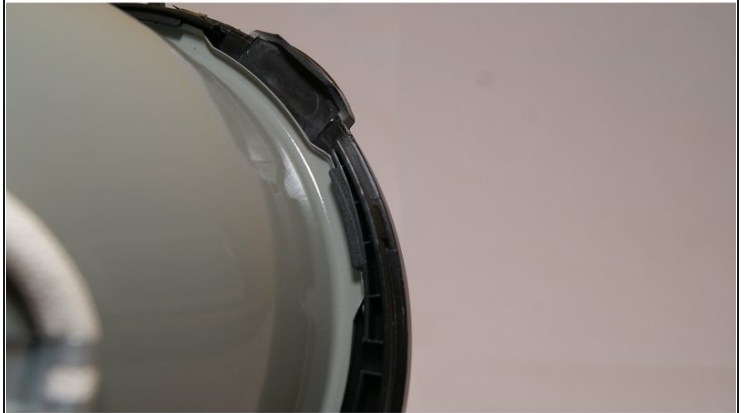
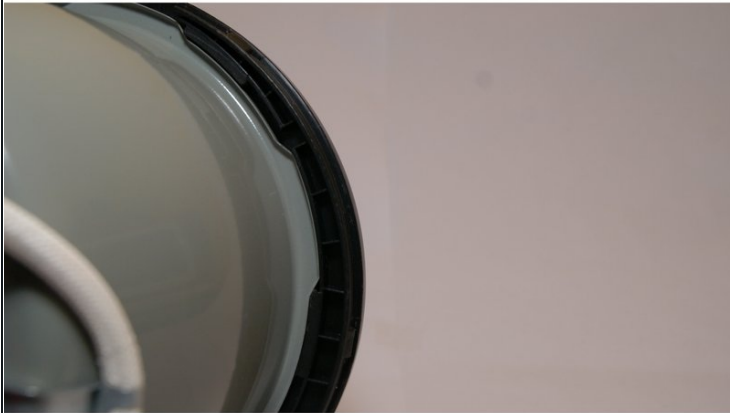
- To remove the hinge, gently rotate the bottom of the rod upwards, then push inward to pull the rod out. Repeat the process for each rod. This will allow the lid to be removed.

Step 5 — Heating Element/ Thermostat



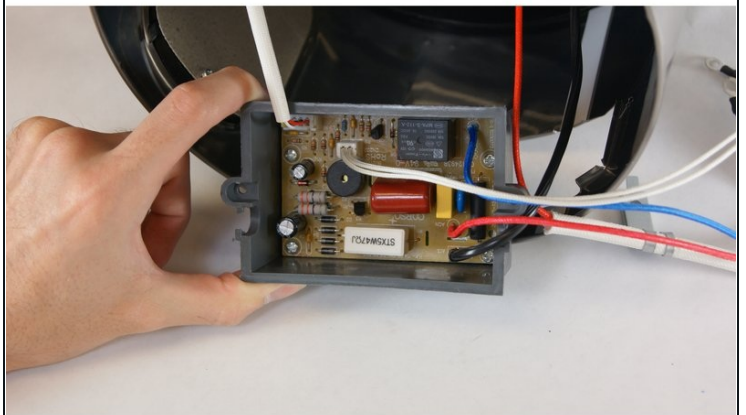
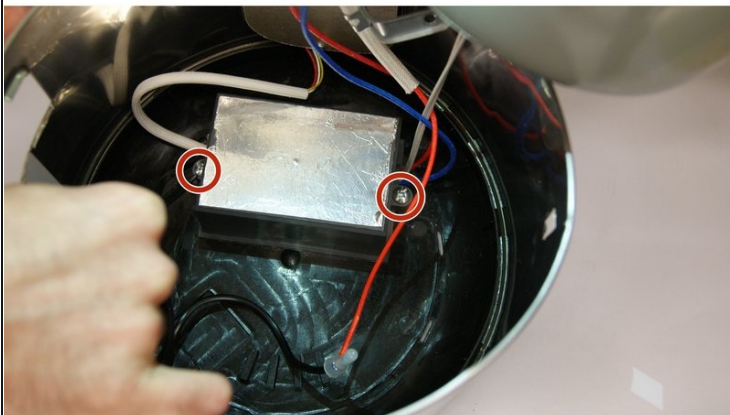
- Locate the piece on the black plastic trim that is opposite from where the hinges were. Carefully, pry this piece from the bottom to get the tab from behind the stainless steel to in front of the steel as shown.

Step 6



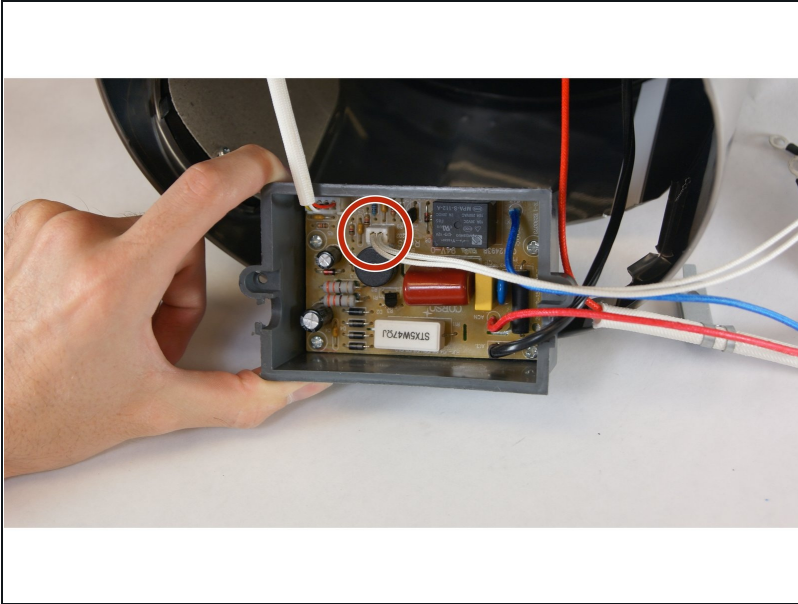
- Next, you must remove the upper black trim which is connected to the inside liner with tabs. To do this you must hold the interior walls still, while rotating the trim so that the tabs line up with the slots. (tabs cannot be seen at this point, pics are to give you an idea of what you cannot see inside the device)

Step 7



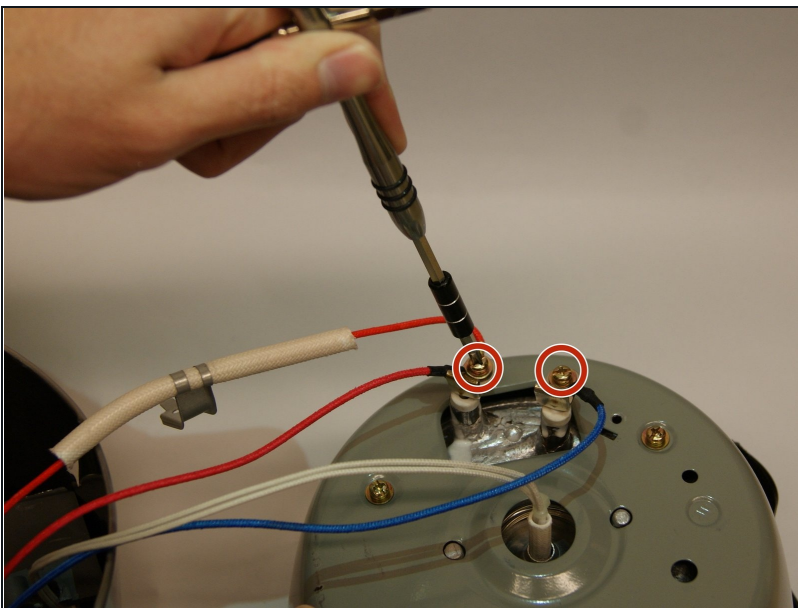
- Using a Phillips head screwdriver, size PH2, remove the screws from the control module to expose wired connections.

Step 8



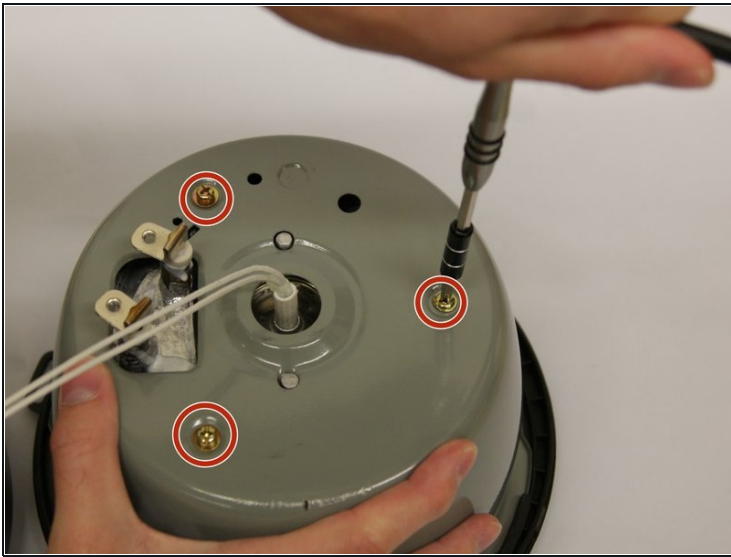
- Unplug thermostat from control module

Step 9



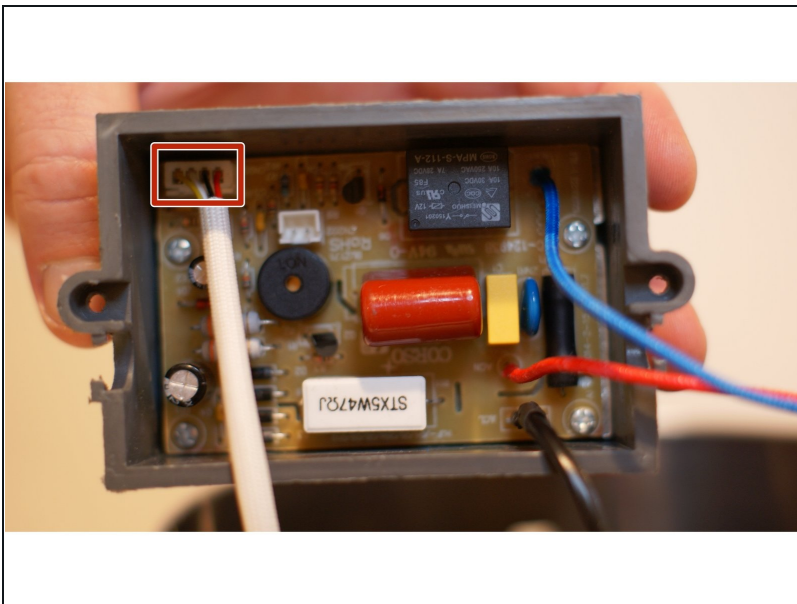
- Remove red and blue wires from heating element to fully detach from control module. This is done by removing the screws on the heating element terminals using a Phillips head screwdriver, size PH2.

Step 10



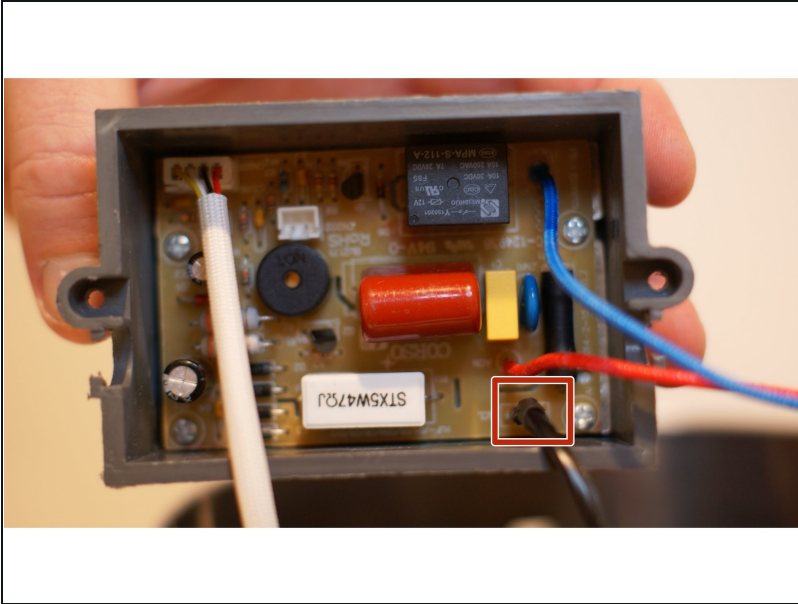
- Again, using a Phillips head screwdriver, size PH2, remove the three screws holding the heating element assembly to the bowl. This will remove the heating element and the thermostat.

Step 11 — Control Module



- Unplug the interface from the control module

Step 12



- Unplug the power from the control module

To reassemble your device, follow these instructions in reverse order.