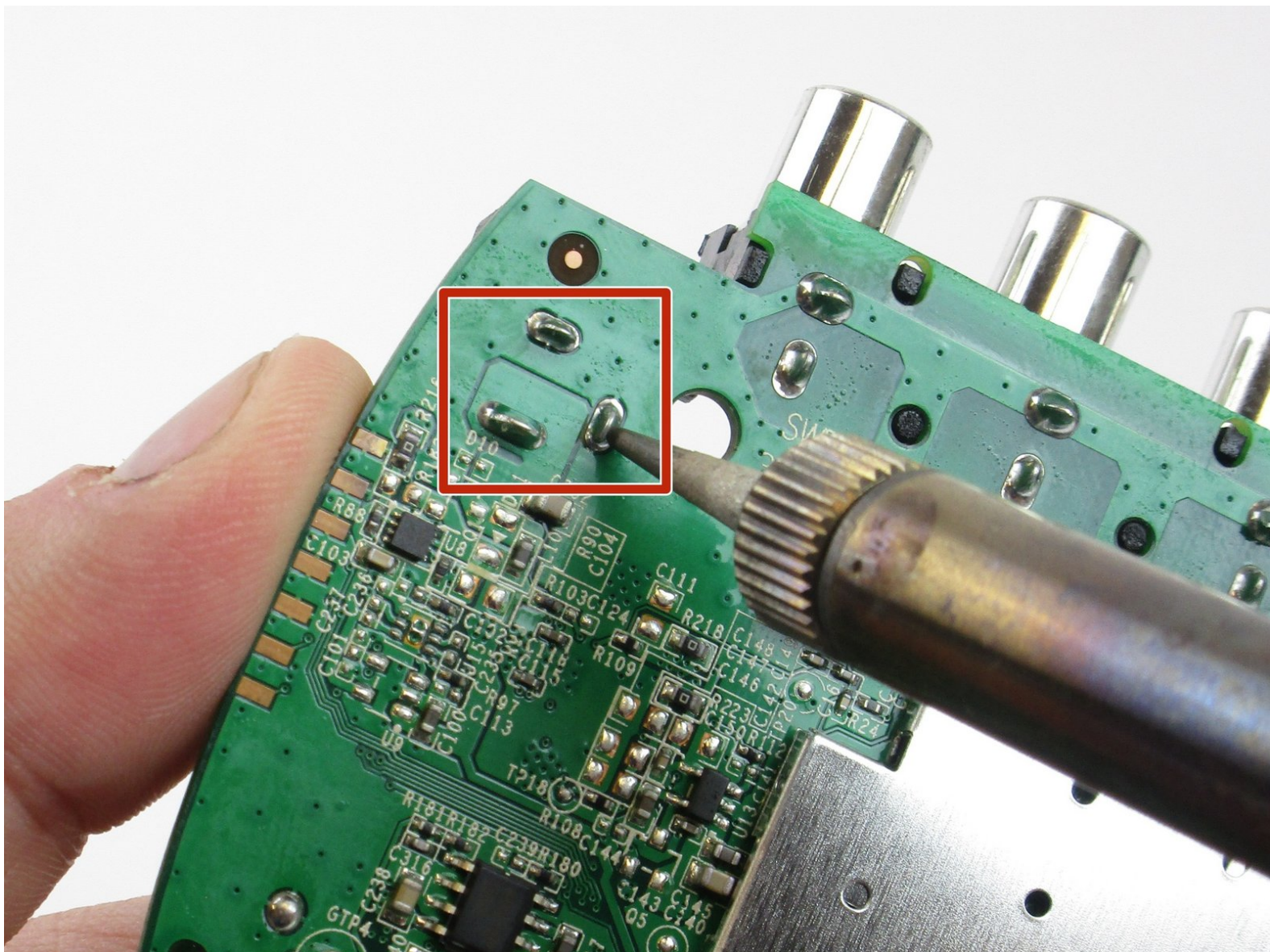




# Roku 2 A/C Power Port Replacement

This guide will demonstrate how to remove and replace the A/C power port.

Written By: david quintana



---

## INTRODUCTION

This guide will demonstrate how to remove and replace the A/C power port. Be sure to check out the [Soldering Technique Guide](#) to learn ore about soldering before completing this repair.

---

### TOOLS:

- [iFixit Opening Tools](#) (1)
  - [iOpener](#) (1)
  - [Phillips #000 Screwdriver](#) (1)
  - [Spudger](#) (1)
  - [Soldering Workstation](#) (1)
-

## Step 1 — Roku 2 Motherboard



- Heat up the iOpener for 30 seconds in the microwave and place across rubber pads on the back of the device.
- ⓘ It may take multiple heats, left for a minute at a time, to properly loosen the glue.

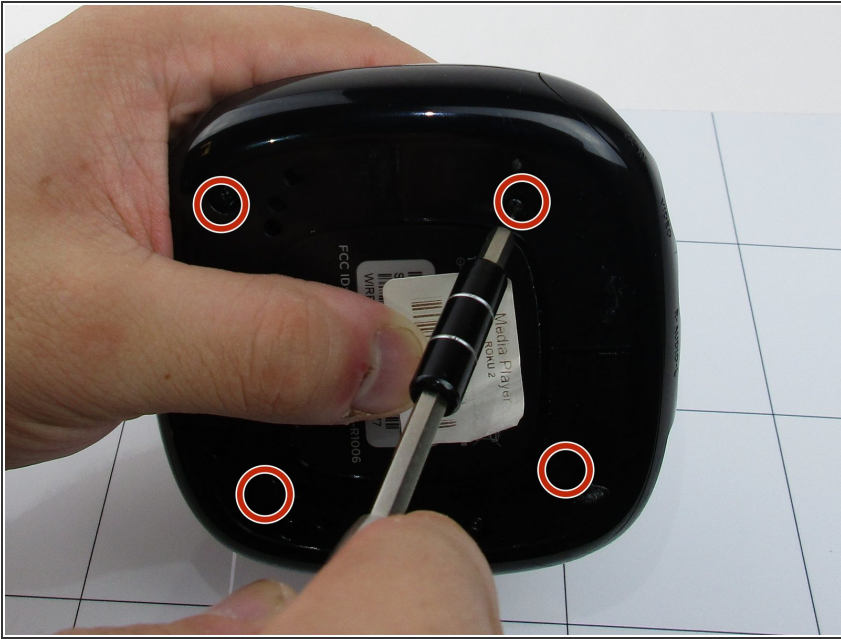
## Step 2



- Gently use the plastic opening tool to pry the rubber pads off.



### Step 3



- Remove the four Phillips #000 screws from the bottom of the case.

### Step 4



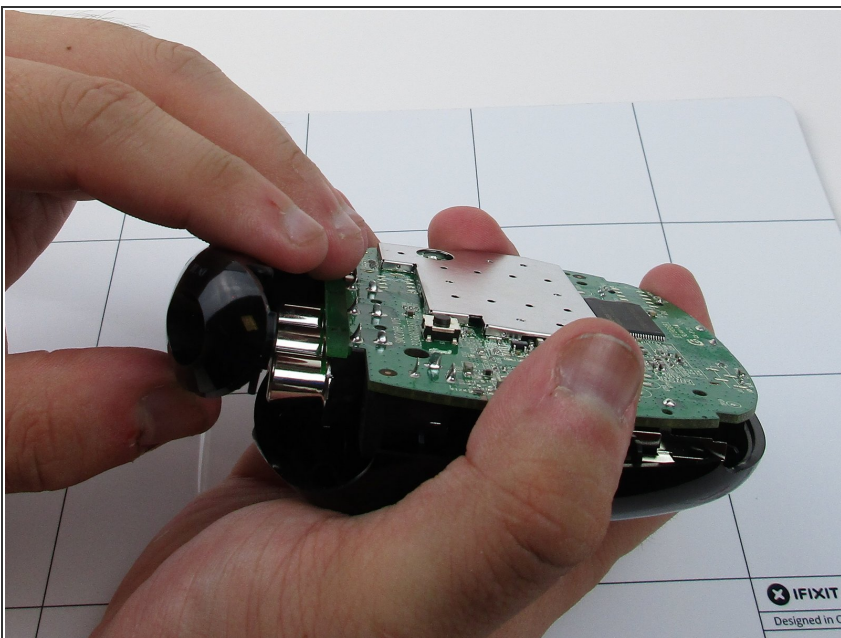
- Gently remove the under side of the device.

## Step 5



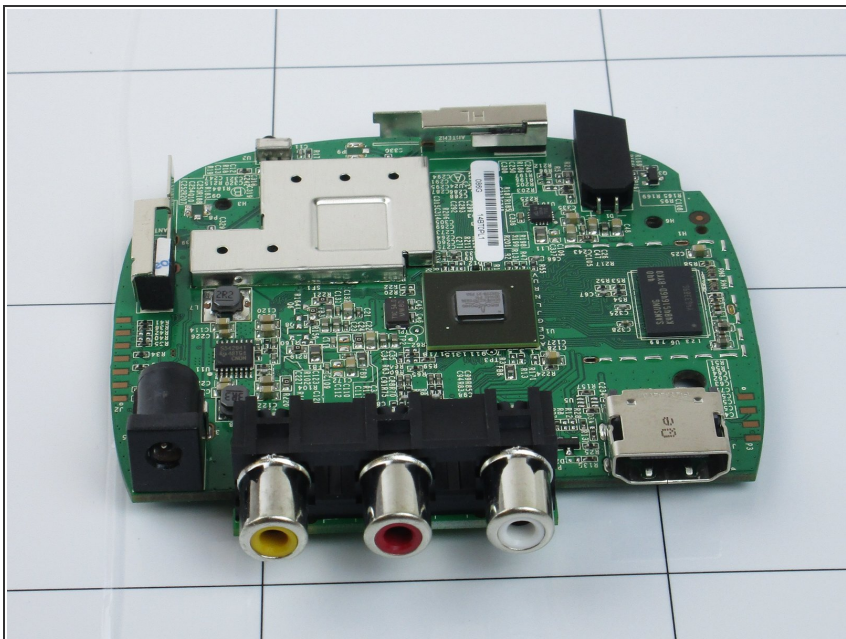
- Remove the middle component that is held in place by the top and bottom of the device.

## Step 6



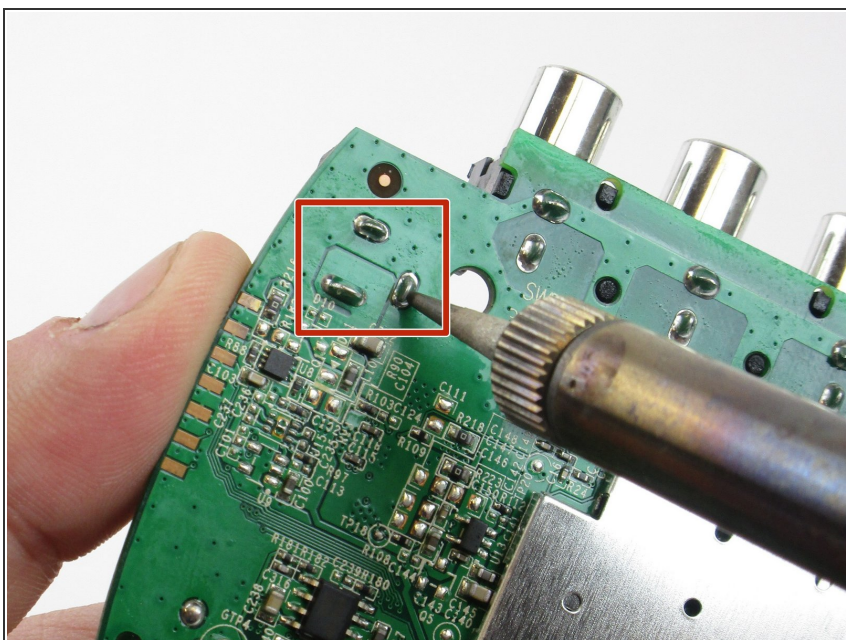
- Remove the cover over the A/V ports on the front of the device.

## Step 7



- Remove the board from the plastic enclosure.


## Step 8 — A/C Power Port



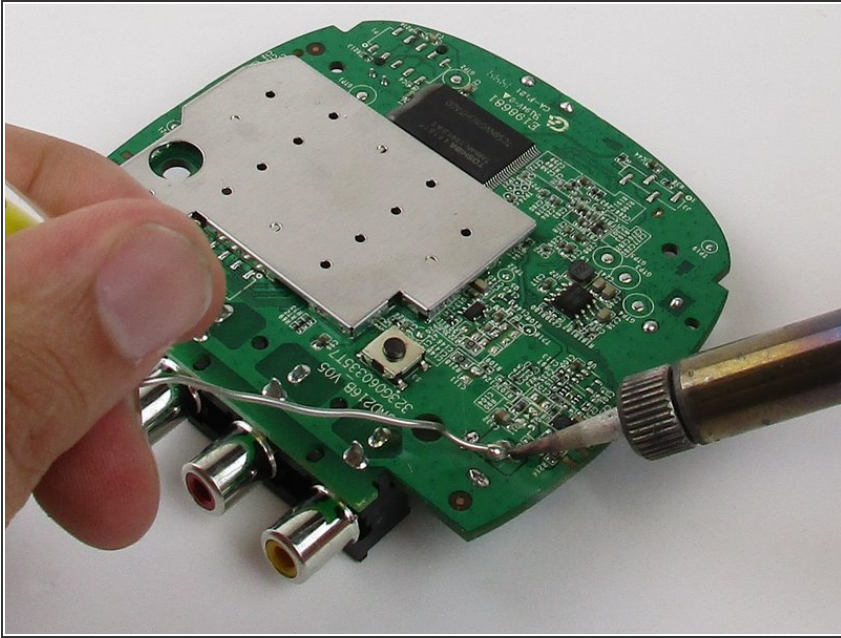
- Heat the 3 solder leads on the bottom side of the motherboard opposite of the A/C Port until the



point you can pull the port away from the board.

-  To learn more about soldering check out the [Soldering Technique Guide](#).

## Step 9



- Insert the new A/C power port where the old one was. Gently apply solder to the 3 pins on the bottom side of the mother board to connect it.

To reassemble your device, follow these instructions in reverse order.