



Munchkin Mozart Magic Cube Light Replacement

This guide will teach you how to remove and replace the lights located beneath the faces of the cube.

Written By: Nikolas Soulandros



INTRODUCTION

Outline what you are going to teach someone how to do.



TOOLS:

- [Metal Spudger Set](#) (1)
 - [Jimmy](#) (1)
 - [Soldering Workstation](#) (1)
 - [iFixit Opening Tools](#) (1)
-

Step 1 — Face plate



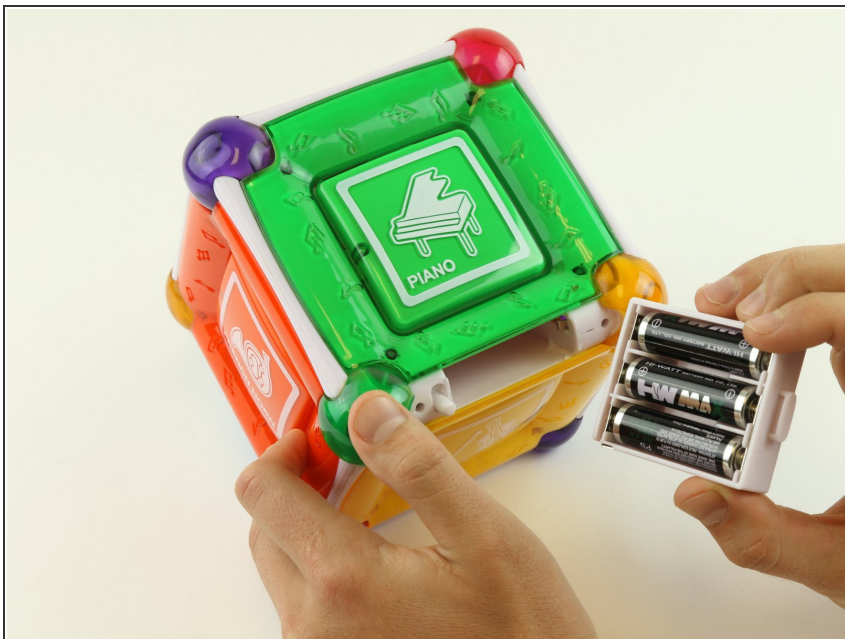
- Remove two 6 mm Phillips #2 screws on either side of the On/Off Plate.

Step 2



- Remove the On/Off switch plate and save the screws so you can use them later to put the plate back on.

Step 3



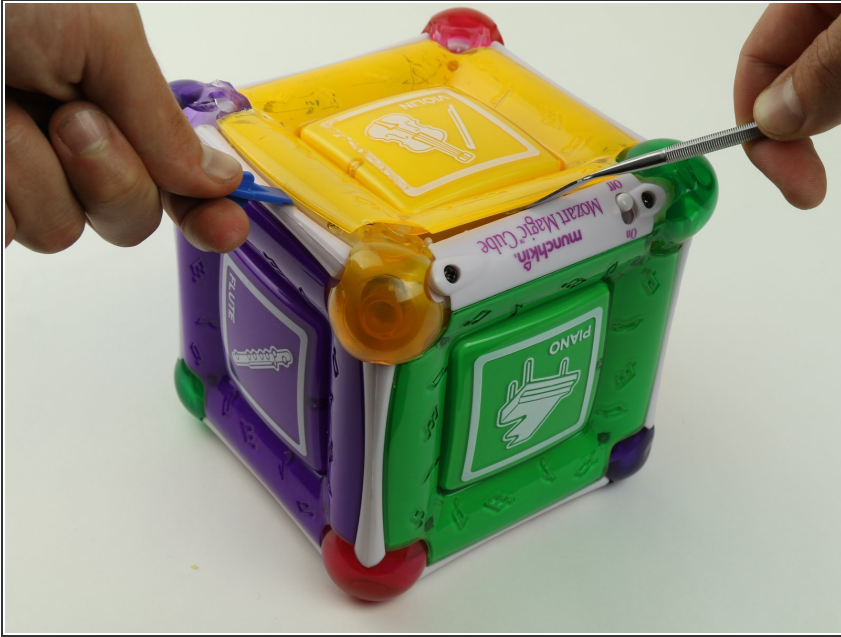
- Gently pull out the battery cartridge and if needed, replace the batteries with 3 AA alkaline batteries.

Step 4



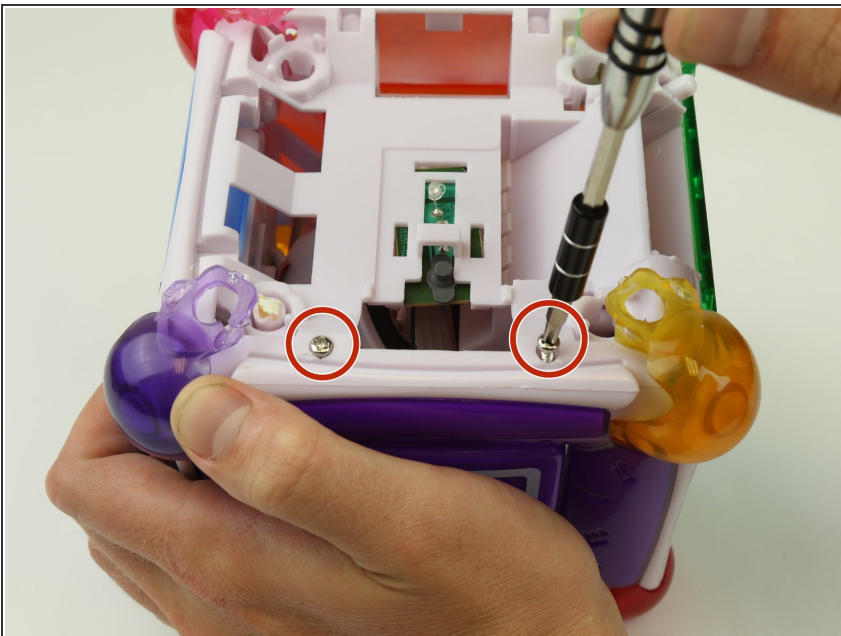
- Starting with the yellow face, insert the metal spudger between the yellow face and the white frame, prying the frame apart.

Step 5



- Insert the metal spudger in the space created by the plastic opening tool between the frame and face of the cube.
- Pry the cube face from the frame.

Step 6



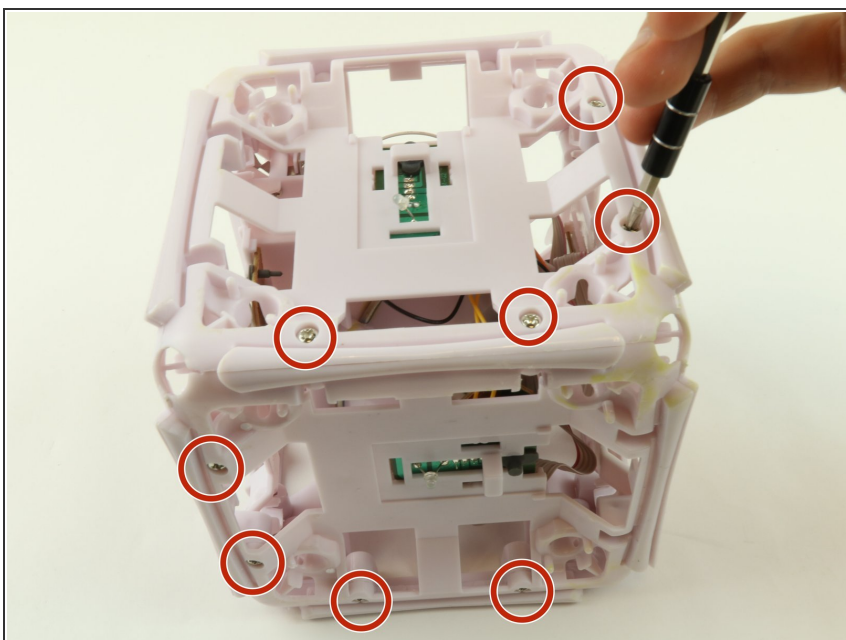
- After removing the square plates, you can unscrew the screws underneath.
- Remove four 6 mm Phillips #2 screws, located on the sides.

Step 7



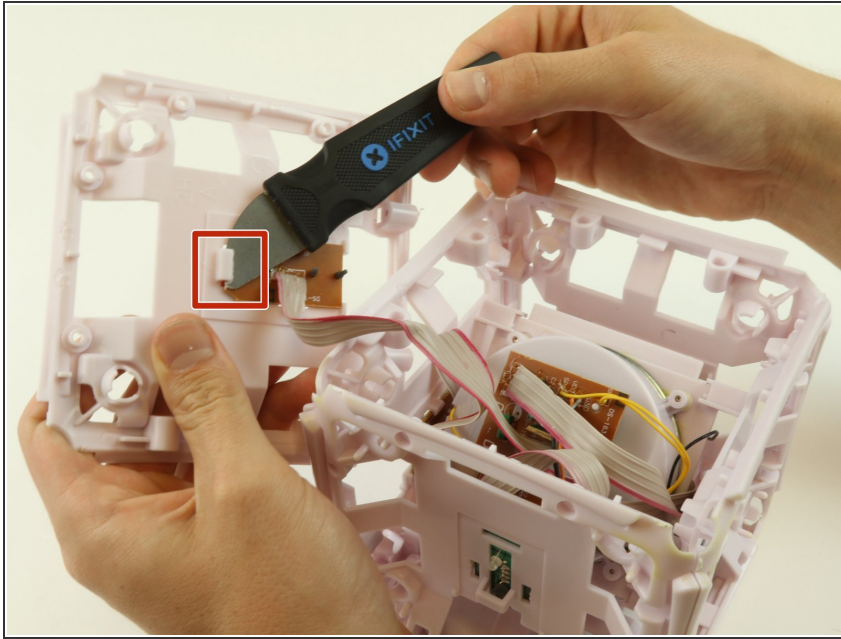
- Remove the rubber corners by simply pulling them off.

Step 8 — Frame Removal



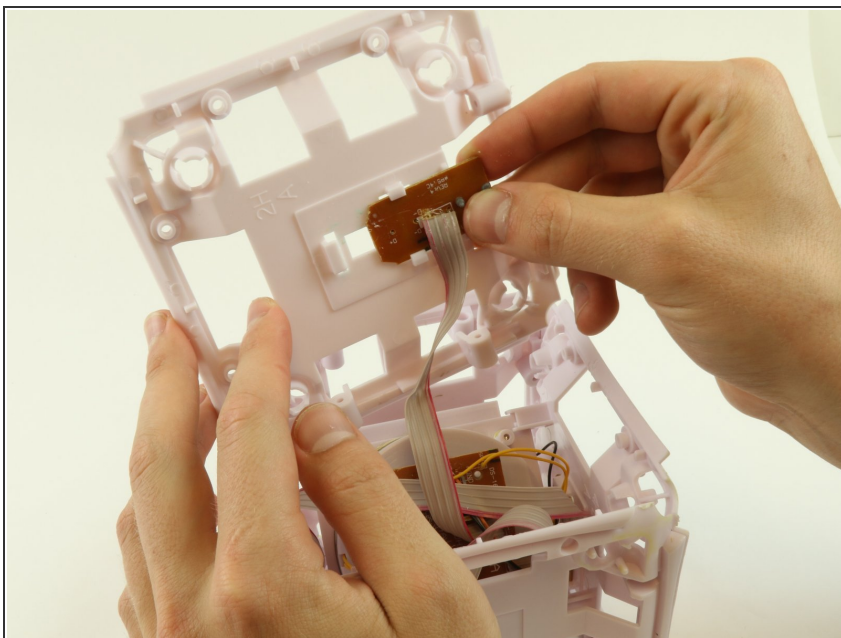
- Remove twenty-four 6 mm Phillips #2 from all 6 sides.
- Once the screws are removed, gently pull apart the frame.

Step 9 — Light



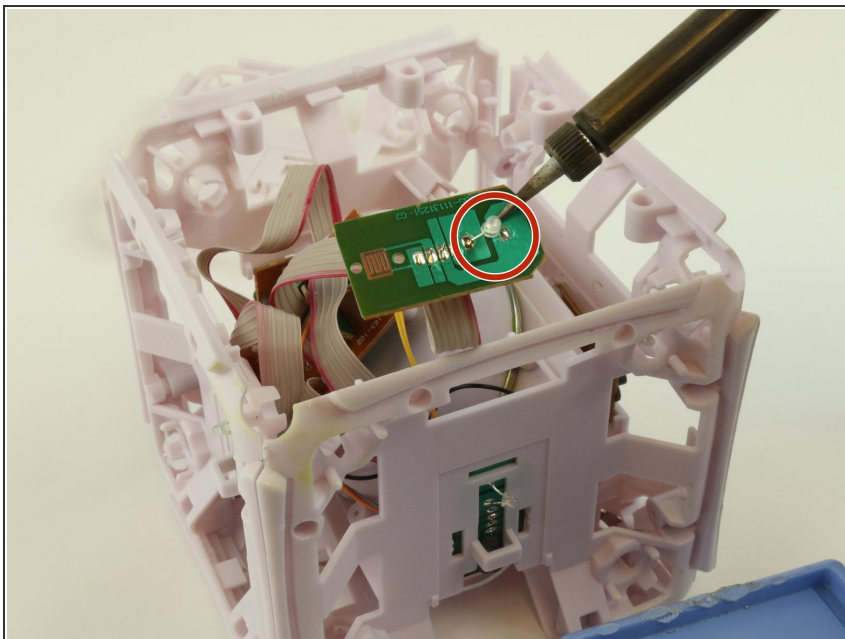
- Flip the frame over so that green motherboard over so that the LED is face down and the brown side of the motherboard is face up.
- Use the Jimmy to remove the glue connecting the motherboard to the white frame.

Step 10



- Slide the motherboard out of the frame.

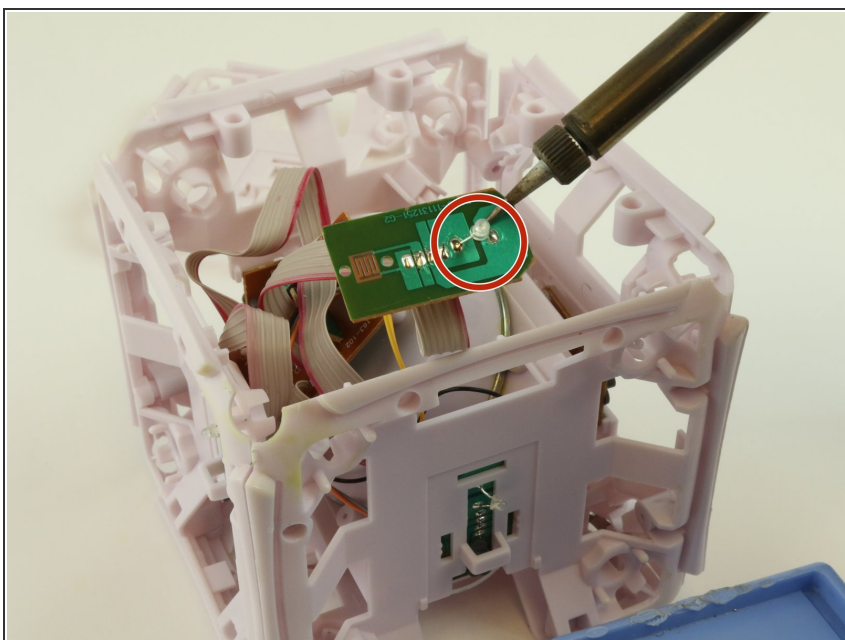
Step 11



- Use the soldering iron to desolder the LED by applying heat to the half sphere like connections.

ⓘ For soldering instructions please see this additional guide [How To Solder and Desolder Connections](#)

Step 12



- Take the new LED and solder the two legs back to the motherboard.

To reassemble your device, follow these instructions in reverse order.