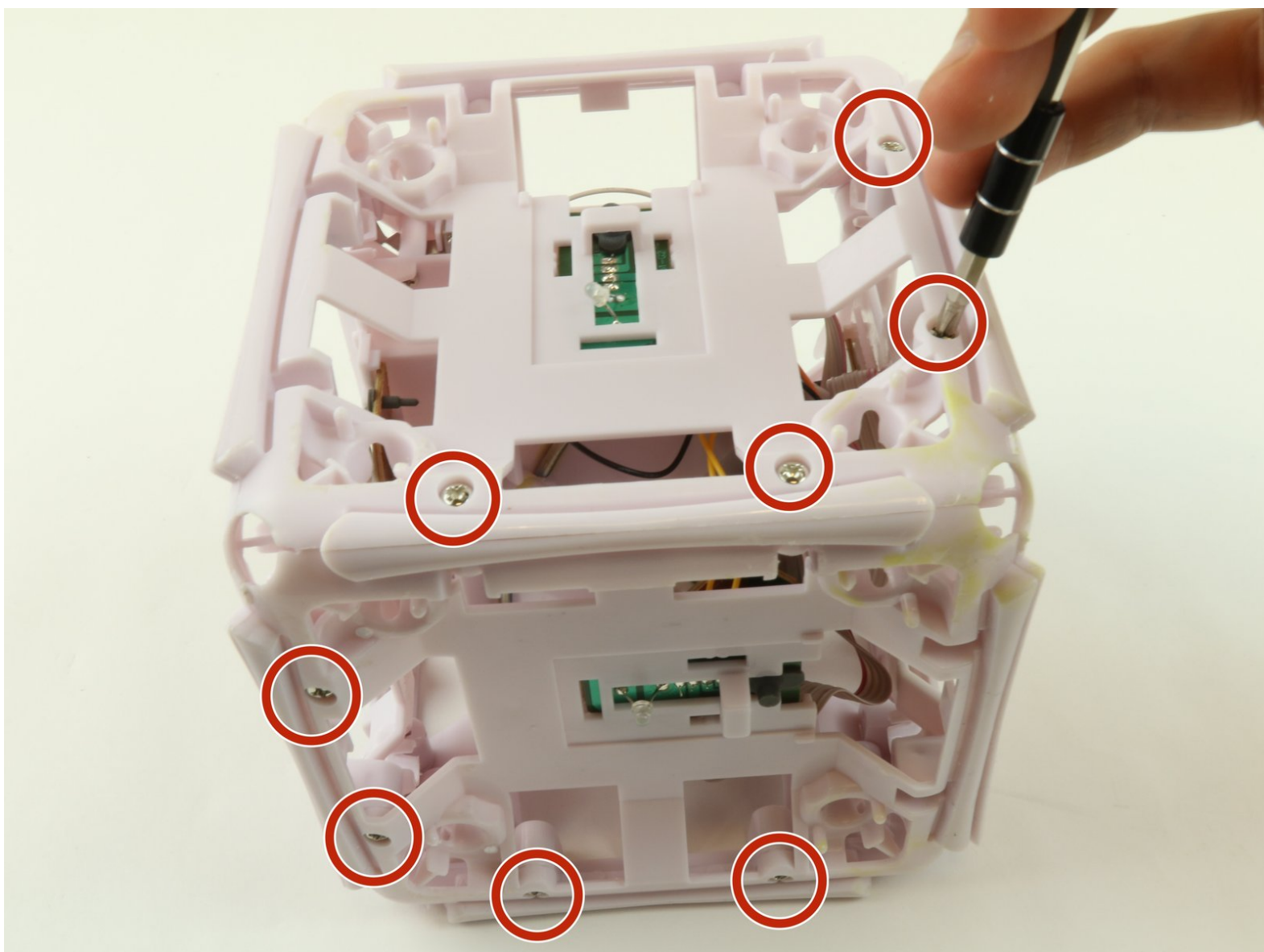




Munchkin Mozart Magic Cube Frame Removal Replacement

This guide will explain to you how to replace the plate of the Munchkin Mozart Magic Cube.

Written By: Ibrahim Aldairem



INTRODUCTION

This will guide you step by step on how you would replace the plate on the game.



TOOLS:

- [Metal Spudger Set](#) (1)
 - [Phillips #2 Screwdriver](#) (1)
 - [iFixit Opening Tools](#) (1)
-

Step 1 — Face plate



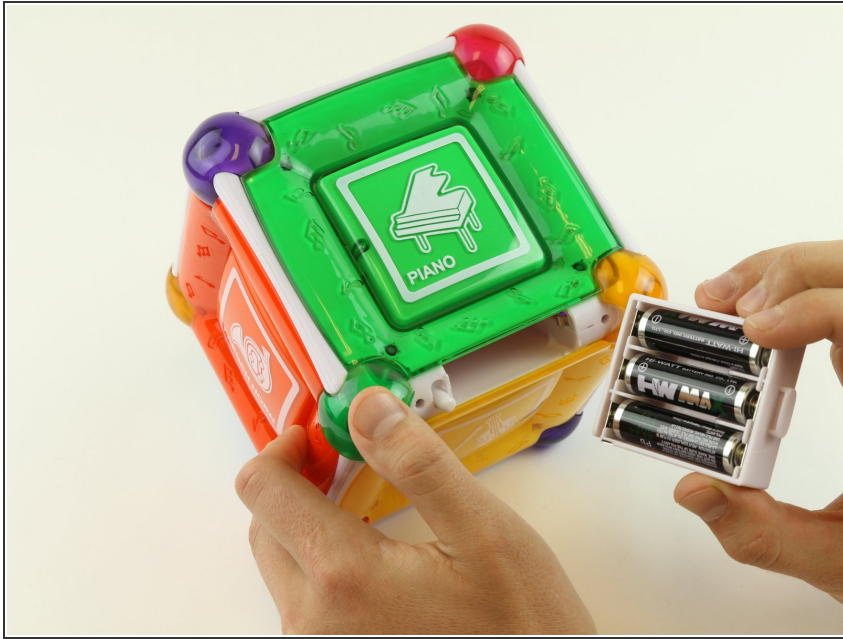
- Remove two 6 mm Phillips #2 screws on either side of the On/Off Plate.

Step 2



- Remove the On/Off switch plate and save the screws so you can use them later to put the plate back on.

Step 3



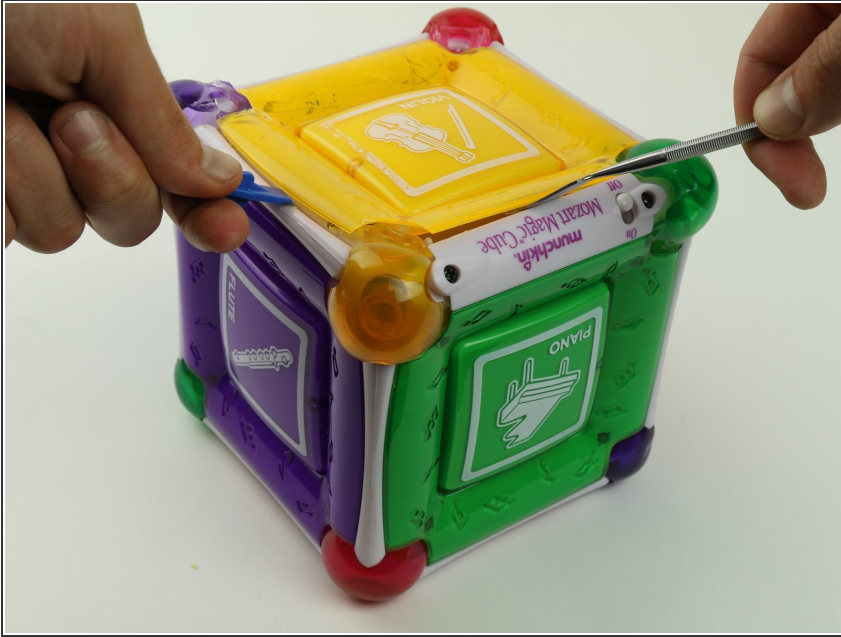
- Gently pull out the battery cartridge and if needed, replace the batteries with 3 AA alkaline batteries.

Step 4



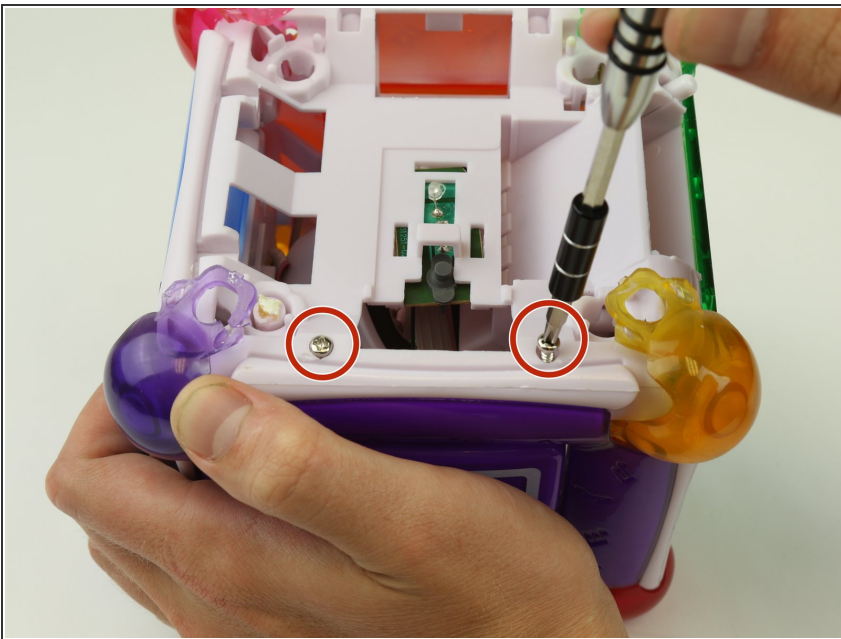
- Starting with the yellow face, insert the metal spudger between the yellow face and the white frame, prying the frame apart.

Step 5



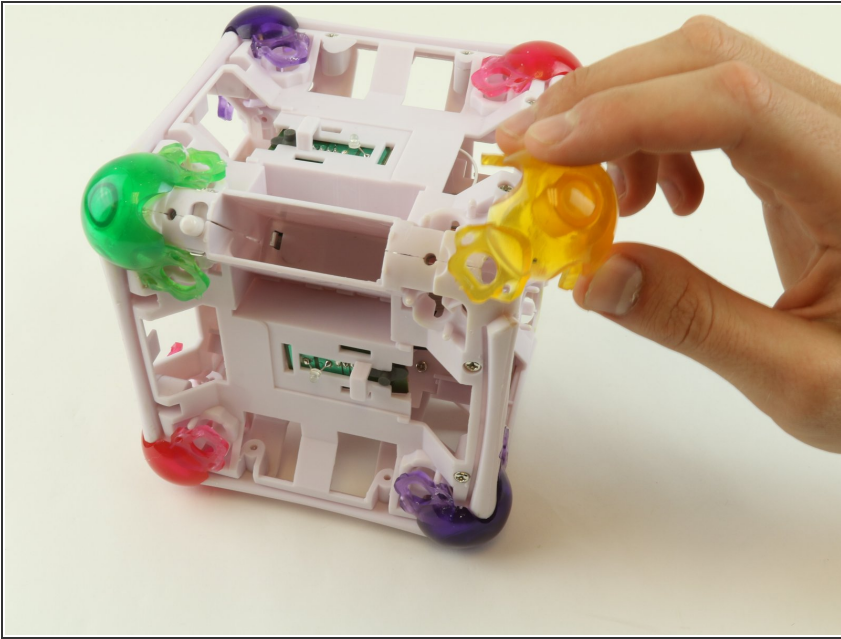
- Insert the metal spudger in the space created by the plastic opening tool between the frame and face of the cube.
- Pry the cube face from the frame.

Step 6



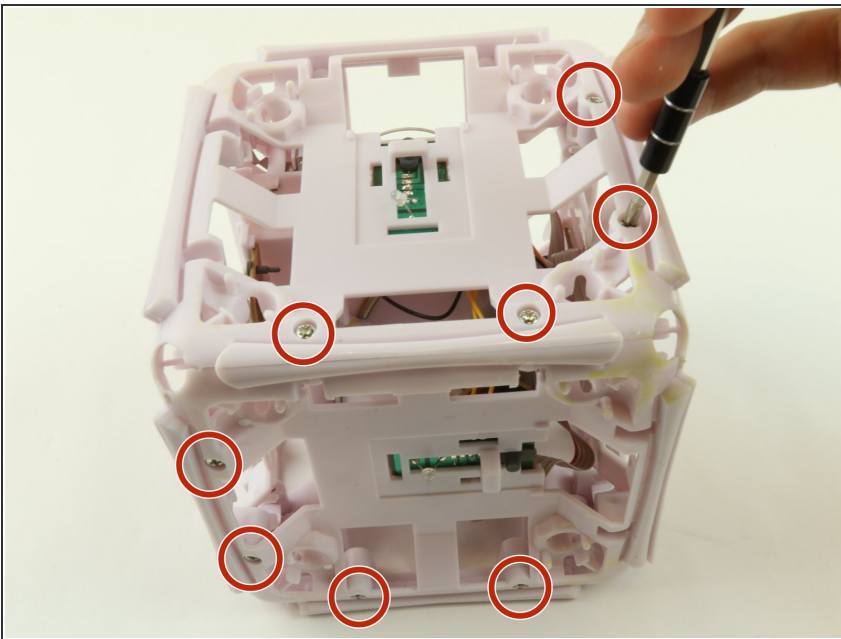
- After removing the square plates, you can unscrew the screws underneath.
- Remove four 6 mm Phillips #2 screws, located on the sides.

Step 7



- Remove the rubber corners by simply pulling them off.

Step 8 — Frame Removal



- Remove twenty-four 6 mm Phillips #2 from all 6 sides.
- Once the screws are removed, gently pull apart the frame.

To reassemble your device, follow these instructions in reverse order.