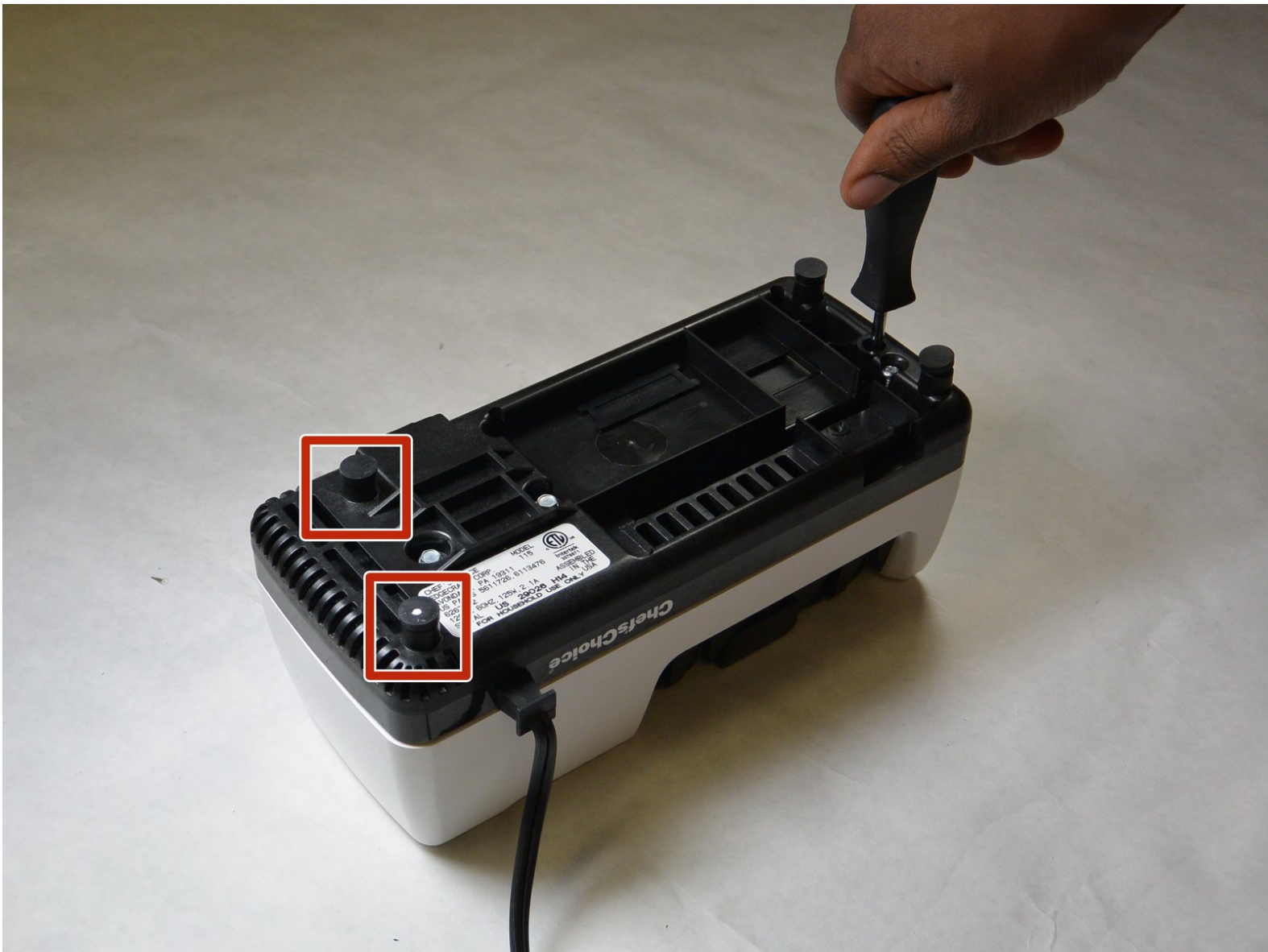




# Disassembling Chef's Choice M115 Case

This is the most important step. You will not...

Written By: Zachary Grounds



## INTRODUCTION

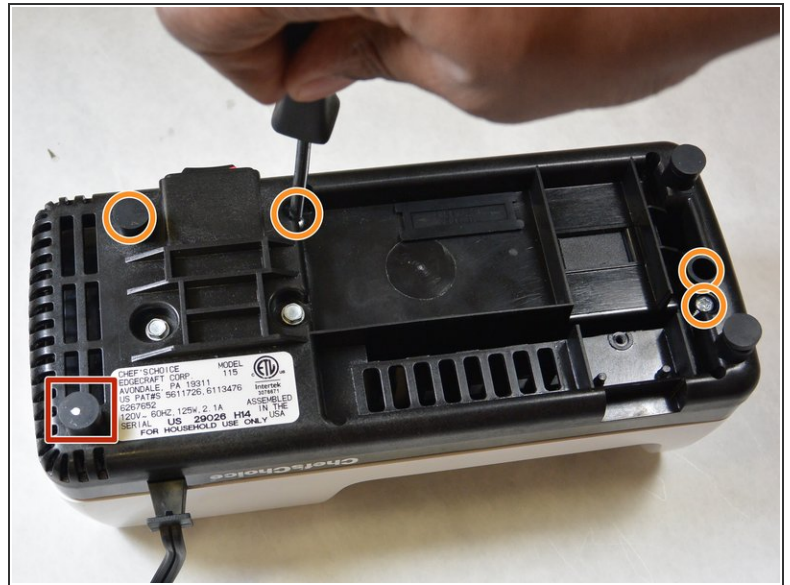
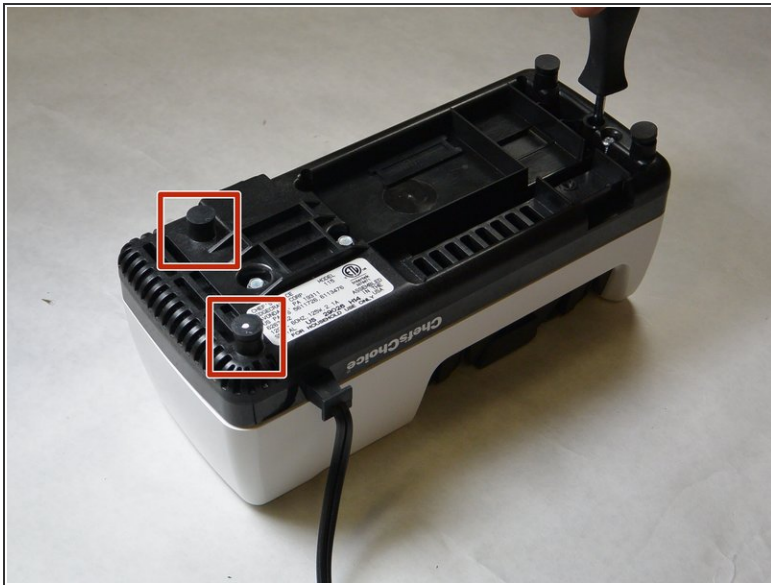
This is the most important step. You will not be able to proceed to any other guides until you successfully open the case. Be sure to layout your magnetic project mat to lay your screws as you remove them and be extra cautious of the sharp edges after you remove the case.



### TOOLS:

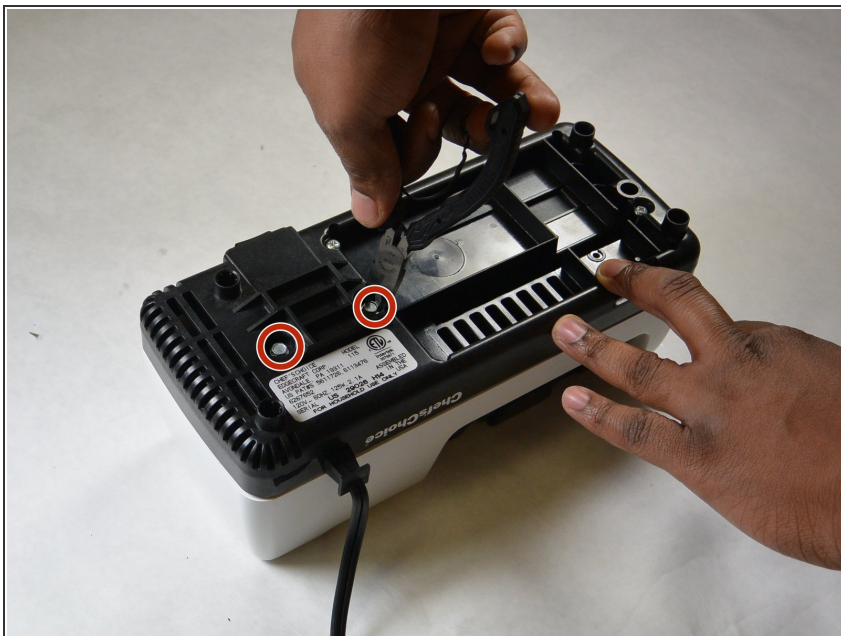
- [Phillips #2 Screwdriver](#) (1)
  - [Slip Joint Pliers](#) (1)
  - [Magnetic Project Mat](#) (1)
-

## Step 1 — Case



- Remove the two rubber feet on the motor side of the device.
- Remove the five Phillips screws from the bottom of the case.
- ⓘ These screws are recessed deep in the device, so a long, thin screwdriver is required.

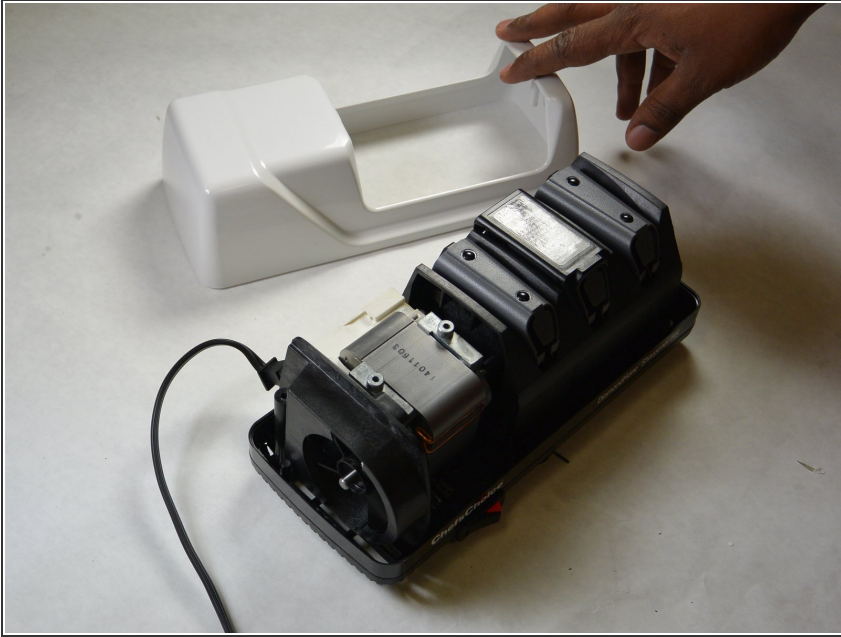
## Step 2



- Remove the two hex-cap screws on the bottom using a pair of pliers.

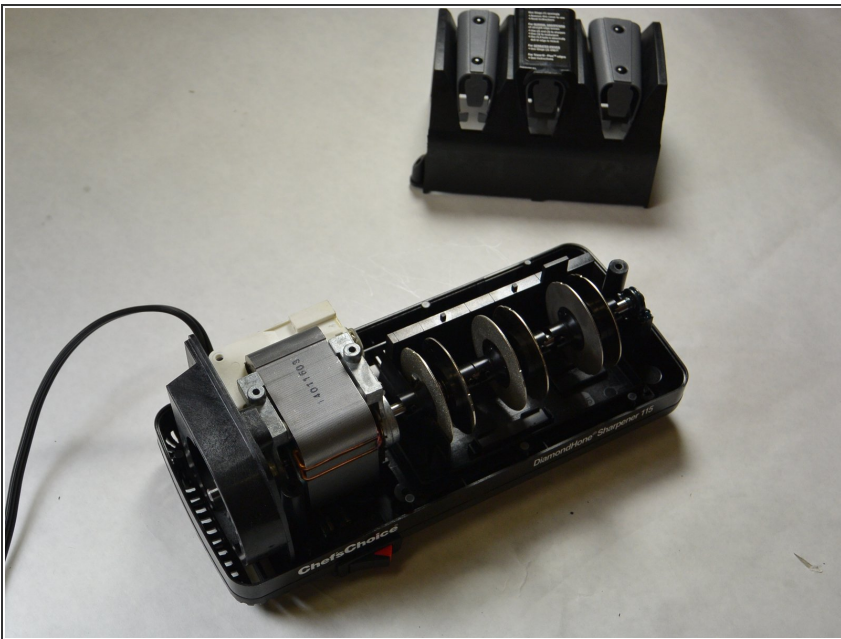


### Step 3



- Carefully flip the device right-side-up while grasping the top and bottom pieces.
- ⓘ The white cover should lift off with no resistance. If it does not, ensure all screws were removed in previous step.

### Step 4



- Remove the sharpener guard by gently pulling up on it.
- ⓘ If the sharpener guard does not come off easily, ensure all screws were removed in step 1.

To reassemble your device, follow these instructions in reverse order.