

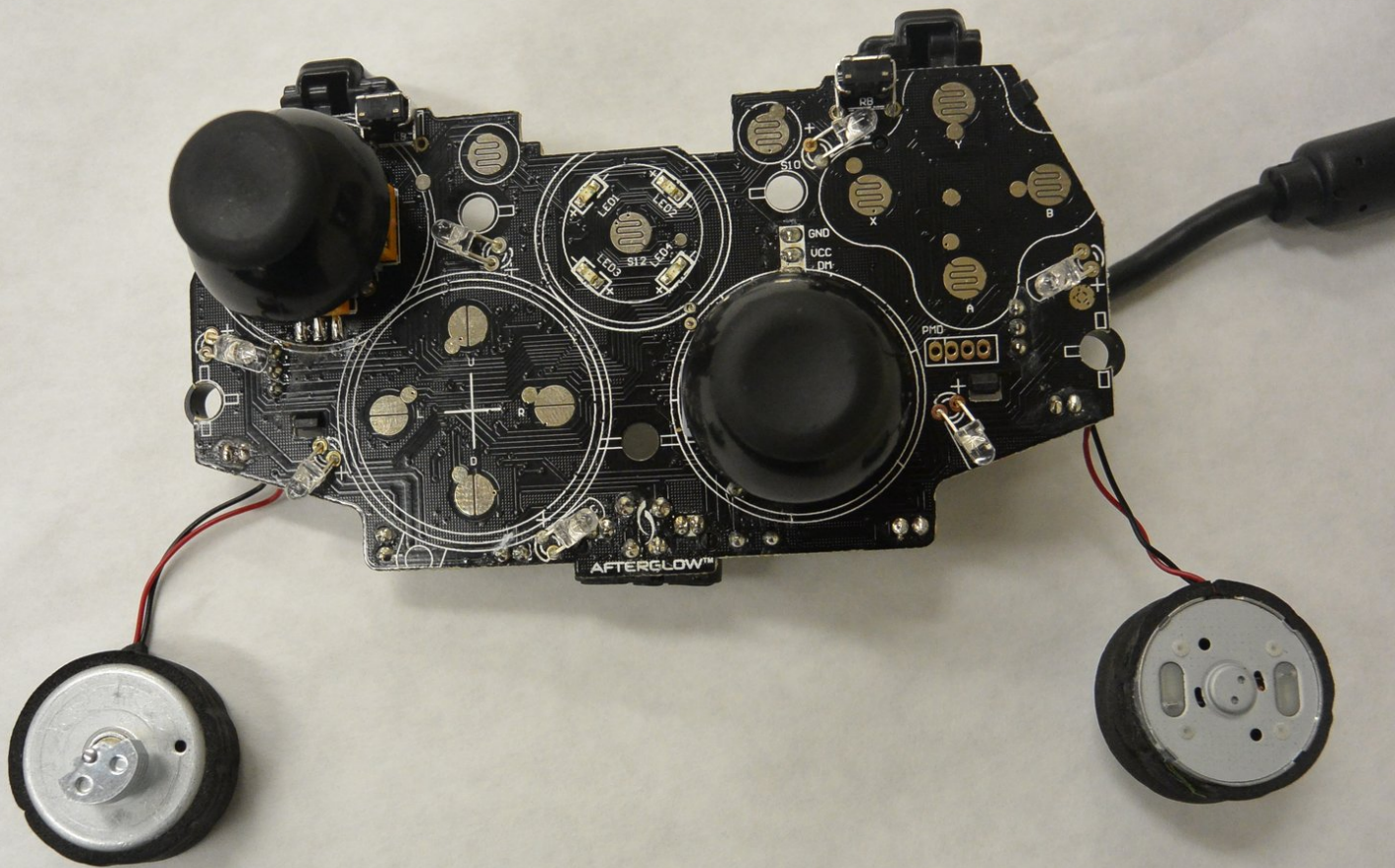


# PDP Afterglow Wired Xbox 360 Controller

## Vibration Motors Replacement

These are the motors in the base of the controller that vary the vibrations sent through the controller and into the hands of the user.

Written By: Austin Miller



# INTRODUCTION

Caution: This guide includes using a soldering iron and can damage your controller or your hand if not used properly.



## TOOLS:

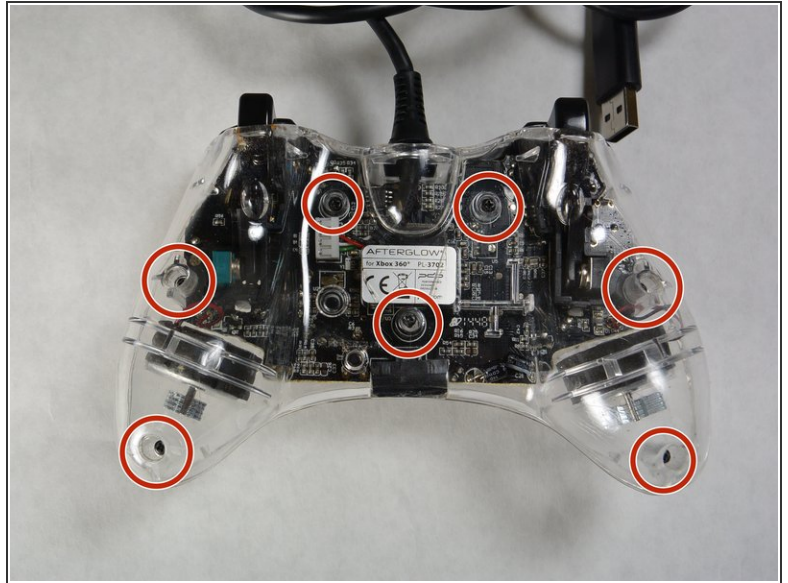
- [Soldering Iron](#) (1)
- [Solder](#) (1)
- [Solder Vacuum](#) (1)



## PARTS:

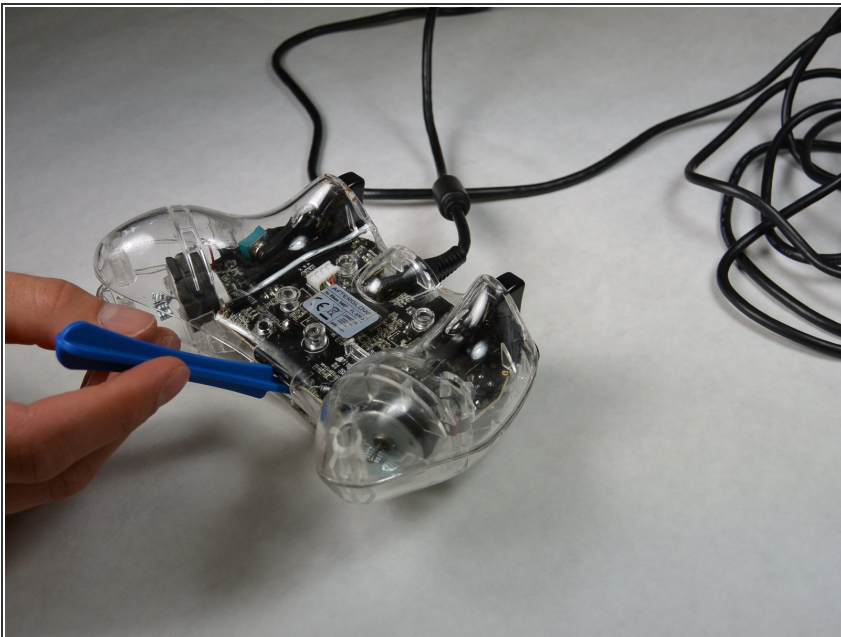
- [Rumble Motor](#) (1)

## Step 1 — Case



- Loosen the seven 11 mm Phillips #0 screws located on the back of the controller.

## Step 2



- Using a plastic opening tool, pry the back cover from the front.
- ⓘ The covers should separate without needing a plastic opening tool, but in some cases you may need to use it.

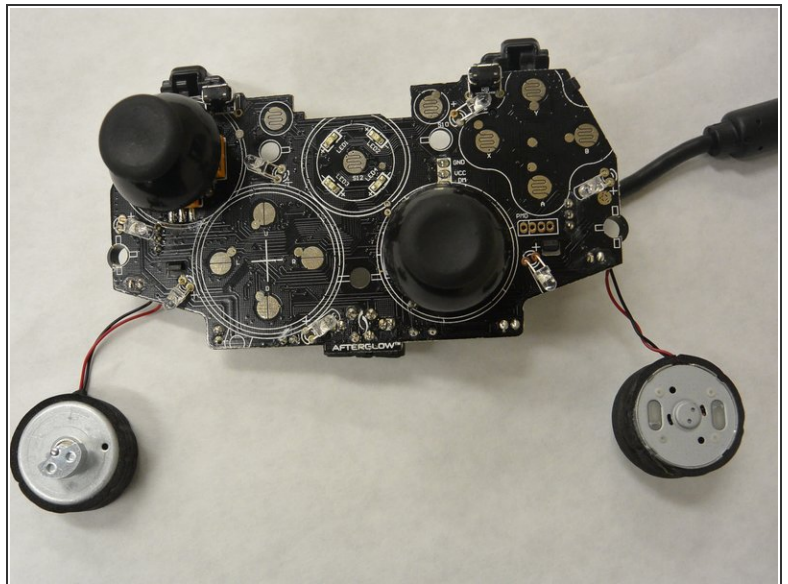


### Step 3



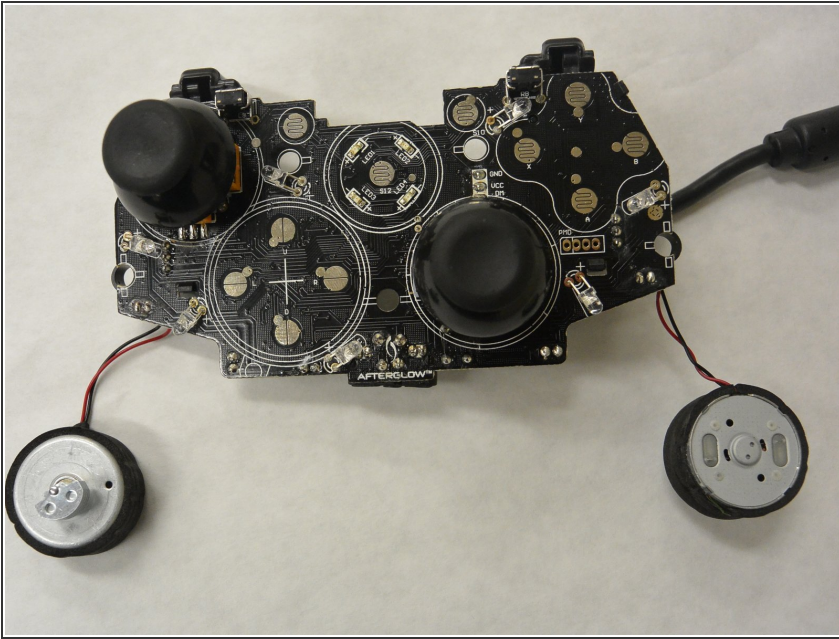
- Remove the top cover from the bottom and place next to each other.

### Step 4 — Vibration Motors



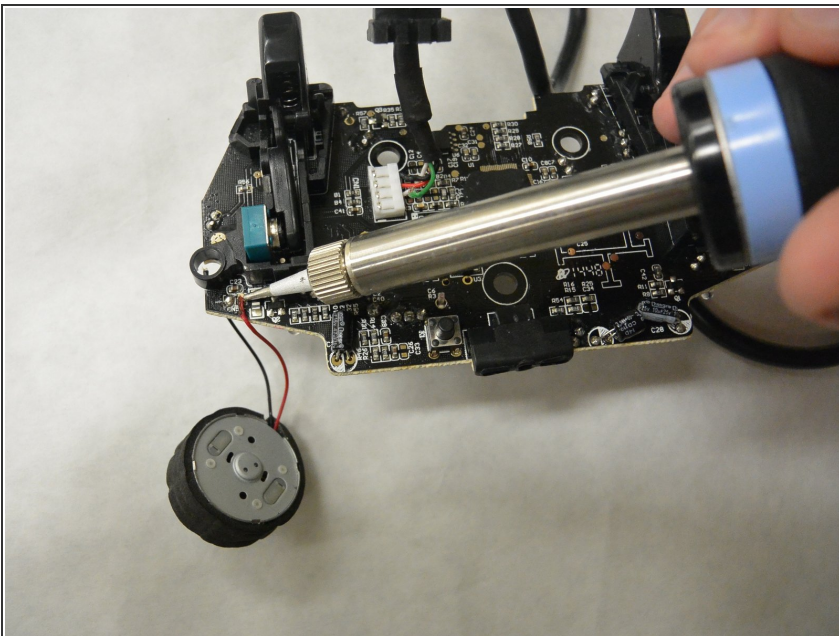
- Lift the Logic Board and remove the rumble motors from the base of the controller.

## Step 5



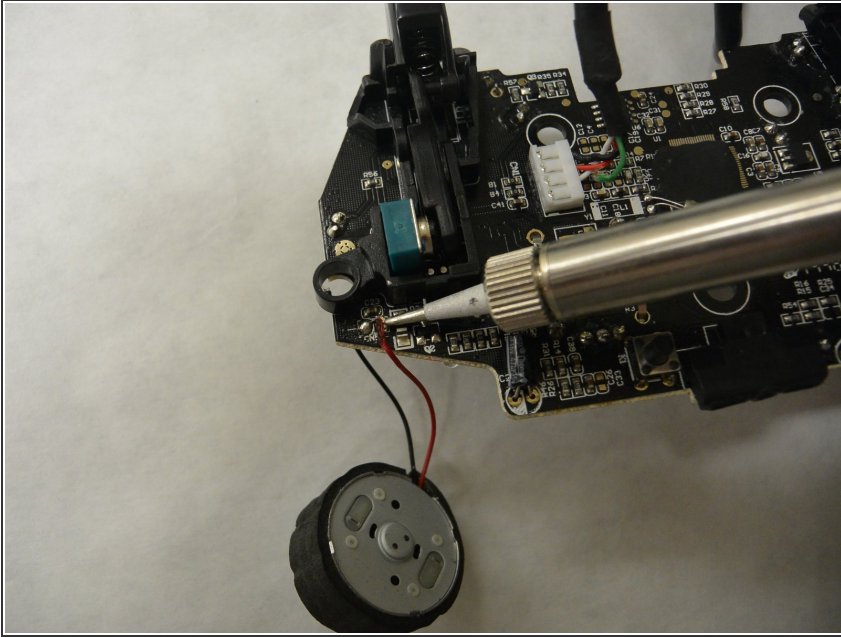
- i** The rumble motors are located in the bottom right and left hand corners of the controller.
- Find where the power (red) wire and ground (black) wire are connected to the logic board. The power (red) wire should be on the left while the black (ground) wire is on the right.

## Step 6



- !** The soldering iron is very hot and can harm you or the device if used improperly.
- Take the soldering iron after it has been heated up and place it where the ground (black) wire is connected to the logic board.
- Let it heat up and remove some of the solder with the solder vacuum.
- Do the same for the power (red) wire.

## Step 7



- Now take the new rumble motor and place the power (red) wire on the right hole where the (+) sign is.
- Take some solder and seal the hole so that the solder is completely covering the (+) hole.
- Do the same for the ground wire.

To reassemble your device, follow these instructions in reverse order.