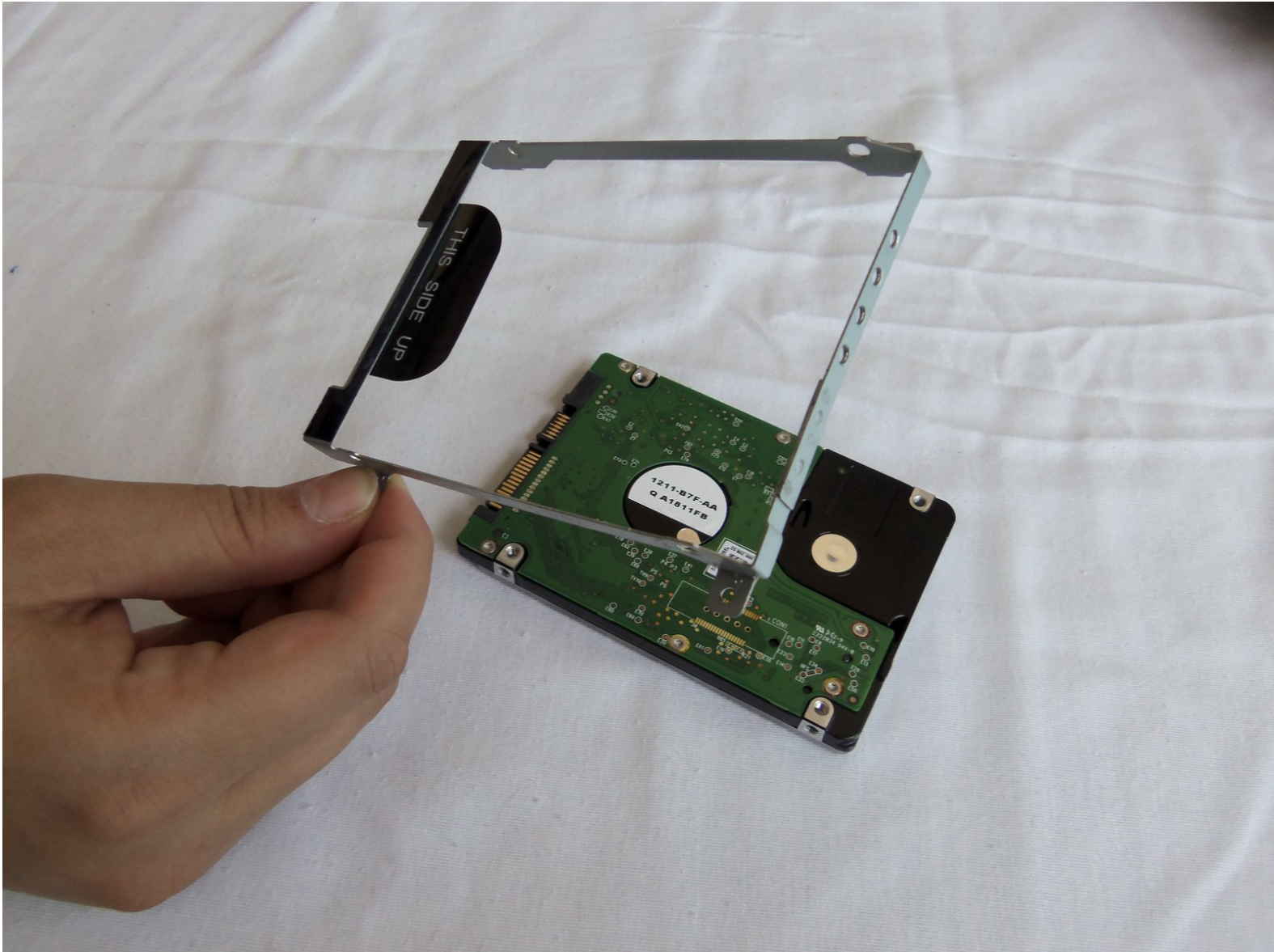




# Dell XPS 17 L702X Hard Drive Replacement

Written By: Shin Sul





## TOOLS:

- [Phillips #1 Screwdriver](#) (1)



## PARTS:

- [1 TB SSD](#) (1)
- [250 GB SSD](#) (1)
- [Crucial MX500 500 GB SSD](#) (1)
- [Crucial MX500 2 TB SSD](#) (1)

## Step 1 — Battery



- ❗ Before you begin, be sure to turn off your laptop and unplug it from the outlet.
- Flip over the laptop so that the bottom battery compartment faces upwards.

## Step 2



- Slide the tab below the battery to the left and hold the tab in place.



## Step 3



- While holding the tab, lift the battery out of its compartment.
- Release the tab after removing the battery.

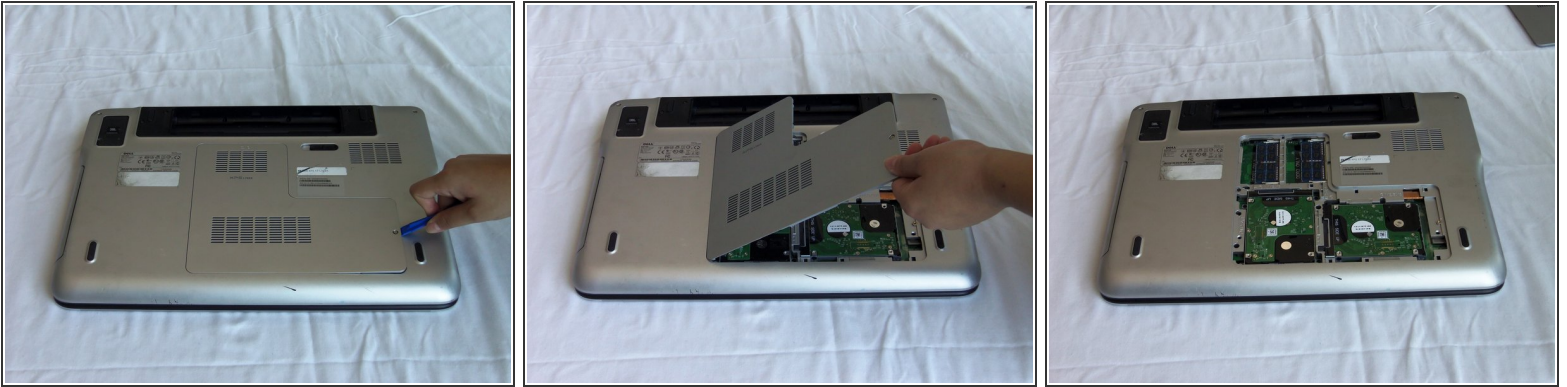
## Step 4 — Hard Drive



- Loosen the module cover screw with a Phillips screwdriver.

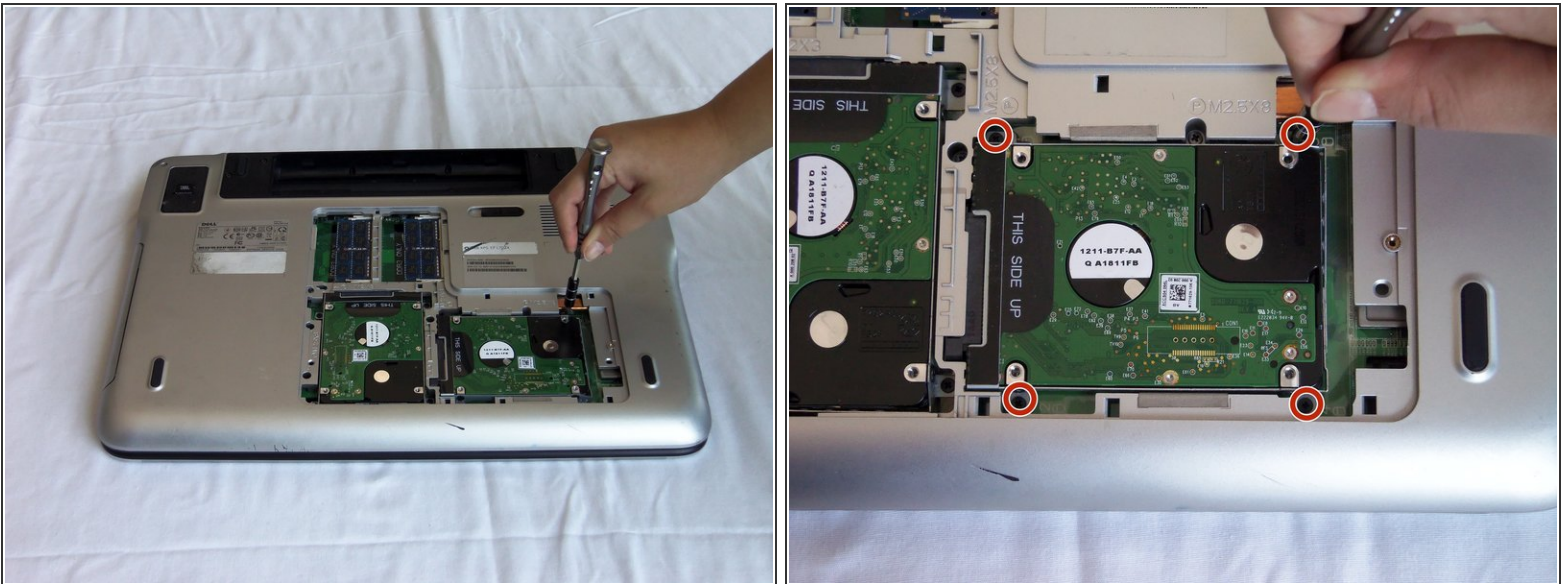
⚠ The screw is attached to the cover; do not force it out.

## Step 5



- Lift the module cover by inserting a plastic opening tool into the crevice near the screw and lift upwards.

## Step 6



- Remove the four 4mm Phillips screws fastening the first hard drive.

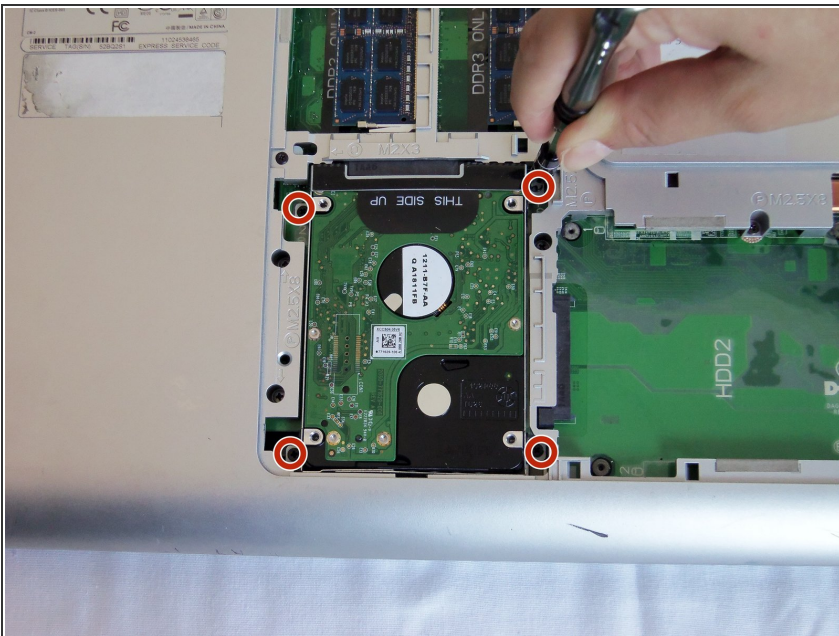


## Step 7



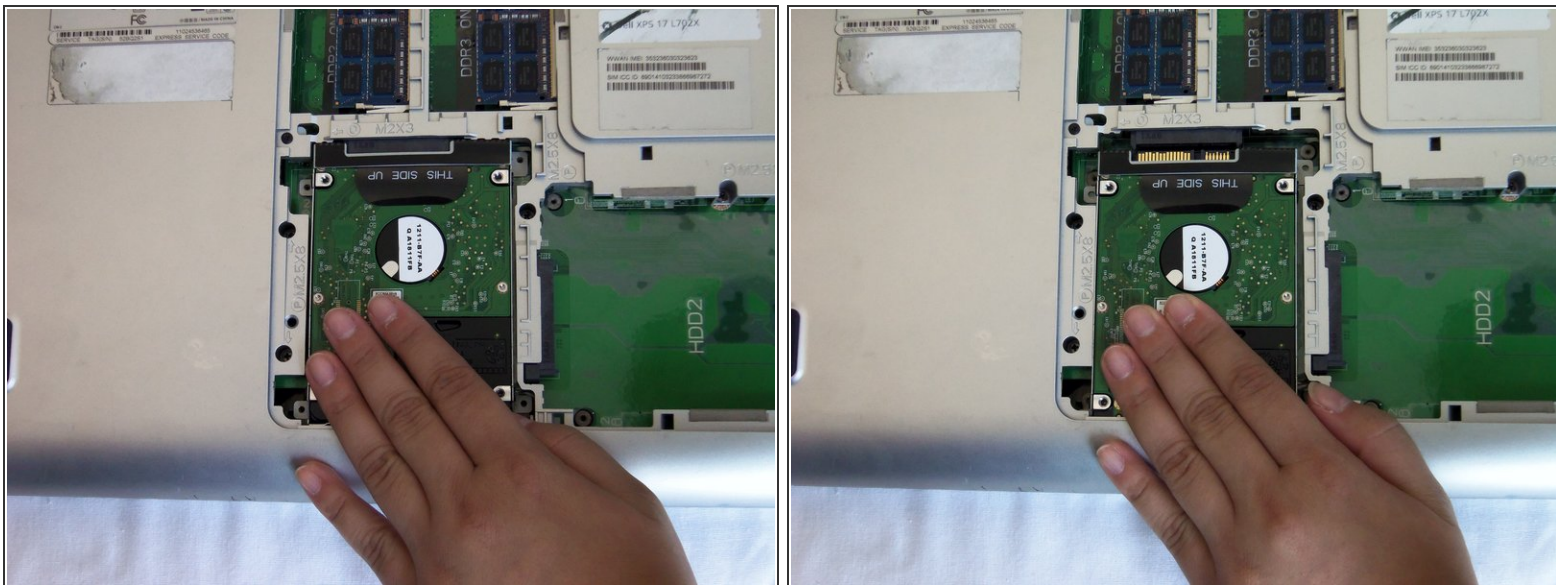
- Slide the hard drive with your hand towards the hole where the back panel assembly screw was located (in step 5) to disconnect it.
- Lift the hard drive up to remove it from the case.

## Step 8



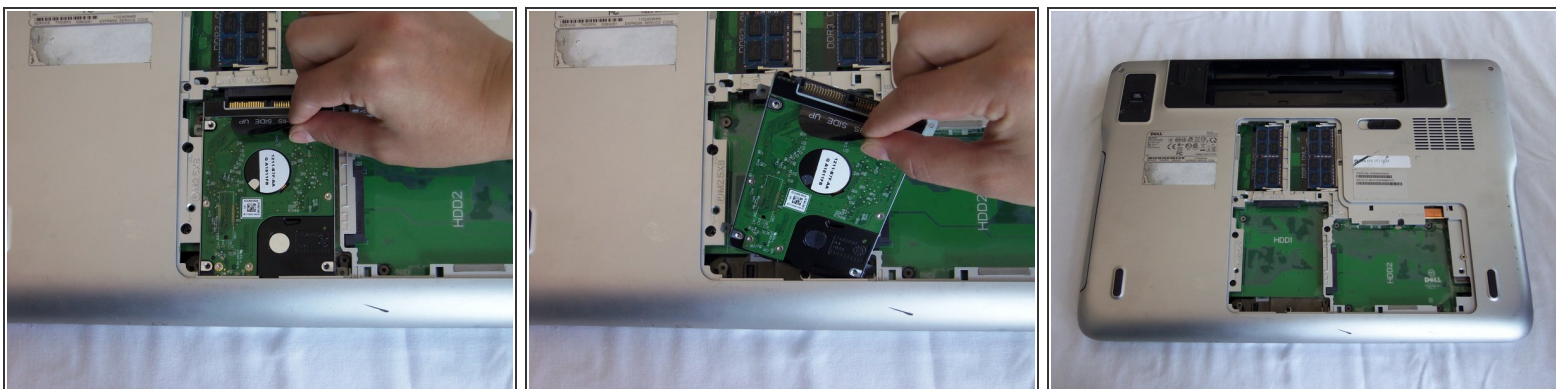
- Remove the four 4mm Phillips screws on the second hard drive.

## Step 9



- Slide the hard drive towards the edge nearest you to disconnect it.

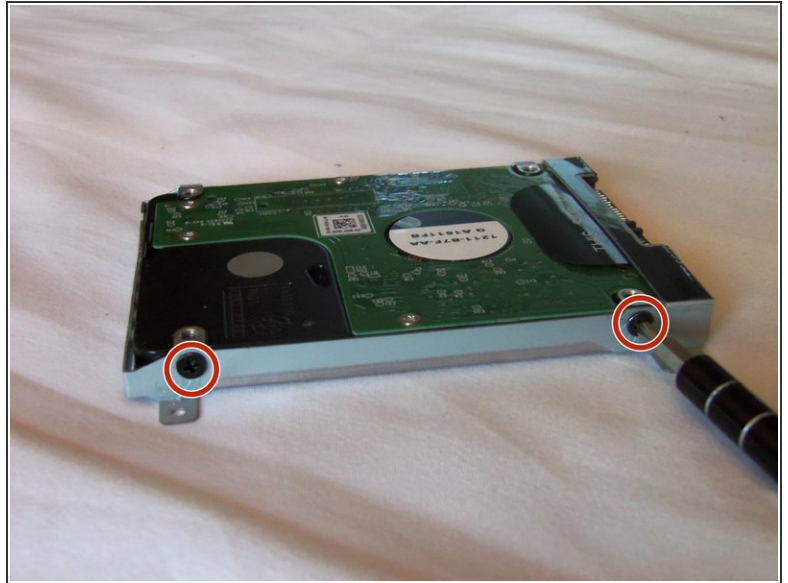
## Step 10




- Using the tab that says "THIS SIDE UP," pull away from the laptop to remove the hard drive.



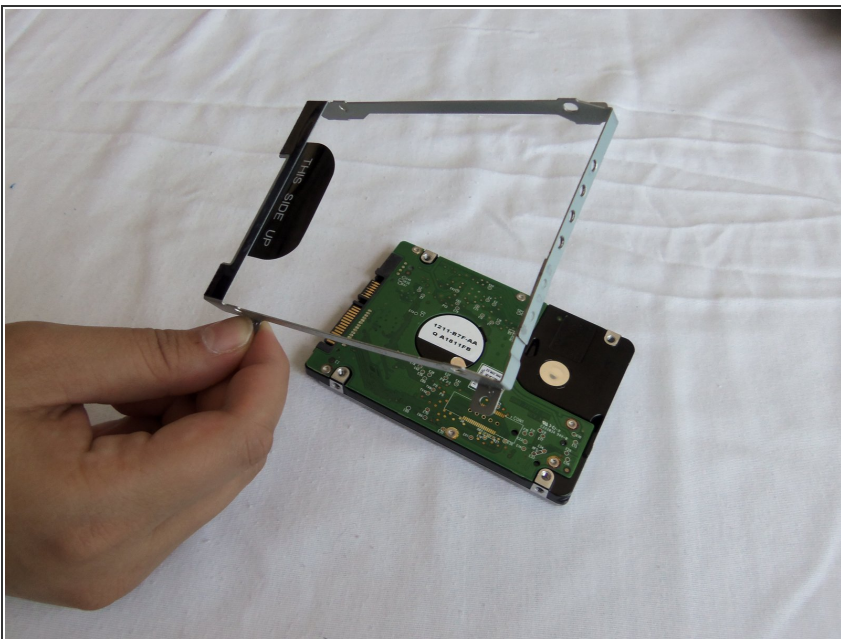
## Step 11



 Repeat this step for each hard drive.

- Unscrew the two 4mm screws from each side of the hard drive casing with a Phillips screwdriver.

## Step 12



- Remove the hard drive casing.



To reassemble your device, follow these instructions in reverse order.