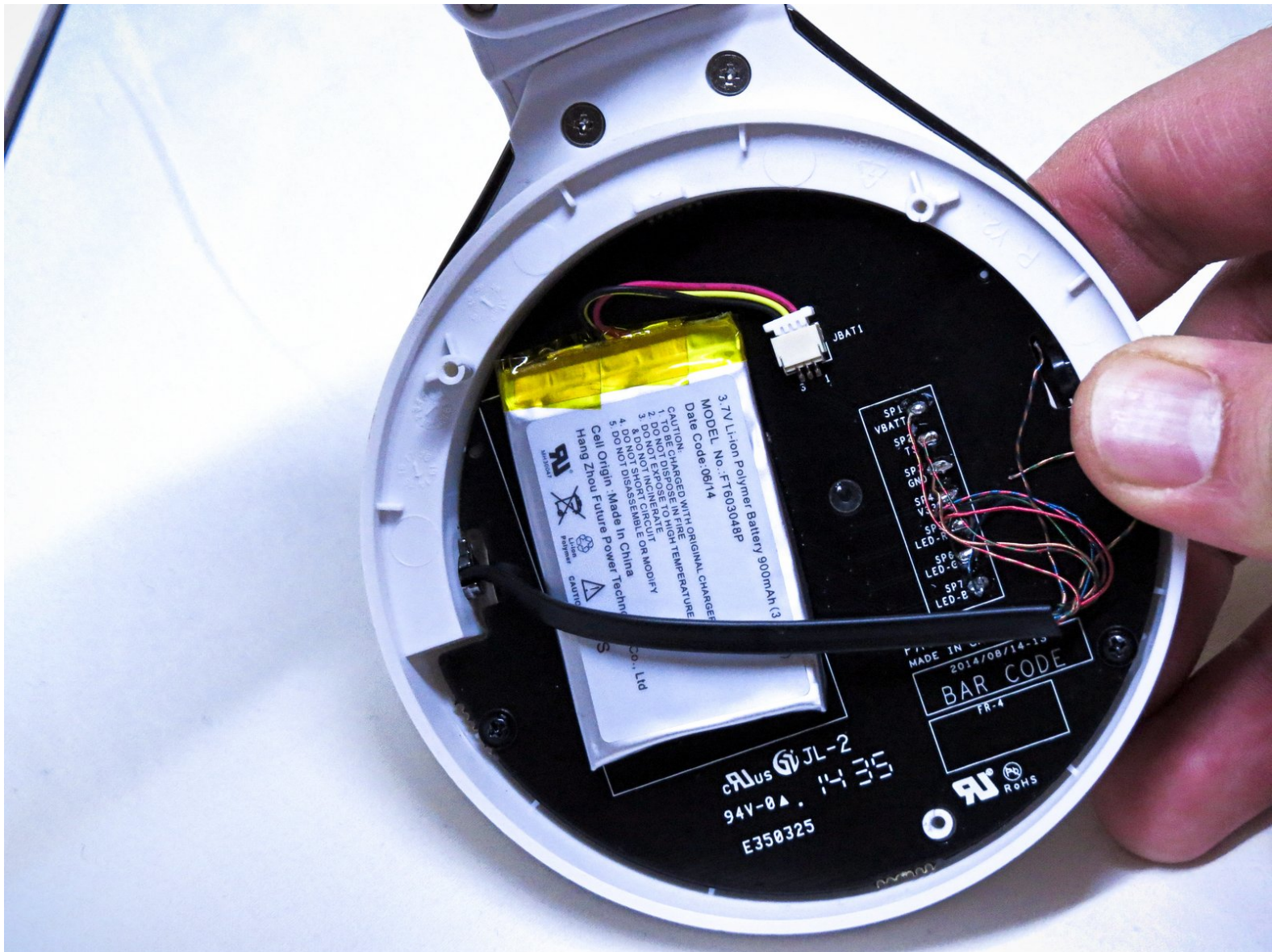




PDP Afterglow Fener Battery Replacement

In this guide I am going to teach you how to replace your dead/broken battery.

Written By: Murat Terzi



INTRODUCTION

First we are going to take apart the headset to get inside to where the battery is. Then we are going to remove our old battery and put in our new one.



TOOLS:

- [Phillips #000 Screwdriver](#) (1)



PARTS:

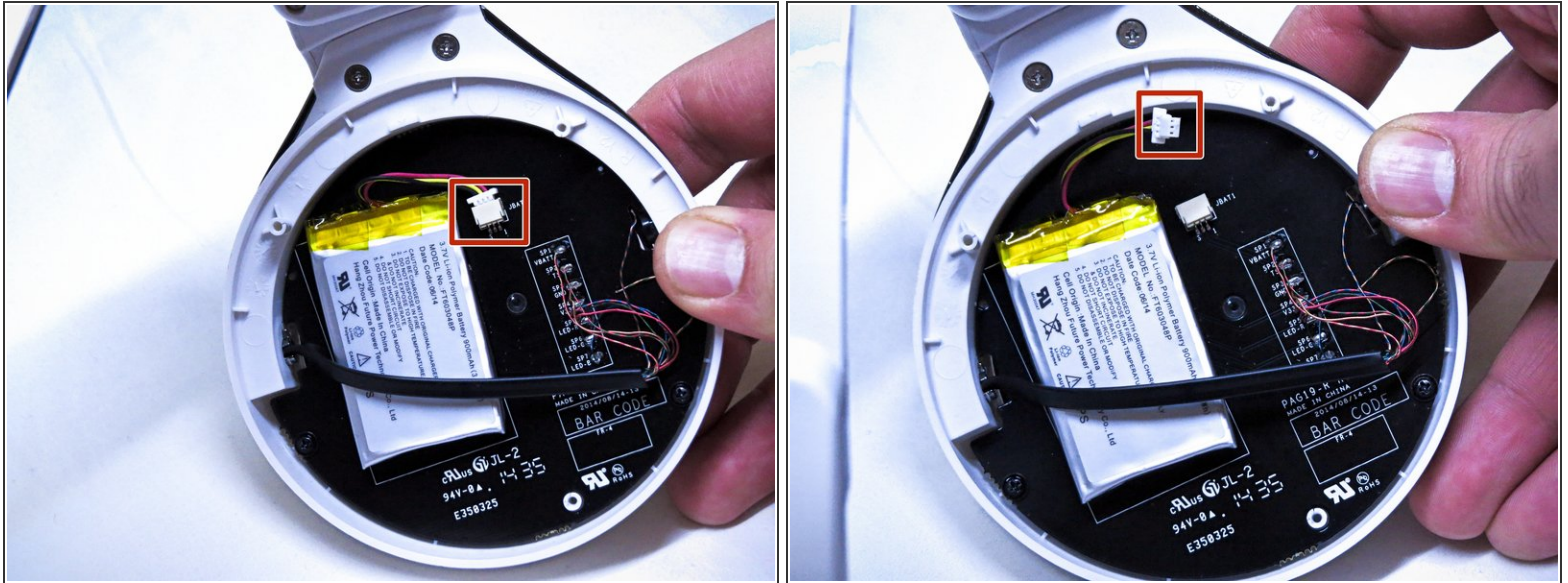
- [3.7V Li-Ion Poly Battery](#) (1)

Step 1 — Battery



- Gently pull off your left and right ear pad. For further instructions on how to carefully do this please go to this [guide](#).
- For each of the red circled screws, take your J000 screwdriver and unscrew the screws.

Step 2



- This shows what your device looks like on the inside behind the part that you just removed from the headset.
- In the red square is the connection between the battery and the headset.
- Gently pull the wires that are connected to the white part in the red square.
- Now that your battery is not connected to anything you can take it out of the headset.

To reassemble your device, follow these instructions in reverse order.