



Logitech UE Boom Bluetooth Adapter Replacement

Replace bluetooth adapter in the case that the original one has been damaged or came dead on arrival.

Written By: Jose Cruz Arinaga





TOOLS:

- [Metal Spudger](#) (1)
 - [Soldering Iron](#) (1)
 - [64 Bit Driver Kit](#) (1)
-

Step 1 — D-ring



- Turn the device over. The D-ring will be on the left face of the speaker when viewing the device from this orientation.


Step 2



- Lift the handle on the D-ring and unscrew it.
- Remove the D-ring.

Step 3 — Bluetooth Adapter



 Any repairs made from this point forward will void your device's warranty.

- Holding the speaker upright, wedge the metal spudger in between the casing and the speaker. Gently pry open the tabs as they are easily broken.

Step 4



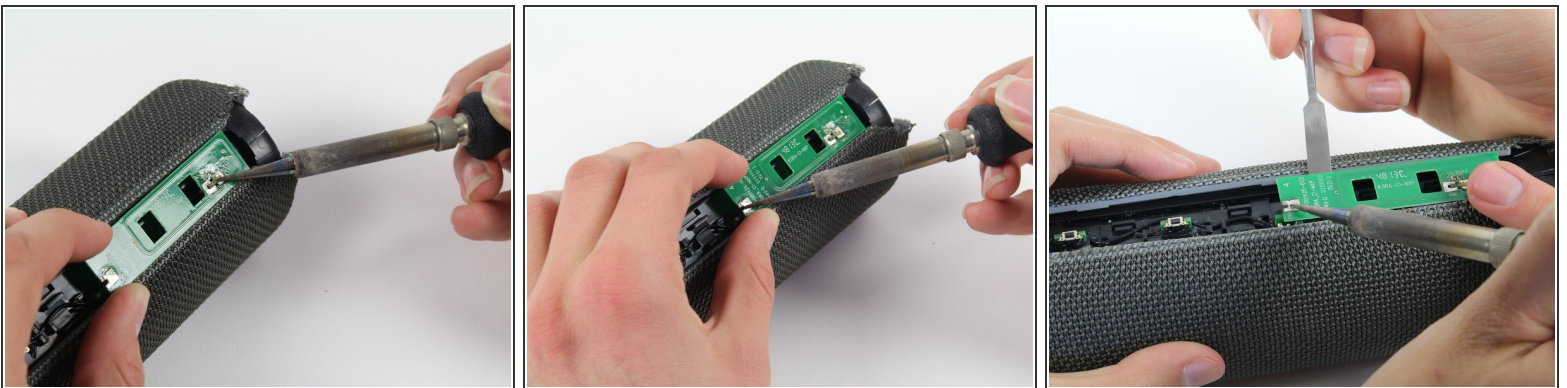
- Find the part of the casing that covers the volume controls. Wedge the metal spudger under this and pry open all of the tabs as in the previous step.
- Repeat for the bottom of the speaker and pry the casing open with your fingers.


Step 5



- Using the Phillips J0 head screwdriver, unscrew the four silver 9 mm screws.
- Do the same for the two black 7 mm screws.

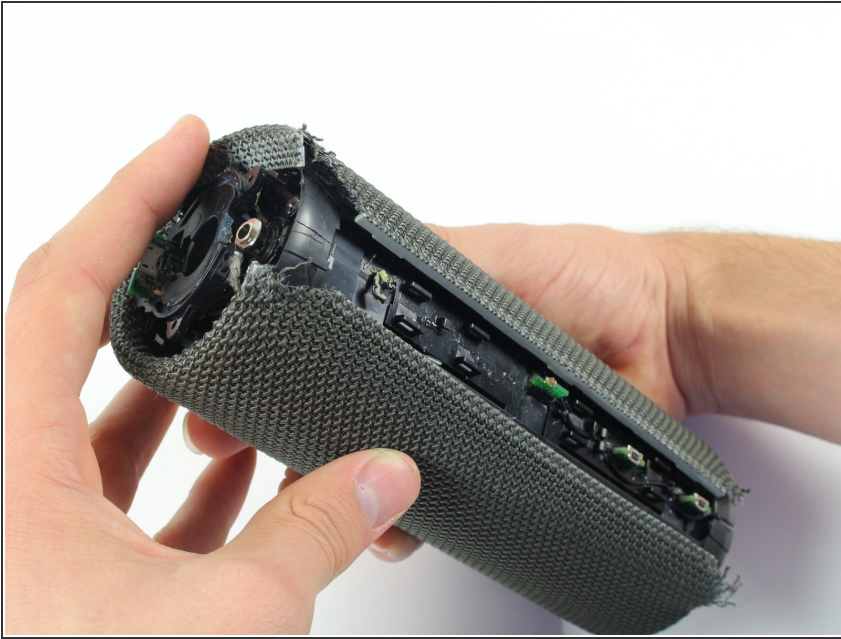
Step 6



 This next step involves the use of a hot soldering iron. Remember to be careful during this step since it can be easy to burn yourself.

- Using a soldering iron, de-solder the two ends of the switch plate.

Step 7



- With the switch plate disconnected, remove it and your device should now look like this.

To reassemble your device, follow these instructions in reverse order.