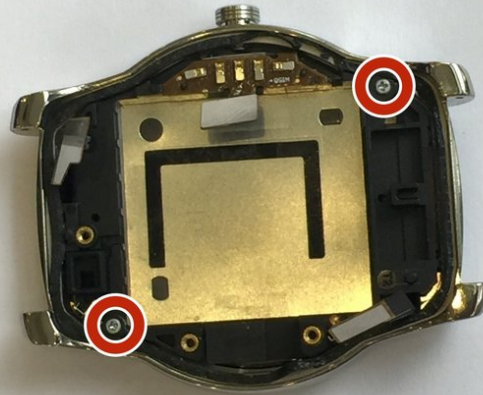




LG Watch Urbane Screen Replacement

Replace broken or dead screen in your LG Watch Urbane.

Written By: Luis Guinand



INTRODUCTION

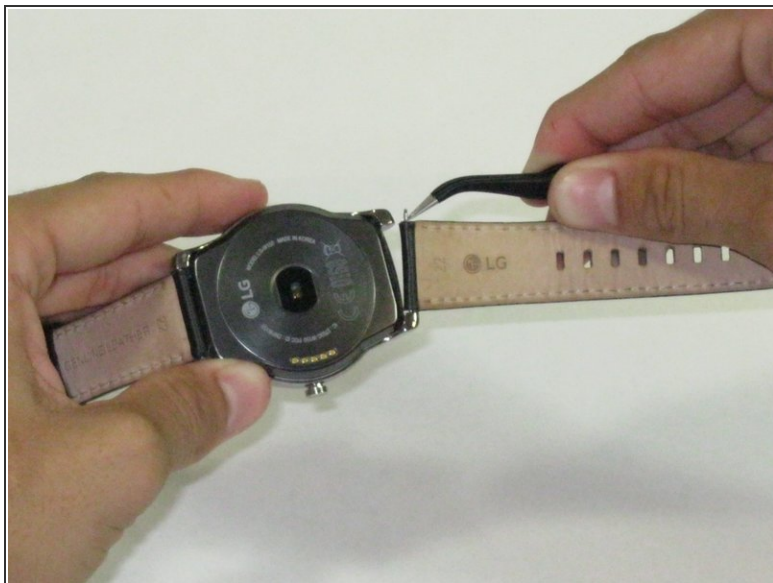
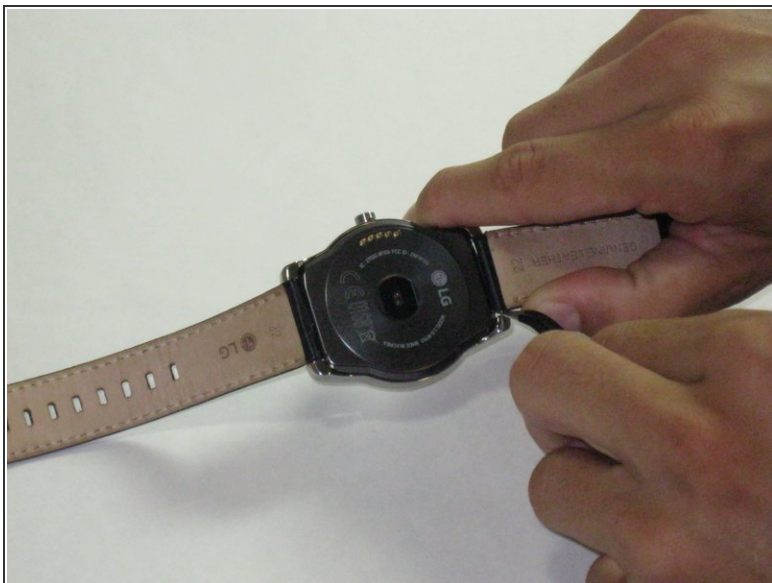
In order to replace your screen you are going to need the proper tools. There are screws that need to be unscrewed and components that need to be pried open carefully. The tools needed will be plastic opening tools, PH #000 screwdriver and tweezers. With these prepared everything should be ready to start the replacement of the screen for the LG Watch Urbane.



TOOLS:

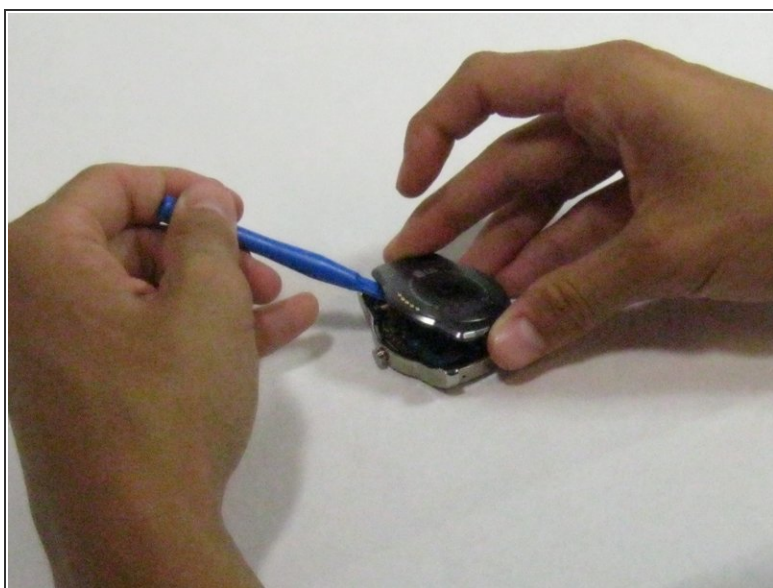
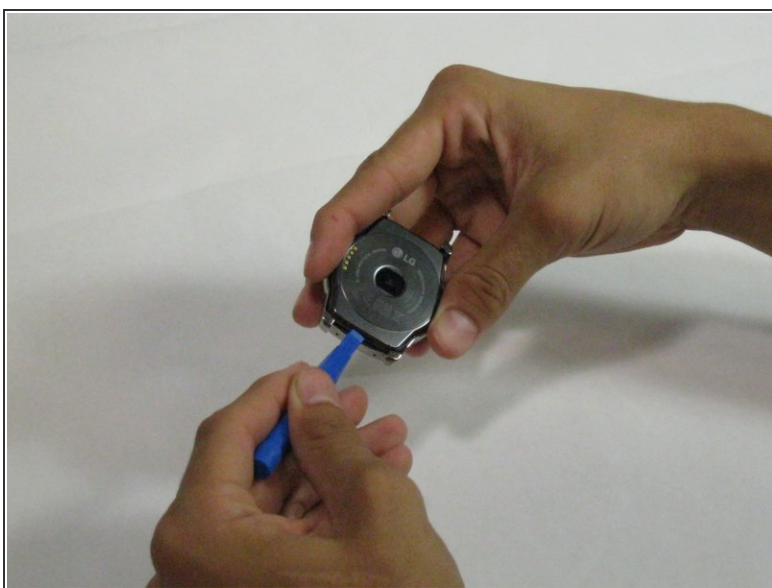
- [Tweezers](#) (1)
 - [Phillips #000 Screwdriver](#) (1)
 - [iFixit Opening Tools](#) (1)
-

Step 1 — Battery



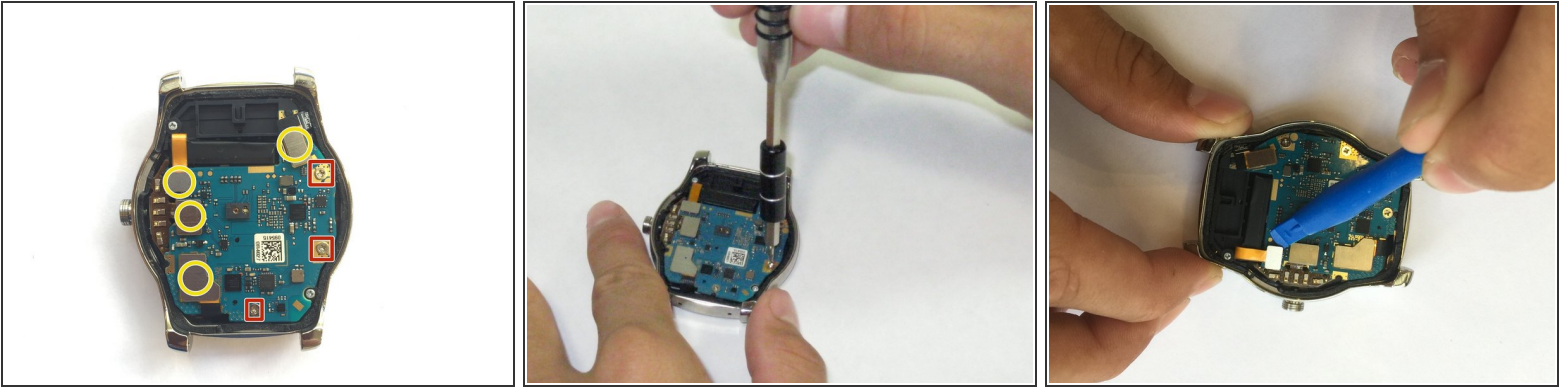
- Push on the band in order to expose the pins
- Using **tweezers**, remove the pins, one on each side, in order to only leave the face of the watch.

Step 2



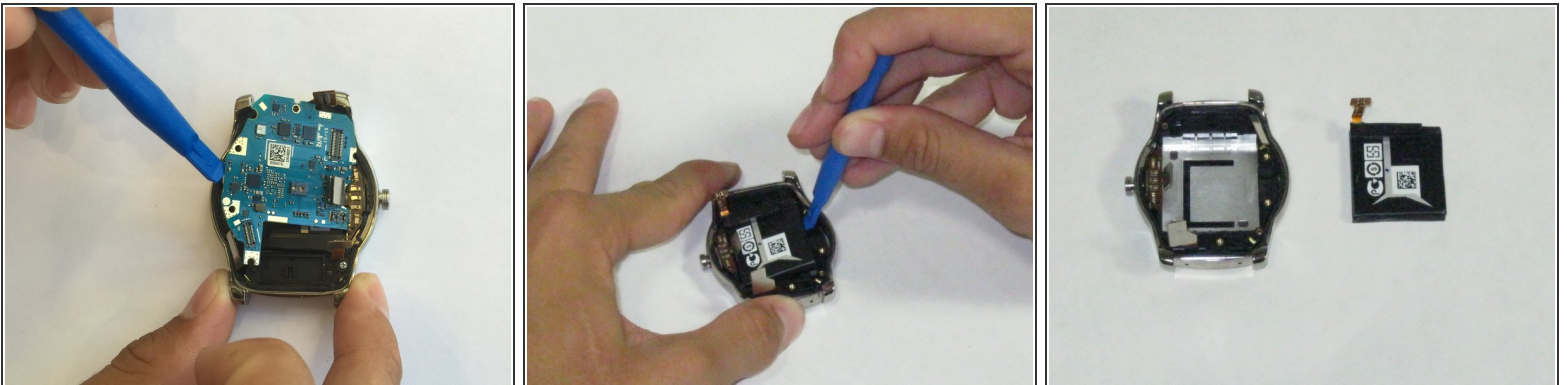
- Using plastic opening tools, carefully pry open the back cover of the the watch.
- ① Use the little hatch on the bottom portion of the watch in order to easily pry open the watch

Step 3



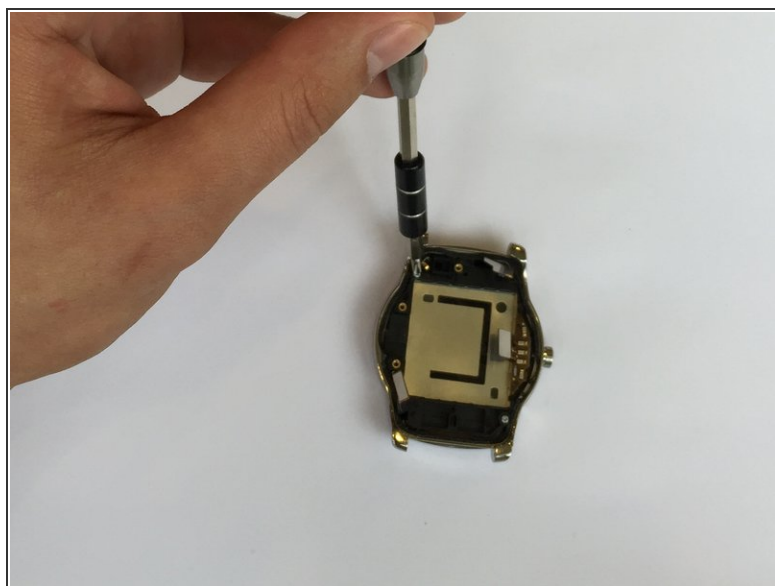
- Using a PH000 screwdriver, remove the three screws in order to release the motherboard from the watch.
 - ⓘ Do not lose the three screws! Keep them somewhere you will remember! A magnetic mat can help with this. [iFixit Magnetic Mat](#)
- Using plastic opening tools, remove the four connectors attached to the motherboard

Step 4



- Using the plastic opening tools, carefully lift up the motherboard.
- **IGNORE THIS STEP IF ONLY REMOVING MOTHERBOARD:** Use the plastic opening tools to carefully remove the battery

Step 5 — Screen



- Now that you have removed the motherboard and battery, it is time to remove the dock connector.
- Using a PH000 screwdriver, remove the two screws in order to release the dock connector from the watch.
- ⓘ Do not lose the two screws! Keep them somewhere you will remember! A magnetic mat can help with this. [iFixit Magnetic Mat](#)

Step 6



- Once the screws are removed, the dock connector is free to be moved.
- Gently lift the dock connector away from the frame and you will now be able to see the screen.
- The watch's screen is stuck to the back of the glass with an adhesive so be tedious when pulling it off.

To reassemble your device, follow these instructions in reverse order.