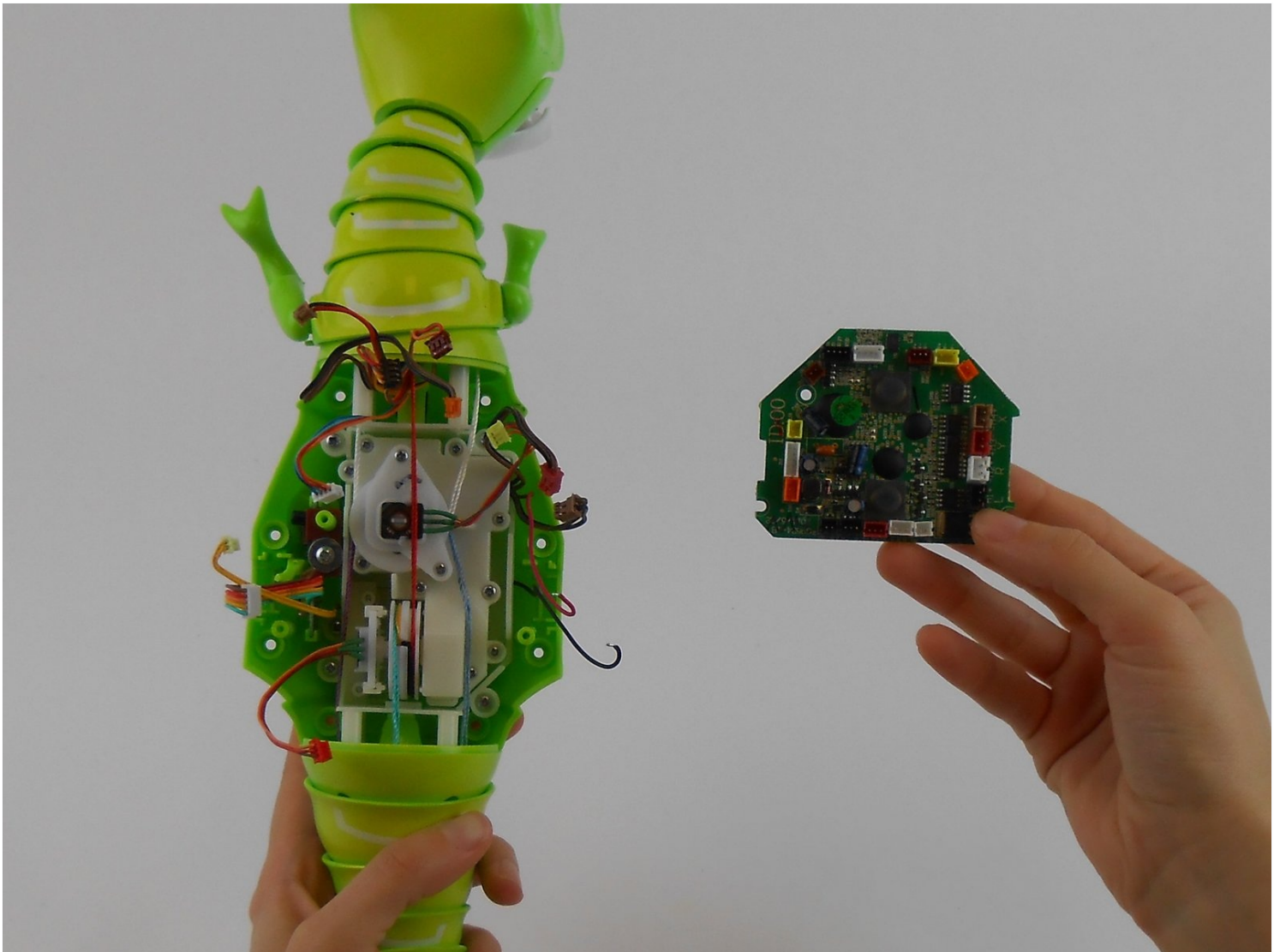




Zoomer Dino Boomer Main Circuit Board Replacement

This guide shows how to safely separate the...

Written By: Desiree DesJardins



INTRODUCTION

This guide shows how to safely separate the main circuit board from the remainder of Zoomer Dino Boomer so that it can be replaced without damage to the electrical system.

TOOLS:

Phillips #1 Screwdriver (1)

Spudger (1)

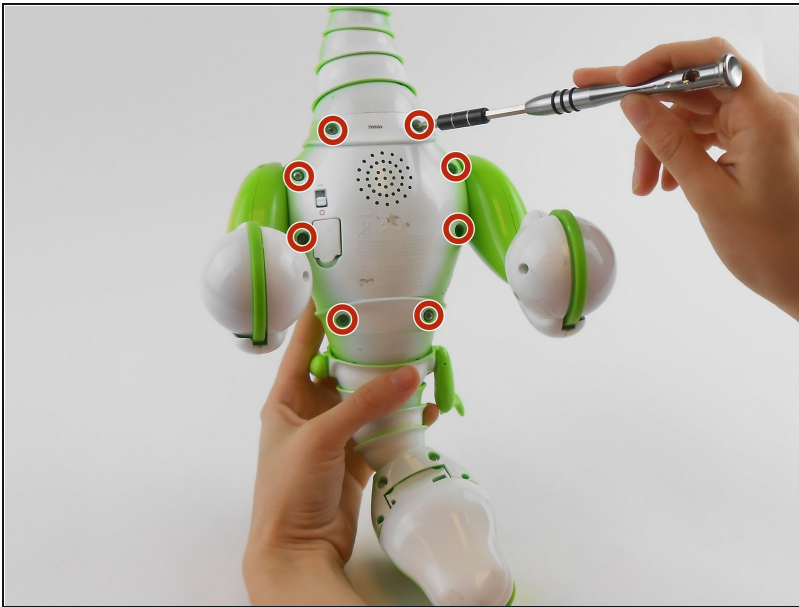
Tweezers (1)


Phillips #0 Screwdriver (1)

Lead-Free Solder (1)

Soldering Iron (1)

Step 1 — Back Cover



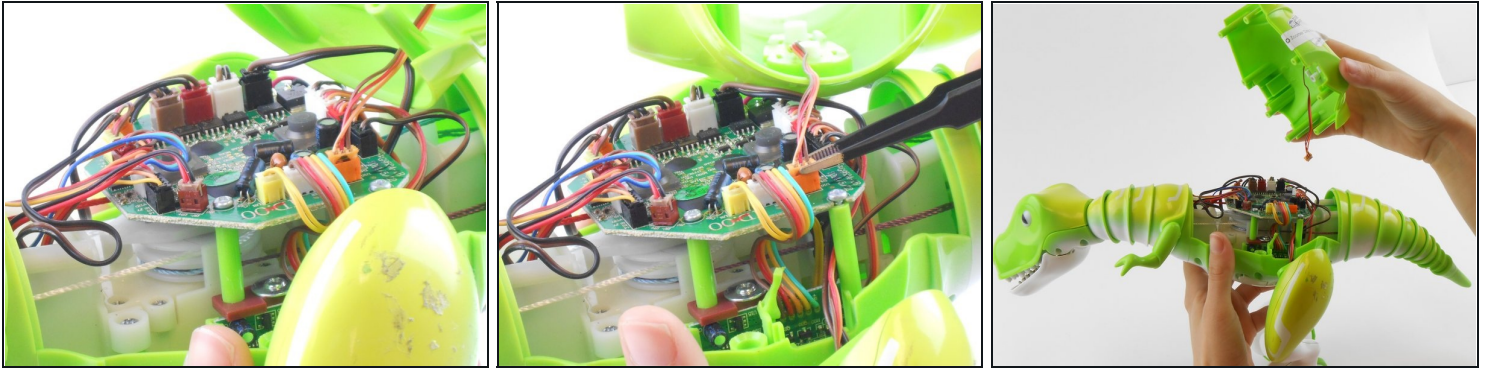
-  Power off Zoomer Dino Boomer before disassembly.
- Remove the eight 9.3mm Phillips #1 screws.

Step 2



- Turn dinosaur over and hold upright.
 - Use the spudger to pry apart the back cover from the remainder of the Zoomer Dino Boomer.
- ⚠ Be gentle while removing the back cover. The back cover of the Zoomer Dino Boomer is still connected to the electronic system by a wire.

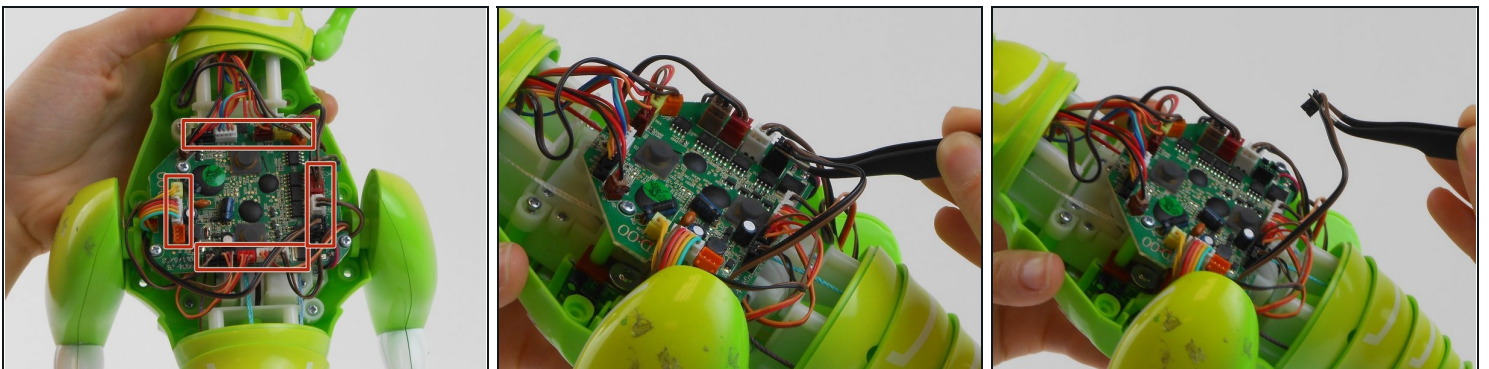
Step 3



- Disconnect the wire that connects the back cover of the dino to the main circuit board by carefully pulling on the orange wire connector with [tweezers](#).
- Remove back cover.
- ⓘ If you are having difficulty removing the connector from its socket, push in the small tabs on the side of the connector with the tweezers. This step may take some work.

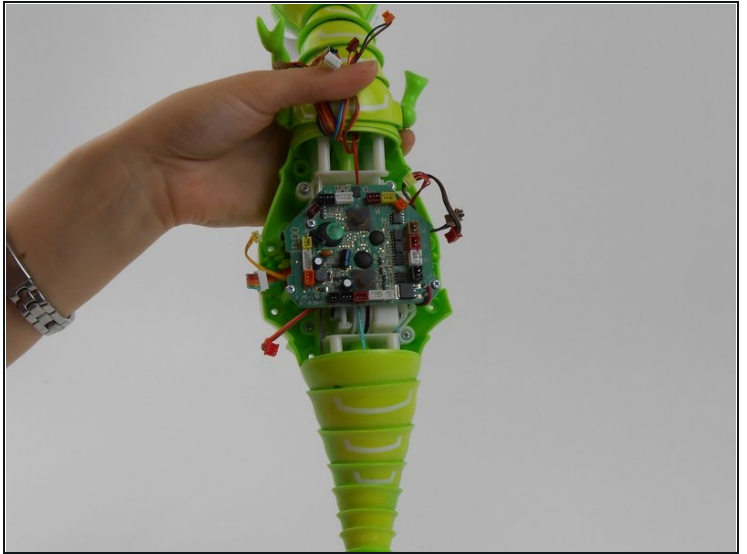
⚠ Do not damage the wires or circuit board.

Step 4 — Main Circuit Board



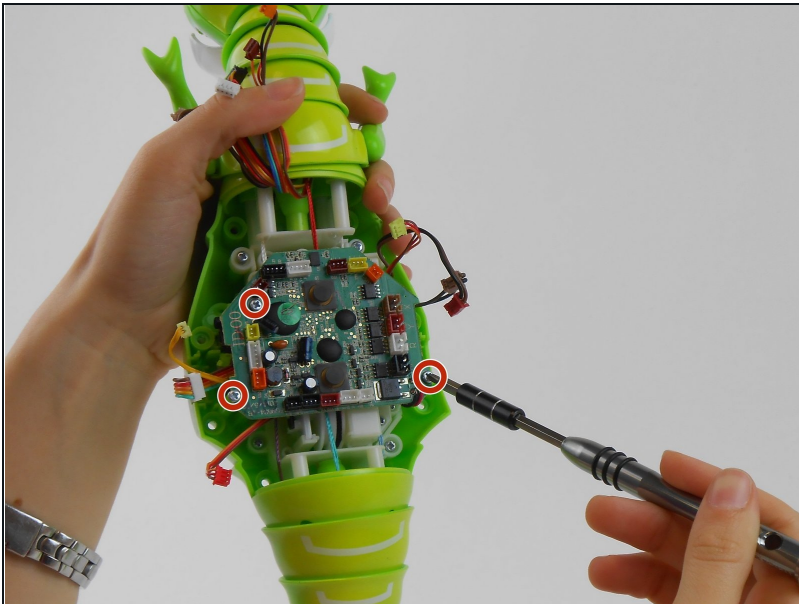
- Use [tweezers](#) to remove all of the colored wire connectors from their sockets on the circuit board.

Step 5



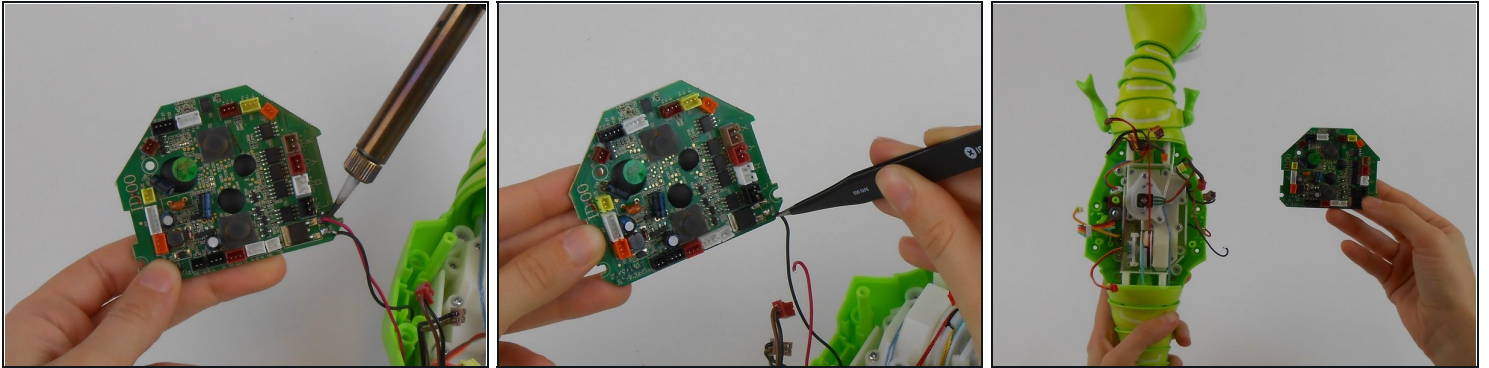
- Remove legs.

Step 6



- Remove the three 7.2 mm Phillips #0 screws connecting the main circuit board to the body of Zoomer Dino Boomer.

Step 7



- Use soldering iron and tweezers to disconnect main circuit board from the black and red wires.
- ① Check out iFixit's [soldering techniques guide](#) to learn more about soldering and desoldering connections.
- Remove main circuit board from Zoomer Dino Boomer

To reassemble your device, follow these instructions in reverse order.