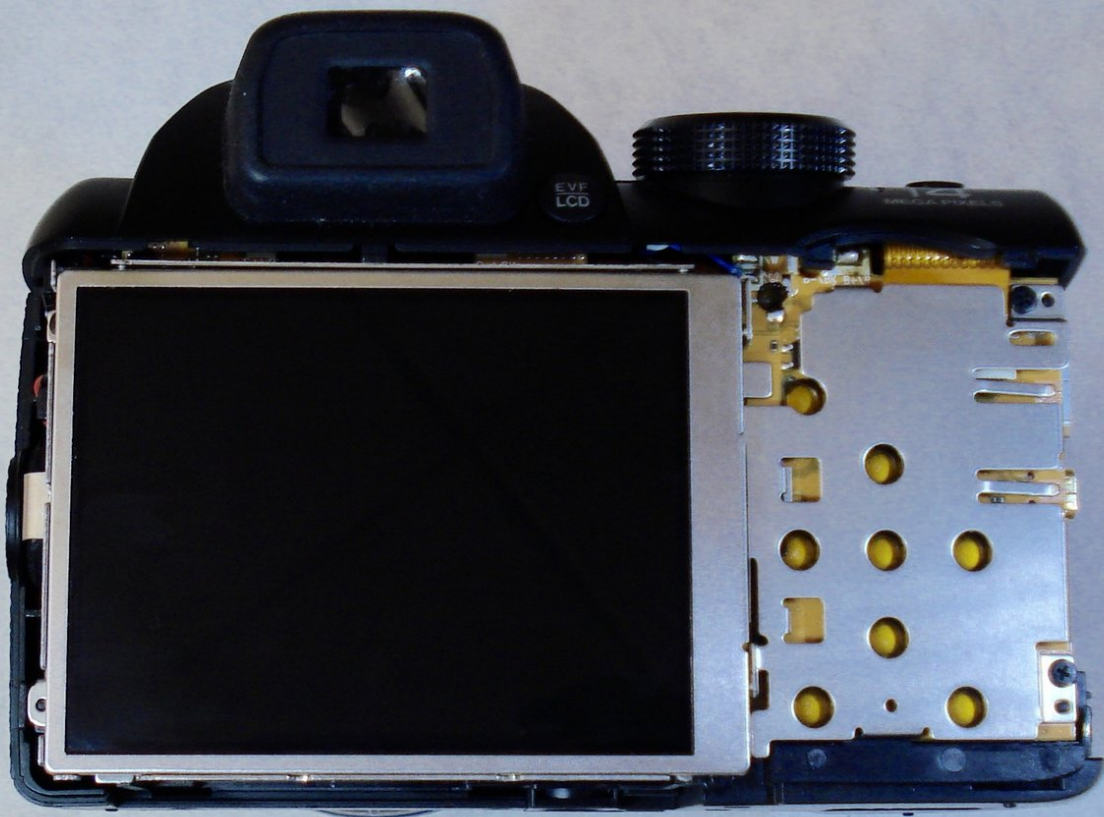




Fujifilm FinePix S4200 LCD Screen Replacement

The following guide will illustrate how to replace the LCD screen for a Fujifilm FinePix S4200.

Written By: Jackie Acevedo



INTRODUCTION

Replace the LCD screen if you are experiencing blurry pictures, or if you have a cracked screen.



TOOLS:

- [Phillips #000 Screwdriver](#) (1)
 - [iFixit Opening Tools](#) (1)
-

Step 1 — LCD Screen



- Turn the camera off.
- Turn the camera upside down so that the battery compartment is showing.

Step 2



- Remove the three 4 mm screws from the bottom of the camera with a Phillips #000 screwdriver.

Step 3



- Rotate camera to the side where the speaker ports are located.
- Remove the three 4 mm screws with a Phillips #000 screwdriver.


Step 4



- Turn the camera to the opposite side where the HDMI port is located.
- Remove all five 4 mm screws with a Phillips #000 screwdriver.

Step 5



 Casing is fragile.

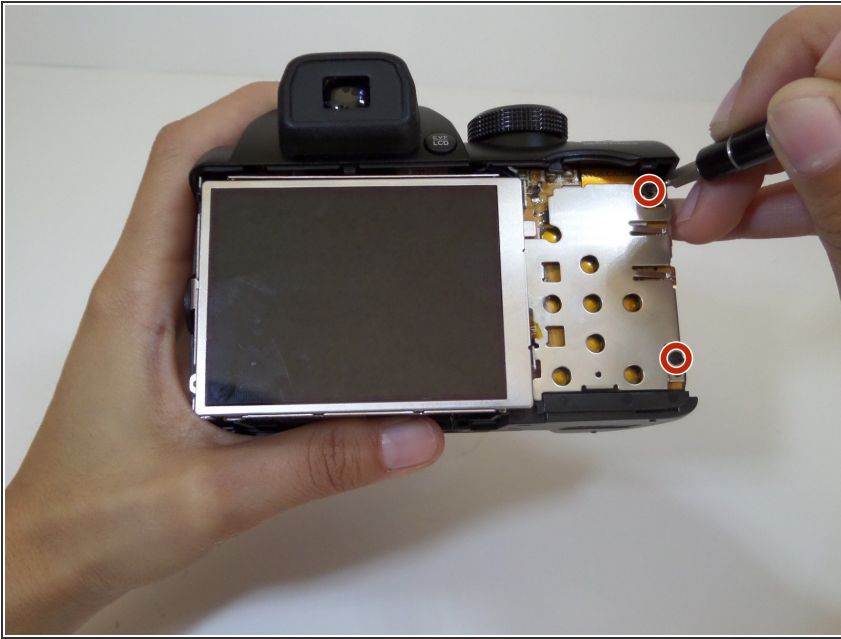
- Utilize the plastic opening tool to pry in between the back casing of the camera from the front casing.
- Continue this motion around the camera to create a wedge between the front and back casing of the camera.

Step 6



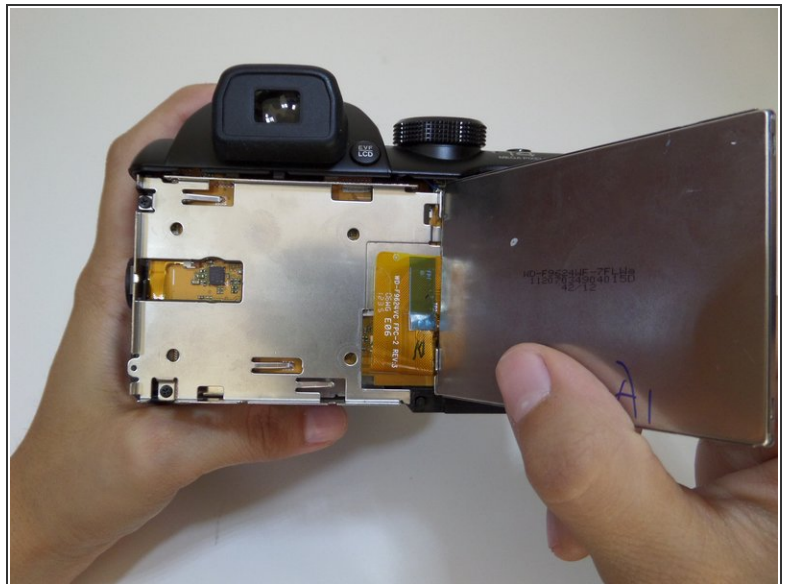
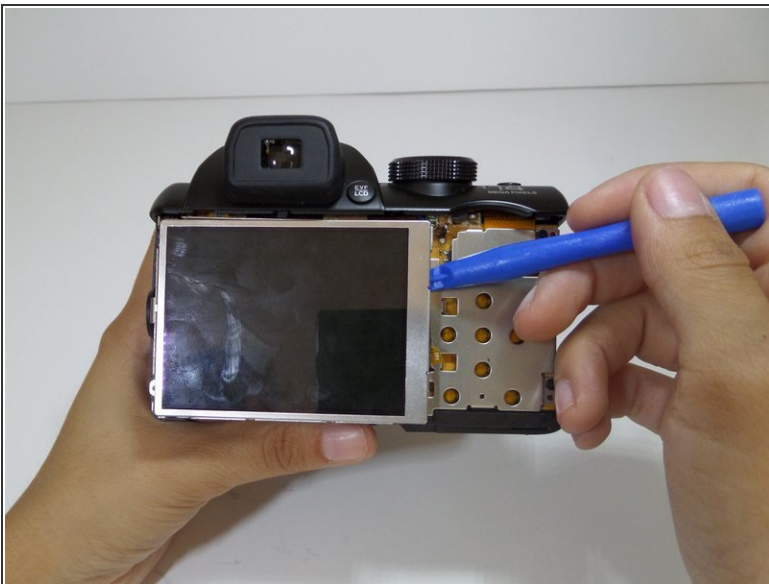
- Use force to pull apart the back casing from the camera.

Step 7



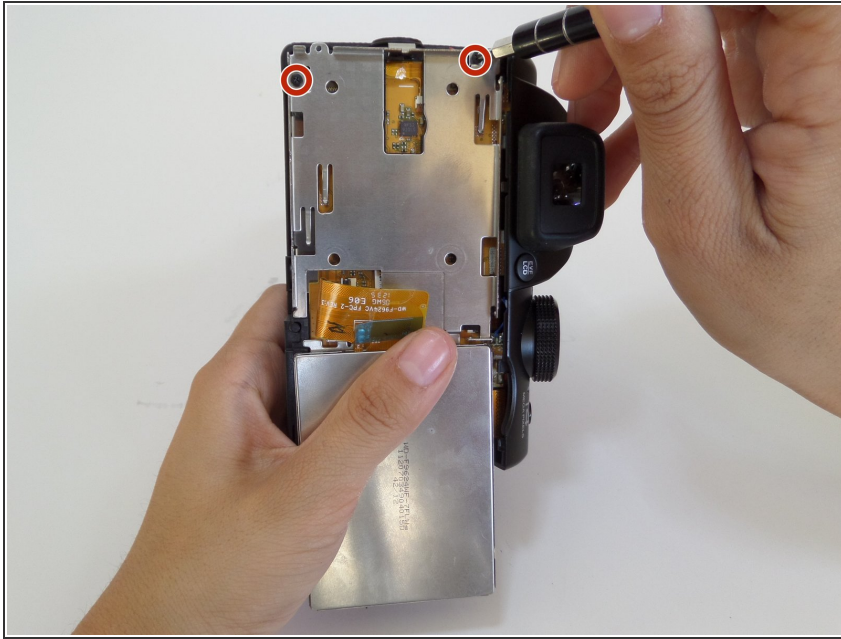
- Remove the two 4 mm screws that hold the motherboard and metal plate in place.

Step 8



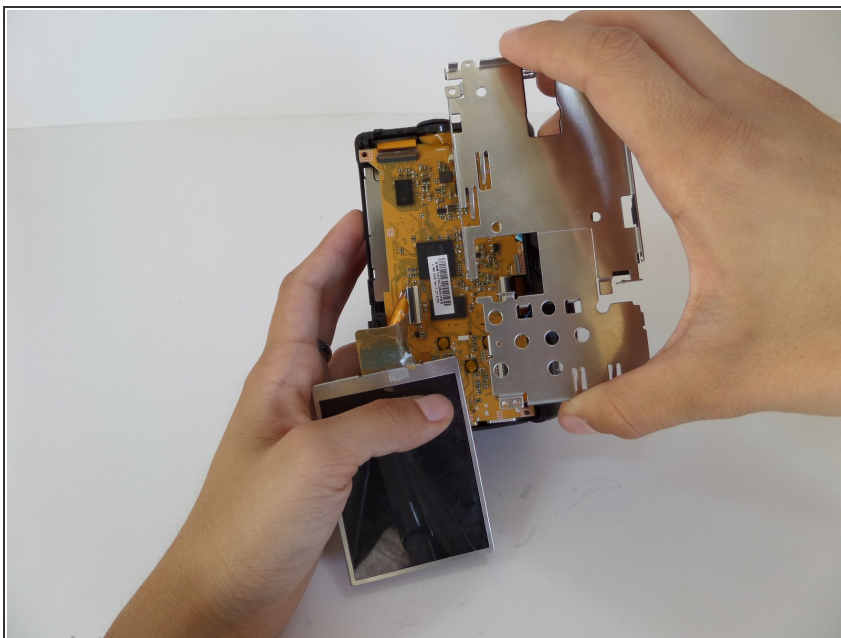
- Utilize the plastic opening tool to gently lift the LCD screen away from the metal plate.
- Flip over LCD screen so that the left side of the metal plate is visible.

Step 9



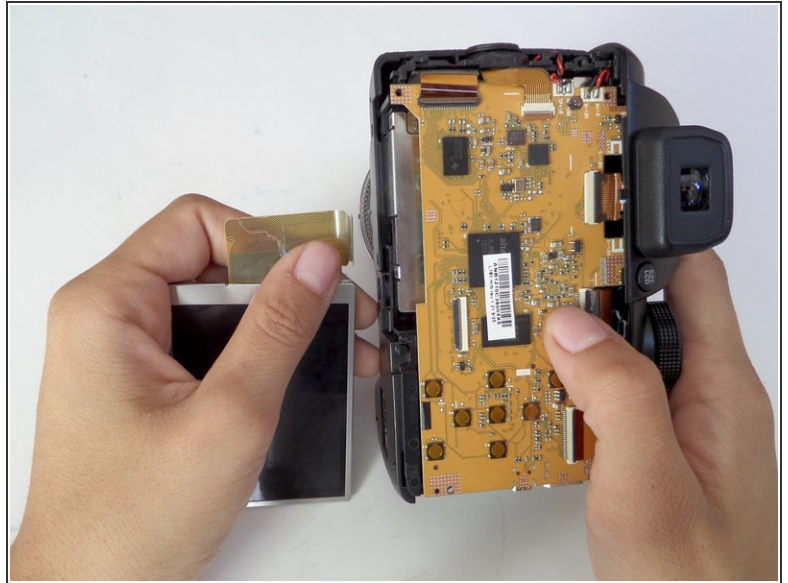
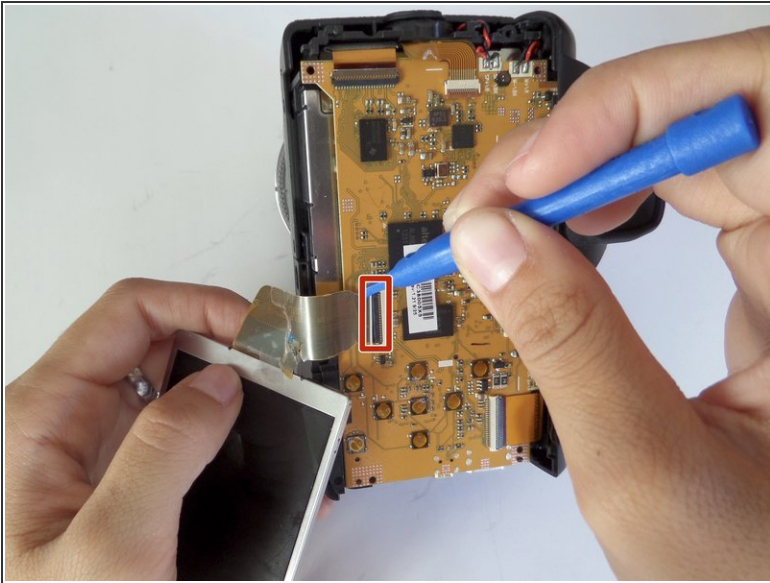
- ❗ Rotate the camera vertically so that it is easier to manage.
- Use a Phillips #000 screwdriver to remove the two 4mm screws that are located on the metal plate under the LCD screen.

Step 10



- Detach the metal plate from the motherboard.

Step 11



The orange ribbon cable is fragile.

- Pull back the small black latch connecting the orange ribbon cable to the motherboard.
- Gently remove the LCD screen from the motherboard.

To reassemble your device, follow these instructions in reverse order.