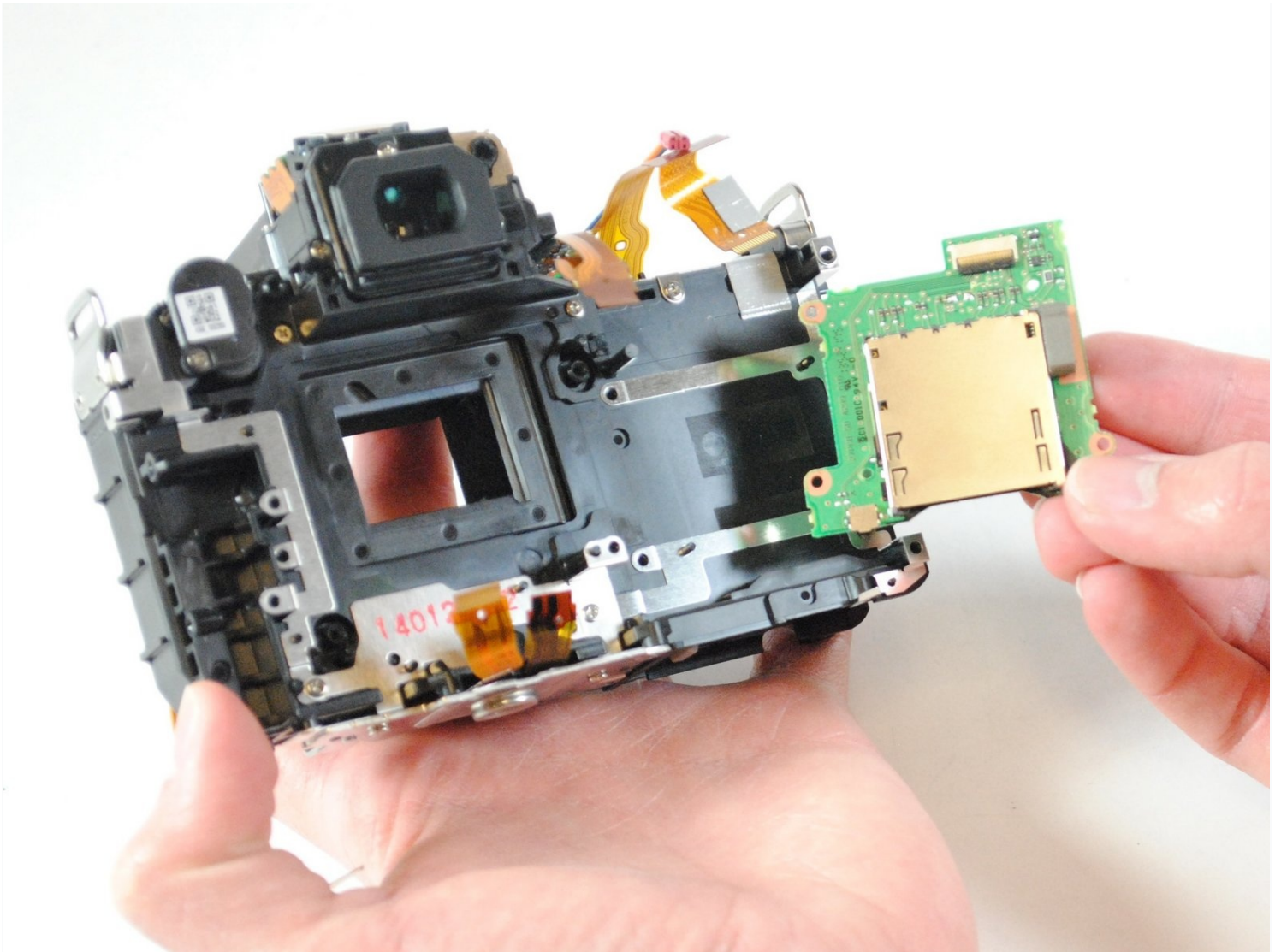




Canon EOS Rebel T5 SD Card Reader Replacement

If your camera is no longer reading SD cards,...

Written By: Tyler Brown



INTRODUCTION

If your camera is no longer reading SD cards, you may find that you need to replace your card reader. This guide will show you the steps necessary.

TOOLS:

Phillips #000 Screwdriver (1)

Fingers (1)

Spudger (1)

iFixit Opening Tool (1)

Step 1 — Battery



- Lay the camera on its back so that the card/battery door is facing you.
- Using your fingernail, slide the tab on the battery door up to release the battery door latch.

Step 2



- Lift the now free card/battery door to reveal the battery compartment.
- Push the gray lever to the right side so that the battery can be removed and replaced with a new one.

Step 3 — SD Card



- Lay the camera on its back so that the card/battery door is facing you.
- Using your fingernail, slide the tab on the battery door up to release the battery door latch.

Step 4



- Open the battery compartment by lifting the card/battery door. You will see a thin SD Card slot below the battery.
- Push in the old SD card until it clicks to remove it and then push in the new card until it clicks into place.

Step 5 — Back Panel



- Turn the camera so that the back is facing to your right.
- Remove the 5mm Phillips #000 screw above the rubber USB port cover.

Step 6



- Remove the rubber piece.
 - Unscrew the two screws under the rubber cover to completely remove the rubber cover piece.
- ⓘ It is held in place by a notched tether, but can be easily manipulated to slide out.

Step 7



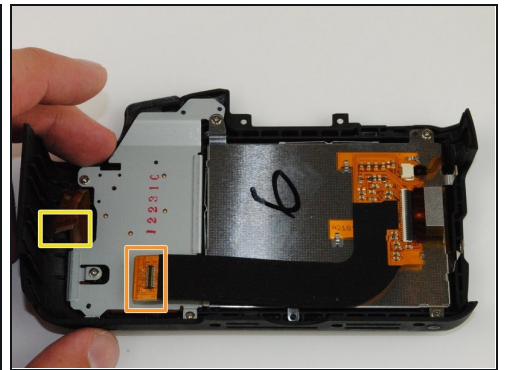
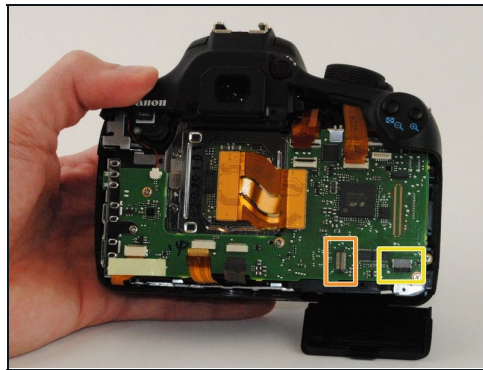
- Turn your camera so that the bottom is facing you.
- Remove the 5mm Phillips #000 screws.

Step 8



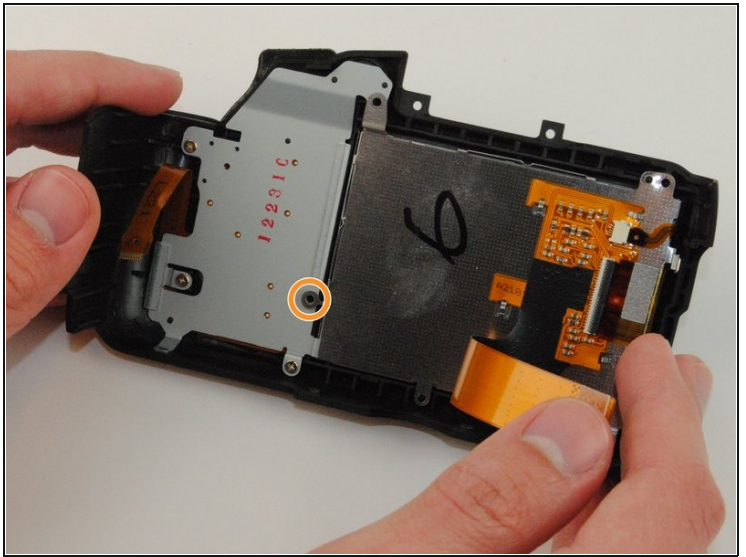
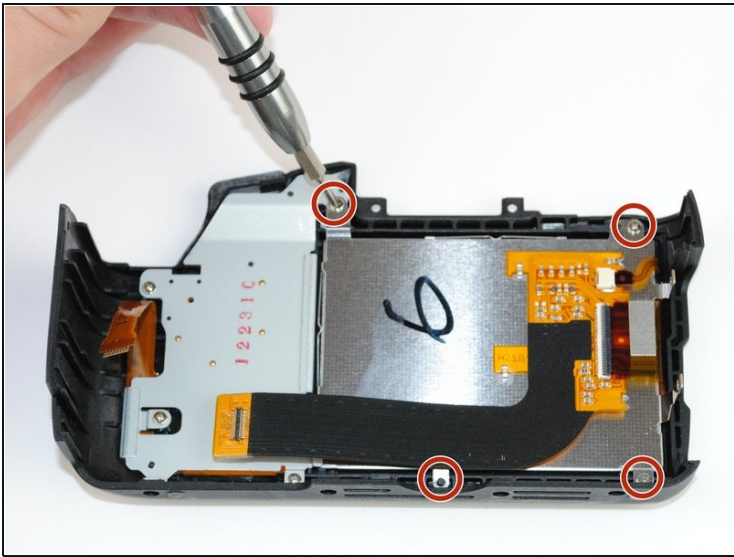
- Now turn the camera so that the front is facing towards your right.
- Remove the two remaining 5mm Phillips #000 screws.

Step 9



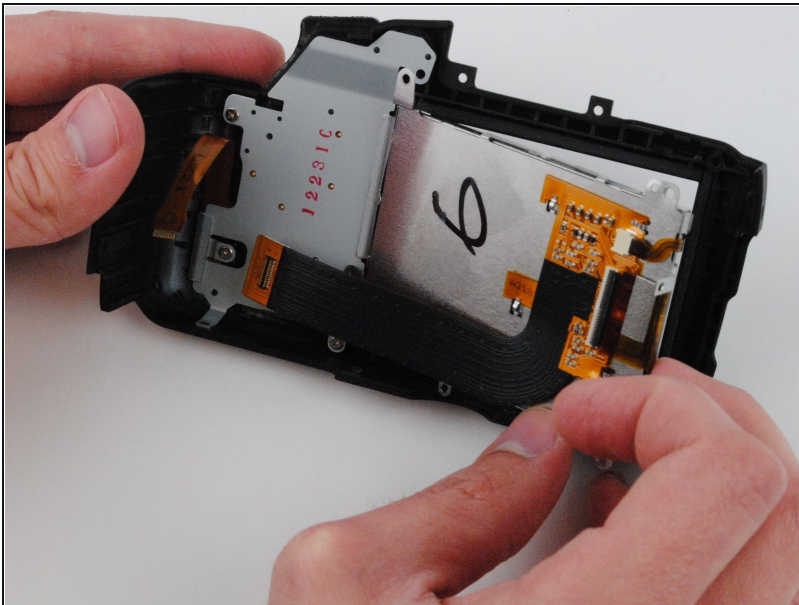
- Now that all of the exterior screws have been removed, grip the camera firmly on both sides.
- Gently pry the back panel from the main body of the camera.
 - ⚠ There are two ribbon cables that need to be removed in order for the back panel to come free from the camera body, as indicated.
- ⓘ This back panel contains various control components of the camera as well as the LCD screen.

Step 10 — LCD Screen



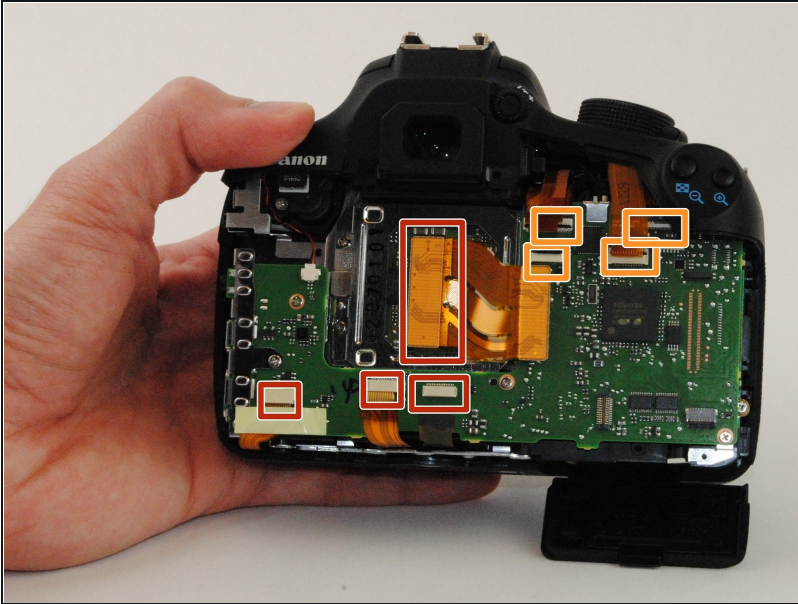
- Remove the four silver 4mm Phillips #000 screws connecting the LCD screen to the back of the camera.
- Be sure to lift the ribbon cable to remove the remaining hidden black 4mm Phillips #000 screw.

Step 11



- The LCD screen can now be lifted from the right side to be replaced.

Step 12 — Motherboard



- Remove all ribbon cables with the plastic spudger.
- Gently pry up the black plastic tabs to slide out the ribbon cables

Step 13



- Turn your camera so that the top is facing you.
- Remove the two black 5 mm Phillips #000 screws.

Step 14



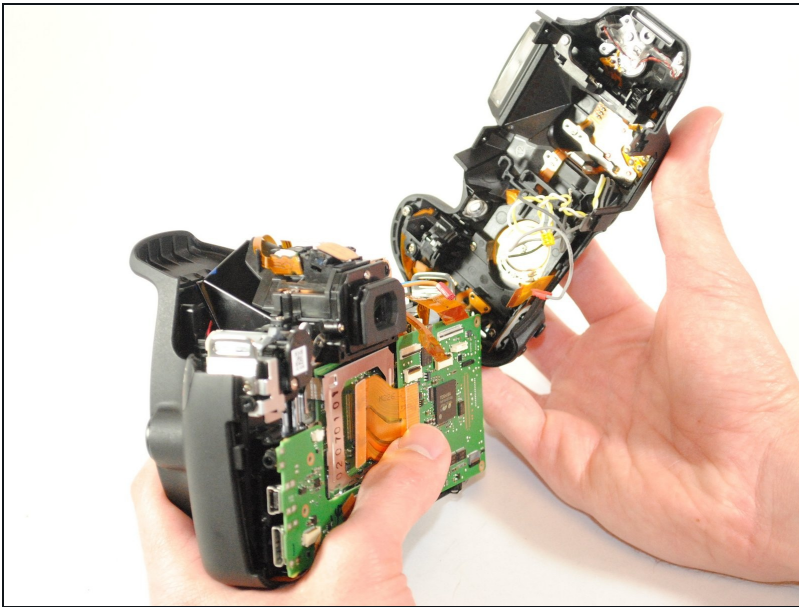
- Turn the grip side toward you.
- Remove the rubber grip, using the plastic spudger.

Step 15



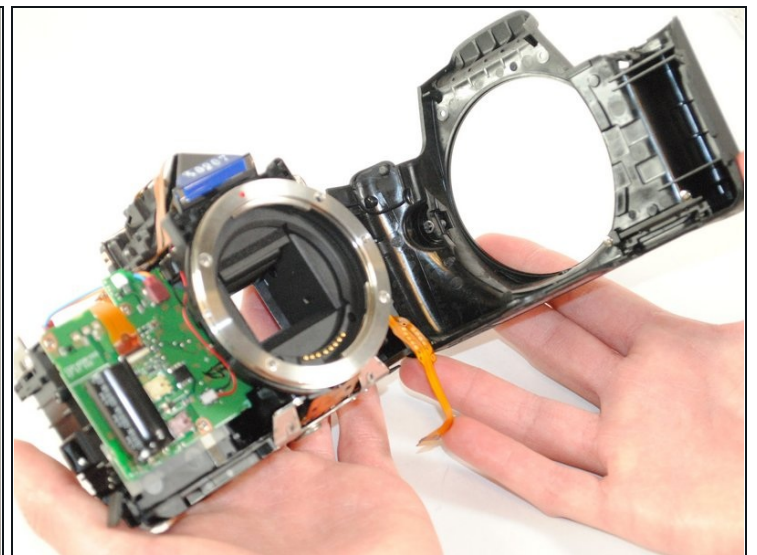
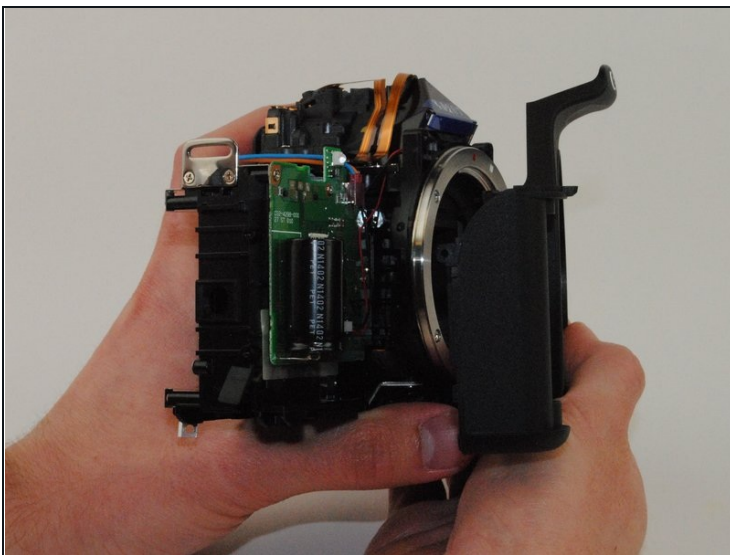
- Remove the black 5 mm Phillips #000 screw, located under the grip.

Step 16



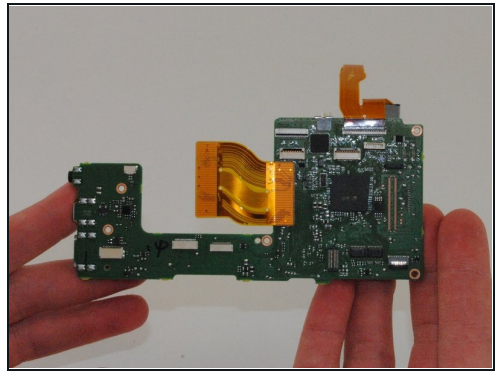
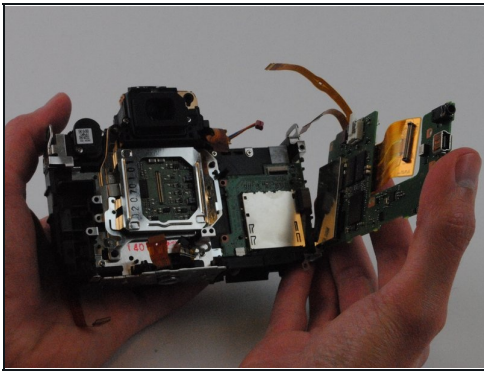
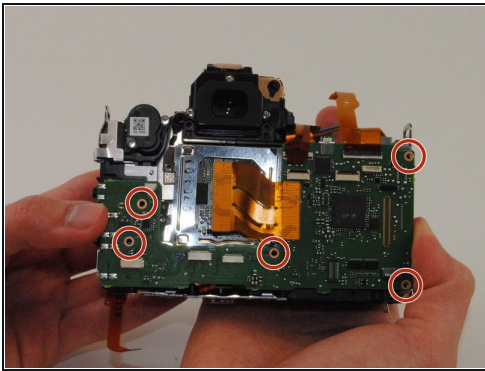
- Remove the top panel of the device.

Step 17



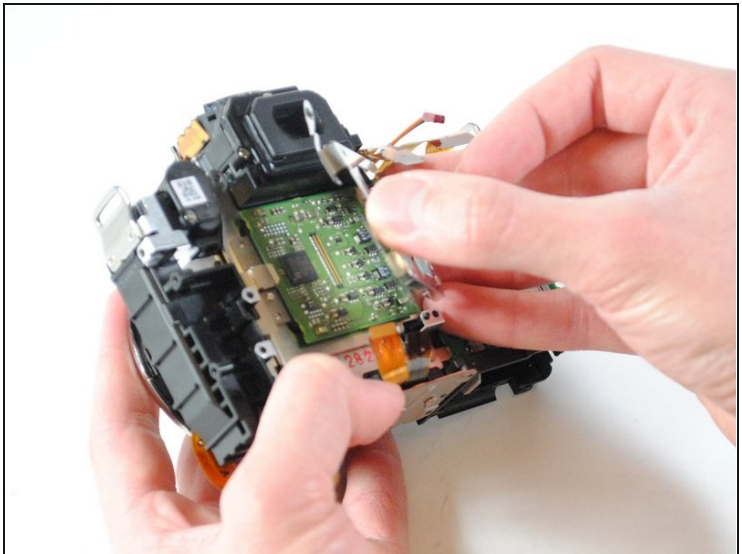
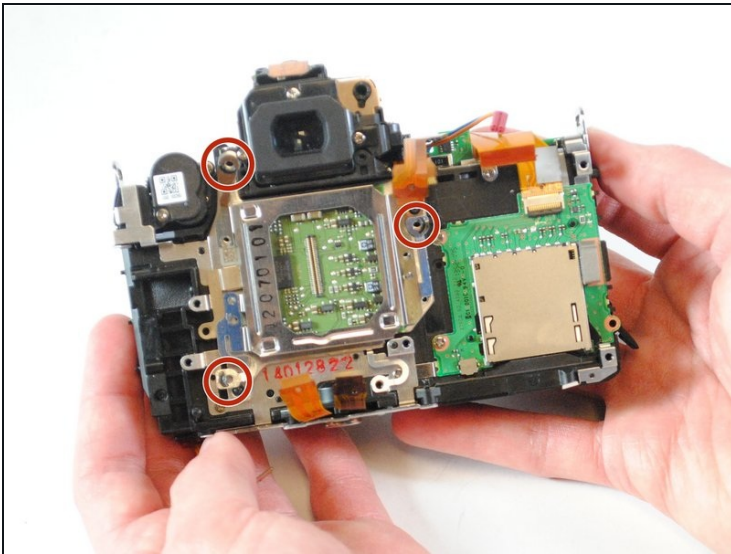
- Remove the front panel of the camera.

Step 18



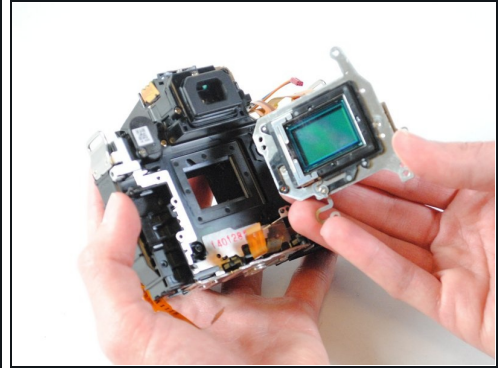
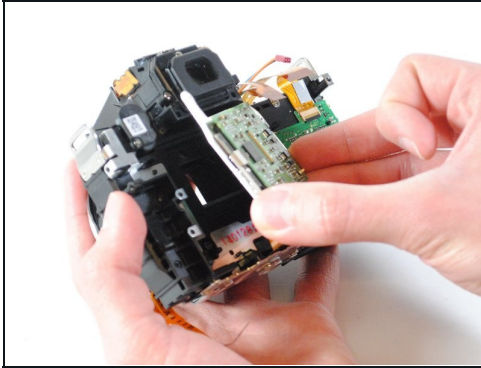
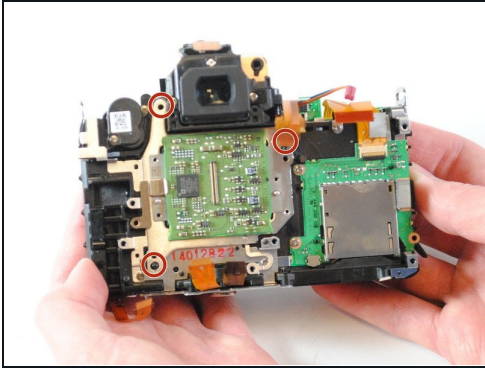
- Remove the five silver 5mm Phillips #000 screws.
- The motherboard can now be removed.

Step 19 — Image Sensor



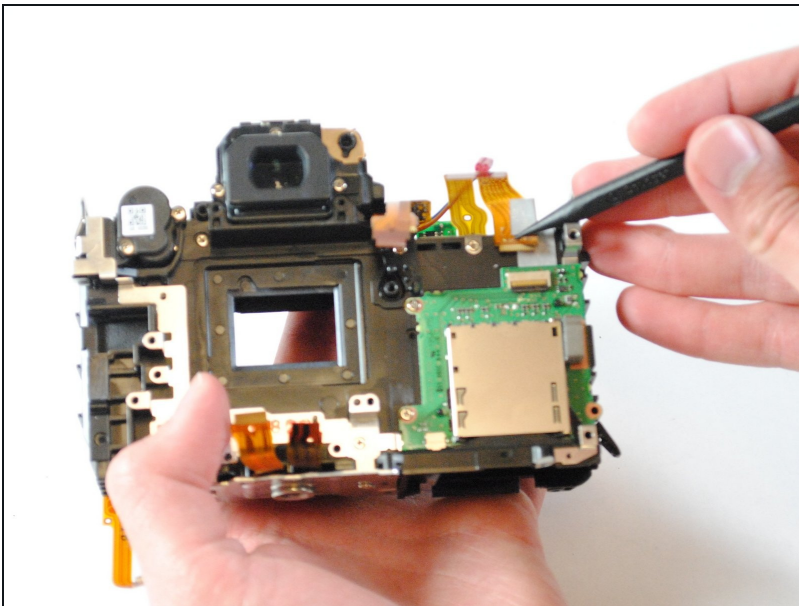
- Remove the three silver 3mm Philips #000 screws from the image sensor holder.
- Remove the image sensor holder.

Step 20



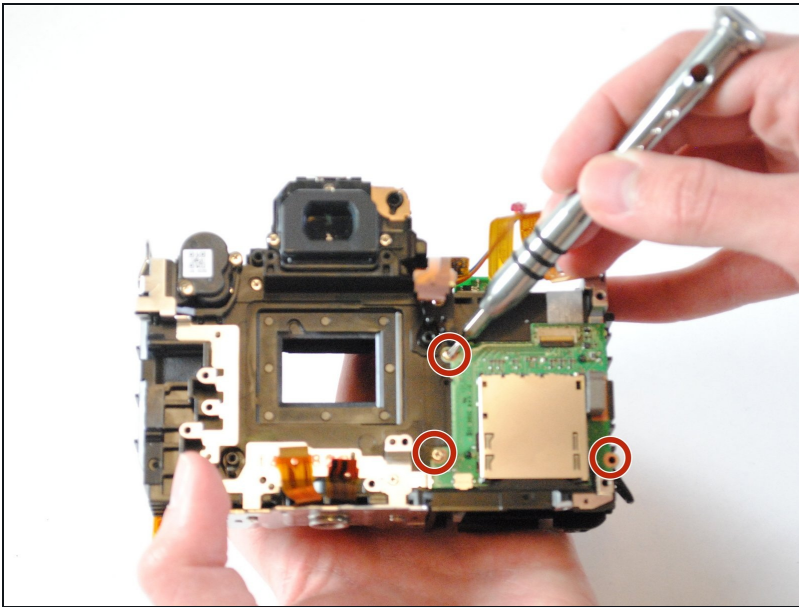
- Remove the three remaining silver 3mm Philips #000 screws from the image sensor.
⚠ Be careful not to lose the springs underneath the screws on the image sensor
- Using your fingers, lift the image sensor from the device.

Step 21 — SD Card Reader



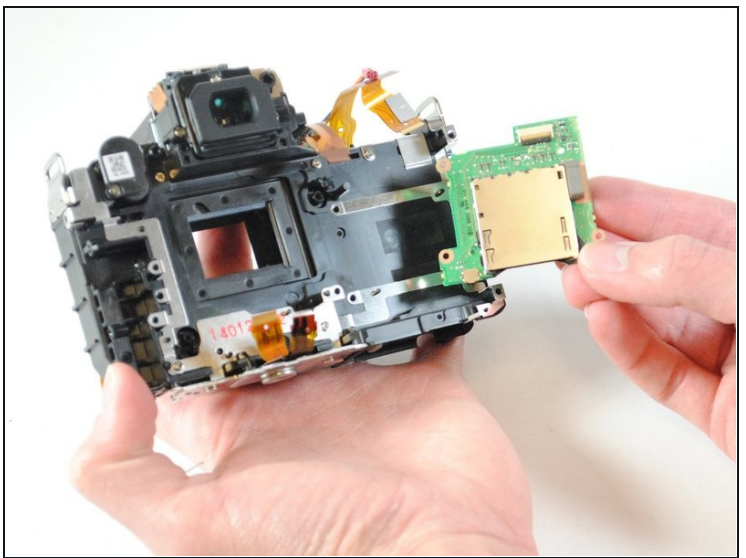
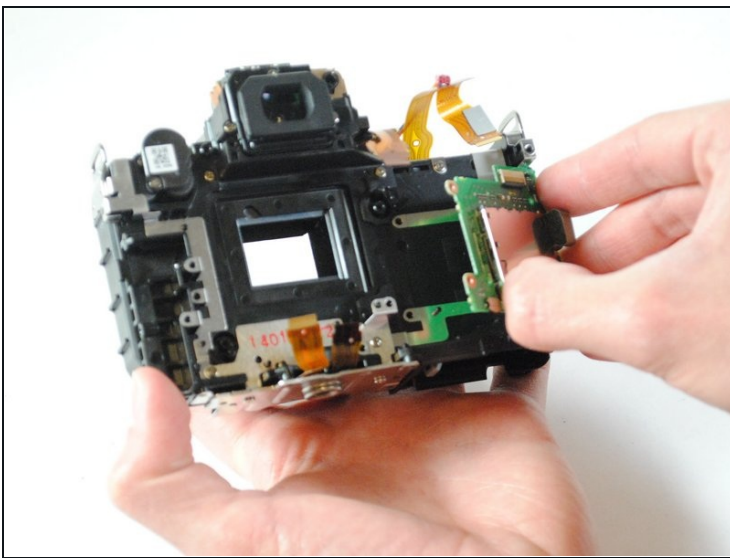
- Using the plastic spudger, disconnect the wire strips that are attached to the SD card reader.

Step 22



- Remove the three 3mm Phillips #000 screws connecting the SD card reader to the back of the device.

Step 23



- Using your fingers, remove the SD card reader from the back of the device.

To reassemble your device, follow these instructions in reverse order.