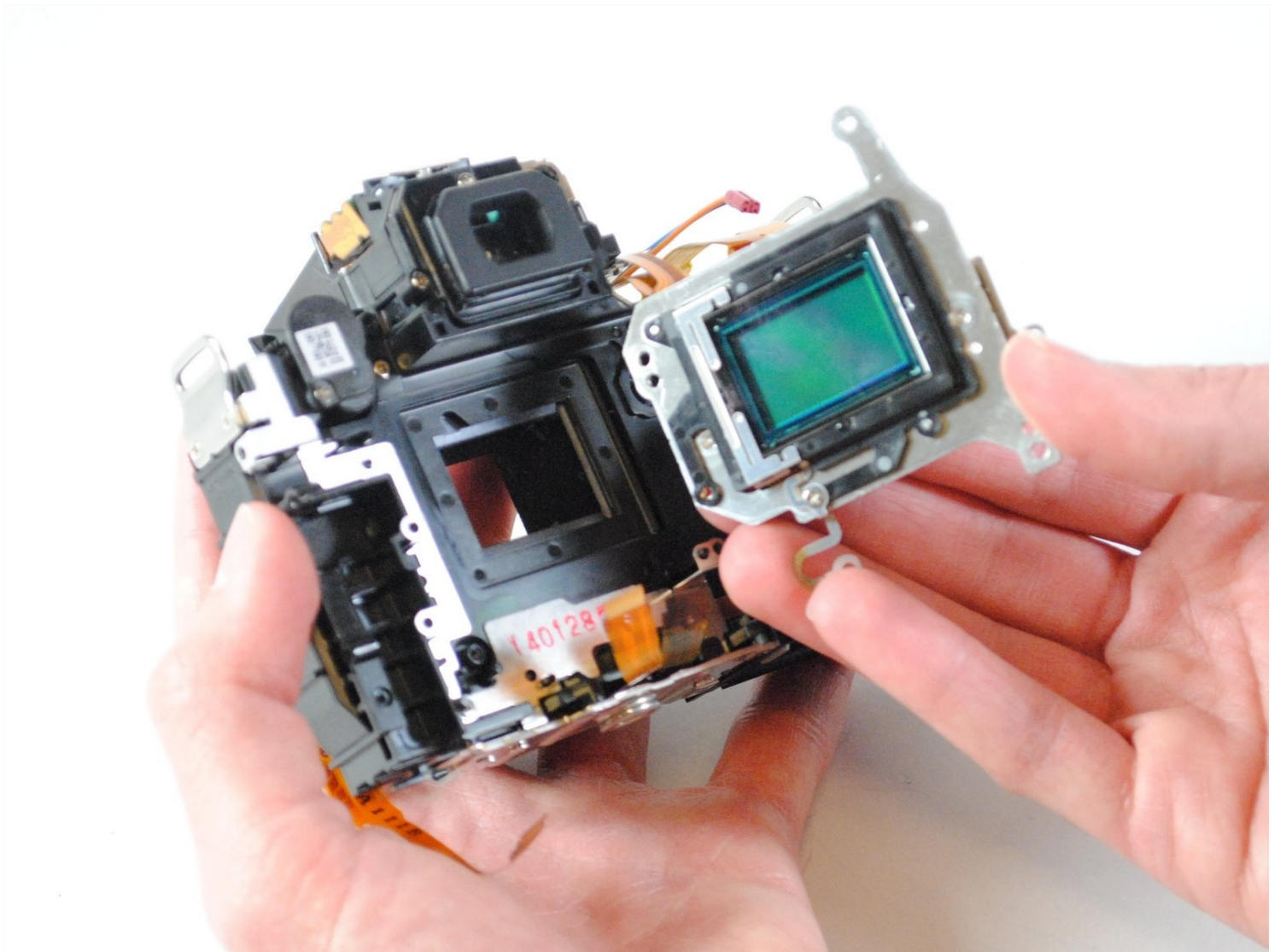




Canon EOS Rebel T5 Image Sensor Replacement

If you find that your camera needs a new image...

Written By: Tyler Brown



INTRODUCTION

If you find that your camera needs a new image sensor, this guide will show you how to replace it.

TOOLS:

Phillips #000 Screwdriver (1)

Fingers (1)

Spudger (1)

Step 1 — Battery



- Lay the camera on its back so that the card/battery door is facing you.
- Using your fingernail, slide the tab on the battery door up to release the battery door latch.

Step 2



- Lift the now free card/battery door to reveal the battery compartment.
- Push the gray lever to the right side so that the battery can be removed and replaced with a new one.

Step 3 — Back Panel



- Turn the camera so that the back is facing to your right.
- Remove the 5mm Phillips #000 screw above the rubber USB port cover.

Step 4



- Remove the rubber piece.
 - Unscrew the two screws under the rubber cover to completely remove the rubber cover piece.
- ⓘ It is held in place by a notched tether, but can be easily manipulated to slide out.

Step 5



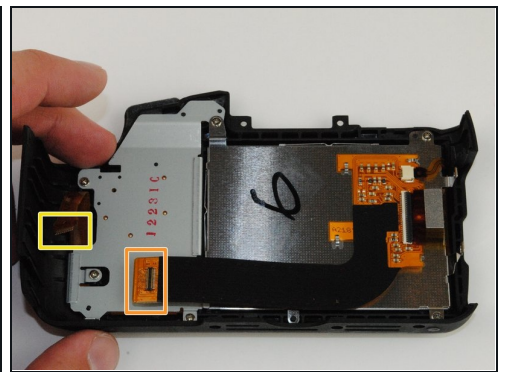
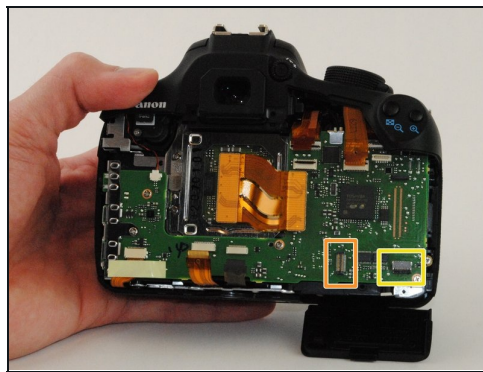
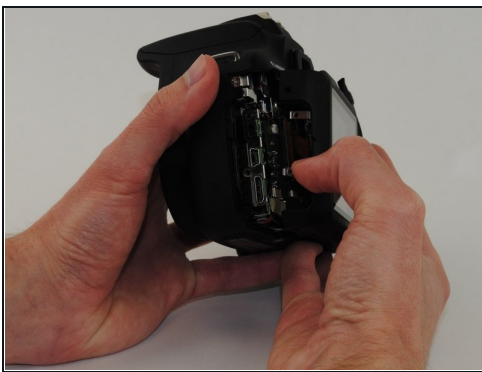
- Turn your camera so that the bottom is facing you.
- Remove the 5mm Phillips #000 screws.

Step 6



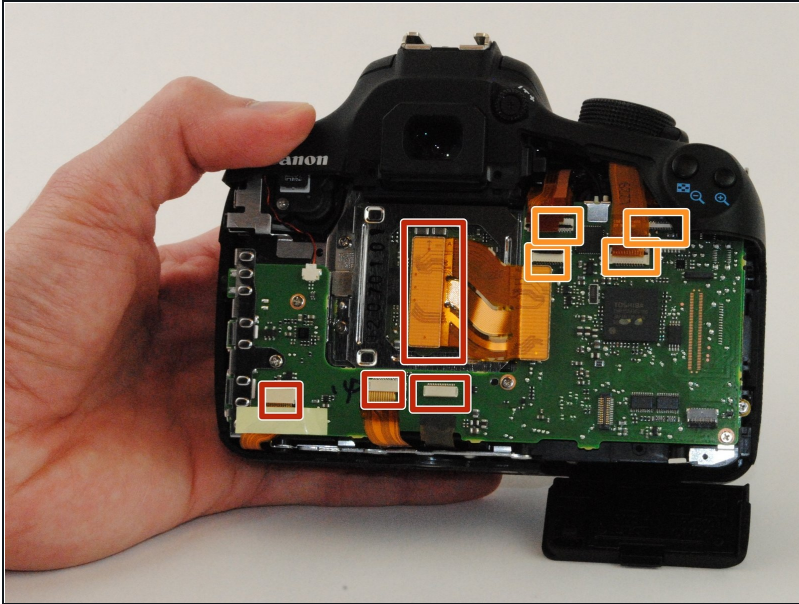
- Now turn the camera so that the front is facing towards your right.
- Remove the two remaining 5mm Phillips #000 screws.

Step 7



- Now that all of the exterior screws have been removed, grip the camera firmly on both sides.
- Gently pry the back panel from the main body of the camera.
 - ⚠ There are two ribbon cables that need to be removed in order for the back panel to come free from the camera body, as indicated.
- ⓘ This back panel contains various control components of the camera as well as the LCD screen.

Step 8 — Motherboard



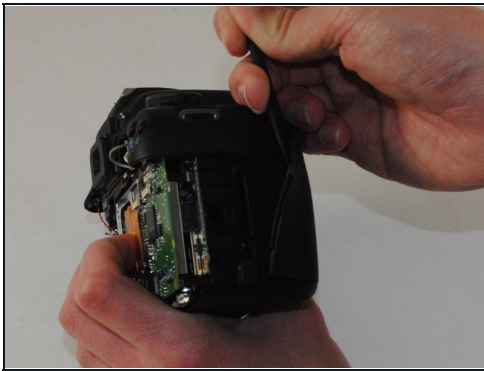
- Remove all ribbon cables with the plastic spudger.
- Gently pry up the black plastic tabs to slide out the ribbon cables

Step 9



- Turn your camera so that the top is facing you.
- Remove the two black 5 mm Phillips #000 screws.

Step 10



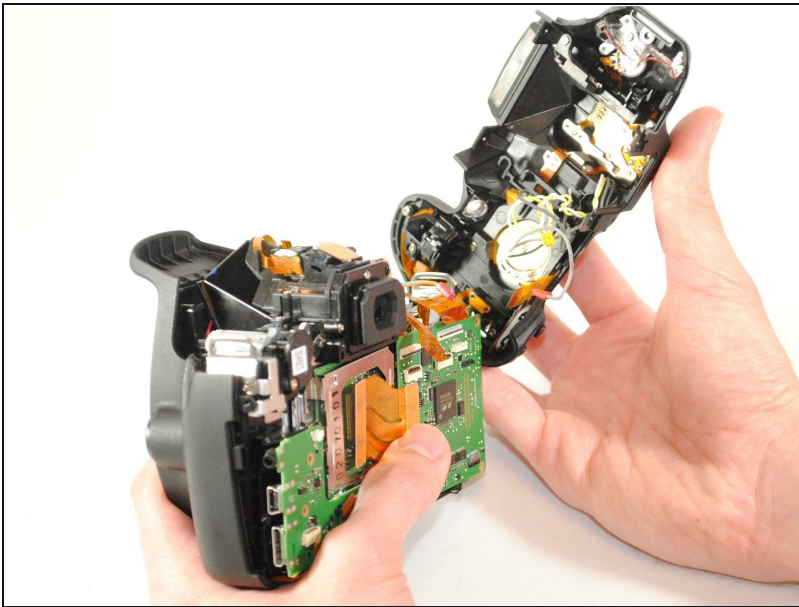
- Turn the grip side toward you.
- Remove the rubber grip, using the plastic spudger.

Step 11



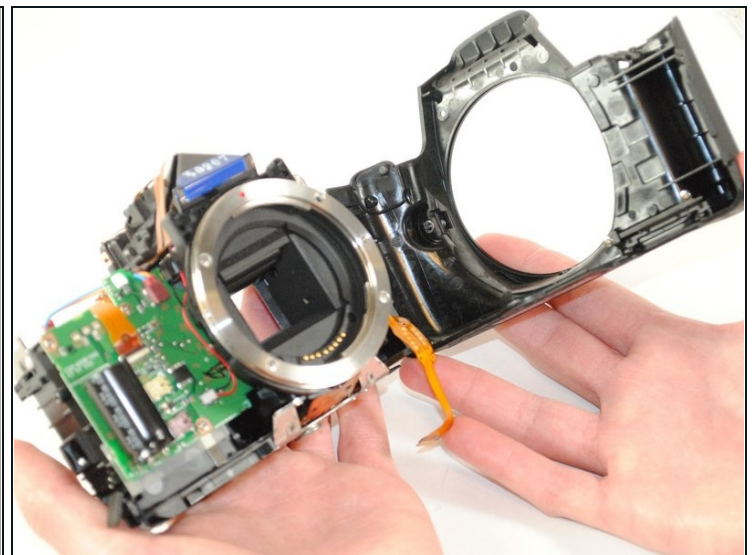
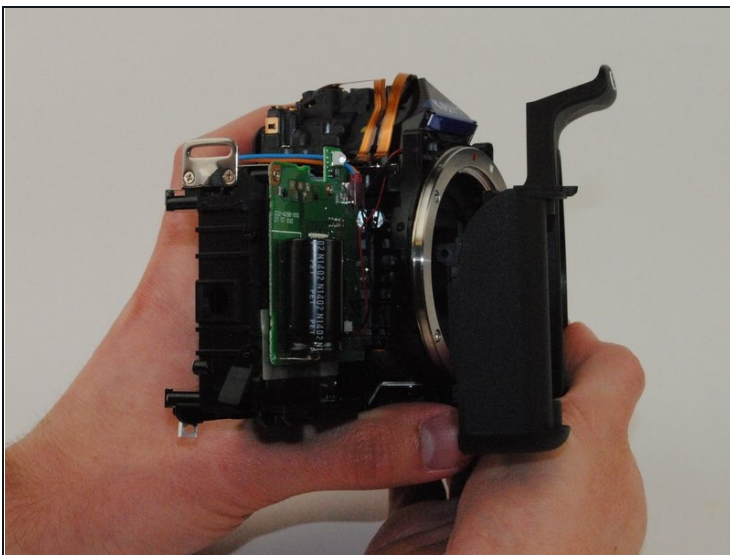
- Remove the black 5 mm Phillips #000 screw, located under the grip.

Step 12



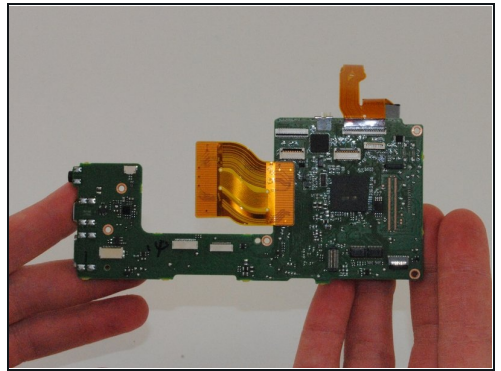
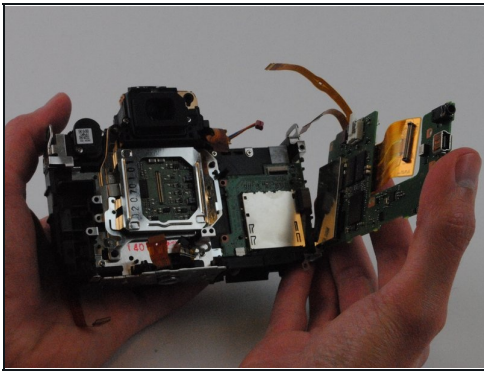
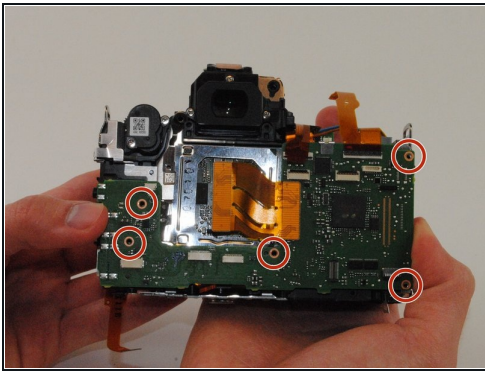
- Remove the top panel of the device.

Step 13



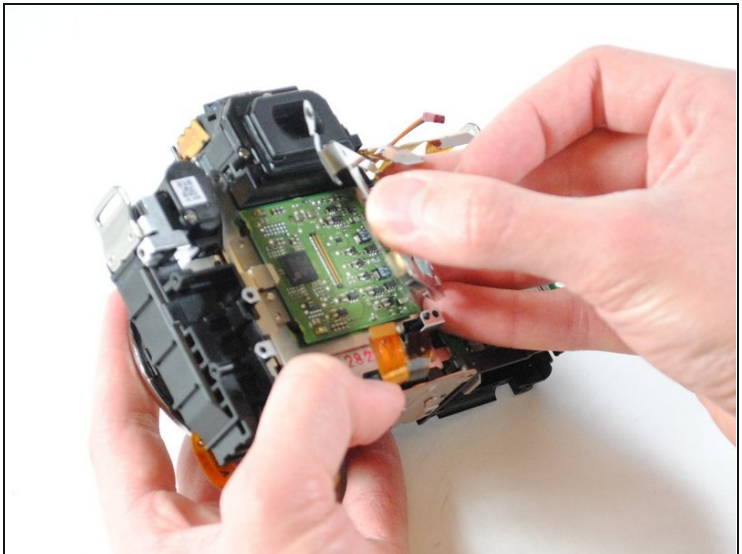
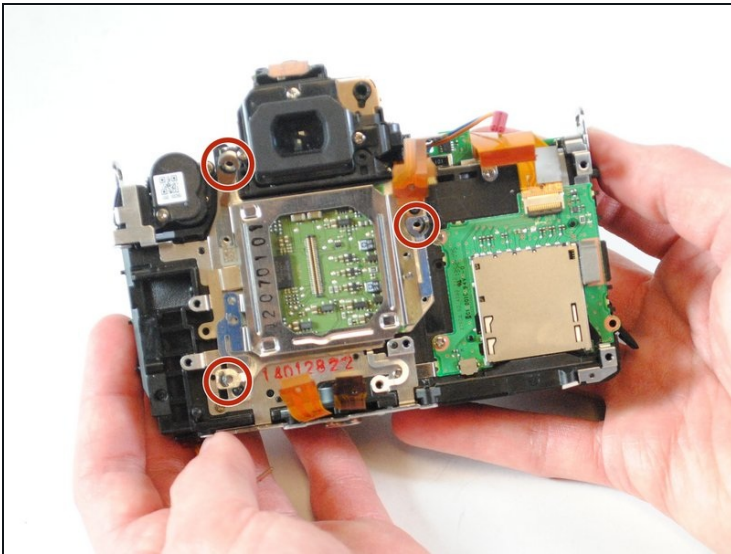
- Remove the front panel of the camera.

Step 14



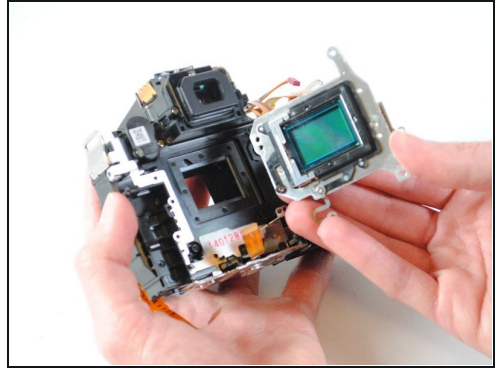
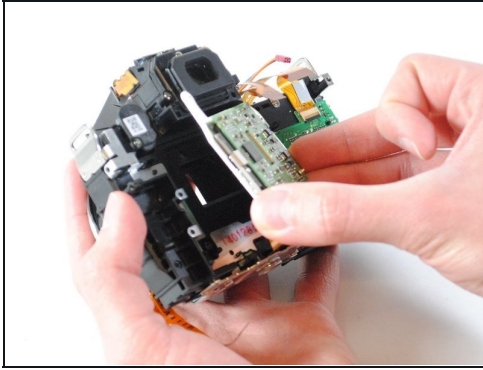
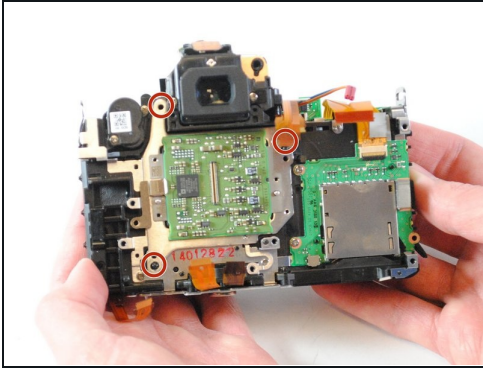
- Remove the five silver 5mm Phillips #000 screws.
- The motherboard can now be removed.

Step 15 — Image Sensor



- Remove the three silver 3mm Philips #000 screws from the image sensor holder.
- Remove the image sensor holder.

Step 16



- Remove the three remaining silver 3mm Philips #000 screws from the image sensor.
⚠ Be careful not lose the springs underneath the screws on the image sensor
- Using your fingers, lift the image sensor from the device.

To reassemble your device, follow these instructions in reverse order.