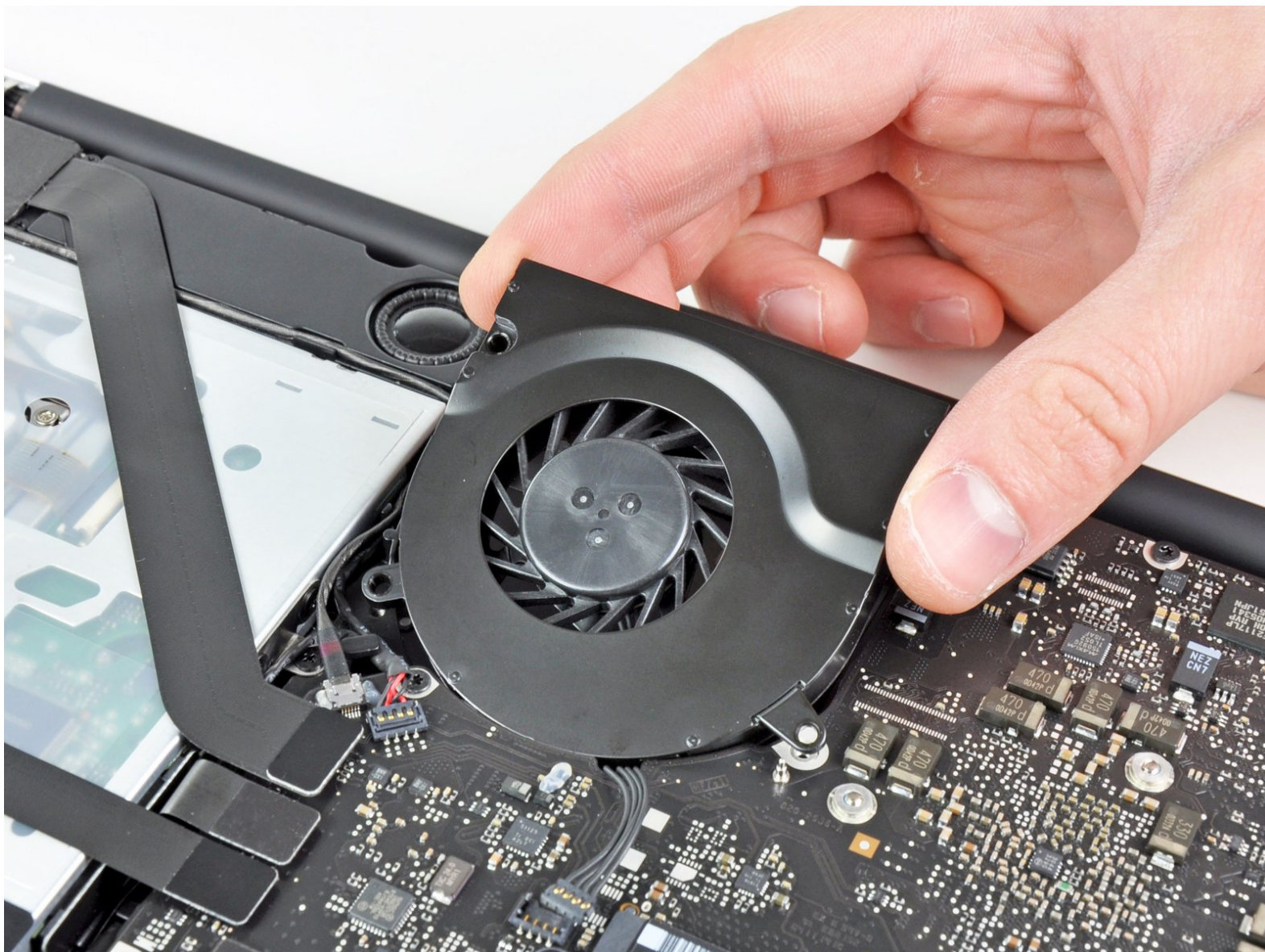




# MacBook Pro 13" Unibody Early 2011 Fan Replacement

Replace the fan in your Early 2011 MacBook Pro 13" Unibody.

Written By: Andrew Bookholt



# INTRODUCTION

Use this guide to replace a noisy or burned-out fan.



## TOOLS:

- [Phillips #00 Screwdriver](#) (1)
- [Spudger](#) (1)
- [T6 Torx Screwdriver](#) (1)



## PARTS:

- [MacBook Pro Unibody 13" \(Mid 2009 to Mid 2012\) and MacBook Unibody 13" \(A1278 and A1342\) Fan](#) (1)

## Step 1 — Lower Case



- Remove the following ten screws:
  - Three 14.4 mm Phillips #00 screws
  - Three 3.5 mm Phillips #00 screws
  - Four 3.5 mm shouldered Phillips #00 screws
- ⓘ When replacing the small screws, align them perpendicular to the slight curvature of the case (they don't go straight down).

## Step 2



- Use your fingers to pry the lower case away from the body of the MacBook near the vent.
- Remove the lower case.



## Step 3 — Battery Connection



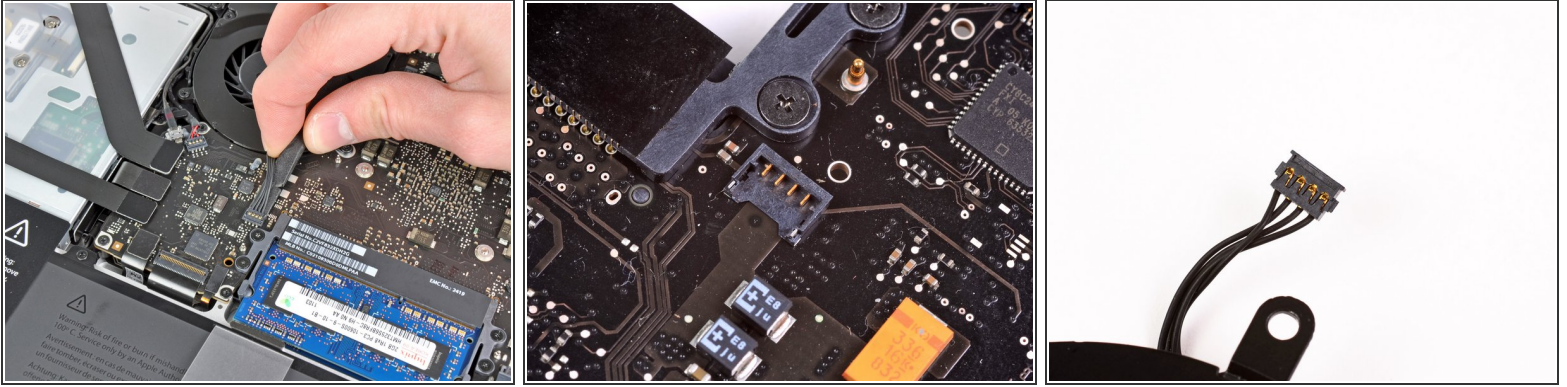
- Use the edge of a spudger to pry the battery connector upwards from its socket on the logic board.
- ❗ It is useful to pry upward on both short sides of the connector to "walk" it out of its socket. Be careful with the corners of the connectors, they can be easily broken off.

## Step 4





- Bend the battery cable slightly away from its socket on the logic board so it does not accidentally connect itself while you work.

## Step 5 — Fan



- Use the edge of a spudger to gently pry the fan connector up and out of its socket on the logic board.

 It is useful to twist the spudger axially from beneath the fan cable wires to release the connector.

 The fan socket and the fan connector can be seen in the second and third pictures. Be careful not to break the plastic fan socket off the logic board as you use your spudger to lift the fan connector straight up and out of its socket. The layout of the logic board shown in the second picture may look slightly different than your machine but the fan socket is the same.

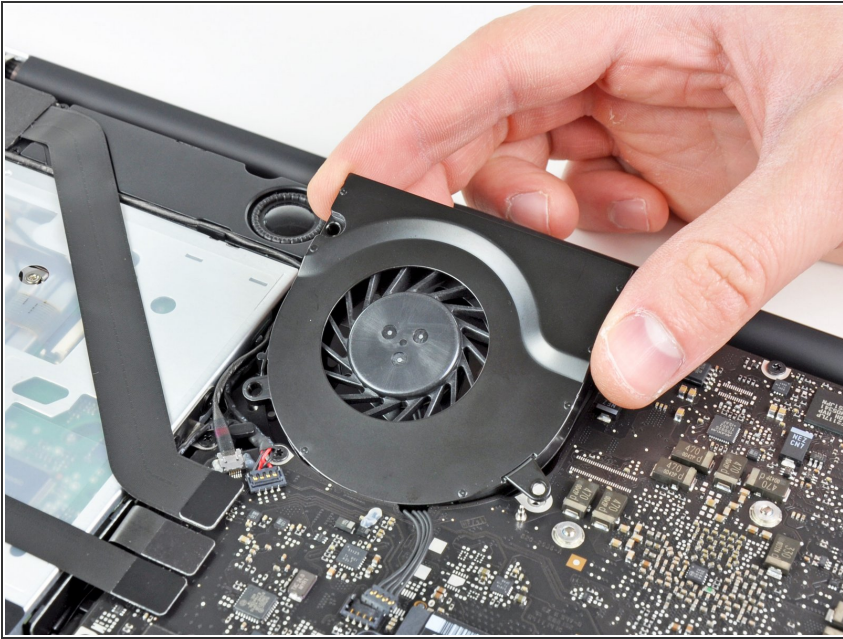
## Step 6



- Remove the following three screws securing the fan to the logic board:
  - One 7.2 mm T6 Torx screw
  - Two 5.3 mm T6 Torx screws



## Step 7



- Lift the fan out of its recess in the logic board, minding its cable that may get caught.

To reassemble your device, follow these instructions in reverse order. (Always a good idea to first blow the dust out, wipe the inside cover, etc.)